

Native Hawaiians face some of the greatest needs among Hawai'i's citizens.

Pooling resources to address these needs is an effective way for the State, private organizations, and OHA to meet shared goals.

THE OFFICE OF HAWAIIAN AFFAIRS

LEVERAGES RESOURCES

TO IMPROVE HAWAI'I COMMUNITIES

OVERVIEW

\$4.1m
STATE*

\$4.1m
OHA MATCH

\$1.6m
COMMUNITY MATCH

\$
COMMUNITY IN-KIND**

\$7.5m
ADDITIONAL OHA FUNDS

\$17.4M INVESTMENT

EDUCATION

HEALTH

LEGAL

SERVICES

SOCIAL

SERVICES

\$1.00 = \$4.23

of STATE FUNDS

TOTAL IMPACT

* Note: OHA's total biennium request is \$7.9M: \$4.1M in programmatic funds and \$3.8M for operations and personnel.

Strengthening Hawai'i families and communities

- Facilitate self-sufficiency and productivity
- Increase contributions of citizens to society
- Empower community capacity building
- Improve Native Hawaiian well-being

** Value added non-cash contributions

OHA

74% of Native Hawaiian students are not proficient in math and 62% are not proficient in reading (vs 58% and 49% of students respectively statewide). Improving these core abilities for students would increase their life-long opportunities in education and employment.

THE OFFICE OF HAWAIIAN AFFAIRS
LEVERAGES RESOURCES
TO IMPROVE EDUCATION IN HAWAI'I

EDUCATION

\$1.2m
STATE

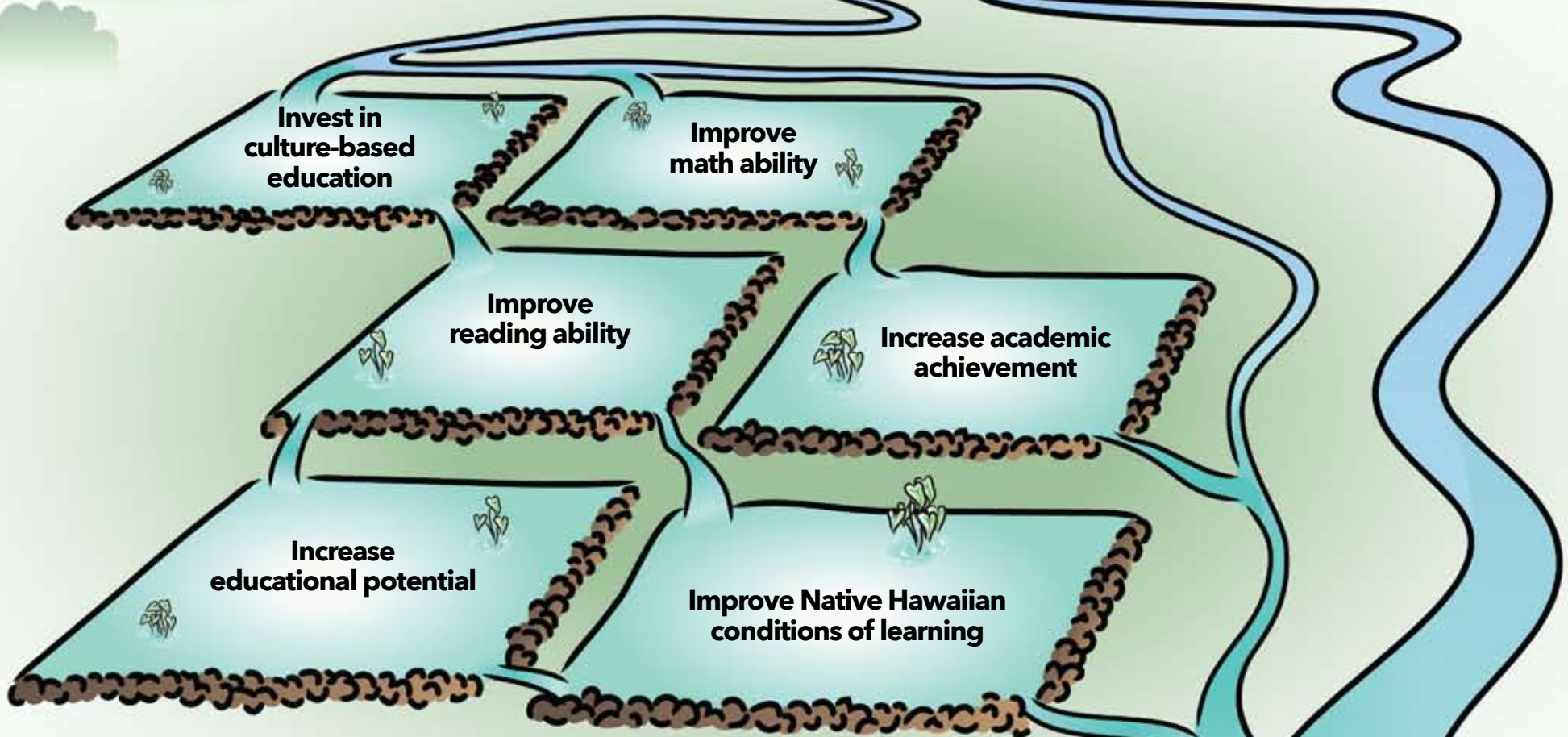
\$1.2m
OHA MATCH

\$200k
COMMUNITY MATCH

\$
COMMUNITY IN-KIND*

\$1.5m
ADDITIONAL OHA FUNDS

\$4.2M INVESTMENT



\$1.00 = \$3.41
of STATE FUNDS TOTAL IMPACT

Long-term improvement in community members' economic and educational capacity.

* Value added non-cash contributions



50.2% of Native Hawaiians pay more than the HUD affordable housing rate (30% of household income), creating an unstable situation of financial vulnerability. Increasing the financial viability of such families will improve their ability to achieve stable housing necessary for the overall well-being of families and communities.

THE OFFICE OF HAWAIIAN AFFAIRS
LEVERAGES RESOURCES
TO IMPROVE HOUSING IN HAWAI'I

HOUSING

\$1m
STATE

\$1m
OHA MATCH

\$400k
COMMUNITY MATCH

\$
COMMUNITY IN-KIND*

\$6m
ADDITIONAL OHA FUNDS

\$8.4M INVESTMENT

Increase skills training

Improve financial literacy

Reduce debt and improve credit scores

Assist progression from transitional shelters to permanent housing

Increase families obtaining stable rental housing

Increase home ownership

\$1.00 = \$8.40

of STATE FUNDS

TOTAL IMPACT

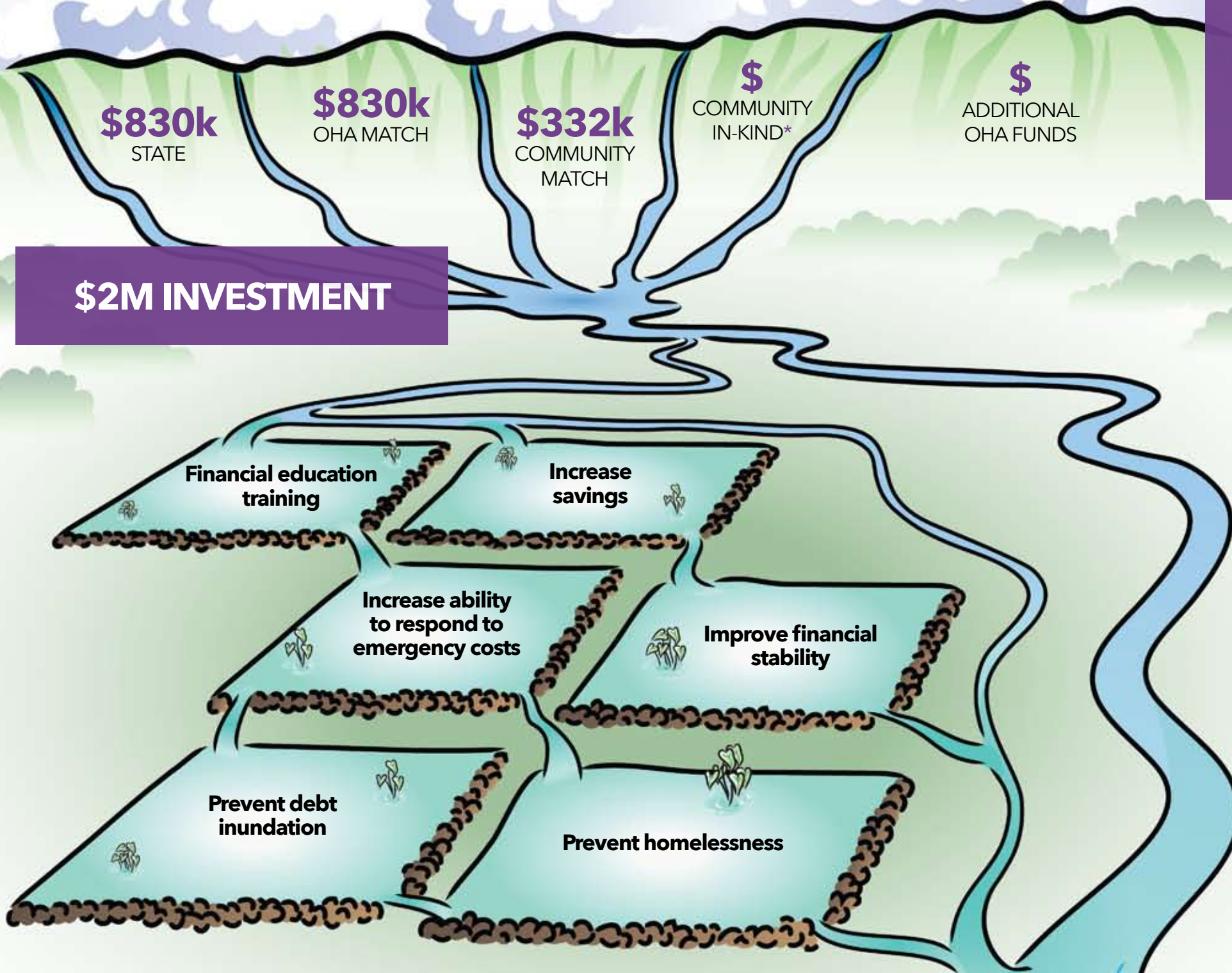
Long-term improvement in housing stability and overall economic sufficiency for families.

* Value added non-cash contributions

OHA

12% of Native Hawaiians live in poverty. Providing support for unforeseen needs of such financially vulnerable families can prevent a downward spiral toward debilitating debt, an inability to maintain employment, and homelessness.

THE OFFICE OF HAWAIIAN AFFAIRS
LEVERAGES RESOURCES
TO IMPROVE SOCIAL SERVICES IN HAWAI'I



\$1.00 = \$2.40
of STATE FUNDS TOTAL IMPACT

Improvement in the financial stability and self-sufficiency of families and communities.

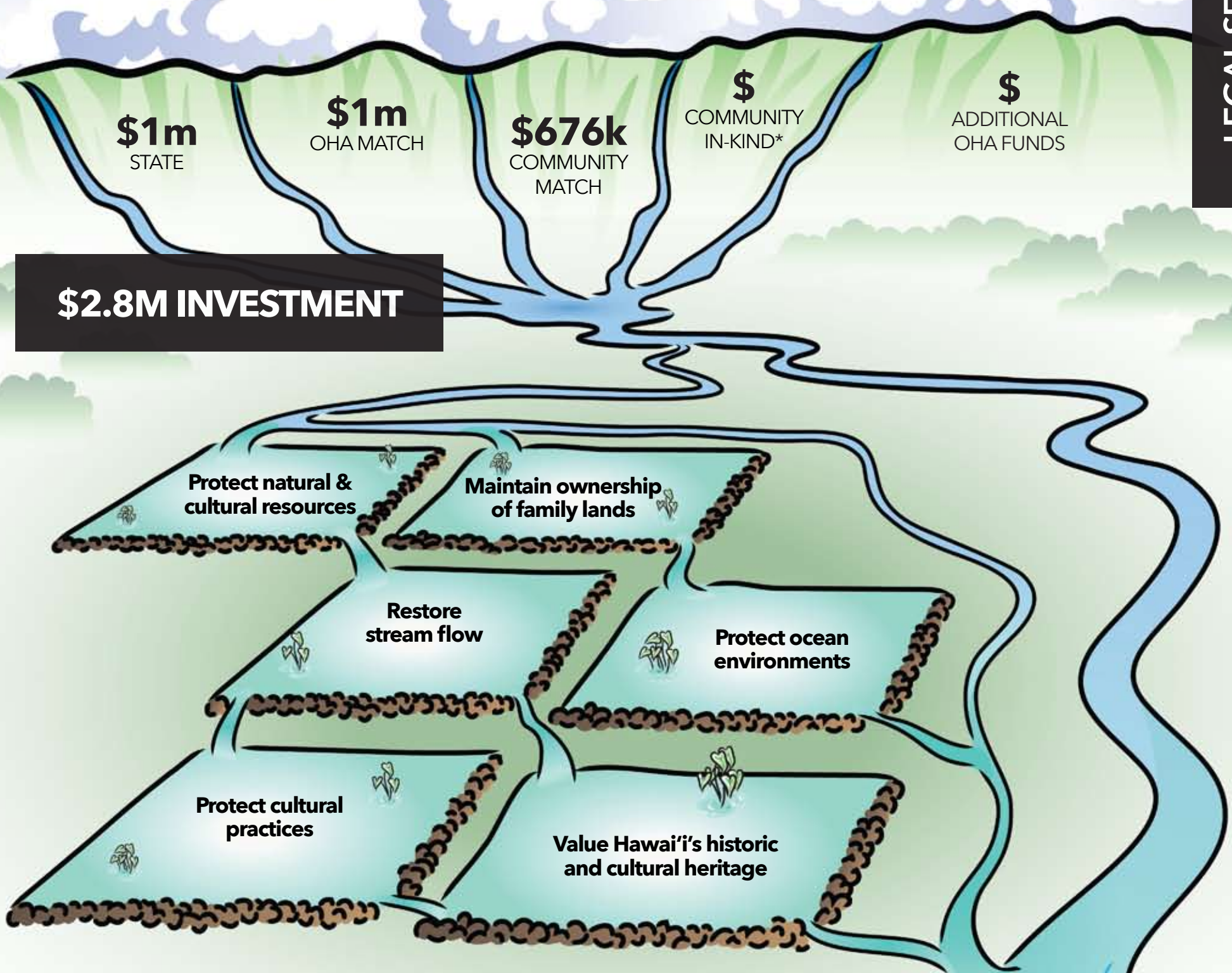
* Value added non-cash contributions



Laws protecting Hawaiian cultural practices are often not enforced. Affordable legal services helps to ensure the enforcement of laws that protect Hawaiian cultural integrity and vitality.

THE OFFICE OF HAWAIIAN AFFAIRS
LEVERAGES RESOURCES
TO IMPROVE LEGAL SERVICES IN HAWAI'I

LEGAL SERVICES



\$2.8M INVESTMENT

\$1.00 = \$2.64
of STATE FUNDS TOTAL IMPACT

Long-term well-being of Native Hawaiian families and communities and integrity of Hawai'i's unique host culture.

* Value added non-cash contributions

