

Native Hawaiians face some of the greatest needs among Hawai'i's citizens. Pooling resources to address these needs is an effective way for the State, private organizations, and OHA to meet shared goals.

THE OFFICE OF HAWAIIAN AFFAIRS
**LEVERAGES RESOURCES
TO IMPROVE HAWAI'I COMMUNITIES**

OVERVIEW

\$4.6m
STATE*

\$4.6m
OHA MATCH

\$1.5m
COMMUNITY
MATCH**

\$
COMMUNITY
IN-KIND***

\$8.5m
OHA FUNDS

\$19.3M INVESTMENT

EDUCATION

HEALTH

HOUSING

INCOME

LEGAL
SERVICES

SOCIAL SERVICES

\$1.00 = \$4.18

of STATE FUNDS

TOTAL IMPACT

* Note: OHA's total biennium request is \$9M: \$4.6M in programmatic funds and \$4.4M for operations and personnel.

** Minimum match required; Actual likely more.

*** Value added non-cash contributions

Strengthening Hawai'i families and communities

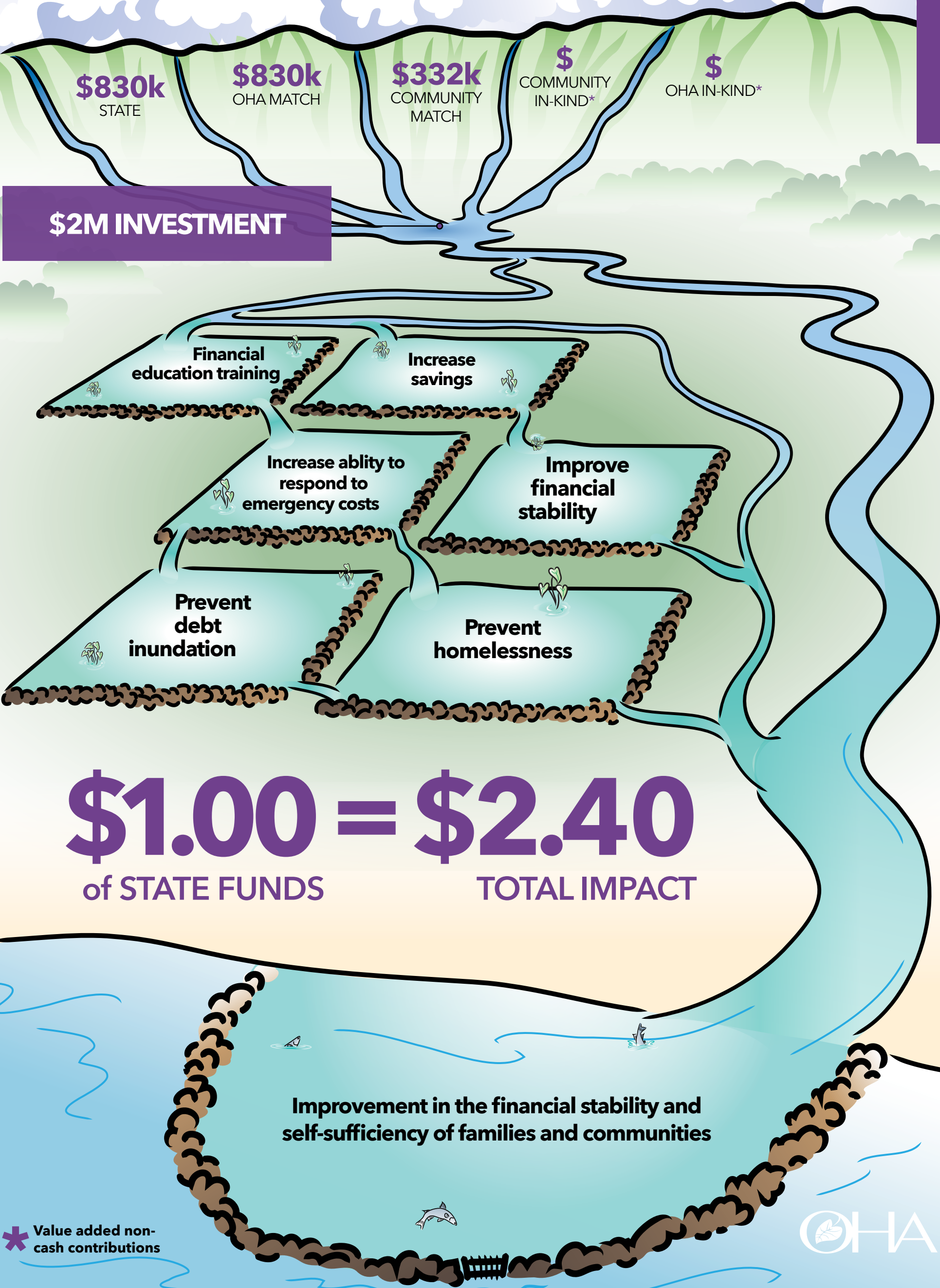
- Facilitate self-sufficiency and productivity
- Increase contributions to society
- Empower community capacity building



14% of Native Hawaiians live in poverty. Providing support for unforeseen needs of such financially vulnerable families can prevent a downward spiral toward debilitating debt, an inability to maintain employment, and homelessness.

THE OFFICE OF HAWAIIAN AFFAIRS
LEVERAGES RESOURCES
TO IMPROVE SOCIAL SERVICES IN HAWAI'I

SOCIAL SERVICES



* Value added non-cash contributions



Access to justice is a critical need of the Native Hawaiian community. Affordable legal services allow Native Hawaiians to uphold their legal rights and ensure that our environmental protection and cultural preservation laws are properly followed.

THE OFFICE OF HAWAIIAN AFFAIRS
LEVERAGES RESOURCES
TO IMPROVE LEGAL SERVICES IN HAWAI'I

LEGAL SERVICES

\$1m
STATE

\$1m
OHA MATCH

\$74k
COMMUNITY
MATCH

\$
COMMUNITY
IN-KIND*

\$
OHA IN-KIND*

\$2.07M INVESTMENT

Protect
natural & cultural
resources

Maintain
ownership
of family lands

Restore
stream flow

Protect ocean
environments

Protect
cultural practices

Value Hawai'i's historic
and cultural heritage

\$1.00 = \$2.07
of STATE FUNDS TOTAL IMPACT

Long-term well-being of Native Hawaiian families
and communities and integrity of Hawai'i's
unique host culture.

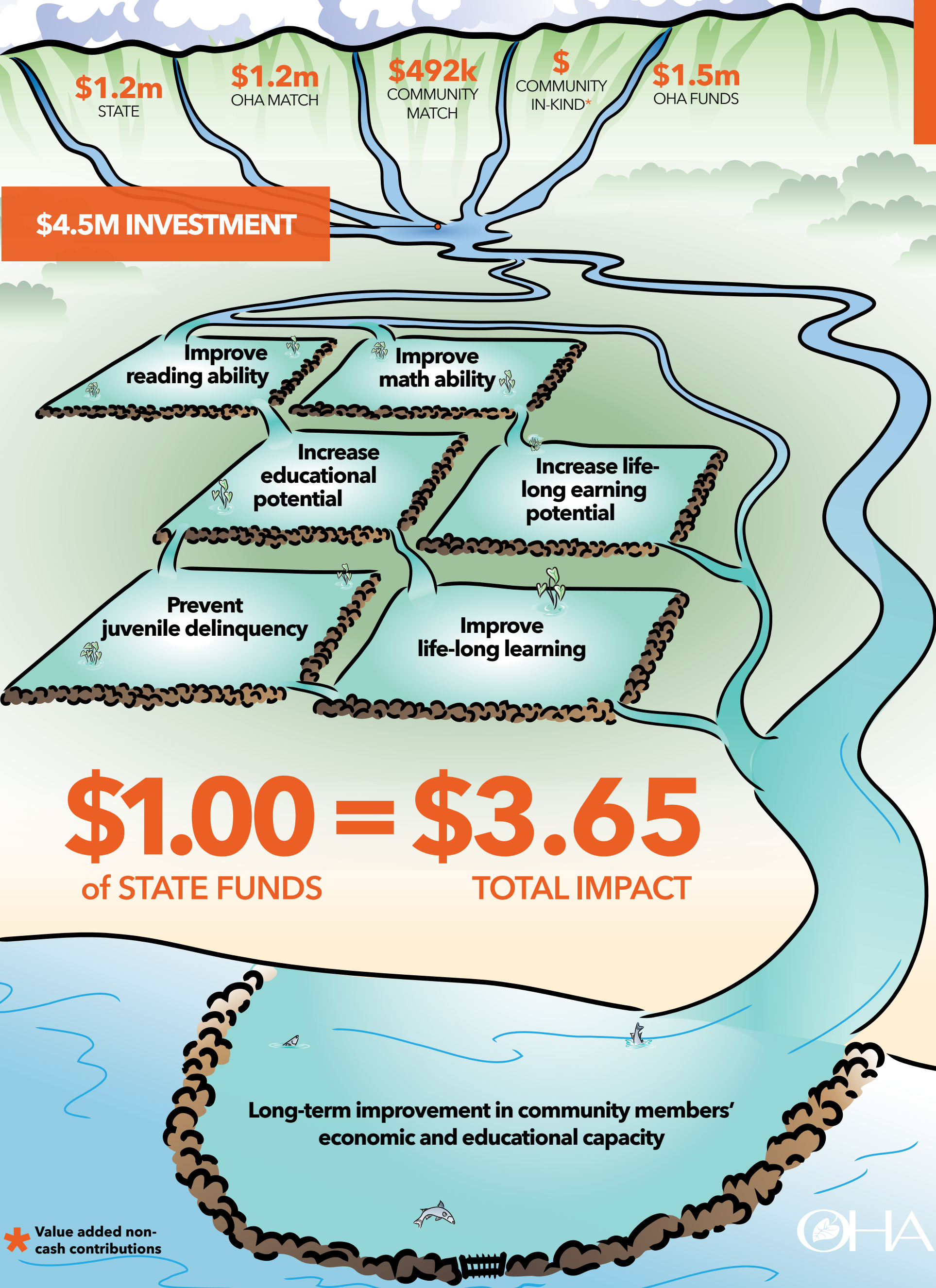
* Value added non-cash contributions



72% of Native Hawaiian students are not proficient in math and 64% are not proficient in reading (vs 58% and 49% of students respectively statewide). Improving these core abilities for students would increase their life-long opportunities in education and employment.

THE OFFICE OF HAWAIIAN AFFAIRS
LEVERAGES RESOURCES
TO IMPROVE EDUCATION IN HAWAI'I

EDUCATION

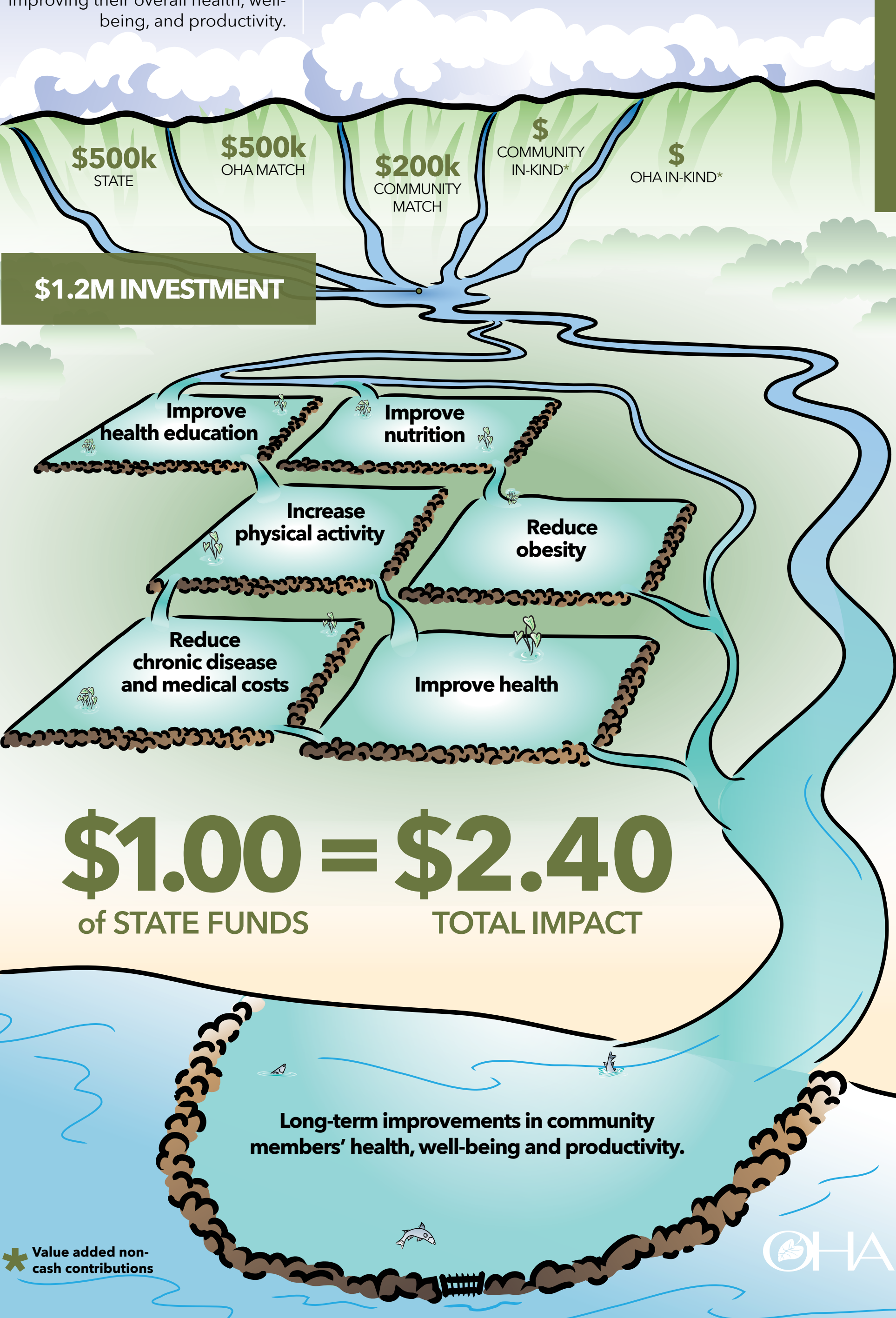


* Value added non-cash contributions

The prevalence of obesity among Native Hawaiians is nearly two times greater than the state average. Decreasing obesity among Native Hawaiians is a key to improving their overall health, well-being, and productivity.

THE OFFICE OF HAWAIIAN AFFAIRS
LEVERAGES RESOURCES
TO IMPROVE HEALTH IN HAWAI'I

HEALTH



55% of Native Hawaiians pay more than the HUD affordable housing rate (30% of household income), creating an unstable situation of financial vulnerability. Increasing the financial viability of such families will improve their ability to achieve stable housing necessary for the overall well-being of families and communities.

THE OFFICE OF HAWAIIAN AFFAIRS
LEVERAGES RESOURCES
TO IMPROVE HOUSING IN HAWAI'I

HOUSING

\$500k
STATE

\$500k
OHA MATCH

\$200k
COMMUNITY
MATCH

\$
COMMUNITY
IN-KIND*

\$6m
OHA FUNDS

\$7.2M INVESTMENT

Increase
financial literacy

Improve
financial
management

Reduce debt
& improve credit
scores

Increase knowledge
of home-rental and
home-buying processes

Increase families
transitioning into
affordable housing

Increase
home
ownership

\$1.00 = \$14.40
of STATE FUNDS TOTAL IMPACT

Long-term improvements in housing stability and
overall well-being for families and communities

* Value added non-cash contributions



Native Hawaiians earn \$9,100 less per capita than the State average, creating significant strains on families, especially under Hawai'i's high cost of living. Increasing income levels of Native Hawaiian families will create the financial stability needed to improve their overall well-being.

THE OFFICE OF HAWAIIAN AFFAIRS
LEVERAGES RESOURCES
TO IMPROVE INCOME IN HAWAI'I

INCOME

\$500k
STATE

\$500k
OHA MATCH

\$200k
COMMUNITY
MATCH

\$
COMMUNITY
IN-KIND*

\$1m
OHA FUNDS

\$2.2M INVESTMENT

Increase GED
attainment

Increase
vocational
skills

Increase
college degree
attainment

Increase
job preparation

Increase
job placement
& maintenance

Increase
earnings

\$1.00 = \$4.40
of STATE FUNDS TOTAL IMPACT

Long-term improvements in the financial capacity
and financial stability of families and communities



Value added non-
cash contributions

