

STATE OF HAWAI‘I
OFFICE OF HAWAIIAN AFFAIRS
560 N. NIMITZ HIGHWAY, SUITE 200
(VIRTUAL MEETING - VIA ZOOM WEBINAR)

Due to the threat of COVID-19, Governor Ige issued the Emergency Proclamation related to the COVID-19 Response, dated August 5, 2021 that suspends parts of Hawai‘i Revised Statutes Chapter 92, Public Agency Meetings and Records to, among other things, enable boards to conduct business without any board members or members of the public physically present at the same location.

The OHA Board of Trustees will hold virtual meetings until further notice. The virtual meetings can be viewed and observed via livestream on OHA’s website at www.oha.org/livestream or listen by phone: (213) 338-8477

Minutes of the Office of Hawaiian Affairs
Board of Trustees
ISLAND OF HAWAI‘I MEETING
MINUTES
Thursday, September 16, 2021
10:00 am

ATTENDANCE:

Chairperson Carmen Hulu Lindsey
Trustee Leina‘ala Ahu Isa
Trustee Dan Ahuna
Trustee Kaleihikina Akaka
Trustee Keli‘i Akina
Trustee Luana Alapa
Trustee Brendon Kalei‘āina Lee
Trustee Keola Lindsey
Trustee John Waihe‘e, IV

BOT STAFF:

Colin Kippen, COS
Amber Kalua, Trustee Aide
Kanani Iaea, Trustee Aide
Lehua Itokazu, Board Secretary

ADMINISTRATION STAFF:

Sylvia Hussey, Ka Pouhana / CEO
Casey Brown, COO
Ramona Hinck, CFO
Kalani Fronda, Land Dir.
Raina Gushiken, CC
Everett Ohta, CC
Ryan H. Lee, Interim Investment Mngr.
Alice Silbanuz, Interim Comm. Engagement Dir.
Kevin Chak, IT Support
Erin Nakama, IT Support
Robert Klein, Board Counsel

GUEST:

Sheri Daniels
Kim Birnie
Sam Chung

Call to Order

Chair Hulu Lindsey Calls the Board of Trustees Hawai'i Island Meeting to order for Thursday, September 16, 2021 at 10:00 a.m. Before we do roll call and as part of Governor Ige's emergency proclamation dated August 5, 2021 Exhibit C, there are new requirements on how public boards and commissions including OHA's BOT and Standing Committees must conduct their remote meetings under the Sunshine Law. As your name is called for roll call, please identify if anyone is present with you in the room. Roll call vote.

MEMBERS			Present	TIME ARRIVED
TRUSTEE	LEINA'ALA	AHU ISA	X	
TRUSTEE	DAN	AHUNA	X	
TRUSTEE	KALEI	AKAKA	X	
TRUSTEE	KELI'I	AKINA	X	
TRUSTEE	LUANA	ALAPA	X	
TRUSTEE	BRENDON KALEI'ĀINA	LEE	X	
TRUSTEE	KEOLA	LINDSEY	X	
TRUSTEE	JOHN	WAIHE'E	X	
CHAIRPERSON	CARMEN HULU	LINDSEY	X	
			9	

At the Call to Order, **nine (9)** Trustees are PRESENT, thereby constituting a quorum.

Chair Hulu Lindsey Due to the threat of COVID-19, Governor Ige issued the Emergency Proclamation related to the COVID-19 Response, dated August 5, 2021 that suspends parts of Hawai'i Revised Statutes Chapter 92, Public Agency Meetings and Records to, among other things, enable boards to conduct business without any board members or members of the public physically present at the same location.

The OHA Board of Trustees will hold virtual meetings until further notice. The virtual meetings can be viewed and observed via livestream on OHA's website at www.oha.org/livestream

Let me go over some quick announcements, please mute your mics when you are not speaking. We are recording today's meeting for the sole purpose of producing written minutes, which will become the official record of this meeting.

At this time, I would like to introduce my staff, Chief of Staff-Colin Kippen, Board Secretary-Lehua Itokazu, and Aides-Kanani Iaea and Amber Kalua. We have Kurt Klein who will joining us shortly, Sam Chung-our Financial Advisor to the Board, and our Ka Pouhana, Sylvia Hussey. I will now call on Sylvia to announce our staff present at this meeting.

Sylvia Hussey, CEO Thank you Chair, we have with us our COO-Casey Brown, CFO-Ramona Hink, Senior Legal Counsel-Raina Gushiken, our Assistant Legal Counsel-Everett Ohta, Land Director – Kalani Fronda, Interim Investment Mngr. – Ryan Lee, along with our IT support staff, Kevin and Erin.

Public Testimony and Community Concerns and Celebrations

Chair Hulu Lindsey I would like to inform the board that I am taking out of order the community concerns and moving it underneath public testimony because we do not know how long our meeting will be. Do we have anyone signed up?

Board Secretary Yes, one person is signed up under public testimony and community concerns.

Germaine Meyers Aloha Chair. Chair is it okay, I plan to speak back-to-back, could I have 10 minutes so that I do not need to be reintroduce?

Chair Hulu Lindsey Yes, you may do that.

Germaine Meyers Aloha Chair Hulu, Ka Pouhana, and lāhui. My name is Germaine Meyers, I'm an OHA beneficiary for beneficiary advocacy and empowerment, I'm also a Nānākuli Hawaiian Homestead lessee. Thank you for the opportunity to share my data, views, and arguments regarding today's agenda IV. item five regarding action item BOT#21-11 accept and implement the recommendations in the OHA Ad Hoc *inaudible*

Colin Kippen, and OHA Chief Operating Officer-Casey Brown. Trustees, I humbly ask you support the four recommendations of the Ad Hoc committee. I sincerely believe your actions will truly show the lāhui, whether OHA has defined purpose and strategic plan were created to support and protect the lāhui. I believe Trustee Brendon Lee continues to undisclose at all OHA *inaudible* the CLA report, his conflict of interest in at least one of the CLA flagged test items. Trustee Brendon Lee personal website, kaleiainalee.com which is titled Kalei'aina Lee OHA At-Large, under the tab "about us" Trustee Lee discloses the following: Trustee Brendon Kalei'aina Lee was elected to the Office of Hawaiian Affairs in 2018. In 2016, Trustee Lee was elected the Chairman of the 2016 'Aha Native Hawaiian Governance Convention. Under his leadership, a diverse group of 120 participants, together found the common ground necessary to draft and adopt a constitution with a vote of 88 favor, 30 against, and 1 abstention. Trustee Lee clearly admits these were 'Aha participants and not delegates, which are outlined in the scope of services as a deliverable. In addition, I will email to all Trustees what members of the lāhui stated about the 'Aha. It is called Na'i Aupuni Gated 88 Constitution. The CLA flagged test item categorized as a contract type grant CLA sample K57 OHA contract *inaudible* \$598,000 I noted on today's agenda OHA is proposing to approve a \$20,000 grant to Papa Ola Lokahi to enable immediate statewide vaccination site collaboration and implementation. In addition, today's agenda is proposing to approve an additional amount of \$13,000 in emergency relief funds to be distributed to address the impacts of Hawai'i island fires. Clearly \$20,000 and \$13,000 is *inaudible* not elected delegates. CLA summarized observations, contract purpose to facilitate election of delegates election and referendum monitoring a governance 'Aha, and a referendum to ratify it. Any recommendation of the delegates arising out of the 'Aha observations potential conflict of interests Native Hawaiian Royal Commission executive director and his wife, who was a board member of Na'i Aupuni no disclosure and the *inaudible* which is an indication of waste of trustee funds. Trustees, I have all these documents, it's public record. The question is, were the scope of services fulfilled as outlined in the grant agreement and defined also in the separate letter agreement, which included how funds would be dispersed? Upon reading the letter agreement, it speaks to Akamai Foundation and Na'i Aupuni must perform the scope of services outlined in the grant agreement. What is the scope of services outlined in a \$2,590,000 grant agreement? *Inaudible* recommendation of the delegates are writing out and rising out of the 'Aha scope of services. The scope of services represents the internal affairs of the Hawaiian community and thus will not exclude those Hawaiians who have enrolled and have been verified by the Native Hawaiian Roll Commission. Clearly, all of the three scopes of services was undelivered.

- The letter of agreement says OHA will give Na'i Aupuni and Akamai atonomy, and they won't interfere with the deliverance of the scope of services in no way, shape, or form agreement say that you didn't have to deliver the scope of services. If that's the case, sign me up for a grant where I have discretion whether or not to produce the scope of services. Sign me up. Ke Akua pū, God bless.
- I am having issues with audio and I will email all of you the conflict of interest with the CLA report.

Chair Hulu Lindsey Okay, you can do that. You are still having audio issues, we cannot hear you. We will move on to item III, status of OHA activities. I will call on our Pouhana, Sylvia.

Land Community Report: Hawai'i Island Executive Summary

Current Issues on Hawai'i Island

Public Safety

- **Police** – 100% of the Police Department's 1,470 officers are Hawai'i Island residents (1,470/1,470).
- **Fire** – 100% of the Fire Department's 1,000 firefighters are Hawai'i Island residents (1,000/1,000).
- **Emergency Services** – 100% of the Emergency Services Department's 1,000 employees are Hawai'i Island residents (1,000/1,000).
- **Public Works** – 100% of the Public Works Department's 1,000 employees are Hawai'i Island residents (1,000/1,000).
- **Health Services** – 100% of the Health Services Department's 1,000 employees are Hawai'i Island residents (1,000/1,000).
- **Education** – 100% of the Education Department's 1,000 employees are Hawai'i Island residents (1,000/1,000).
- **Transportation** – 100% of the Transportation Department's 1,000 employees are Hawai'i Island residents (1,000/1,000).
- **Utilities** – 100% of the Utilities Department's 1,000 employees are Hawai'i Island residents (1,000/1,000).
- **Waste Management** – 100% of the Waste Management Department's 1,000 employees are Hawai'i Island residents (1,000/1,000).
- **Recreation** – 100% of the Recreation Department's 1,000 employees are Hawai'i Island residents (1,000/1,000).
- **Arts and Culture** – 100% of the Arts and Culture Department's 1,000 employees are Hawai'i Island residents (1,000/1,000).
- **Community Development** – 100% of the Community Development Department's 1,000 employees are Hawai'i Island residents (1,000/1,000).
- **Planning** – 100% of the Planning Department's 1,000 employees are Hawai'i Island residents (1,000/1,000).
- **Finance** – 100% of the Finance Department's 1,000 employees are Hawai'i Island residents (1,000/1,000).
- **Information Technology** – 100% of the Information Technology Department's 1,000 employees are Hawai'i Island residents (1,000/1,000).
- **Legal** – 100% of the Legal Department's 1,000 employees are Hawai'i Island residents (1,000/1,000).
- **Human Resources** – 100% of the Human Resources Department's 1,000 employees are Hawai'i Island residents (1,000/1,000).
- **Procurement** – 100% of the Procurement Department's 1,000 employees are Hawai'i Island residents (1,000/1,000).
- **Construction** – 100% of the Construction Department's 1,000 employees are Hawai'i Island residents (1,000/1,000).
- **Engineering** – 100% of the Engineering Department's 1,000 employees are Hawai'i Island residents (1,000/1,000).
- **Architecture** – 100% of the Architecture Department's 1,000 employees are Hawai'i Island residents (1,000/1,000).
- **Interior Design** – 100% of the Interior Design Department's 1,000 employees are Hawai'i Island residents (1,000/1,000).
- **Graphic Design** – 100% of the Graphic Design Department's 1,000 employees are Hawai'i Island residents (1,000/1,000).
- **Web Design** – 100% of the Web Design Department's 1,000 employees are Hawai'i Island residents (1,000/1,000).
- **Software Development** – 100% of the Software Development Department's 1,000 employees are Hawai'i Island residents (1,000/1,000).
- **Quality Assurance** – 100% of the Quality Assurance Department's 1,000 employees are Hawai'i Island residents (1,000/1,000).
- **Project Management** – 100% of the Project Management Department's 1,000 employees are Hawai'i Island residents (1,000/1,000).
- **Business Development** – 100% of the Business Development Department's 1,000 employees are Hawai'i Island residents (1,000/1,000).
- **Marketing** – 100% of the Marketing Department's 1,000 employees are Hawai'i Island residents (1,000/1,000).
- **Sales** – 100% of the Sales Department's 1,000 employees are Hawai'i Island residents (1,000/1,000).
- **Customer Support** – 100% of the Customer Support Department's 1,000 employees are Hawai'i Island residents (1,000/1,000).
- **Training** – 100% of the Training Department's 1,000 employees are Hawai'i Island residents (1,000/1,000).
- **Recruitment** – 100% of the Recruitment Department's 1,000 employees are Hawai'i Island residents (1,000/1,000).
- **Compensation** – 100% of the Compensation Department's 1,000 employees are Hawai'i Island residents (1,000/1,000).
- **Benefits Administration** – 100% of the Benefits Administration Department's 1,000 employees are Hawai'i Island residents (1,000/1,000).
- **Employee Relations** – 100% of the Employee Relations Department's 1,000 employees are Hawai'i Island residents (1,000/1,000).
- **Performance Management** – 100% of the Performance Management Department's 1,000 employees are Hawai'i Island residents (1,000/1,000).
- **Organizational Development** – 100% of the Organizational Development Department's 1,000 employees are Hawai'i Island residents (1,000/1,000).
- **Change Management** – 100% of the Change Management Department's 1,000 employees are Hawai'i Island residents (1,000/1,000).
- **Communication** – 100% of the Communication Department's 1,000 employees are Hawai'i Island residents (1,000/1,000).
- **Public Relations** – 100% of the Public Relations Department's 1,000 employees are Hawai'i Island residents (1,000/1,000).
- **Media Relations** – 100% of the Media Relations Department's 1,000 employees are Hawai'i Island residents (1,000/1,000).
- **Community Outreach** – 100% of the Community Outreach Department's 1,000 employees are Hawai'i Island residents (1,000/1,000).
- **Partnership Development** – 100% of the Partnership Development Department's 1,000 employees are Hawai'i Island residents (1,000/1,000).
- **Stakeholder Engagement** – 100% of the Stakeholder Engagement Department's 1,000 employees are Hawai'i Island residents (1,000/1,000).
- **Policy Development** – 100% of the Policy Development Department's 1,000 employees are Hawai'i Island residents (1,000/1,000).
- **Regulatory Compliance** – 100% of the Regulatory Compliance Department's 1,000 employees are Hawai'i Island residents (1,000/1,000).
- **Environmental Management** – 100% of the Environmental Management Department's 1,000 employees are Hawai'i Island residents (1,000/1,000).
- **Health and Safety** – 100% of the Health and Safety Department's 1,000 employees are Hawai'i Island residents (1,000/1,000).
- **Occupational Safety** – 100% of the Occupational Safety Department's 1,000 employees are Hawai'i Island residents (1,000/1,000).
- **Environmental Health** – 100% of the Environmental Health Department's 1,000 employees are Hawai'i Island residents (1,000/1,000).
- **Public Health** – 100% of the Public Health Department's 1,000 employees are Hawai'i Island residents (1,000/1,000).
- **Maternal and Child Health** – 100% of the Maternal and Child Health Department's 1,000 employees are Hawai'i Island residents (1,000/1,000).
- **Immunization** – 100% of the Immunization Department's 1,000 employees are Hawai'i Island residents (1,000/1,000).
- **Chronic Disease Management** – 100% of the Chronic Disease Management Department's 1,000 employees are Hawai'i Island residents (1,000/1,000).
- **Behavioral Health** – 100% of the Behavioral Health Department's 1,000 employees are Hawai'i Island residents (1,000/1,000).
- **Mental Health** – 100% of the Mental Health Department's 1,000 employees are Hawai'i Island residents (1,000/1,000).
- **Substance Use** – 100% of the Substance Use Department's 1,000 employees are Hawai'i Island residents (1,000/1,000).
- **Smoking Cessation** – 100% of the Smoking Cessation Department's 1,000 employees are Hawai'i Island residents (1,000/1,000).
- **Weight Management** – 100% of the Weight Management Department's 1,000 employees are Hawai'i Island residents (1,000/1,000).
- **Diabetes Management** – 100% of the Diabetes Management Department's 1,000 employees are Hawai'i Island residents (1,000/1,000).
- **Hypertension Management** – 100% of the Hypertension Management Department's 1,000 employees are Hawai'i Island residents (1,000/1,000).
- **Cholesterol Management** – 100% of the Cholesterol Management Department's 1,000 employees are Hawai'i Island residents (1,000/1,000).
- **Heart Disease Management** – 100% of the Heart Disease Management Department's 1,000 employees are Hawai'i Island residents (1,000/1,000).
- **Stroke Management** – 100% of the Stroke Management Department's 1,000 employees are Hawai'i Island residents (1,000/1,000).
- **Alzheimer's Disease Management** – 100% of the Alzheimer's Disease Management Department's 1,000 employees are Hawai'i Island residents (1,000/1,000).
- **Parkinson's Disease Management** – 100% of the Parkinson's Disease Management Department's 1,000 employees are Hawai'i Island residents (1,000/1,000).
- **Multiple Sclerosis Management** – 100% of the Multiple Sclerosis Management Department's 1,000 employees are Hawai'i Island residents (1,000/1,000).
- **Lupus Management** – 100% of the Lupus Management Department's 1,000 employees are Hawai'i Island residents (1,000/1,000).
- **Rheumatoid Arthritis Management** – 100% of the Rheumatoid Arthritis Management Department's 1,000 employees are Hawai'i Island residents (1,000/1,000).
- **Osteoarthritis Management** – 100% of the Osteoarthritis Management Department's 1,000 employees are Hawai'i Island residents (1,000/1,000).
- **Gout Management** – 100% of the Gout Management Department's 1,000 employees are Hawai'i Island residents (1,000/1,000).
- **Chronic Kidney Disease Management** – 100% of the Chronic Kidney Disease Management Department's 1,000 employees are Hawai'i Island residents (1,000/1,000).
- **Endocrine Management** – 100% of the Endocrine Management Department's 1,000 employees are Hawai'i Island residents (1,000/1,000).
- **Reproductive Health** – 100% of the Reproductive Health Department's 1,000 employees are Hawai'i Island residents (1,000/1,000).
- **Contraception Management** – 100% of the Contraception Management Department's 1,000 employees are Hawai'i Island residents (1,000/1,000).
- **Infertility Management** – 100% of the Infertility Management Department's 1,000 employees are Hawai'i Island residents (1,000/1,000).
- **Menstrual Health** – 100% of the Menstrual Health Department's 1,000 employees are Hawai'i Island residents (1,000/1,000).
- **Sexual Health** – 100% of the Sexual Health Department's 1,000 employees are Hawai'i Island residents (1,000/1,000).
- **Gender Health** – 100% of the Gender Health Department's 1,000 employees are Hawai'i Island residents (1,000/1

Housing - 2019, 67,000 total households in Hawai‘i county; 67% of those are owned and 30% rented and 15,000 Native Hawaiians are listed on the DHHL Hawaii island waiting list there as well; and then last but not least, economics ability overall data. In 2015, our Native Hawaiian median household was about \$52,000

or 99% of county wide median. Native Hawaiian median income approximates the overall county median income. That's it in terms of the overall for Hawai'i island. I am going to turn the time over to Alice to give us a brief of our amount.

Alice Silbanuz Aloha Chair, I am very happy to join you today from Waimalu to provide a short update on OHA's COVID education activities being done in conjunction with the NHPI 3R communications team. This is a group of over 60 members working collaboratively to counter the spread of COVID-19 in the Native Hawaiian and Pacific Islander populations in Hawai'i. I've had the pleasure of working directly with the 3R Communications Group since the beginning of the year and we meet weekly to discuss communication strategies and efforts to protect our community from COVID. Battling misinformation has been one of the biggest challenges that has been discussed in the NHPI 3R team. In a survey of people regarding who they trust when making a decision to get vaccinated, respondents ranked doctors as a source of information of highly trusted health information but there was a group that ranked even higher than doctors. That group was our community leaders. Hearing the growing concern from our community leaders for the safety of the lāhui, we created the "I'm vaccinated" campaign. The "I'm vaccinated" campaign amplifies the voices of our community leaders, cultural practitioners, and spiritual leaders and it encourages the lāhui to get vaccinated. Each of these folks are sharing their reasons on why they got vaccinated and this was something that was aired both in our Ka Wai Ola (KWO) and shared on our social media. That is one of the ways we are getting the word out about vaccinations, its benefits and how it's helping to protect the law. Another way that we have been working to get the word out about COVID vaccines is our myth busters series. So with the myth busters series, we're combating misinformation about the COVID-19 vaccine. This campaign was created for those who are on the fence trying to decide whether to take the vaccine. It addresses the fears and rumors circulating in our community about the COVID-19 vaccine. We aired and worked with Dr. Keawe Kaholokula, who is the Co-Chair of the NHPI 3R team, and we address 10 different myths that are circulating within the community, rumors and fears about the COVID-19 vaccines. Because we wanted to get this information out as soon as possible, we didn't wait until the September issue of KWO. We innovated and we sent out an advanced email communication or e-blast that is sent out to over 20,000 people on our email list. This was paired also with a social media post that has been shared on our Facebook page over 700 times and there's a lot of commentary on that post as well. This article was included in the September special KWO insert that was dedicated to COVID-19. It was paired along with three other stories and then, finally, with our myth busters we are doing a video series that will be featuring Dr. Keawe Kaholokula along with Dr. Kalehua Krug, who is the Principal at Ka Waihona o Ka Na'auao which is in the Nānākuli area and is one of the areas affected by COVID. That information is included on our KWO page. We created a new section of the KWO news website that houses the special inserts, the myth busters, and "I'm vaccinated." If you go to that page, which is under Articles health, and then COVID-19, you'll see that our outreach efforts go back a number of months. We are using KWO stories, we've been using the data, featuring doctors and trusted community leaders to get the word out. You will see Dr. Kapono Chong from Kaua'i is featured, Miki Alopecia from Moloka'i was featured, Keaulana from the Mākaha area, as well as Dr. Gerrard Akaka of Queen's. Our articles go all the way back to April of 2020. One last thing I want to say about the NHPI 3R efforts is that we're not only leading by providing campaign materials and sharing out with our partners, but we're also helping to amplify the efforts of NHPI 3R efforts online, Papa Ola Lokahi is helping to sponsor an ask a kauka, a weekly series that airs on Fridays. We have shared this information with our audiences online. Also, the vaccination and COVID clinics, we are encouraging people to get out, only together can we really tackle COVID and help bring the numbers back down. That's the short presentation I have to share at this time. Mahalo nui for your attention.

Chair Hulu Lindsey Thank you so much Alice. That's very helpful and we can see the amount of coverage we are giving it. That's so important for our lāhui.

Sylvia Hussey Just one last thing, e kala mai, Hawai'i Community Assets (HCA) presented last night and the good work they're doing in our communities. HCA is also a part of the occupancy ready work that we are doing with the work group, the State Legislature, as well as other community partners to try to bring together what occupancy ready looks like. That was in the email sent out earlier about this work going on and all of that will come back to the Trustees for approval once we get the programming and all the pieces worked out, we'll bring that back to the Trustees. This is for \$500K on the general funds appropriation that we were given, the board approved the million dollars that was added for the trust funds and so it is programming the \$1.5M over the next two years to be our strategic objectives. So, we will bring that back to the Trustees.

Trustee K. Lindsey I just wanted to say thank you to the administration for putting that report together. I think there is a lot of valuable statistics. They do that for all our islands. Mahalo Ka Pouhana.

New Business

DLNR – Hilo Preservation Center Project

Chair Hulu Lindsey Okay, we will be moving on to item IV. new business, the Hilo Preservation Center Project with Mr. Bob Masuda and team.

Bob Masuda Good morning, we are excited to have this opportunity. Chair Lindsey, good to see you again. I remember your first fundraising thing in Waimea way back, I was there. We are here after talking with Trustee Lindsey and sharing our mana'o about the State Historic Preservation Center plan we have for the island of Hawai'i. Originally, DLNR thought about a small center, one on West Hawai'i and one on East Hawai'i, but as we went into talking with Sean Naleimaile, our archaeologists, we determined that out of all of our State buildings and things not exclusive to the College of Hawaiian Studies of course, which is a beautiful facility, reflecting Hawaiian ideas and values. Our SHPD building should be one that makes use of all of our resources; and we have a growing amount of resources on Hawaiian legacy. We decided to work with the University of Hawai'i at Hilo (UHH) and be located on the Hilo campus in order to provide that resource material for students at the College of Hawaiian Languages on the hill campus, as well as be in proximity with 'Imiloa Astronomy Center and the College in order to create a reservoir of resources on Hawaiian history, legacy, culture, and reference material. We're proud of our island of Hawai'i's sense of culture so we thought this would be a great way to feature our resource material with something that reflects a today, a future, and past sense of Hawaiian culture. So, I'd like to call on Sean Naleimaile, archaeologist from SHPD for a few words and architect, Fred Erskine who is a graduate of Kamehameha and born on the island of Hawai'i. They will do a short presentation to share with you what the facility is planned for and what it will look like. We are not here to ask for money or anything, we just want to share with you what our hopes are. Our expectation is if you should support it and feel in kinship with us for this effort, that OHA might support the concept and at the appropriate time, at the legislature or elsewhere along with any other Hawaiian organization, support this particular facility on the UHH campus.

Sean Naleimaile, SHPD Good Morning, aloha Chair Lindsey, Auntie Hulu, and everybody else, it's an honor to be able to speak to you folks this morning and I am fortunate to be able to speak to something that's near and dear to my heart, my career, and the cultural resources of this place that we call home. I just wanted to say aloha and I was hoping that I could let Fred begin the presentation and I think there'll be a point in the presentation where I can maybe add some discussion points as far as why we need this facility and what

drove us to get to this point. So, I just want to say aloha and I think I will let Fred, our architect, begin his presentation.

Fred Erskin, Architect Hello, hi everyone, my name is Fred Erskine and I'm with Erskine Architects Incorporated; and then Sean just mentioned I'm a consultant to DLNR and I've been helping them with this project for about two years. Good morning trustees and thank you very much for giving us this time. Don't mind me I'm going to try and speak quickly, I'll try to get through here. I know everyone's time is precious. Like they mentioned, this is the State of Hawaii DLNR East Hawai'i Historic Preservation Center. We'll give it an appropriate Hawaiian name at a later date, but right now it's called East Hawai'i Historic Preservation Center and it's located at the UHH campus. I learned to put the image in the front of the presentation instead of in the back because I've run out of time in prior meetings, so I wanna make sure you guys at least have an image on the facility just in case you don't get there.



Okay, why is there a need for this project? The DLNR State Historic Preservation Division (SHPD) faces several infrastructure and operational related challenges and this project will address these challenges. Sean, maybe you can jump in and talk about some of these challenges.

Sean Naleimaile, SHPD Right, so several years ago right before I first started with SHPD back in 2012, our former branch chief Theresa got a call from Paul Rosendahl, he was an Archaeologist here in Hawaii for many years. He was retiring and going out of business so he call and stated he has all this stuff, do you want it? Or its going to the dump and, of course thankfully, my former Branch Chief said no, we'll take it. So, we got everything from this collection, over 40 years of research and work in Hawaii, and we brought it here to our facility in Hilo. At that time, we held everything at the facility but over the years the facility has become a challenge. During the course of that time, you know there has been discussions about how to facilitate the caring for those artifacts that came from Mr. Rosendahl, as well as years and years of research materials, including maps and all different information thats valuable to the understanding of the historic properties and history here. We have all this stuff and it's in a warehouse that leaks, it's terrible, we'll show some pictures later on. I brought it up with Deputy Masuda, at the time Senator Kahele, Senator Ruderman and said we need some help. We need to figure out how to take care of this stuff because SHPD is by law, a repository for artifacts so when they saw the facilities, a lot of them were kind of appalled that we kept those things in such a dire situation and long story short, talks began and because SHPD is the repository for such things, we should be following Secretary of Interior standards. Since we don't have the storage capacity at any of our facilities, this is the perfect place to do it. We could have a state of the art curation facility that you know takes care of all that stuff the way that it should be, and as a State Agency, we should make that a priority, and this facility, I think, really will do that. It came up in previous meetings that there is Bishop Museum but there is challenges there as well. They have a hard time accepting anything new because of the structure, they are in a very old building. So, you know, we want to be able to provide this kind of service to our community so that they know that we are doing the best that we can to care for the cultural resources that we have of Hawai'i.

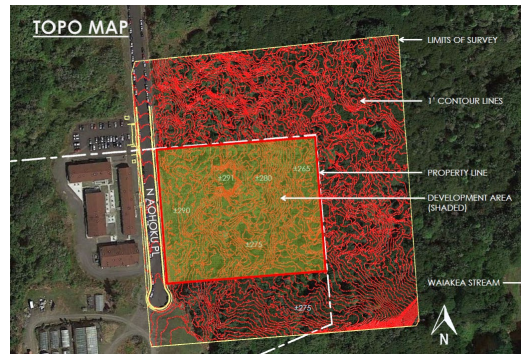
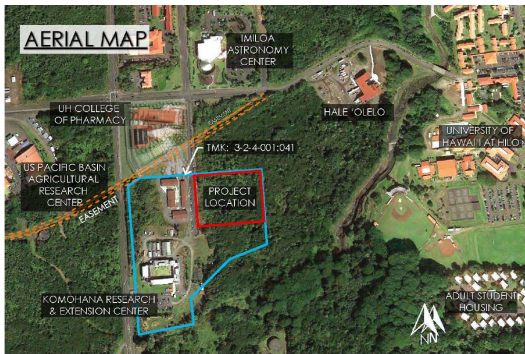
Fred Erskine, Architect Bob, can you discuss a little bit about the operational challenges and how the relationship that will be built between UHH, as well SHPD, and how this will be mutually beneficial.

Bob Masuda, DLNR Let me just say that we are working very closely, we think UHH is a great place to really promote our Native Hawaiian culture and its history to the current and future aspirations. Given the College of Hawaiian studies, we've worked with keiki over there and at 'Imiloa in discussing what SHPD might be. Besides keeping priceless objects, material, information, and legal documents in a more protected state and curated properly, we felt that this might be a place that Hawaiians can take pride in because it reflects their sense of values and history. The way Fred and his team has laid out the facility, it incorporates the six mo'okū'auhau of Hawai'i island, eventually as we are able to complete the entire facility, we hope this will be the kind of place that people can bring their visiting guest or their family to research their family background, look at photos that are not readily available, stuff that most families would not have. They can come to a place and get the assistance from our staff in doing research on the places where their families come from.

Sean Naleimaile, SHPD In terms of your relationship with UH, right now, for a while and some of you may know somebody may not, but we struggle with getting staff. Recently, within the last year and half we were fortunate enough to hire three people from Hawai'i island. Two are working with me here on Hawai'i island and one is working from Hawai'i island but is doing Maui reviews. The connection here is all three of them have connections of going to UH Hilo and it is helpful when you have that kind of relationship with the students that have gone through the different programs. It is very helpful that they have connections and understandings and to have the values of what is going on in the community. It is very beneficial for us to foster that relationship with the college to train students to do this kind of work, especially when they're connected to a place.

Bob Masuda, DLNR Yes, we've had a merry go round of people we hire from the mainland come in, they stay for a year and then they go back. What we are looking for is young people; Hawaiian or non-Hawaiian who speak Hawaiian, who have gone to UHH. We're engaging UHH administration. We have three areas; archaeology, anthropology, and land asset management that we want to create graduate programs and master's programs so that there's a double major in Hawaiian studies and Archaeology, Hawaiian studies/Anthropology, Hawaiian studies and Natural Land Asset Management. This kind of a double major, we would then be hiring young people who speak Hawaiian, who would love to live and work forever in Hawai'i, and who's work makes use of their language capability and helps local families. That's a project we are in the process helping to developing with UHH.

Fred Erskine, Architect Okay, so I don't think I need to explain any further, to quote Bob "it's a dump," the building is need of repair. We had to put tarp over the over the material to protect it from the rain inside the building so all of our material is temporarily stored at Matson container. The project location is the UHH, the main campus area. This is Komohana here and Nahoku running here. You can see 'Imiloa and Hale 'Ōlelo, we are in the red box. I should note, our site is covered in vegetation. What we have uncovered while doing this due diligence is that site has been heavily disturbed in the past for agricultural purposes.



So, even though it is heavily covered in vegetation it is a good site for development. Please bare with me as I read this. It's important for us to explain the concept so you understand why this circular shape and why things are arranged in the format that they are. So, the Waiholu ripple concept, the take away is the drop of water, the larger body of water, a void, and results in ripples. The ripple concept draws inspiration from the chain of events that happens when a drop of water lands in a larger body of water and then soon the ripple effect which radiates out from the center, this radial pattern of concentric circles is used to organize the design of the facility. The ripple concept can be further explain as follows, Hawai'i represents the drop of water, the Pacific Ocean represents the larger body of water, and the ripples represent Hawai'i's cultural and environmental evolution. At the center of the facilities, a circular pool of dark water or void here, enough to refer to as piko. The piko was caused by the drop of water making the geological beginning of time. Surrounding the piko are the ripples that tightly space and pronounce rippled landscape immediately circling the pool represents the early formation of molten lava rising from the dark depths of the sea, the ripples closest to the piko are indicative of a young volcanic landscape. As the ripples move further away from the piko, they become less pronounced in height and frequency. Ground cover near the piko is jagged and young eventually changing to weathered and eroded of the outer limits of the ripples. The landscaping follows a similar pattern, plants are close to the piko are frequent and sparse. The vegetation eventually increases in density as the distance to the Piko becomes greater. The more densely vegetated areas of the space is where Hawaiian habitation and culture flourished. This is where the facilities buildings begin and will be organized following the same Waiholu concept. So, we're looking at two, possibly three phases of development; phase one would be immediately. This means the replacement of the facilities. So, we'd have a SHPD office building and then an archive building. This archive building will be sized appropriately to store all of the known artifacts that are there already being stored, plus a little extra room. Phase two would be second archive building, as well as the formation of the interior portion of the development.



Here is the piko and you can see the ripples radiating from the piko. These are the moku, one for each of the six moku on the Big Island. All of these would be outdoor exhibit spaces. The exhibits that are portrayed outside will be unique to that particular moku. Possibly a phase three would take place on top of the bench area, it could be another archive building or a multi-purpose space. The point is that its undefined at this time but it can fulfill any need that DLNR or UHH needed at that time. You will see that native landscaping, the shape of the warrior helmet design and other aspects. The development size is about 14,000 sq.ft.

Bob Masuda, DLNR It will also be energy efficient. What you don't see is all of the PV and other kinds of modern energy saving equipment and technology.

Trustee Alapa In the helmet, I see people in there. Is that a display?

Fred Erskine, Architect Yes, it would be an outdoor exhibition space. Sean, would have to carefully determine which exhibits go in there to be displayed. We do recognize that this is Hilo, we have rain.

Bob Masuda, DLNR We want to create a sense of openness but also be realistic about weather protection so that it can be used for gatherings and sharing. Families can come, go to the exhibits of where they are from and see what the area was like with documents.

Trustee Alapa Will you be rotating displays?

Bob Masuda, DLNR We could.

Trustee Akina I just want to say to Bob and the whole team, what a wonderful vision you have cast. What a beautiful rendering. It is lovely, functional, and very appropriate for the Hawaiian people and all people of the State. Mahalo for your work.

Bob Masuda, DLNR Thank you, that is what we want. We want people to walk in and get chicken skin because they feel the spirit of the place. Sean is tasked to work with other talented and creative people to create a song for this place.

Chair Hulu Lindsey I want to ask what is your timing?

Bob Masuda, DLNR We are in the process of going to the Legislature to ask for more planning and engineering funding. We are exploring all of this now.

Trustee K. Lindsey I would like to mahalo Bob, Sean, and Fred for their presentation. My team and I will continue to work with them in discussion, as this process moves forward.

Bob Masuda, DLNR Thank you Trustee Lindsey. We are also proud have been a co-sponsor of the 'Āina Summit with OHA, Kamehameha Schools, and DLNR. Also, we have a co-hort of Hālau 'Ōhi'a going on once a month out in Waimānalo. Kekuhi takes a group of over a dozen of DLNR young professionals. They are learning all sorts of things. 10-15 years from now, they can talk to each other and call each other. All of our management land leadership will have a sense of value and understanding, that is what we are looking for.

Trustee Akaka Aloha Uncle Bob, good to see you. Mahalo to Sean and Fred. This is impressive and I want to mahalo you folks for taking this kuleana on. You really get a sense of place from what we are able to see from the rendering. Kala mai Uncle Bob, you wanted to say something?

Bob Masuda, DLNR I just wanted to say that it's your father's inspiration.

Trustee Akaka This is nice to hear, I never heard about this *inaudible*

Bob Masuda, DLNR It's like the Akaka Foundation for tropical forest, in which I had the privilege to found with your Dad. It's moving forward, celebrating our history and our best.

Trustee Akaka What I wanted to ask you folks is what our chair was asking, in terms of the timeline, when do you envision the groundbreaking will be?

Fred Erskine, Architect I think that there's so many moving parts, as you know in the state government, that is difficult. I don't know, I heard Brandon Kim say 2024 so let's go with that for phase I.

Bob Masuda, DLNR First, we want to make sure that we share with our Native Hawaiian organizations and get their feedback. We are in the process of doing that now. Your feedback today has been very encouraging, so as we work with other Native Hawaiian organizations, especially on the island of Hawai'i, then we want to do that first, then we'll present all of this and the support to the legislature. Get some legislature funding as well as possibly some federal funds as part of department of interiors work on cultural preservation, so we have some people are researching all of that. The reason you see the open space is our first project we decided to go all out, but the cost is too much so we had to cut back and go in increments, that's why we have phase I, II and hopefully III. It's a work in progress and it will be built in phases because it is not a cheap thing.

Chair Hulu Lindsey Bob, one last question, out of curiosity, is this a UH project or a DLNR?

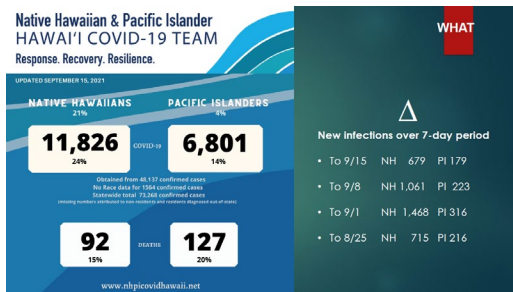
Bob Masuda, DLNR It is a State DLNR project, it will be owned by DLNR and the State, so you folks are part owners as part of the State. As you know SHPD is all about Hawai'i and Hawaiian culture, our Governor is so supportive with all Hawaiian things but he is blasted with all kinds of problems. He's very supportive of our pushing this kind of stuff just like he was of 'Āina summit. I am working as hard as I can, I'd like to see the concept and the groundbreaking happen, you know before the end of next year. You certainly will all be a part of that. By then our composer, Sean Naleimaile, will have the song for this place.

Chair Hulu Lindsey Okay, thank you very much. The trustees will discuss this along with our administration and we will keep in touch with you. Thank you for your presentation.

Papa Ola Lokahi – Native Hawaiian & Pacific Islander HI COVID Response

Sylvia Hussey, CEO Today, we have Papa Ola Lokahi, Sheri Daniel and Kim Birnie, joining us.

Kim Ku'ulei Birnie, Papa Ola Lokahi Mahalo nui Chair, Trustees, Ka Pouhana, and the lāhui. Mahalo nui for the opportunity to present some of the activities that Papa Ola Lokahi has been involved in, in response to the COVID pandemic over the last year and a half, and some of our plans for the future. We've got two parts to this presentation, I will be taking the first part. First of all, know that we have been tracking the data since March of 2020. We've been tracking the data on COVID for Native Hawaiians and Pacific Islanders, and the status as of this past Wednesday is 24% cumulatively of all infections belong to Native Hawaiians, 14% for Pacific Islanders. This definitely is a disparity in both cases, it exceeds the general population across the Hawaiian Islands. What is really dramatic is the rise in Native Hawaiian infections since the beginning, since the delta variant was introduced. In early July, our numbers have gone up exponentially. We've gone from 14% to 24% and about this time last summer of 2020, Pacific Islanders we're just under 60% of all COVID infections. They have really gotten a hold of the situation through education, through vaccinations and now



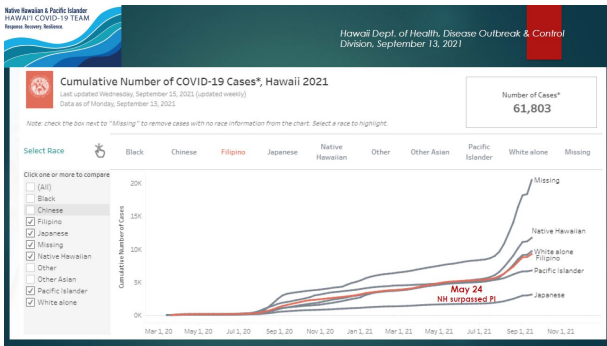
they are still overrepresented considering the population is 4%, but 14% compared to almost 60% is quite a lot of work, quite a big achievement on their behalf. This is the last month of new infections over the seven-day period. The week ending September 1st, Hawaiians alone had 1400 infections in a seven day period. This went down a little bit last week and we're doing even better this week, so these are the numbers that we're tracking every week and they're helping to inform how we respond to our community's needs.

One of the first things we did last spring, we were following the discussion on kanaka twitter. I don't know if any of you follow that but in March, there were some discussions across the country about what are the numbers for Hawaiians, what are the numbers for the aggregate NHPI and we started to ask our own Department of Health, and really none of those numbers were reported until June. Nevertheless, we came together with a lot of other partners in May of 2020. We are aligned with the National NHPI COVID response team, all four of our co-leads and also our policy coordinator meet in national meetings. One of our main purposes is to improve the collection of data, particularly around Native Hawaiians and even an aggregate with Native Hawaiians and Pacific islanders. What is the situation? We didn't know what it was until June of last year so we want to improve that data collection and reporting to lend support to some of the activities that were already taking place. Our intention wasn't to develop a program or a campaign or any initiatives, it was simply to bring partners together to find out, to scan the environment, see what's going on and to support local initiatives. And finally, to unify and have a seat at the table where decisions were being made and where there were no Native Hawaiians or Pacific islanders, particularly in early 2020. We have a co-leadership model, two Native Hawaiian co-leads and two Pacific Islander co-leads, one is Micronesian and one is Samoan. We think we have some diverse leadership.



We have more than 60 partners of organizations, agencies, and offices. We have five working committees, many who are back meeting every week. There is a Pacific Islander sub-team, a Native Hawaiian sub-team where the leadership of the different Hawaiian serving organizations come together once a month and talk about what's going on at that higher level issue so again, the data was really important. We were tracking it from March and in the first half of 2020, our numbers were looking pretty good compared to

other States across the United States. We were already looking at what we would do for recovery, and then we're looking at resiliency and how we would take this and address the disparities overall, and that was until August of 2020 when we had our big surge and then the New Year, we started to plan for recovery again and then July has just sent us all back out in the field and meeting hours a day. On May 24th of this year, for the very first time, the Native Hawaiian infections surpassed that of Pacific Islanders within a couple of weeks. We had passed the numbers for the Filipino community and our numbers have been going up exponentially ever since.



So our data collection and research committee, we've had great OHA representation Carla Hofstetter, this committee is chaired by Dr. Lisa Watkins Victorino and Sharde Freitas who also participates on this committee. One of the great successes, I think overall, is the advocacy that we've done to get the state of Hawai'i, not only to report on the NH and PI numbers, but we are the only state that disaggregates Native Hawaiians and Pacific Islanders separately. In fact, there are 30 States and the District of

Columbia that report NHPI and aggregate, Hawai'i disaggregates. There are 19 states that don't report NHPI at all, so that's one of the great successes of the data collection and research committee. We don't use the term best practices around COVID because really everything is emerging, the knowledge is emerging, the data is emerging, the practices are emerging, and we are evaluating. The whole world is doing this, so this is some of the emerging knowledge that's coming out around COVID in our communities.

Testing, tracing, and isolation was done earlier this year when vaccines were released. They took on the vaccination efforts as well, and this one is back to working every week, meeting every week, and there's a lot of work going on and I'll describe some of the outreach events that we're involved in now. Policy has involved; Carla, Sharde, and Wayne Tanaka have been involved here. There are a lot of different efforts, starting last year with having input into the safe travels initiatives, some of them were unique to Kaua'i; and then pretty soon, the state started to engage in developing policies that most of us are now familiar with as well, so here's just a sample of some of the activities that policy has been involved in.



Social supports and recovery, again these were originally two different committees. We put them together in 2020 because we were already looking ahead to recovery but many times over the last year, we've had to take a step back and really make sure that our social supports and services and programs are in place. The process that we've gone through is to scan the environment, find out who's doing what, assess the needs of our communities, identify where there are gaps, and facilitate

partnerships if we can. We have looked around at developing different programs and services and working with others, with our partners, to fill in the gaps that are needed in our communities. Evaluate, refine, pivot, and reassess. Communications has been a big effort and mahalo to Alice and to others in the communications office there at the Office of Hawaiian Affairs. We have worked with many communications folks across the different Hawaiian and Pacific Islands serving organizations here. The recommendations in June of 2020 was that we needed more PSA's on radio and TV; that we needed to invoke cultural and historical messaging to really reach our people; and we need more in language outreach. We've done all of those things, mostly in partnership, but the NHPI 3R and Papa Ola Lokahi individually have been involved in many of these efforts.



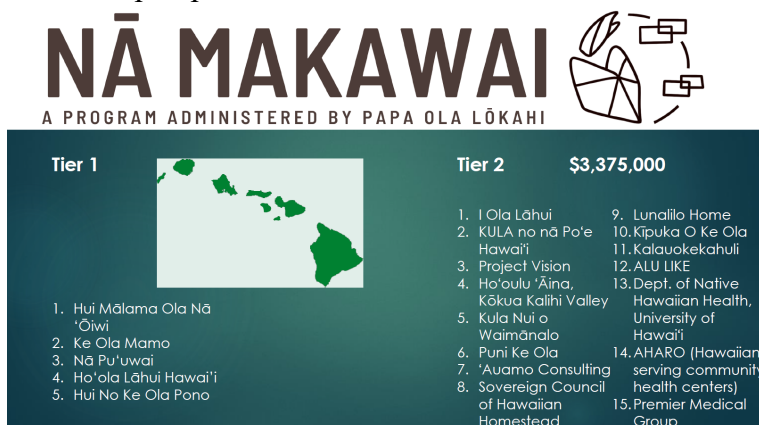
These are some of the early graphics that came out. The Department of Health (DOH) was the go to place for in language resources. They now have 19 Pacific Island languages and we have contributed to the 'ōlelo Hawai'i, and some of our partners have contributed to the Micronesian languages for the COVID resources. The DOH has material in 29 different languages. There's been a lot of media since early 2020 and webinars. We've had at least two art contest, tik tok challenges, Lāhui Kanaka, as you know arose out of OHA and the kumu hula, that was a beautiful

campaign. There have been at least five concerts in 2020 and we had a couple more this past summer to raise awareness. None were fundraisers, they were all awareness raising events. We implemented a radio campaign this summer. We've got a lighter one going on right now, but we may return to a little bit heavier one such as this one, where we had very intentional speakers and messages to get vaccinated. Signage, we've implemented mall signs. This is at Ka Makana Ali'i and Windward Mall. More than 540 bus signs have been placed in central O'ahu. We have collaborated on a couple of different tool kits, this one woven with elders. We collaborated on this when vaccines were only available to elders, it's not quite as relevant anymore. I also want to acknowledge all of the external communications that come from our many partners that are listed here. Last year, every week we offered up a new hashtag, that was fun. We're recycling these somewhat, and developing tons of PSA's. What's new for 2021? Well, vaccinations began at the end of 2020. We have looked at planning for recovery and we are also looking at policy. How can we plan for the next legislative session or at the federal level. Right now, when it comes to vaccinations, 65.8% of the population that is eligible are vaccinated. It has taken us more than six months to get beyond 50%. The DOH does not publish this number anywhere; the data is incomplete to get a real accurate number just for Native Hawaiians but by extrapolating from other data sources over the last six to eight weeks, they estimate 32-35% of Native Hawaiians are vaccinated. You can see that is far short statewide. I think we've made some progress over the last few weeks. Mahalo to Trustee Lee who turned up at Nānākuli Villages for the testing and vaccination pod, point of distribution event. We're really grateful that you were there and had a chance to see what's going on and is probably responsible for why we are here today. Again, these are our 2021 recommendations and we can share these with you more broadly, but across all the different committees, we do have some recommendations that we're promulgating to the counties, the State, to other Hawaiian and Pacific Islands serving organizations that seem appropriate. Recovery planning, we looked at some of the other plans that exist and swapped it to see where those points of intersection are. We looked at the feminist recovery plan and found a few things that resonate with the way we are addressing Native Hawaiian-Pacific Islander communities. Again, we're not trying to duplicate. We want to acknowledge and identify what else is going on and see what we can build on. The status is 11,826 Hawaiians have had COVID in the last year and a half. We do have data by zip code and that's what we're working on now to determine where we reach out into the communities. By request, it will be based on data, high infections, low vaccinations that drives where we plan these distribution points. I'd like turn it over to Sheri now to talk about some resource partnerships and then move into where we are going and what we're going to launch in a month or two.

Sheri Daniel Mahalo Kim. Aloha and Welina mai kākou, mahalo to Trustee Lindsey for inviting us to share what we have been doing over the last year. Where do we go from here and some of the things that are on the horizon. I want to be clear with the trustees that funding for the work that we've been doing over the last 18 months did not come in until November of 2020. That's when the our 3R team got our first kind of funding stream and that was through the CARES monies through the City and County of Honolulu. That was really it, a half a million dollars, and the bulk of it went to Pacific Islander communities as we knew that their numbers were higher. Prior to that, a lot of this was through volunteer efforts with our partners, as well as POL putting in the backbone support of staff and using our own federal dollars to move some of the initiatives forward. So, I wanted to say that a lot of these partnerships, POL served as the fiscal agent and the pass through to move monies from those organizations into communities in a variety of ways. I think the big question that's on everybody's mind is, there's \$20 million that came in via the American Recovery Rescue Plan Act of 2021; we know that it got allocated to the Native Hawaiian Healthcare Systems Act, so what does that mean? We want to point out that over the last 18 months and especially since March of 2021, a lot more dollars were put into this Rescue Plan Act. Of all the monies that you see, \$20 million came to Native Hawaiian Health so of the \$6.1 billion to Hawai'i, that was a specific carve. I do want to point out that prior to that,

federally qualified health centers other entities did have access and did receive CARES dollars, None of our Native Hawaiian Healthcare Systems nor Papa Ola Lokahi received any CARES money except for the pass through from the City and County of Honolulu. What is our plan for using our ARPA dollars? Well, we've actually named it, Nā Makawai. We recognized that this \$20 million, seperate from our other funding, this ARPA dollars is a one-time two year project. We also recognize that the value of that \$20 million is actually much more than \$20 million and we want to capture what that means for the health of Hawaiians. We broke up our project into two tiers. Of the \$20 million that came through this, our five Native Hawaiian Healthcare Systems had direct funding through this mechanism, about \$15 million are going to these systems. Again, ARPA dollars are very specific, they have six areas that they have to cover. They have to have already been doing the work in those areas specific to COVID as well as, it has to be in Hawai'i, Native Hawaiians. This restricts the type of support we can provide through these dollars. A lot of our systems, they're looking at workforce development, enhancements, making sure they have the staff to go out and do outreach to communities across the state; several of them are acquiring mobile clinics. They can then partner with other community partners, homesteads, schools to actually put their mobile clinic in those areas to help support families not only with COVID awareness and outreach, but we're looking at how we can also create sustainability moving past COVID in the recovery stages where those clinics or those mobile units can be used as educational sites or regular medical facilities.

The second part of Nā Makawai, the dollars that come into Papa Ola Lokahi. In total, and again this is a two year project, it ends in July of 2023, Papa Ola Lokahi is getting \$4.7 million, of the this amount over the two years, \$3.375 has been earmarked for tier two partners. These are our trusted community partners that can enhance and provide deeper community services across the state. Again, they had to already be doing the work in the COVID area. You can see number 14, AHARO, is actually a consortium of five federally qualified health centers including Waimānalo, Wai'anae, Bay Clinic on Hawai'i island, Hāmākua, and Moloka'i. We were able to touch up kūpuna services, mental health, homestead services.



We really tried to capture all the islands. We wanted to spread our resources and create leveraging opportunities. Our scope of work is focused in on COVID response including accesibility, education, vaccination, capacity, and deliverance. We're actually going to be collecting data specific to Nā Makawai from both our tier ones and our tier twos. How do we help both our tiers develop capacity? What other data points do we want to collect to help them demonstrate the services and the value of their services as well within their community? From there, we're going to be developing an evaluation tool and model so that we can look over the last two years and really start being focused in on what works, what model of engagement could be applied in other settings. We're looking at creating an engagement model with our partners so that we're just not giving them money. We are meeting with them monthly as a cohort, they're actually working on developing their capacity to sustain as an organization. Looking at capacity building on board development, on fiscal management, all of those things that can help them improve the sustainability of them

continuing services; how do they write for grants? We want to provide a network or a net of safety for them. Then after the two years, we open up the net, they'll be able to stand and explore other funding streams. We will also be developing a leadership hub for our partners, this also ties into creating sustainability for them that, if these entities identify a staff member that we can help build their skills of leadership, then we're helping to build the work force of the next generation. I did want to just kind of cross walk over; so why is this like, why is this Papa Ola Lokahi's kuleana? Because we have the kuleana and the responsibility of the Native Hawaiian Improvement Act codified in federal law. In our Act, page 15, subsection 7, you folks, OHA, are named as one of our required Board seats, that is where you folks come in and provide that overview. The collaboration of us together on how we can better serve our community, our lāhui around health physically and bridging education, housing, and other federal acts together. It's really about social determinants and a holistic health motto, all these other things that impact our community. I hope we answered all of the questions, both Kim and I are here to answer any questions. Mahalo again.

Chair Hulu Lindsey Are there any questions Trustees? Well, there are no questions and we thank you so much for your presentation.

Trustee Akaka I want to also mahalo Kim and Sheri for all of your work.

Trustee Akina Mahalo for the great presentation and all the work you are doing for our Hawaiian people.

Chair Hulu Lindsey Yes, mahalo for keeping our Hawaiian people healthy. We will take a five-minute recess and come back on at 11:46 am.

Board returns from recess at 11:46 am

Chair Hulu Lindsey I will call on Trustee Akaka for item IV under new business.

IV. 3. A. Action Item BAE #21-04: To Approve the First Term Native Hawaiian Revolving Loan Fund Board of Directors, Maui Island (Wayne Wong) and Hawai'i Island (Kristin Kahaloa) Nominations

Trustee Akaka Chair Lindsey,

Your Committee on Beneficiary Advocacy and Empowerment, having met on September 15, 2021 and after full and free discussion, recommends approval of the following motion to the Board of Trustees:

A. Action Item BAE #21-04: To Approve the First Term Native Hawaiian Revolving Loan Fund Board of Directors, Maui Island (Wayne Wong) and Hawai'i Island (Kristin Kahaloa) Nominations

Trustee K. Lindsey Seconds the motion

Chair Hulu Lindsey Any discussion? Roll call vote.

Trustee Akaka moves

To Approve the First Term Native Hawaiian Revolving Loan Fund Board of Directors, Maui Island (Wayne Wong) and Hawai'i Island (Kristin Kahaloa) Nominations

Trustee K. Lindsey Seconds the motion.

	1	2	'AE (Yes)	'A'OLE (NO)	KANALUA (ABSTAIN)	EXCUSED
TRUSTEE LEI AHU ISA			X			
TRUSTEE DAN AHUNA			X			
TRUSTEE KALEI AKAKA	X		X			
TRUSTEE KELI'I AKINA			X			
TRUSTEE LUANA ALAPA			X			
TRUSTEE BRENDON LEE			X			
TRUSTEE KEOLA LINDSEY		X	X			
TRUSTEE JOHN WAIHE'E			X			
CHAIRPERSON HULU LINDSEY			X			
TOTAL VOTE COUNT			9			
MOTION: [] UNANIMOUS [X] PASSED [] DEFERRED [] FAILED						
Motion passes with nine (9) YES votes and one (0) EXCUSED vote.						

IV. 3. B. OHA Federal Legislative Positioning – Matrix† - Advocacy (Washington, D.C. Bureau)

Trustee Akaka To approve Administration's recommendations on: OHA FED 14 through OHA FED 16 all as SUPPORT; on the OHA Federal Priorities for the 117th Congress – Federal Legislative Matrix

Trustee K. Lindsey Seconds the motion

Trustee Akaka moves						
To approve Administration's recommendations on: OHA FED 14 through OHA FED 16 all as SUPPORT; on the OHA Federal Priorities for the 117th Congress – Federal Legislative Matrix						
Trustee K. Lindsey Seconds the motion.						
	1	2	'AE (Yes)	'A'OLE (NO)	KANALUA (ABSTAIN)	EXCUSED
TRUSTEE LEI AHU ISA			X			
TRUSTEE DAN AHUNA			X			
TRUSTEE KALEI AKAKA	X		X			
TRUSTEE KELI'I AKINA			X			
TRUSTEE LUANA ALAPA			X			
TRUSTEE BRENDON LEE			X			
TRUSTEE KEOLA LINDSEY		X	X			
TRUSTEE JOHN WAIHE'E			X			
CHAIRPERSON HULU LINDSEY			X			
TOTAL VOTE COUNT			9			
MOTION: [] UNANIMOUS [X] PASSED [] DEFERRED [] FAILED						

Motion passes with nine (9) YES votes and one (0) EXCUSED vote.

IV. 4. A. Action Item RM #21-12☼: Approve an Additional Amount of \$13,000 in Emergency Relief Funds to be Distributed to Address the Impacts of Hawai'i Island Fires

Chair Hulu Lindsey Next item on the agenda, I will call on Trustee Waihe'e

Trustee Waihe'e Thank you Madam Chair.

Chair Lindsey,

Your Committee on Resource Management, having met on September 14, 2021, and after full and free discussion, recommends approval of the following Public Session actions to the Board of Trustees:

Motion 1

Approve an additional amount of \$13,000 in Emergency Relief for a total amount of \$83,000 in FY2022 Program 3800 – Grants, Object Code 56570 – Grants-In-Aid, Disaster Aid addressing the impacts of the recent Hawai'i Island Fires.

Trustee Ahuna Seconds the motion.

Trustee Waihe'e moves

Approve an additional amount of \$13,000 in Emergency Relief for a total amount of \$83,000 in FY2022 Program 3800 – Grants, Object Code 56570 – Grants-In-Aid, Disaster Aid addressing the impacts of the recent Hawai'i Island Fires.

Trustee Ahuna Seconds the motion.

	1	2	'AE (Yes)	'A'OLE (NO)	KANALUA (ABSTAIN)	EXCUSED
TRUSTEE LEI AHU ISA			X			
TRUSTEE DAN AHUNA		X	X			
TRUSTEE KALEI AKAKA			X			
TRUSTEE KELI'I AKINA			X			
TRUSTEE LUANA ALAPA			X			
TRUSTEE BRENDON LEE			X			
TRUSTEE KEOLA LINDSEY			X			
TRUSTEE JOHN WAIHE'E	X		X			
CHAIRPERSON HULU LINDSEY			X			
TOTAL VOTE COUNT			9			

MOTION: [] UNANIMOUS [X] PASSED [] DEFERRED [] FAILED

Motion passes with nine (9) YES votes and one (0) EXCUSED vote.

Trustee Waihee Madam Chair I move to

Action 2

Amend the Waimea Hawaiian Homesteaders' Association contract to reflect a total not to exceed amount of \$83,000 with the following details and related agreements:

1. Up to \$26,000 for distribution to families impacted by the Hawai'i Island fires - \$2,000 per impacted family, for a structure that was lost; otherwise, \$1,000 per impacted family (Impact Purpose #1), refer to Attachment A;
2. Up to \$50,000 for contracting for heavy equipment rental(s) and related operational costs (e.g., operator(s), fuel) to address the impacts of the Hawai'i Island fires (Impact Purpose #2), subject to expense reimbursement, based on 3rd party estimates, quotes, invoices and affirmation of service to the 23 impacted families detailed at Attachment A; and
3. Up to \$7,000 for administrative costs and fees, billed based on 10% of Impact Purposes #1 and #2 cash disbursements made.

Trustee Ahu Isa Seconds the motion.

Trustee Waihe'e moves

Amend the Waimea Hawaiian Homesteaders' Association contract to reflect a total not to exceed amount of \$83,000 with the following details and related agreements:

1. Up to \$26,000 for distribution to families impacted by the Hawai'i Island fires - \$2,000 per impacted family, for a structure that was lost; otherwise, \$1,000 per impacted family (Impact Purpose #1), refer to Attachment A;
2. Up to \$50,000 for contracting for heavy equipment rental(s) and related operational costs (e.g., operator(s), fuel) to address the impacts of the Hawai'i Island fires (Impact Purpose #2), subject to expense reimbursement, based on 3rd party estimates, quotes, invoices and affirmation of service to the 23 impacted families detailed at Attachment A; and
3. Up to \$7,000 for administrative costs and fees, billed based on 10% of Impact Purposes #1 and #2 cash disbursements made.

Trustee Ahu Isa Seconds the motion.

	1	2	'AE (Yes)	'A'OLE (NO)	KANALUA (ABSTAIN)	EXCUSED
TRUSTEE LEI AHU ISA		X	X			
TRUSTEE DAN AHUNA			X			
TRUSTEE KALEI AKAKA			X			
TRUSTEE KELI'I AKINA			X			
TRUSTEE LUANA ALAPA			X			
TRUSTEE BRENDON LEE			X			
TRUSTEE KEOLA LINDSEY			X			
TRUSTEE JOHN WAIHE'E	X		X			
CHAIRPERSON HULU LINDSEY			X			
TOTAL VOTE COUNT			9			
MOTION: [] UNANIMOUS [X] PASSED [] DEFERRED [] FAILED						
Motion passes with nine (9) YES votes and one (0) EXCUSED vote.						

Trustee Waihe'e Madam Chair I'd like to

Action 3

Approve a non-solicited COVID-19 \$20,000 grant to Papa Ola Lokahi from FY2022 Grants Program 3800, Community Grants Program, Object Code – 56530 – COVID-19 Impacts to enable immediate statewide vaccination site collaboration and implementation.

Trustee Akaka Seconds the motion.

Trustee Ahu Isa When I read this motion, it says impacts enable immediacy by vaccination site. So, that can include testing and the testing in our schools so important for our children. The testing is just as important as the vaccination. I am assuming Papa Ola Lokai is also involved. Trustee Lee, did they do testing when you went to Nānākuli?

Trustee Lee Yes, the site that I went to in Nānākuli two weeks ago, they were testing. I believe there was 175 individuals that were tested that day and 71 individuals that were vaccinated that day. The conversion rate was 7% so of the 175 people that go tested, 7% decided to get vaccinated after their test.

Trustee Ahu Isa Mahalo Brendon.

Chair Hulu Lindsey Great, thank you Trustee Lee for going there.

Trustee Waihe'e moves						
Approve a non-solicited COVID-19 \$20,000 grant to Papa Ola Lokahi from FY2022 Grants Program 3800, Community Grants Program, Object Code – 56530 – COVID-19 Impacts to enable immediate statewide vaccination site collaboration and implementation.						
Trustee Akaka Seconds the motion.						
	1	2	'AE (Yes)	'A'OLE (NO)	KANALUA (ABSTAIN)	EXCUSED
TRUSTEE LEI AHU ISA			X			
TRUSTEE DAN AHUNA			X			
TRUSTEE KALEI AKAKA		X	X			
TRUSTEE KELI'I AKINA			X			
TRUSTEE LUANA ALAPA			X			
TRUSTEE BRENDON LEE			X			
TRUSTEE KEOLA LINDSEY			X			
TRUSTEE JOHN WAIHE'E	X		X			
CHAIRPERSON HULU LINDSEY			X			
TOTAL VOTE COUNT			9			
MOTION: [] UNANIMOUS [X] PASSED [] DEFERRED [] FAILED						
Motion passes with nine (9) YES votes and one (0) EXCUSED vote.						

Chair Hulu Lindsey Moving on to item V., I will call on Trustee Keola Lindsey.

IV. 5. Action Item BOT #21-11: Accept and Implement the Recommendations in the OHA Ad Hoc Committee on the CliftonLarsonAllen (CLA) Report entitled “OHA & LLC’s Contract and Disbursement Review” Report. Pursuant to HRS§92-2.5(b)(1)(C).

Trustee K. Lindsey I move to Accept and Implement the Recommendations in the OHA Ad Hoc Committee on the CliftonLarsonAllen (CLA) Report entitled “OHA & LLC’s Contract and Disbursement Review” Report

Trustee Akina Seconds the motion.

Chair Hulu Lindsey Is there any discussion?

Trustee Akina I want to thank Trustee Lindsey and the committee for putting together such a fine report, and I look forward to our adoption of it. First question has to do with the timing, four months was allotted for the completion of the contract. Was the committee open to or discuss possibly a longer period of time if the contractor felt that was necessary?

Trustee K. Lindsey I think the committee viewed that as the initial timeline and like any contract, if the need arises for an extension then, we’ll go through the process.

Trustee Akina Thank you. My second question has to do with the cost, \$200K was allocated by the legislature. Did the committee have any thought or discussion as to whether OHA might consider increasing the amount or inviting some type of mechanism if the contractor indicated that was necessary?

Trustee K. Lindsey \$200K is allotted by the legislature. The committee did discuss the possibility some of it is more procedural once we start getting responses. If more money is needed to meet the need, then we’ll go through our required process to see if that’s possible.

Trustee Akina Thank you, I’m glad to hear that. I appreciate the statement that the committee has written which is as follows: The purpose of the RFP is to hire a professional services firm to determine each of the 38 red flag issues, whether caused to a reasonable certainty exists to believe that fraud, waste or abuse or some combination of each of these three classifications exists. I appreciate that statement and I believe it conveys the spirit of what we intended from the beginning from the CLA audit. I commend the work of the committee. Thank you very much.

Trustee Ahu Isa There was a definition of the auditing but I forgot what they called it. I think it is the accounting standards. The word forensic is what I was trying to look at because when you look at the definition in Webster, it is a criminal thing but when I read the accounting standards it says only an investigation of to find out. They are not there auditing to look for criminal things. So, I think the \$200K will be sufficient. OHA is not in the business to go digging around and adding more than \$200K, in my humble opinion. Also, Trustee Akina, for your information when executive session met yesterday to approve the minutes, I delayed it because your name is in that

Chair Hulu Lindsey That is not on our agenda today. You talk to him personally. Okay, I am going to call for the roll call vote for this item.

Trustee K. Lindsey I’d like to thank the fellow committee members for their work on this. I think we engage in full discussion, we worked through things that came up and I think the report and the recommendation of our

product, from all four of us and the support staff we have working together, to achieve the task that's received. Thank you, Madam Chair.

Chair Hulu Lindsey And thank you and Trustee Alapa's service along with Colin and Casey, we really appreciate the work that you went through and so fast, mahalo. Okay, roll call vote.

Trustee K. Lindsey moves						
Accept and Implement the Recommendations in the OHA Ad Hoc Committee on the CliftonLarsonAllen (CLA) Report entitled "OHA & LLC's Contract and Disbursement Review" Report						
Trustee Akina Seconds the motion.						
	1	2	'AE (Yes)	'A'OLE (NO)	KANALUA (ABSTAIN)	EXCUSED
TRUSTEE LEI AHU ISA			X			
TRUSTEE DAN AHUNA			X			
TRUSTEE KALEI AKAKA			X			
TRUSTEE KELI'I AKINA		X	X			
TRUSTEE LUANA ALAPA			X			
TRUSTEE BRENDON LEE			X			
TRUSTEE KEOLA LINDSEY	X		X			
TRUSTEE JOHN WAIHE'E			X			
CHAIRPERSON HULU LINDSEY			X			
TOTAL VOTE COUNT			9			
MOTION: [] UNANIMOUS [X] PASSED [] DEFERRED [] FAILED						
Motion passes with nine (9) YES votes and one (0) EXCUSED vote.						

Chair Hulu Lindsey I'll entertain a motion to recuse ourselves into executive session. Once we are done in executive session, we will come back into open session.

Executive Session

Action Item RM#21-14☼: Commercial Property Acquisition of 500 N. Nimitz Highway and 501 Sumner Street: Consultation with Board Counsel Robert G. Klein and Everett Ohta, OHA Assistant Senior Legal Counsel, re: questions and issues pertaining to the Board's powers, Duties, privileges, immunities, and liabilities with respect to the acquisition of certain commercial Property, pursuant to HRS§ 92-5(a)(4); Deliberations on the authority of persons designated by the Board to conduct negotiations related to the acquisition of public property, pursuant to HRS§ 92-5(a)(3)

Trustee Ahu Isa Moves to recuse into Executive Session.

Trustee Waihe'e Seconds the motion.

The Board recuses into Executive Session at 12:03 p.m.

Motion to recuse into executive session pursuant to HRS Section 92-5						
	1	2	'AE (YES)	'A'OLE (NO)	KANALUA (ABSTAIN)	EXCUSED
TRUSTEE LEI AHU ISA	X		X			
TRUSTEE DAN AHUNA			X			
TRUSTEE KALEI AKAKA			X			
TRUSTEE KELI'I AKINA			X			
TRUSTEE LUANA ALAPA			X			
TRUSTEE BRENDON LEE			X			
TRUSTEE KEOLA LINDSEY			X			
TRUSTEE JOHN WAIHE'E		X	X			
CHAIRPERSON HULU LINDSEY			X			
TOTAL VOTE COUNT			9			
MOTION: <input type="checkbox"/> UNANIMOUS <input checked="" type="checkbox"/> PASSED <input type="checkbox"/> DEFERRED <input type="checkbox"/> FAILED						
Motion passes with nine (9) YES votes and one (1) EXCUSED vote.						

The Board returns to open session at 12: 30 p.m

Adjournment

Chair Hulu Lindsey I would like to ask for a motion to adjourn.

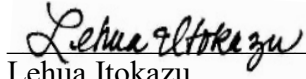
Trustee Ahu Isa Moves to adjourn.

Trustee Akaka Seconds the motion

Adjournment							
TRUSTEE		1	2	'AE (YES)	A'OLE (NO)	KANALUA (ABSTAIN)	EXCUSED
LEINA'ALA	AHU ISA	X		X			
DAN	AHUNA			X			
KALEIHIKINA	AKAKA		X	X			
KELI'I	AKINA			X			
LUANA	ALAPA			X			
BRENDON KALEI'ĀINA	LEE			X			
KEOLA	LINDSEY			X			
JOHN	WAIHE'E			X			
CHAIR CARMEN HULU	LINDSEY			X			
TOTAL VOTE COUNT				9			

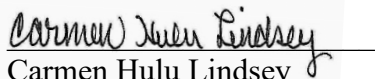
Chairperson Carmen Hulu Lindsey adjourns the Board of Trustees meeting at 12:33 pm.

Respectfully submitted,



Lehua Itokazu
Board Secretary

As approved by the Board of Trustees on December 9, 2021.



Carmen Hulu Lindsey
Chairperson, Board of Trustees

Attachments:

1. Testimony – Germaine Meyers
2. Hawai‘i Island Report – Hawai‘i Executive Summary
3. DLNR-Hilo Preservation Center Project – PowerPoint
4. Papa Ola Lokahi – COVID-19 Response PowerPoint
5. Action Item BOT #21-11: Accept and Implement the Recommendations in the OHA Ad Hoc Committee on the CliftonLarsonAllen (CLA) Report entitled “OHA & LLC’s Contract and Disbursement Review” Report

Public Testimony and Community Concerns of Germaine Meyers, BOT meeting Thursday, September 16, 2021 at 10 am

Aloha Chair Hulu, Ka Pouhana and Lahui,

My name is Germaine Meyers. I'm an OHA beneficiary for beneficiary advocacy and empowerment. I'm also a Nanakuli Hawaiian Homestead Lessee.

Thank you for the opportunity to share my data, views and arguments regarding today's agenda, roman numeral 4, item 5, regarding Action Item BOT #21-11: **Accept and Implement the Recommendations** in the OHA Ad Hoc Committee on the CLA Report entitled "OHA & LLCs Contract and Disbursement Review" Report.

My sincerest mahalo again to Ad Hoc Committee Chair Trustee Keola Lindsey and Trustee Luana Alapa, BOT Chief of Staff Colin Kippen, and OHA Chief Operating Officer Casey Brown.

Trustees, I humbly ask you to support the (4) recommendations of the Ad Hoc Committee.

I sincerely believe your actions will truly show the Lahui, whether OHA's defined Purpose and Strategic Plan were created to support and protect the Lahui (all Hawaiians) or support and protect a Hui (a small special group of Hawaiians).

I also believe Trustee Brendon Lee continues to undisclosed at all OHA Board meetings, regarding the CLA Report, his conflict of interest in at least one of the CLA flagged test items.

On Trustee Brendon Kalei'aina Lee's personal website, kaleiainalee.com, which is titled Brendon Kaleiaina Lee, OHA At-Large, under the tab "About Us", Trustee Lee discloses the following:

Trustee Brendon Kalei'aina Lee was elected to the Office of Hawaiian Affairs in 2018.

In 2016, Trustee Lee was elected as the chairman of the 2016 Aha: Native Hawaiian Governance Convention. Under his leadership, a diverse group of 120 **participants** worked together to find the common ground necessary to draft and adopt a Constitution with a vote of 88 in favor, 30 against, and 1 abstention.

Trustee Lee clearly admits these were **'Aha participants**, and not delegates, which were outlined in the Scope of Services as the deliverables.

When Brendon Lee accepted the chairmanship of the 2016 Aha, **he didn't do his due diligence**. Had he read all of the documents provided to the public on the Na'i Aupuni website, he would have read the OHA grant agreement, letter of agreement, etc., and form the same conclusions as I did, and as CLA also concluded in their report.

The Office of Hawaiian Affairs **DID NOT** give Akamai Foundation and Na'i Aupuni a **Discretionary Grant** to spend OHA's trust funds (aka Discretionary powers).

Yes, the grant agreement included #3 Na'i Aupuni's Autonomy and #4 Na'i Aupuni Commitment Not to Affect the Delegates' Political Decision. However, the terms of #3 and #4 **DID NOT CHANGE the Scope of Services**. Nothing on the Grant Agreement or Letter of

Agreement does it give Na'i Aupuni and Akamai Foundation the power to change elected delegates into non-elected participants.

The CLA flag test item categorized as a contract, type grant, CLA Sample #K-57, OHA Contract #3026, for the period of May 4, 2015 through August 3, 2016, to Akamai Foundation on behalf of Na'i Aupuni for \$2,598,000. Again \$2,598,000 dollars.

I noted on today's agenda OHA is proposing to approve a \$20,000 grant to Papa Ola Lokahi to enable immediate statewide vaccination site collaboration and implementation. In addition, today's agenda is proposing to approve an additional amount of \$13,000 in Emergency Relief Funds to be distributed to address the impacts of Hawaii Island Fires. **Clearly \$20,000 and \$13,000 is far less OHA funds than the \$2,598,000 used for 120 participants of the 2016 'Aha, a governance convention of participants, not elected delegates.**

Summarized CLA Observations:

Contract Purpose: To facilitate election of delegates, election and referendum monitoring, a governance 'Aha, and a referendum to ratify any recommendation of the delegates arising out of the 'Aha.

Observations:

- 1) Potential conflict of interest between Native Hawaiian Roll Commission Executive Director and his wife, who was a board member of Na'i Aupuni. No disclosure in the grant file of potential conflict of interest.
- 2) Appearance of abuse of OHA's disbursement process.

- 3) Because all funds were disbursed and the election was canceled, the intended results of the grant were not recognized, which is an indication of waste of funds.

Trustees, I have all of these documents. It's public record.

The question is, were the Scope of Services fulfilled, as outlined in the Grant Agreement, and defined also in a separate Letter Agreement, which included how funds would be disbursed. Upon reading the Letter Agreement, it speaks to Akamai Foundation and Na'i Aupuni must perform the Scope of Services outlined in the Grant Agreement.

What is the Scope of Services outlined in the \$2,598,000 grant agreement?

Scope of Services. Akamai Foundation will direct the use of the grant to Nai Aupuni so it may facilitate an election of delegates, election and referendum monitoring, a governance 'Aha, and a referendum to ratify any recommendation of the delegates arising out of the 'Aha ("Scope of Services"). The scope of services represents the internal affairs of the Hawaiian community and thus will not exclude those Hawaiians who have enrolled and have been verified by the Native Hawaiian Roll Commission.

Clearly all of the (3) Scope of Services were Undelivered.

- 1) Facilitate an election of delegates. Undelivered.
- 2) Election and referendum monitoring. Undelivered.
- 3) A governance 'Aha and a referendum to ratify any recommendation of the delegates arising out of the 'Aha. Undelivered.

Ke Akua Pu,

God bless all of you.

Bcc: Beneficiaries on my bcc list

BELOW FROM WWW.KALEIAINALEE.COM



ABOUT ME

Trustee Brendon Kalei'aina Lee was elected to the Office of Hawaiian Affairs in 2018.

Born and raised in Pearl City O'ahu, he is the son of Benson and Toni Lee; both of whom are past presidents of the Association of Hawaiian Civic Clubs. Trustee Lee is a 1987 graduate of the Kamehameha Schools.

As a child, Trustee Lee spent his summers on Moloka'i at his grandparent's home in Ho'olehna. It was there where he was exposed to the issues of Native Hawaiian self-determination by his grandmother, Mary Lee; one of the kupuna founders of the Protect Kaho'olawe 'Ohana (PKO).



Trustee Lee with his wife, Kimberly

As a life-long member of the Pearl Harbor Hawaiian Civic Club, he has been engaged in Hawaiian issues for most of his life. In 2016, Trustee Lee was elected as the chairman of the 2016 Aha: Native Hawaiian Governance Convention. Under his leadership, a diverse group of 120 participants worked together to find the common ground necessary to draft and adopt a Constitution with a vote of 88 in favor, 30 against, and 1 abstention.

BELOW FROM CLA REPORT

4	Contract	Grants	K-57	3026	Akamai Foundation on behalf of Na'i Aupuni	\$ 2,598,000.00	73	Contract monitor no longer	Contract Purpose: To facilitate election of delegates; election and referendum monitoring; a governance	
---	----------	--------	------	------	--	-----------------	----	----------------------------	---	--

#	Category	Type	CLA Sample #	OHA Contract # / Check #	Vendor/Contractor/Grantee	Contract Amount with Amendments	Report Page	Contract Monitor	Contract Purpose Summarized CLA Observations	Notes
				(05/04/2015-08/03/2016)				employed by OHA and was not interviewed by CLA	'Aha, and a referendum to ratify any recommendation of the delegates arising out of the 'Aha Observations: <ul style="list-style-type: none"> Potential conflict of interest between Native Hawaiian Roll Commission Executive Director and his wife, who was a board member of Na'i Aupuni. No disclosure in the grant file of potential conflict of interest Appearance of abuse of OHA's disbursement process Because all funds were disbursed and the election was canceled, the intended results of the grant were not recognized, which is an indication of waste of funds	

BELOW FROM NA'I AUPUNI WEBSITE

NA'I AUPUNI			ABOUT • 'AHA KEY DOCUMENTS CONTACT		
Latest News			Act 195, HRS 10H and Act 77		Contracts and Agreements
	Na'i Aupuni Decides Not To Pursue Ratification Vote	March 16, 2016 News Release		Act 195	 Agreement Between Election-America, Inc. and Na'i Aupuni
	Na'i Aupuni Announces Participant Total For February 'Aha Is 154	January 6, 2016 News Release		HRS Sections 10H	 Fiscal Sponsorship Agreement Between Akamai Foundation and Na'i Aupuni
	Na'i Aupuni Releases List Of 152 Participants To February 'Aha	December 23, 2015 News Release		Act 77	 Grant Agreement Between The Akamai Foundation and The Office of Hawaiian Affairs for the Use and Benefit of Na'i Aupuni
	Na'i Aupuni Statement On Grassroot Civil Contempt Filing	December 22, 2015 News Release	Roll Commission Documents		 Letter Agreement Between Office of Hawaiian Affairs, Na'i Aupuni, and Akamai Foundation
	Na'i Aupuni Terminates Election Process	December 15, 2015 News Release		Native Hawaiian Roll Commission Documents	
	Na'i Aupuni Extends Voting Deadline By Three Weeks	November 30, 2015 News Release	Other		
				Na'i Aupuni Bylaws	
				Election-America Notice	
				Ho'olaha Koho Pāloka	
				Grassroot Institute of Hawaii Complaint	
				Order Denying Plaintiffs' Motion for Preliminary Injunction	

BELOW FROM GRANT AGREEMENT BETWEEN THE AKAMAI FOUNDATION AND THE OFFICE OF HAWAIIAN AFFAIRS FOR THE USE AND BENEFIT OF NA'I AUPUNI

1. **Scope of Services.** AF will direct the use of the grant to NA so it may facilitate an election of delegates, election and referendum monitoring, a governance 'Aha, and a referendum to ratify any recommendation of the delegates arising out of the 'Aha ("Scope of Services"). The scope of services represents the internal affairs of the Hawaiian community and thus will not exclude those Hawaiians who have enrolled and have been verified by the Native Hawaiian Roll Commission.

2. **Funds.** OHA will periodically transfer to AF a total of TWO MILLION FIVE HUNDRED NINETY-EIGHT THOUSAND and NO/DOLLARS (\$2,598,000.00), inclusive of all taxes and fees, in tranches defined in a separate Letter Agreement, which is incorporated by reference herein, with AF for NA to perform the Scope of Services.

3. **Na'i Aupuni's Autonomy.** As set forth in the separate Fiscal Sponsorship Agreement, OHA hereby agrees that neither OHA nor AF will directly or indirectly control or affect the decisions of NA in the performance of the Scope of Services, and OHA agrees that NA has no obligation to consult with OHA or AF on its decisions regarding the performance of the Scope of Services. NA hereby agrees that the decisions of NA and its directors, paid consultants, vendors, election monitors, contractors, and attorneys regarding the performance of the Scope of Services will not be directly or indirectly controlled or affected by OHA.

4. **Na'i Aupuni Commitment Not to Affect the Delegates' Political Decisions.** NA hereby agrees:

(a) that the decisions of NA and its directors, paid consultants, attorneys and vendors regarding the performance of the Scope of Services will not directly or indirectly control or purposefully affect the political decisions of the delegates at the 'Aha; and

(b) NA and its directors, paid consultants, attorneys, and all of its vendors are barred from serving as Aha delegates. NA also commits that its performance of the Scope of Services will not interfere with the right to self-determination such that the 'Aha delegates may freely determine their political status.

5. **Project Time Table.** NA commits to completing the Scope of Services within 15 months following the date this Agreement is executed, including the election of delegates projected to occur at about November 2015.

**BELOW FROM LETTER OF AGREEMENT BETWEEN OFFICE OF
HAWAIIAN AFFAIRS, NA'I AUPUNI AND AKAMAI FOUNDATION**

2. Upon execution of the Grant Agreement, **TWO HUNDRED FIFTY THOUSAND AND NO/100 DOLLARS (\$250,000)**("initial payment") shall be provided to AF, the Sponsor, within five (5) business days.

3. All subsequent payments have been authorized by OHA's Chief Executive Officer and funding shall be made available upon the request of the AF, the Sponsor, based upon the following Schedule of Disbursements:

- A. Item number 2. above (\$250,000).
- B. Per Na'i Aupuni's Projected Budget (3/9/2015) for Apportionment and Election Contract, plus the Independent Election Monitoring Contract (\$276,250), plus first tranche of funding for any attorneys fees, any other consultants or if any budget category needs additional funding (\$159,137.33).
- C. Per Na'i Aupuni's Projected Budget for the Governance 'Aha Contract (\$1,457,088), plus second tranche of funding for any attorneys fees, any other consultants or if any budget category needs additional funding (\$159,137.33).
- D. Per Na'i Aupuni's Projected Budget for the Referendum Contract and Independent Referendum Monitoring Contract (\$137,250), plus third tranche of funding for any attorneys fees, any other consultants or if any

budget category needs additional funding (\$159,137.33).

At any point in time, OHA's Chief Executive Officer has the right to object to a requested disbursement on the grounds that such disbursement is inconsistent with the Grant Agreement and/or the Fiscal Sponsorship Agreement.

3. It is mutually agreed that the terms of this Letter Agreement are hereby incorporated into the Grant Agreement by reference.

4. Should any of the terms of this Letter Agreement conflict with the Grant Agreement or the Fiscal Sponsorship Agreement, the terms of the Grant Agreement and the Fiscal Sponsorship Agreement will prevail.

5. The terms of this Letter Agreement may not be changed except by mutual agreement and by a writing signed by the parties.

6. Each party signing this Letter Agreement represents to each other that they are authorized by their respective organizations to execute this agreement and to be bound by the terms thereof.

NOW, THEREFORE, the parties hereto mutually agree as follows:

1. **Scope of Services.** AF will direct the use of the grant to NA so it may facilitate an election of delegates, election and referendum monitoring, a governance 'Aha, and a referendum to ratify any recommendation of the delegates arising out of the 'Aha ("Scope of Services"). The scope of services represents the internal affairs of the Hawaiian community and thus will not exclude those Hawaiians who have enrolled and have been verified by the Native Hawaiian Roll Commission.

2. **Funds.** OHA will periodically transfer to AF a total of TWO MILLION FIVE HUNDRED NINETY-EIGHT THOUSAND and NO/DOLLARS (\$2,598,000.00), inclusive of all taxes and fees, in tranches defined in a separate Letter Agreement, which is incorporated by reference herein, with AF for NA to perform the Scope of Services.

3. **Na'i Aupuni's Autonomy.** As set forth in the separate Fiscal Sponsorship Agreement, OHA hereby agrees that neither OHA nor AF will directly or indirectly control or affect the decisions of NA in the performance of the Scope of Services, and OHA agrees that NA has no obligation to consult with OHA or AF on its decisions regarding the performance of the Scope of Services. NA hereby agrees that the decisions of NA and its directors, paid consultants, vendors, election monitors, contractors, and attorneys regarding the performance of the Scope of Services will not be directly or indirectly controlled or affected by OHA.

Island Community Report: Hawai‘i Island

Executive Summary



Current Native Hawaiian Conditions on Hawai‘i Island



Educational Pathways Data

- 35.1% of Hawai‘i DOE students are Native Hawaiian (8,476/24,155) and 74% of Hawai‘i Hawaiian Focused Charter School students are Native Hawaiian (1,316).



Health Outcomes Data

- COVID-19 vaccines administered as of 08/30/21: 249,094 vaccines. 71% of Hawai‘i County residents received at least one (1) dose (141,702) and 59% received two (2) doses 117,853).
- 25% of those vaccinated Hawai‘i residents (who received at least one (1) dose) are Native Hawaiian or Pacific Islander (NHPI), compared to 33% of the total Hawai‘i County resident population.



Quality Housing Data

- In 2019, there were 67,054 total (all race/ethnicity) households in the Hawai‘i County. 67% of these total households were owned, 30% rented, and 2% classified as other
- 15,121 Native Hawaiians are listed on the DHHL Hawai‘i Island Wait List for Residential, Agricultural, and Pastoral lots.



Economic Stability Data

- In 2015, Native Hawaiian median household income in Hawai‘i County was \$51,675 or 99% of the countywide median family income (\$52,108).
- In 2015, Native Hawaiian median family income in Hawai‘i County was \$55,320, or 90% of the countywide median family income (\$61,268).

Current Issues on Hawai‘i Island

Hawai‘i Island Fires: Beneficiaries in the Pu‘ukapu Homestead, Waiki‘i Ranch, Kamuela, and Waikoloa communities continue to recover after the largest wildfire the island has ever experienced. (See Full Report, page 12)

Community-Based Subsistence Fishing Area – Miloli‘i: Pa‘a Pono Miloli‘i submitted a letter of inquiry to the State Division of Aquatic Resources (DAR) to designate the area from Kipahoe to Kaunā a Community-Based Subsistence Fishing Area (CBSFA) and is preparing to submit its proposal to the Department of Land and Natural Resources (DLNR) in the next month. (See Full Report, page 11)

Maunakea Working Group and Access Road: The Mauna Kea Working Group continues to develop recommendations for a new governance and management structure for Mauna Kea that collaboratively engages with all stakeholders, particularly the Native Hawaiian community. HCR76 SD2 establishes an additional working group to address outstanding issues related to the implementation Act 14 and uncompensated and inappropriate use of DHHL lands by the state. (See Full Report, page 13 & 14).

Pololū Valley: The Kohala Hawaiian Civic Club informed OHA of an application that was submitted for a 13-lot subdivision, parking lot, and comfort station along the ridge at Pololū Valley, and refuted DLNR’s assertion of community consultation. (See Full Report, page 11)

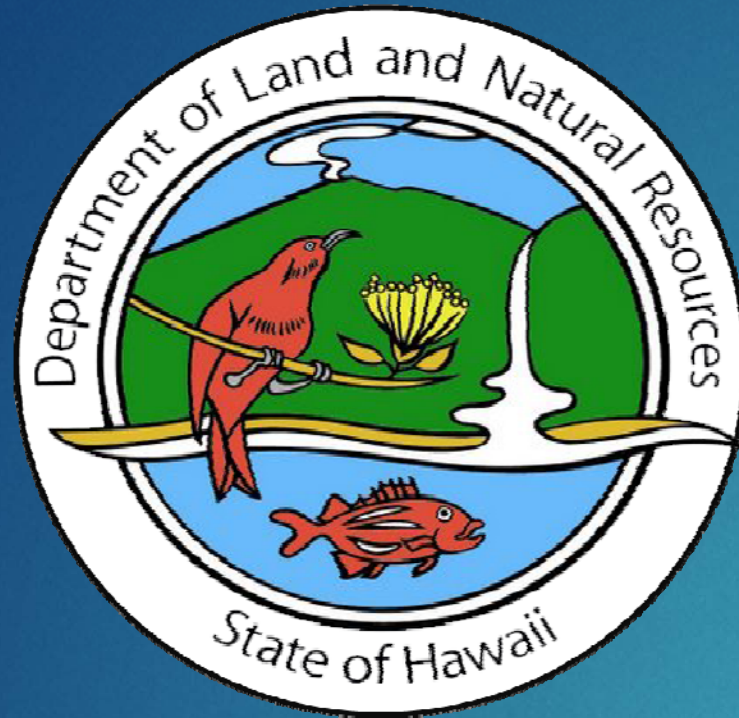
OTA Well – Water Credits: Aha Moku leaders are concerned the Natural Energy Laboratory of Hawai‘i Authority is requesting to dig a well above Lanihau Center in Kona, and propose that the Hawai‘i Department of Water Supply (DWS) issue credits for traditional practices and emerging industries. (See Full Report, page 12)

Current Grantees Serving Hawai‘i Island

Educational Services Hawaii Foundation • Hui Mālama Ola Na ‘Ōiwi • Edith Kanakaole Foundation • The Kohala Center, Inc. • Hui Mālama i ke Ala Ulili • Paa Pono Miloli‘i • Pacific American Foundation (Statewide) • Bishop Museum (Statewide) • Na Maka Onaona • Ho‘oulu Lahui • Papahana Aloha ‘Āina Hawai‘i • O Maku‘u ke Kahua Community Center • Hawai‘i Community Foundation • Pohaha i ka Lani • Moanalua Gardens Foundation • The Hawaiian Church of Hawai‘i Nei • Five Mountains Hawaii dba Kipuka o ke Ola • Big Island Substance Abuse Council • Ho‘okako‘o Corporation • Hawaiian Community Assets • Council for Native Hawaiian Advancement • Hawai‘i Community Lending • Hamakua Youth Foundation • KUPU

Current Hawai‘i Island Lending

102 active Native Hawaiian Revolving Loan Fund/ Consumer Micro Loan Program loans; \$855,496 total dollar amount



PRESENTED BY:



State of Hawaii, Department of Land and Natural Resources – East Hawaii Historic Preservation Center (at UHH Campus)

**INFORMATIONAL MEETING WITH THE OFFICE OF HAWAIIAN
AFFAIRS LEADERSHIP TEAM**

9/10/21

AGENDA

1. Basis for the Project.
2. Aerial and Topo Maps.
3. Convergence of the DLNR EHHPC, 'Imiloa and Hale 'Olelo .
4. Project Status.
5. Review the Existing DLNR SHPD Facility Conditions in Hilo.
6. Waiholu "Ripple" Concept and Explanation.
7. Concept Section and Diagram Supporting the Concept and a Picture Example.
8. Site Plan Development.
9. 3D Rendering.
10. Summary of the Area Program.
11. What's Next?

BASIS FOR THE PROJECT

The Problem:

1. The DLNR does not have a central location to store artifacts.
2. Artifacts are located in several locations around the island and State.
3. The artifacts are not properly inventoried or stored in climate controlled environments.
4. Degradation of the artifacts over time.

The Solution:

1. Bishop Museum to Archive materials? The DLNR recently inquired with the Bishop Museum to see if they would accept new materials for archiving. The Museum indicated that their existing storage needs exceed their capacity and will not accept new artifacts.
2. DLNR to archive the artifacts. Thus, the East Hawaii Historic Preservation Center.

Benefits:

1. Preservation of artifacts in perpetuity in climate controlled environments.
2. Proper curation and centralized storage of materials.
3. Creation of a database that will document the stored materials and organize their locations.
4. Opportunities for educational programs at the UHH to partner with the DLNR in the curation and archiving of artifacts.

AERIAL MAP

IMILOA
ASTRONOMY
CENTER

UH COLLEGE
OF PHARMACY

HALE 'OLELO

UNIVERSITY OF
HAWAI'I AT HILO

US PACIFIC BASIN
AGRICULTURAL
RESEARCH
CENTER

TMK: 3-2-4-001:041

PROJECT
LOCATION

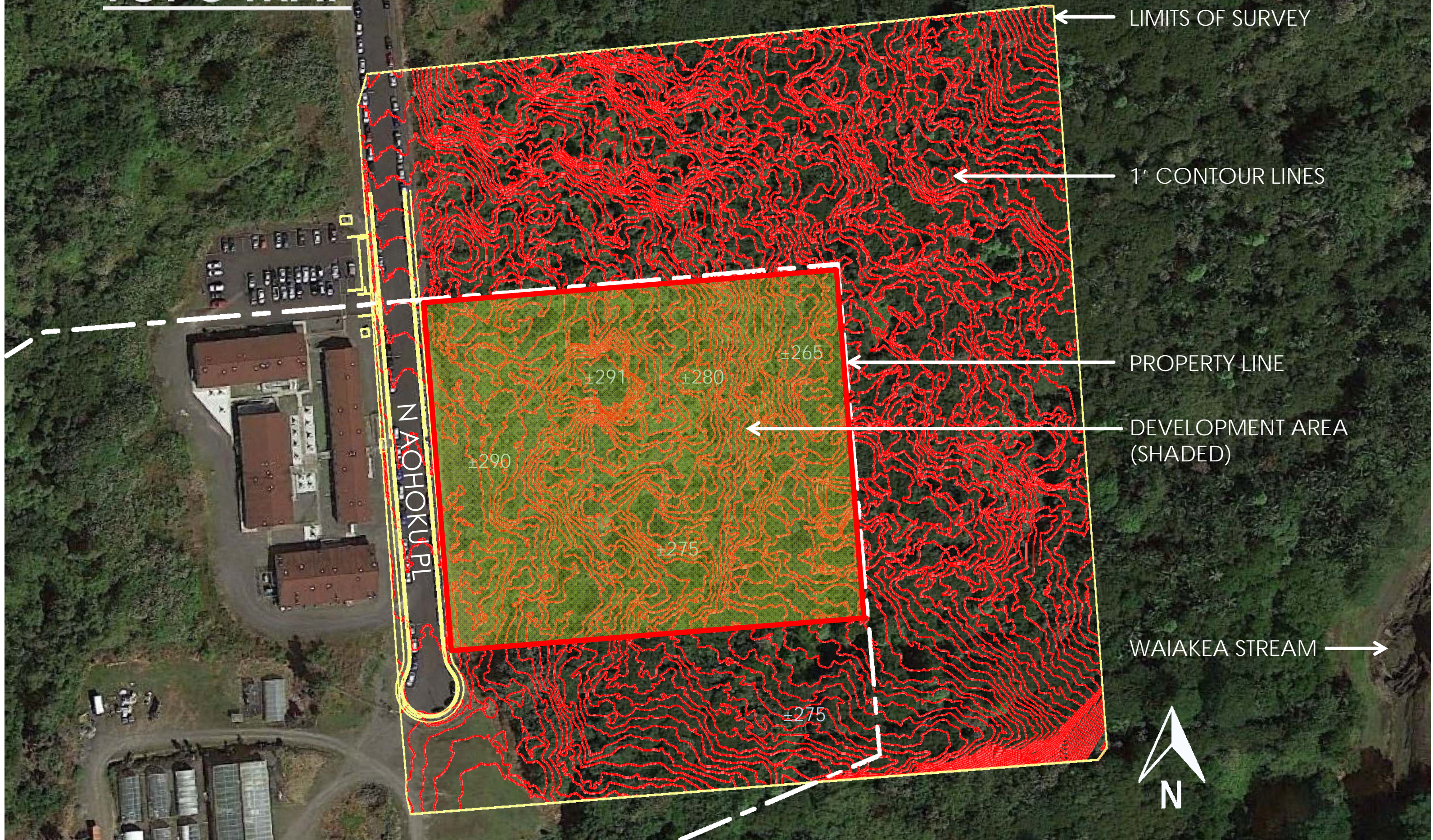
EASEMENT

KOMOHANA RESEARCH
& EXTENSION CENTER

ADULT STUDENT
HOUSING



TOPO MAP



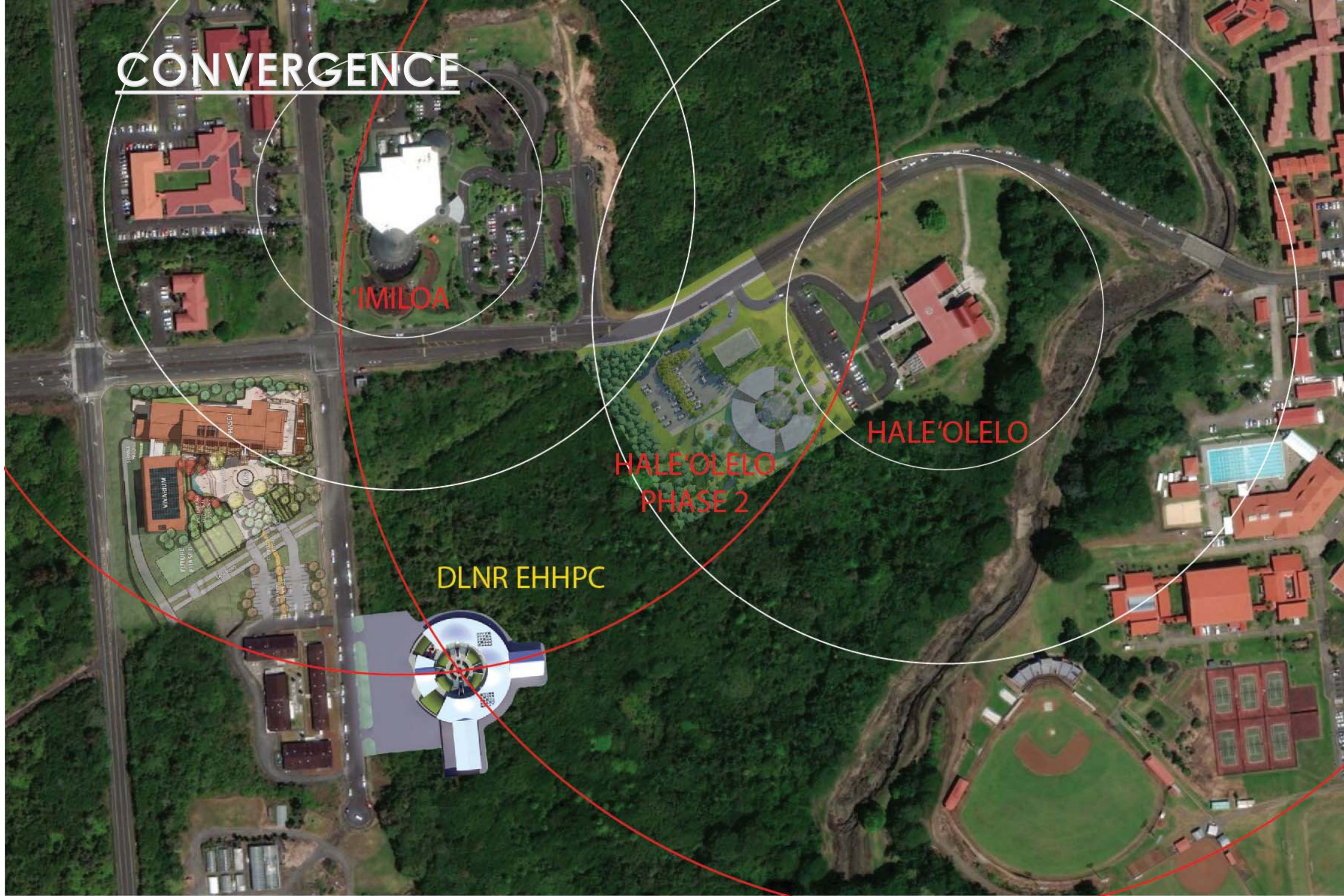
CONVERGENCE

'IMILOA

HALE'OLELO

HALE'OLELO
PHASE 2

DLNR EHHPC



PROJECT STATUS

PLANNING PHASE	DESCRIPTION	STATUS
PHASE 1	DUE DILIGENCE & INITIAL PROGRAMMING	COMPLETE*
PHASE 2	FINAL PROGRAMMING & CONCEPTUAL DESIGN	COMPLETE
PHASE 3A	INTERNAL DRAFT ENVIRONMENTAL ASSESSMENT	90% COMPLETE
PHASE 3B	FINAL ENVIRONMENTAL ASSESSMENT (INCLUDES DEA, FEA, ROE/GEOTECH SURVEY & ADVANCED CONCEPTUAL DESIGN)	INCOMPLETE – STARTING SOON

STUDIES/SURVEYS THAT HAVE BEEN COMPLETED TO DATE:

1. Topographic Survey.
2. Traffic Impact Assessment Report.
3. Archaeological Field Inspection Report.
4. Cultural Impact Assessment.
5. Flora/Fauna Survey.
6. Pre-Consultation Assessment Letter.

INCOMPLETE STUDIES/SURVEYS:

1. Geotechnical Foundation Investigation & Percolation.

OTHER:

1. Design Phase Right of Entry Agreement.
2. Lease or Sub-Lease between the DLNR & UHH/CTAHR.



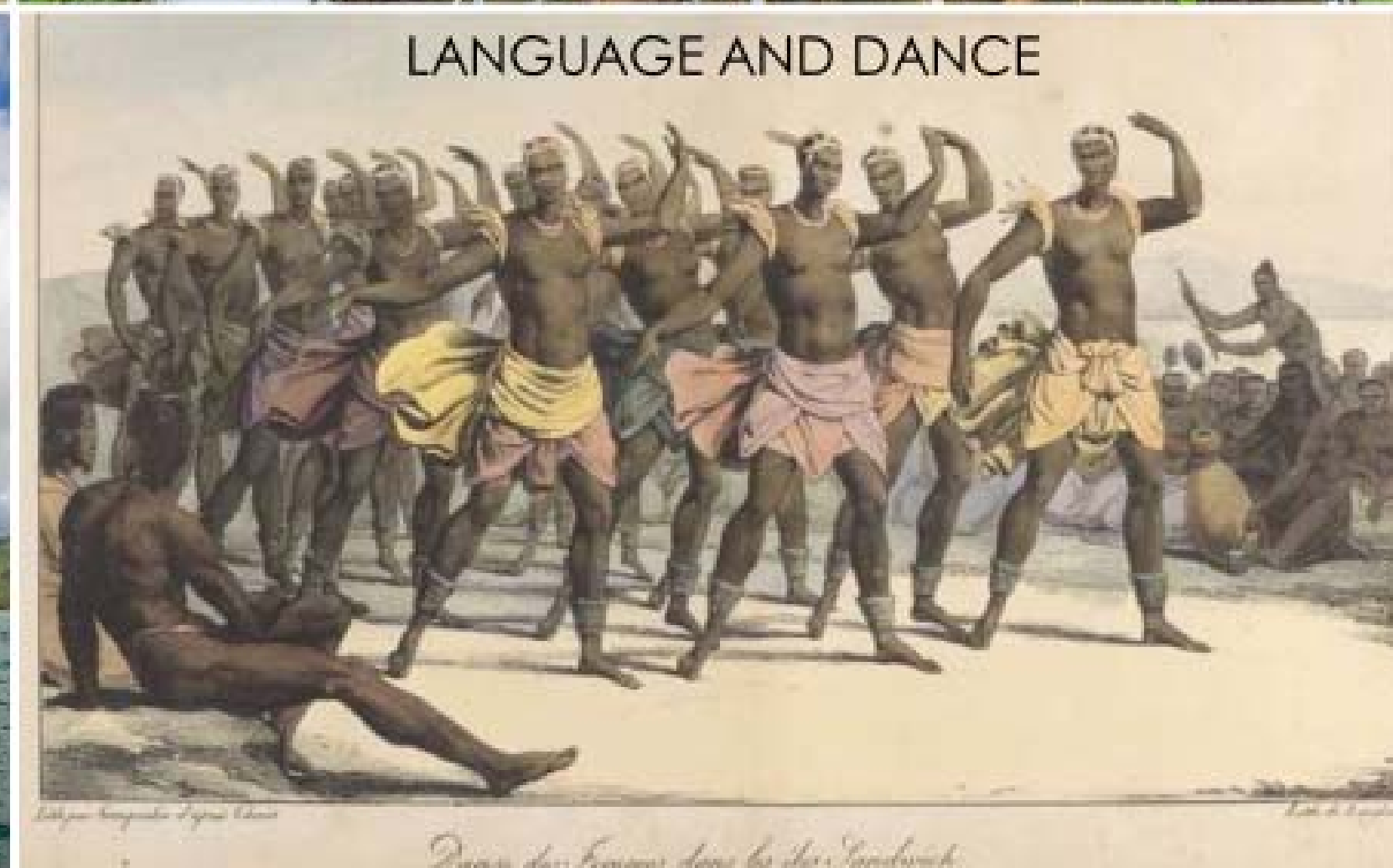
EARLY HAWAIIAN PEOPLE BUILT A VIBRANT AND
THRIVING CULTURE THAT DEVELOPED...



FARMING PRACTICES



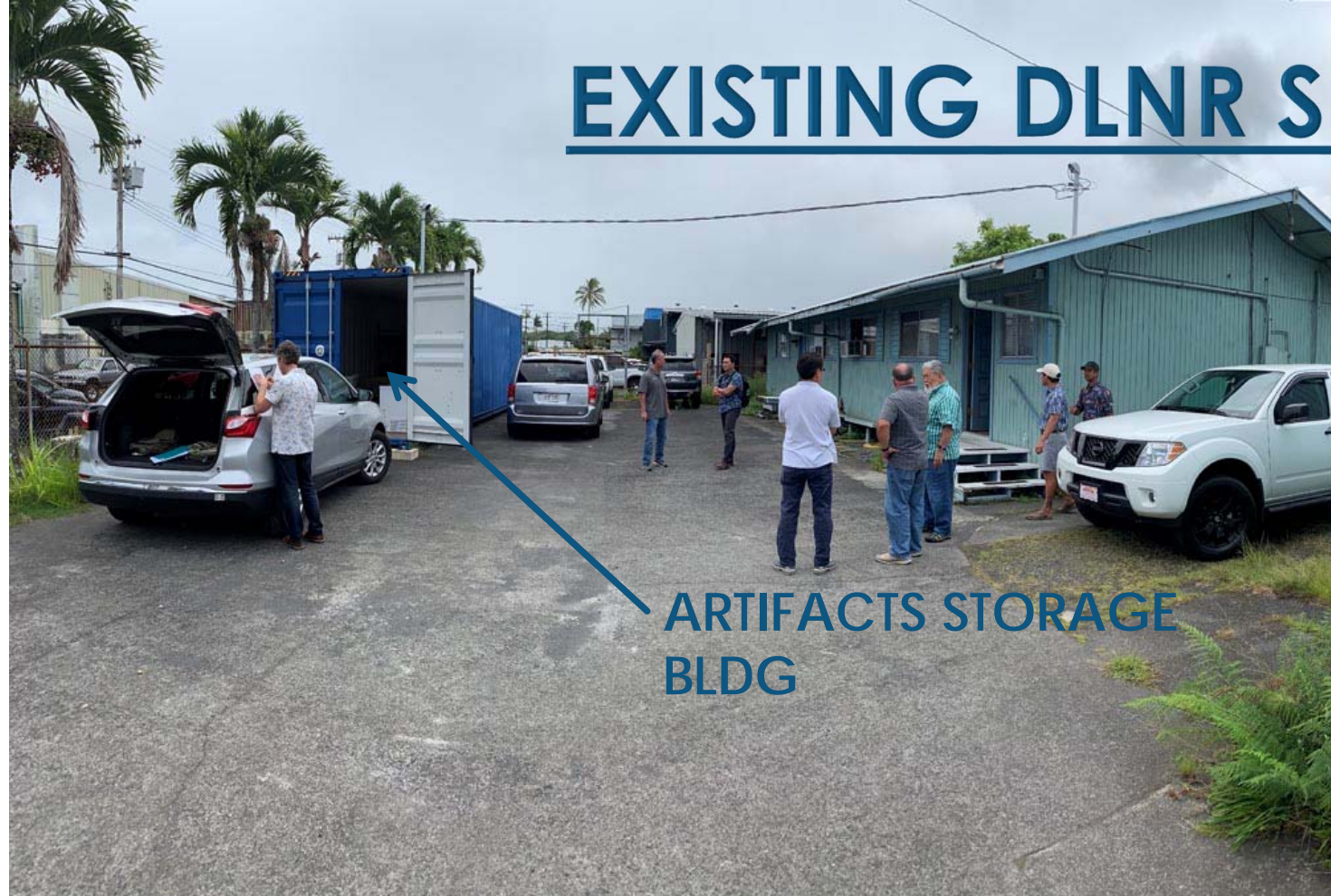
AND TRADITIONS THAT CONTINUE TODAY



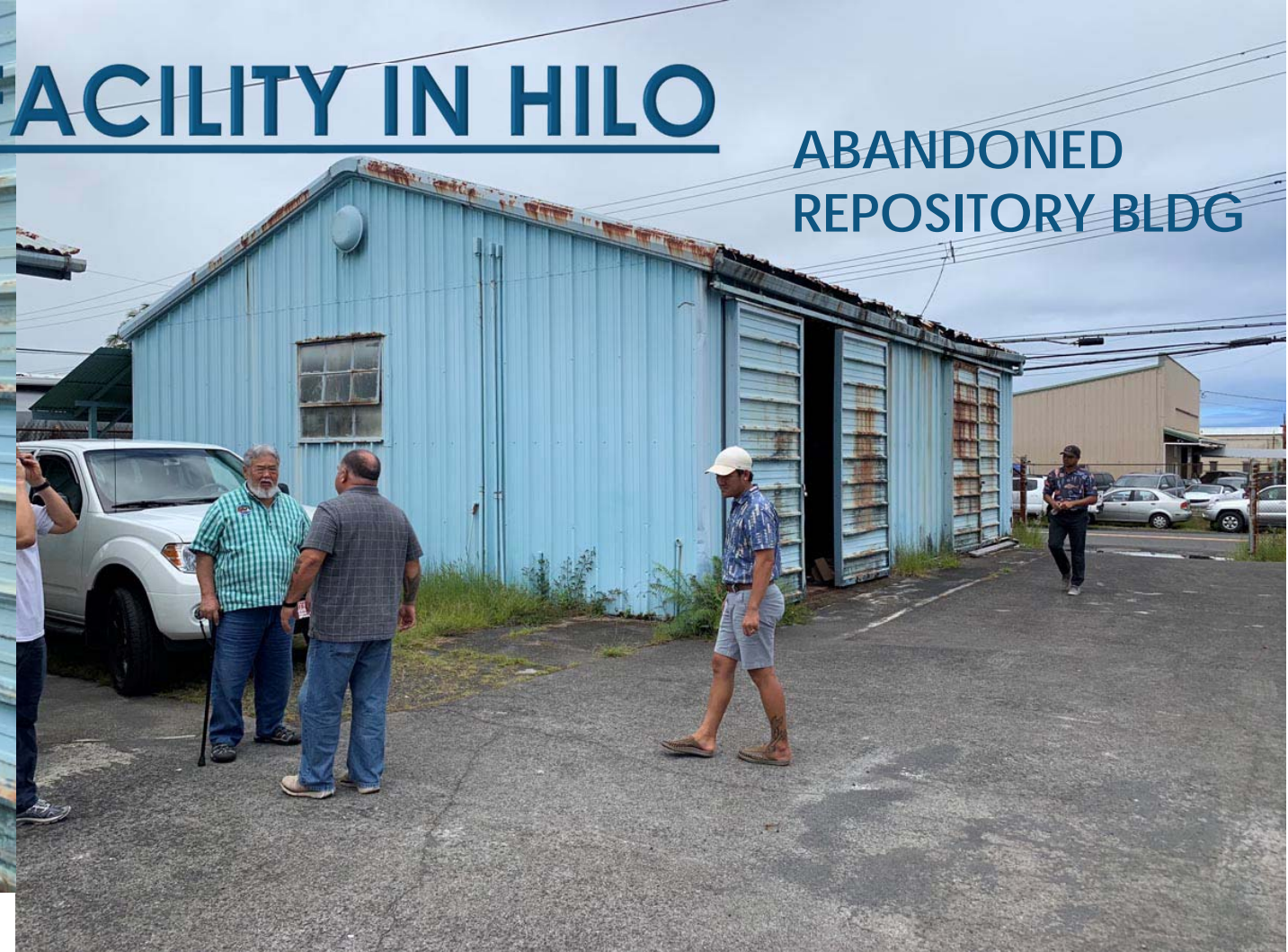
LANGUAGE AND DANCE

EXISTING DLNR SHPD FACILITY IN HILO

ABANDONED
REPOSITORY BLDG



ARTIFACTS STORAGE
BLDG



SHPD OFFICE BLDG

INTERIOR OF THE ABANDONED
REPOSITORY BLDG







WAIHOLU “RIPPLE” CONCEPT



EXPLANATION OF THE WAIHOLU CONCEPT

WAI = “THE SOURCE”. Water or liquid. When something touches the source, what radiates from the source is an extension of the energy that touched it.

HOLU = “THE RIPPLE”. Springy, pliable, resilient, as a mattress; to sway, as palm fronds; **to ripple, as waves**; to play back and forth; bumpy as an airplane ride.
(Defined by Wehewehe Hawaiian Dictionary)

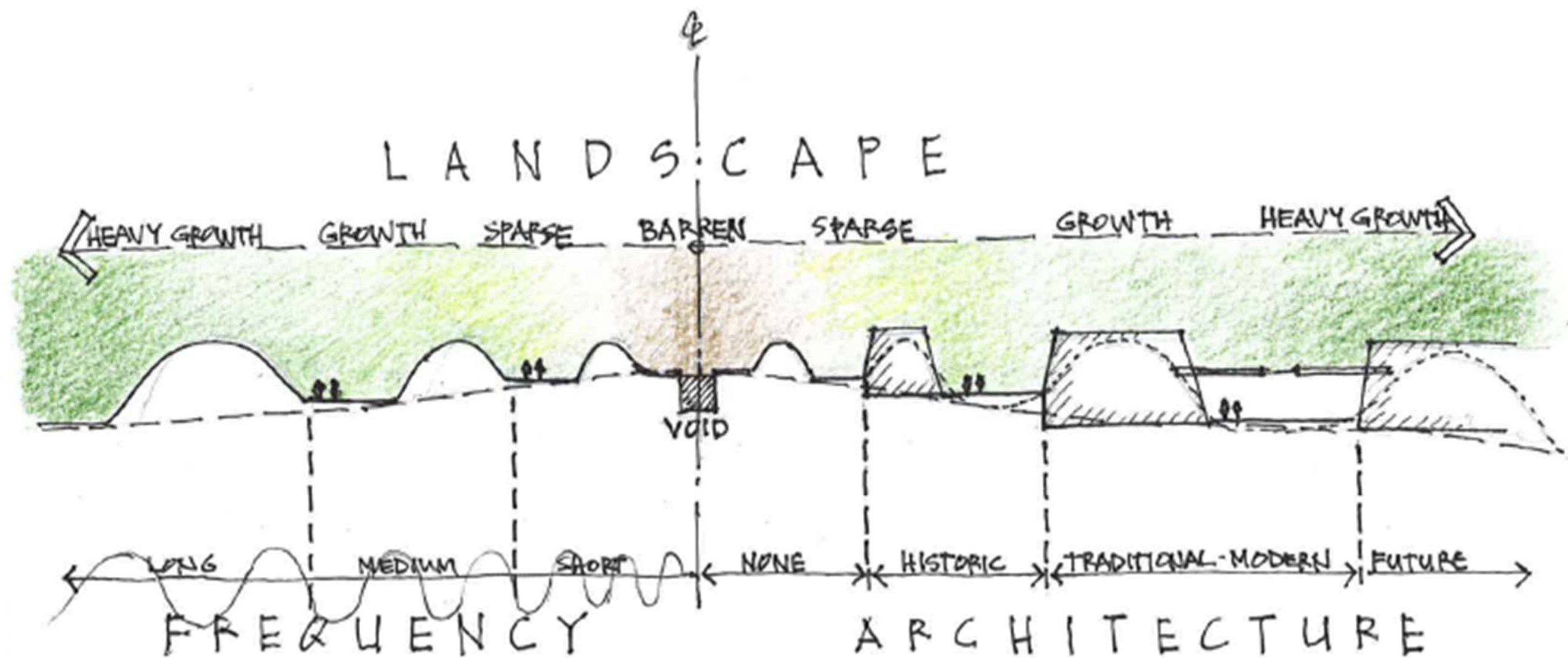
WAIHOLU CONCEPT (Credit to Lyn Belveal, Kihei Nahale-A and Eddie Hayward)

The Ripple Concept draws its inspiration from the chain of events that happens when a drop of water lands in a larger body of water, and the ensuing ripple effect which radiates out from the center. This radial pattern of concentric circles is used to organize the design of the facility. The Ripple Concept can be further explained as follows:

- Hawaii represents the drop of water.
- The Pacific Ocean represents the larger body of water.
- The ripples represent Hawaii’s cultural and environmental evolution.

At the center of the facility is a circular pool of dark water, or void. (hereinafter referred to as “piko”). The piko was caused by the drop of water marking the geological beginning of time. Surrounding the piko are the ripples. The tightly spaced and pronounced rippled landscape immediately circling the pool represents the early formation of molten lava rising from the dark depths of the sea. The ripples closest to the piko are indicative of a young volcanic landscape. As the ripples move further away from the piko they become less pronounced in height and frequency. Ground cover near the piko is jagged and young, eventually changing to weathered and eroded at the outer limits of the ripples. The landscaping follows a similar pattern. Plants located close to the piko are infrequent and sparse. The vegetation eventually increases in density as the distance to the piko becomes greater. Within the more densely vegetated areas of the space is where Hawaiian habitation and culture flourished. This is where the facilities buildings begin and will be organized following the same Waiholu Concept.

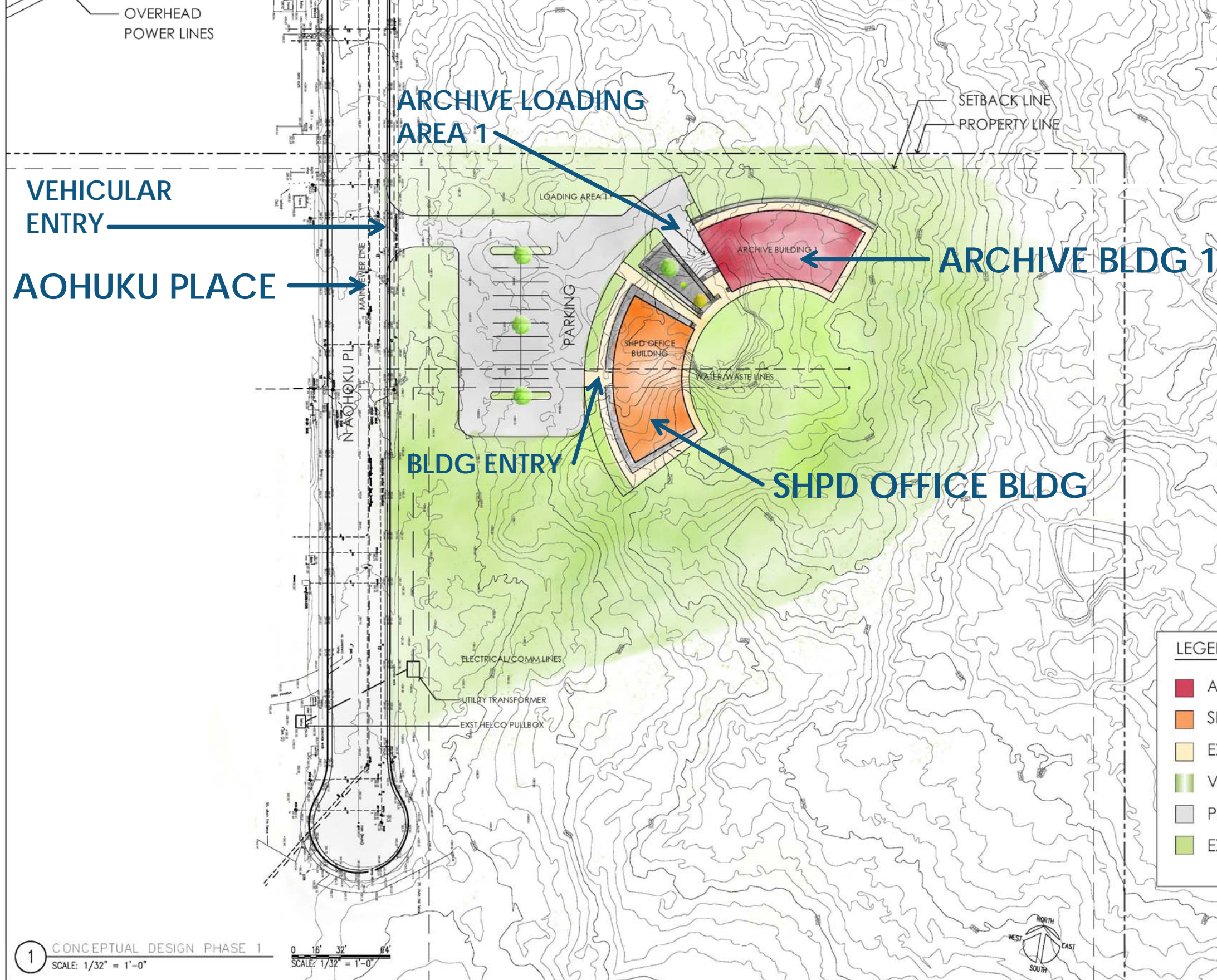
CONCEPT SECTION DIAGRAM



RIPPLED LANDSCAPE EXAMPLE



DEVELOPMENT PHASE 1



[illegible]

-  ARCHIVE BUILDINGS
-  SHPD OFFICE BUILDING
-  EXTERIOR WALKWAYS
-  VEGETATION (RIPPLES)
-  PARKING/ROAD
-  EXISTING VEGETATION



3D RENDERING



SUMMARY OF THE AREA PROGRAM

DEVELOPMENT PHASE 1:

SHPD OFFICE BLDG:	4,088 SF
ARCHIVE BLDG 1:	4,088 SF
TOTAL AREA:	8,176 SF

DEVELOPMENT PHASE 2:

ARCHIVE BLDG 2:	4,088 SF
MOKU'S 1- 6:	2,090 SF
TOTAL AREA:	6,178 SF

DEVELOPMENT PHASE 3:

COMMUNITY/MULTI-PURPOSE BLDG (FUTURE PHASE):	TBD SF
--	--------

GRAND TOTAL PROGRAMMED AREA: 14,354 SF*

*The area does not include Future Phase 3.

WHAT'S NEXT?

1. Continue dialogue with stakeholders.
2. Prepare the Draft and Final Environmental Assessments.
3. Execute the design phase ROE so that geotechnical work can be completed.
4. Advancement of the conceptual design.



Papa Ola Lokahi
Nana I Ka Pono Na Ma



**COVID-19
RESPONSE**

MARCH 2020 TO PRESENT

Presented to
**Office of Hawaiian
Affairs**
Board of Trustees

September 16, 2020
10:00 AM



**ARPA
PLAN**

October 2021 to July 2023

Native Hawaiian & Pacific Islander HAWAI'I COVID-19 TEAM

Response. Recovery. Resilience.

UPDATED SEPTEMBER 15, 2021

NATIVE HAWAIIANS

21%

11,826

24%

COVID-19

PACIFIC ISLANDERS

4%

6,801

14%

Obtained from 48,137 confirmed cases

No Race data for 1564 confirmed cases

Statewide total 73,268 confirmed cases

(missing numbers attributed to non-residents and residents diagnosed out-of-state)

92

15%

DEATHS

127

20%

www.nhpicovidhawaii.net

WHAT



New infections over 7-day period

- To 9/15 NH 679 PI 179
- To 9/8 NH 1,061 PI 223
- To 9/1 NH 1,468 PI 316
- To 8/25 NH 715 PI 216

Native Hawaiian & Pacific Islander HAWAI'I COVID-19 TEAM

Response. Recovery. Resilience.

The Native Hawaiian & Pacific Islander Hawai'i COVID-19 Response, Recovery & Resilience Team (NHPI 3R) was established in May 2020

1. Aligned with the national NHPI Response Team,
2. To improve the collection and reporting of accurate data,
3. Identify and lend support to initiatives across the Hawaiian Islands working to address COVID-19 among Native Hawaiians and Pacific Islanders,
4. Unify to establish a presence in the decision-making processes and policies that impact our communities.

Native Hawaiian & Pacific Islander HAWAI'I COVID-19 TEAM

Response. Recovery. Resilience.

HOW

➤ NATIONAL PARTNERS

➤ CO-LEADERSHIP

- Native Hawaiian
 - Dr. Keawe Kaholokula & Dr. Sheri Daniels
- Pacific Islanders
 - Josie Howard & Felea'i Tau

➤ MEMBERS

- More than 60+ Hawai'i-based NH & PI partners at the table
- Committees
 - Steering
 - Sub-Team – Native Hawaiian
 - Sub-Team – Pacific Islander
- Working Committees
 - Testing/Contact Tracing/Isolation & Vaccine
 - Social Support & Recovery
 - Data & Research
 - Communications
 - Policy

➤ CORE VALUES



www.NHPICVIDHawaii.net



Papa Ola Lokahi
Nana I Ka Pono Na Ma



King Lunalilo
Trust



THE QUEEN'S
MEDICAL CENTER
HONOLULU, HAWAII



KE OLA MAMO
Native Hawaiian Health Care System of Choice



HAWAII BUDGET
& POLICY CENTER

HAWAII
PACIFIC
HEALTH

KAPI'OLANI
PALI MOMI
STRAUB
WILCOX



OHA
OFFICE OF HAWAIIAN AFFAIRS



KAMEHAMEHA SCHOOLS®



KAISER PERMANENTE®



COLLEGE OF SOCIAL SCIENCES
University of Hawaii at Manoa



Association of
Hawaiian Civic Clubs



HAWAII
PACIFIC
UNIVERSITY



ALOHACARE



American Red Cross
Pacific Islands Region



American Red Cross
Hawaii

NĀ LIMAHANA O LONOPŪHĀ
NATIVE HAWAIIAN HEALTH CONSORTIUM



HAWAII APPLESEED
CENTER FOR LAW & ECONOMIC JUSTICE



COUNCIL for
NATIVE HAWAIIAN
ADVANCEMENT

PROJECT VISION



UNIVERSITY OF HAWAII AT MANOA

Myron B. Thompson

School of Social Work



UNIVERSITY OF HAWAII AT MANOA
OFFICE of PUBLIC HEALTH STUDIES



SCHOOL OF NURSING & DENTAL HYGIENE
UNIVERSITY of HAWAII at MANOA
Leadership • Excellence • Innovation



FAMILY MEDICINE
JOHN A. BURNS SCHOOL OF MEDICINE



PACIFIC BASIN
TELEHEALTH
RESOURCE CENTER
THE UNIVERSITY OF HAWAII AT MANOA



Kalihi-Palama
Health Center
Hale Ho'olo Hou - House of New Life



Center for Pacific Islands Studies

UNIVERSITY OF HAWAII AT MANOA



Lunalilo Home

Caring for Kūpuna - Preserving a Legacy



PARTNERS IN DEVELOPMENT
FOUNDATION



MC OH
Marshall Community
Organization of Hawaii



WAIANAE COAST
COMPREHENSIVE
HEALTH CENTER



HAWAII
PUBLIC
HEALTH
INSTITUTE



WESTERN REGION
Public Health
Training Center



PUBLIC HEALTH
LEARNING NETWORK



CLEAN BODY = FRESH START



WAIMANALO
HEALTH CENTER



Ho'ola Lahui Hawai'i i
Kaula Community Health Center



Cumulative Number of COVID-19 Cases*, Hawaii 2021

Last updated Wednesday, September 15, 2021 (updated weekly)

Data as of Monday, September 13, 2021

Number of Cases*

61,803

Note: check the box next to "Missing" to remove cases with no race information from the chart. Select a race to highlight.

Select Race



Black

Chinese

Filipino

Japanese

Native
Hawaiian

Other

Other Asian

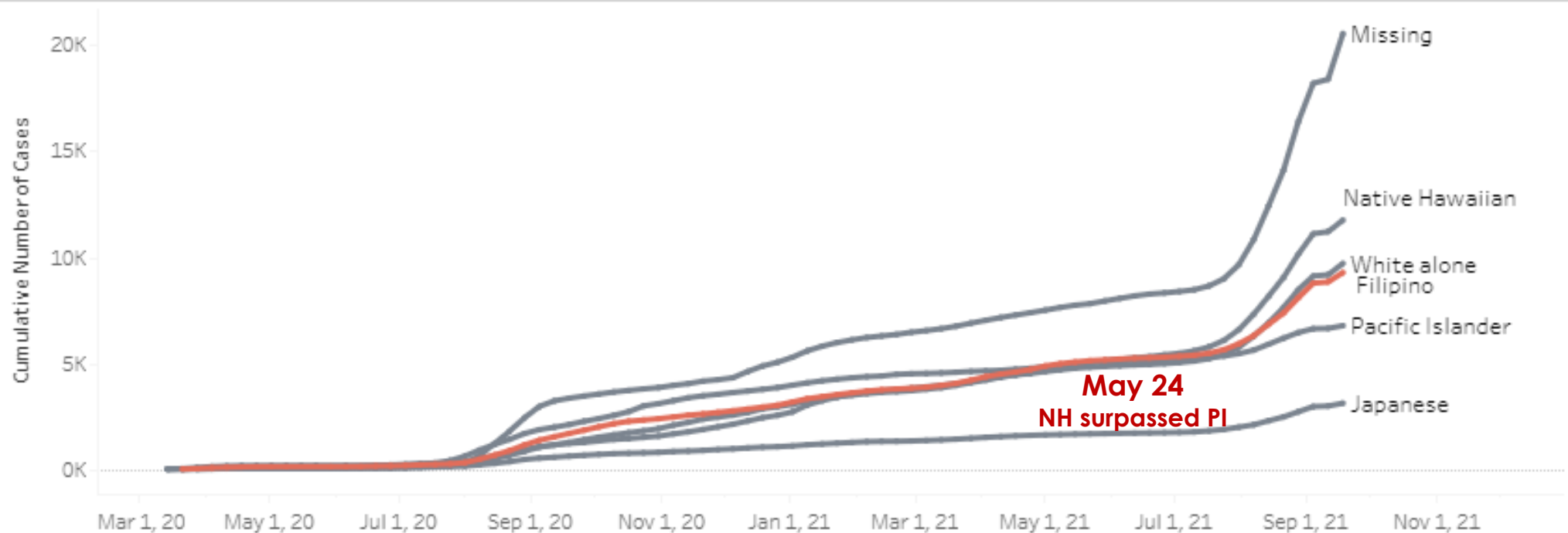
Pacific
Islander

White alone

Missing

Click one or more to compare

- ☐ (All)
- ☐ Black
- ☐ Chinese
- ☒ Filipino
- ☒ Japanese
- ☒ Missing
- ☒ Native Hawaiian
- ☐ Other
- ☐ Other Asian
- ☒ Pacific Islander
- ☒ White alone





DATA COLLECTION & RESEARCH

PURPOSE

- ▶ Improve data collection process to better identify disparities affecting Pacific Islanders and creating targeting interventions.
- ▶ Disaggregation of Data for Native Hawaiians and Pacific Islanders

ACHIEVEMENTS

- ▶ Hawaii is the only state that reports Native Hawaiians and Pacific Islanders separately
- ▶ Two abstracts accepted
- ▶ Collaboration between two major health systems for standardized data collection

COVID-19 Screening/Testing Race Data Collection Recommendations

1. What is your race/ethnicity? (Check all that apply)

- a. White or Caucasian
- b. Black or African American
- c. American Indian
- d. Alaska Native
- e. Asian Indian
- f. Chinese
- g. Filipino
- h. Japanese
- i. Korean
- j. Vietnamese
- k. Other Asian (please specify _____)
- l. Native Hawaiian
- m. Chamorro
- n. Samoan
- o. Tongan
- p. Fijian
- q. Tahitian
- r. Marshallese
- s. Chuukese
- t. Kosraen
- u. Pohnpeian
- v. Yapaese
- w. Palauan/Belauan
- x. Nauruan
- y. Kiribati
- z. Other Pacific Islander (please specify _____)
- aa. Other (please specify _____)
- bb. Unknown
- cc. Refused/Prefer not to answer

2. Pick **ONLY ONE** of these groups which best represents your race and ethnicity.

DATA COLLECTION & RESEARCH

Emerging Knowledge

1. NHPI COVID-19 Data Policy Lab Dashboard. UCLA Fielding School of Public Health; 2020. <https://healthpolicy.ucla.edu/health-profiles/Pages/NHPI-COVID-19-Dashboard.aspx>.
2. Kaholokula JK, Samoa RA, Miyamoto RES, Palafox N, Daniels SA. COVID-19 Special Column: COVID-19 Hits Native Hawaiian and Pacific Islander Communities the Hardest. *Hawaii J Health Soc Welf*. 2020;79(5):144-146.
3. Morey BN, Tulua A, Tanjasiri SP, et al. Structural Racism and Its Effects on Native Hawaiians and Pacific Islanders in the United States: Issues of Health Equity, Census Undercounting, and Voter Disenfranchisement. *AAPI Nexus Journal: Asian Americans and Pacific Islanders Policy, Practice*. 2020;17(1 & 2).
4. Samoa R, J.K. K, Penaia C, et al. COVID-19 and the State of Health of Pacific Islanders in the United States. *AAPI Nexus: Policy, Practice and Community*. 2020;17(1 & 2).
5. *COVID-19 in Hawai'i: Addressing Health Equity in Diverse Population*, released by the State of Hawai'i, the Department of Health, the University of Hawai'i at Manoa and the NHPI 3R Team



[Hawaii J Health Soc Welf](#). 2020 May 1; 79(5): 144–146.

PMCID: PMC7226312

PMID: [32432218](#)

COVID-19 Special Column: COVID-19 Hits Native Hawaiian and Pacific Islander Communities the Hardest



Call for Papers

**Roadmap to a Healthier and More Equitable Hawai'i:
Solutions to Root Causes at the Intersections of
Chronic Disease and Covid-19**

Special Issue of the *Hawaii'i Journal of Health and Social Welfare*

More Publications

- Hidden no more: Disaggregating Native Hawaiian and Pacific Islander data is a public health imperative. APHA 2021, abstract accepted.
- Addressing Native Hawaiian Pacific Islander Data Deficiencies through a Community Based Collaborative Response to the COVID-19 Pandemic. Accepted to *Journal of Health & Social Welfare*.
- The Value of Disaggregating Race Data: COVID-19 Vaccination Coverage among Pacific Islanders, Filipinos and Other Racial/Ethnic Subgroups in Hawaii. Submitted to *Asia Pacific Journal*

TESTING, TRACING, ISOLATION & VACCINATION

PURPOSE

- ▶ Addressing the NHPI needs and concerns regarding COVID-19 testing, tracing, isolation vaccination and advocates for effective contact tracing, equitable access to testing, and culturally safe education and treatment for Native Hawaiians and Pacific Islanders during the pandemic.

ACHIEVEMENTS

1. Advising the process of training, hiring & deploying statewide NHPI contact tracers.
2. Collaborating with health systems and organizations and advising the process of training, hiring & deploying community health workers throughout NHPI communities.



www.NHPICOVIDHawaii.net

POLICY



The Native Hawaiian & Pacific Islander Hawai'i COVID-19 Response Recovery Resilience Team was established in May 2020, in alignment with the national NHPI Response Team, to improve the collection and reporting of accurate data, identify and lend support to initiatives across the Hawaiian islands working to address COVID-19 among Native Hawaiians and Pacific Islanders, and unify to establish a presence in the decision-making processes and policies that impact our communities.

School Safety: supporting our kumu

Public schools were scheduled to reopen in August, but there was confusion around how students and staff will be kept safe.

The Policy Committee drafted testimony for the Board of Education (BOE) Special Meeting on 7/31/2020 in support of those seeking a delayed semester start until the Department of Education (DOE) has communicated an understandable, feasible safety plan to support our kumu and ensure safety in our public schools.

Discussion

This month, the Committee also covered:

- Supporting recommendations to state leadership on COVID-19 related content, such as incoming traveler restrictions and mandating quarantine for military families
- Emphasizing the importance of translation services and translated documents
- The omission of NHPIs in the Office for Civil Rights (OCR) bulletin, "Civil Rights Protections Prohibiting Race, Color and National Origin Discrimination During COVID-19"

Updated August 2020

Policy Committee July

Evictions: Housing as Health

As the COVID-19 pandemic continues, housing stability for renters has been identified as an issue, especially for those facing additional financial stressors (job loss, childcare needs, etc.) who may have become unable to make rent payments. Governor Ige's fifth emergency proclamation in April introduced an eviction moratorium, but organizations like Lawyers for Equal Justice and the Legal Aid Society of Hawai'i have reported that oversight is insufficient, with evidence that some landlords are still illegally demanding payments or trying to evict.

In July, the Policy Committee drafted a statement that:

- (1) outlines the importance of stable, affordable housing as a crucial health factor;
- (2) emphasizes the need for the eviction moratorium and additional assistance for housing vulnerable families; and
- (3) calls for leadership to address this issue by enforcing the moratorium and taking other actions.



The Native Hawaiian & Pacific Islander Hawai'i COVID-19 Response Recovery Resilience Team was established in May 2020, in alignment with the national NHPI Response Team, to improve the collection and reporting of accurate data, identify and lend support to initiatives across the Hawaiian islands working to address COVID-19 among Native Hawaiians and Pacific Islanders, and unify to establish a presence in the decision-making processes and policies that impact our communities.

RIMPAC Concerns

The Rim of the Pacific Exercise (RIMPAC) has a long and complex history. Given the additional concerns around public health and safety during COVID-19, the Policy Committee authored a letter to military leadership to ask for clarification on safety and health policies and received a response from Admiral Aquilino.

Honolulu City & County Resolution 20-206 testimony (SUPPORT with comments)

- Supported resolution intentions and offered comments regarding employment, housing, and education
- Encouraged moving away from economic dependency on tourism and supporting NHPI farmers and workforce

ACLU Hawai'i and 'Eko Mea Nui Support Letter

- Supports the ACLU and 'Eko Mea Nui in calling for state leadership to follow national guidelines and recommendations for pa'ahao and correctional facilities during COVID-19
- Calls for NHPI concerns to be recognized and addressed as they are the overrepresented in the justice system

Policy Committee August

Mo'omomi: Culture as Health

The Team supports calling for modern governance to recognize and codify the foundation of good stewardship and sustainability that NHPI ancestral wisdom and traditional practices provide.

As such, the Policy Committee authored the Team testimony in support of the Mo'omomi Community-Based Subsistence Fishing Area (CBSFA) on Moloka'i, and supported the rule change in order to:

- ensure future generations of Moloka'i can continue to practice subsistence harvesting;
- acknowledge the importance of maintaining traditional fishing and gathering as part of cultural perpetuation
- recognize the resiliency of Moloka'i and her people, as well as their character as a kīpuka of cultural integrity and example for other Native Hawaiian communities who seek to reconnect with sustainable living

Updated September 2020



Safe Travels

- With emerging data and promising practices, collaborated with Hawaiian and Pacific Islander clinicians to advocate for 2-step testing process for inbound travelers and mandatory quarantine.

Public Health Databases

- Appealed to National Institutes of Health to fund secondary analyses of public health databases to glean better understanding of impact of COVID-19 on Native Hawaiian & Pacific Islander communities.

SOCIAL SUPPORTS & RECOVERY

PROCESS

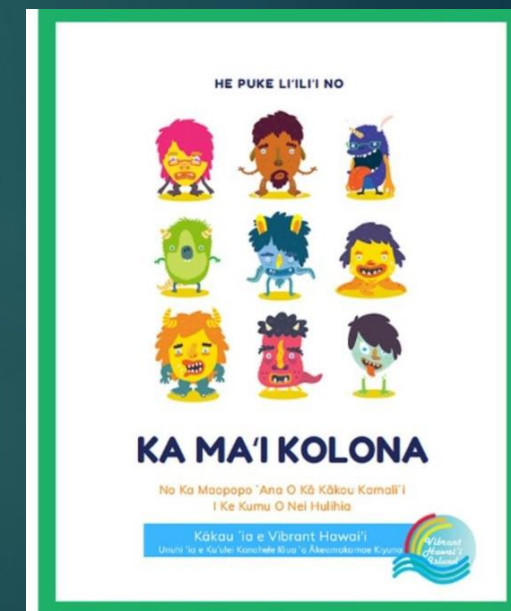
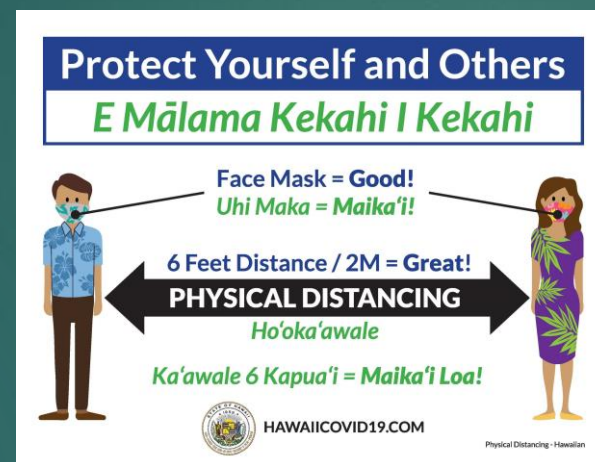
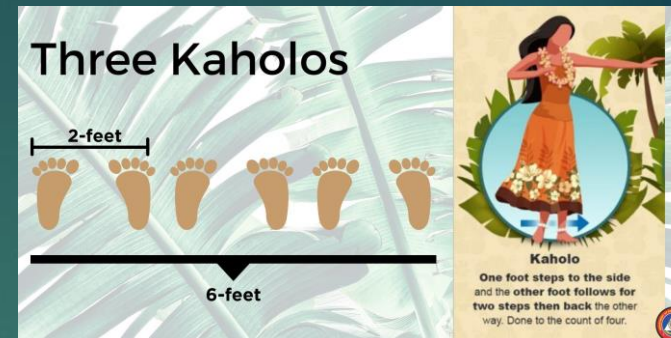
1. Assess needs
2. Scan the environment; who is doing what
3. Identify gaps and facilitate partnerships
4. Identify gaps and develop solutions
5. Evaluate and refine
6. Re-assess



COMMUNICATIONS

Recommendations, June 2020

- PSAs on radio & television
- Cultural & historical messaging
- In-language outreach



O LE TELE O
SULU E MAUA
AI FIGOTA

THROUGH COLLABORATION, THE
MOST DIFFICULT CHALLENGES CAN
BE OVERCOME

COMMUNICATIONS

- MEDIA RELEASES
- LOCAL NEWS STORIES
- WEEKLY BULLETINS
- WEBSITE updates

since July
weekly

www.NHPICOVIDHawaii.net

COVID-19 Special Column: COVID-19 Hits Native Hawaiian and Pacific Islander Communities the Hardest

HAWAII NEWS

Surge in Hawaii coronavirus cases highlights disparities for Pacific Islanders

OPINION

Thinking of traveling to Hawaii during the COVID-19 pandemic? Don't.

BY ANELA AKIONA THE SAN DIEGO UNION-TRIBUNE

NOVEMBER 25, 2020 06:00 AM, UPDATED NOVEMBER 25, 2020 07:43 AM



Native Hawaiian and Pacific Islander communities hardest hit by COVID-19

[UH News](#) » [Research](#) » [Native Hawaiian and Pacific...](#)

Guest

Hawai'i as a kipuka: a COVID-free state where we can thrive

By Dr. Kapono Chong-Hanssen and JoAnn A. Yukimura, Other Voices | Sunday, September 6, 2020, 12:05 a.m.

Pacific Islanders say they're being ignored by state in 'war' against coronavirus

Lynn Kawano · 8/8/2020



Hawaii

Pacific Islanders, Filipinos Have Highest COVID-19 Rates In Hawaii

Hawaii

Hawaii COVID-19 Data For Race And Ethnicity Is Missing

Hawaii

Hawaii Pacific Islanders Are Twice As Likely To Be Hospitalized For COVID-19

Chuukese, Marshallese and Samoan residents have been getting the deadly virus at the highest rates.

Pacific Islander communities grapple with high COVID-19 infection rates and issues with language barriers

Hawaii among nation's worst for COVID racial disparity

12,269 views · Jul 8, 2020



KHON2 News
126K subscribers

Community Voice

How One Pacific Islander Community Is Responding To The Pandemic

A Marshallese COVID-19 task force team was formed in early March to help mitigate the spread in Hawaii.

By Willfred C. Alik
September 11, 2020 · 3 min read



WEBINARS

HAWAII

- Island Hopper
- Ask-a-Kauka
- CHWs
- Telehealth
- Kūkulu Ke Ola Hāehu
- He Noi'ina Ma'i
- Hawaiian History Month
- Lālama ka Pakipika
- Nā Pu'uwai

U.S.

- Pacific Islanders COVID Town Hall
- Koviki Talk
- Data

Ask a Kauka!

Stories From the Front Lines

Dr. Gerard Akaka

Dr. Kaohimanu Dang Akiona

What is the state of healthcare now?

What's it like working during COVID?

Patient anxiety during pandemic?

September 17, 2021 at 4:00pm
Join us: bit.ly/FrontlineKauka

HAWAII COVID-19
Response Recovery Resilience TEAM

Welcoming remarks by
Sen. Brian Schatz

OCTOBER 22, 2020, THURSDAY, 12:30 PM
Register at bit.ly/NHPITelehealth

TELEHEALTH

CHRISTINA HIGA, PhD
NIKI WRIGHT, PsyD
TRAVIS PURDY
LAURA ARCIBAL
moderator

What is telehealth? What is telemedicine?
Learn more about electronic and digital healthcare delivery during the COVID-19 pandemic

HAWAII COVID-19
Response Recovery Resilience TEAM

JULY 29, 2020, WEDNESDAY, 3:00 PM HST
Register at bit.ly/50PKJXR

MODERATED BY NICOLE MOORE
THIS WEBINAR FEATURES A PANEL OF COMMUNITY HEALTH WORKERS ON THEIR ROLE IN ADDRESSING COVID-19

COMMUNITY HEALTH WORKERS

DR. ADRIENNE DILLARD
HAWAIIAN FORESTLAND, OAHU
CHAUNCEY HATICO
NATIVE HAWAIIAN COMMUNITY, KAUAI ISLAND
ANTONIA HESA
PACIFIC ISLANDER COMMUNITY, MAUI
MEETU KLEN
PACIFIC ISLANDER COMMUNITY, HAWAII ISLAND

HAWAII COVID-19
Response Recovery Resilience TEAM

MAY 28, 2020, 1:00 PM
REGISTER AT [BIT.LY/2ZEPI99](https://bit.ly/2ZEPI99)

ASK-A-KAUKA

DR. GERARD K. AKAKA
DR. NOA EMMETT ALULI
DR. H. NĀLANI BLAISDELL-BRENNAN
DR. MARCUS KĀWIKI IWANE
DR. JORDAN KALENAKAI LEE
DR. KARA WONG-RAMSEY

THIS WEBINAR FEATURES A PANEL OF KANAKA MAOLI PHYSICIANS WHO WILL ANSWER QUESTIONS AND DISPEL MYTHS AROUND COVID-19.

PANELISTS SUBJECT CHANGE

PACIFIC ISLANDERS COVID-19 NATIONAL TOWN HALL

Saturday, June 20 • 11 am - 1 pm PST

✓ Hear Stories from Survivors
✓ Get Answers to Questions on COVID-19 Testing
✓ Learn What the Statistics Really Mean

Featuring

Dr. Kawika Liu
Physician Advisor
JFK Memorial Hospital

Dr. Sela Panapasa
Associate Research Scientist
University of Michigan

REGISTER FOR THIS VIRTUAL EVENT AT bit.ly/picovid19-townhall062020

For more information, contact 'Aliei Tulua at alii.tulua@gmail.com
Hosted by Pacific Islander COVID-19 Response Team

HE NOI'INA MA'I

No Nā Hale Ma'i o Hawai'i

History of Hospitals and Health Care Systems in Hawai'i
featuring
Saige Leikuluwaimaka Meleiseā & Kahikinaokālā Domingo

OCTOBER 22, 2020, THURSDAY,
3:00 PM HST
Register at bit.ly/HaleMai

KŪKULU KE OLA HĀEHU
A WEBINAR SERIES FEATURING PRACTITIONERS OF HAWAIIAN HEALING ARTS

THE PAST WILL SAVE OUR FUTURE

WITH HAWAII ISLAND PRACTITIONERS
IKAIKA DOMBRIGUES, HOWARD PE'A
BERNIE FREITAS

July 31, 2020, FRIDAY, 3:00 PM
Pre-register bit.ly/32MY7Ps

HAWAII COVID-19
Response Recovery Resilience TEAM

JULY 8, 2020, 12:30 PM
Register at bit.ly/2ADKGWJ

ASK-A-KAUKA

MODERATED BY DR. KARA WONG-RAMSEY
THIS WEBINAR FEATURES A PANEL OF PACIFIC ISLANDER PHYSICIANS ANSWERING QUESTIONS AND DISPELLING MYTHS AROUND COVID-19

DR. WILFRED ALIK
DR. KALANI BRADY
DR. NEAL A. PALAFOX

KŪKULU KE OLA HĀEHU
A WEBINAR SERIES FEATURING PRACTITIONERS OF HAWAIIAN HEALING ARTS

SPIRITUALITY, PULE & OLA DURING TIMES OF CRISIS

WITH MOLOKAI PRACTITIONERS
BOBBY ALCAIN, SYLVIA ADAMS, PATTY MCCARTNEY

June 5, 2020, FRIDAY, 2:00 PM
Pre-register bit.ly/36PuQDw

NEXT GEN HAWAII AMBASSADORS
share

HOW SOCIAL MEDIA IS CHANGING PUBLIC HEALTH COMMUNICATION

JANUARY 28TH, 2021
3P HST

featuring

Register at bit.ly/HawaiiNextGen

WHY TRUST SCIENCE & HISTORY?
Learning who and what to trust in an era of misinformation

AUGUST 6, 2021
FRIDAY
4:00 PM HST
bit.ly/Hilinaai

John "Keoni" Kauwe, PhD
Isaiah Helekomihai Walker, PhD

Brigham Young University
Hawaii vice president and scientist specializing in the genetics of Alzheimer's disease will celebrate Kanaka maoli knowledge and scientists.

COVID-19 Housing Resources for Moloka'i

Please join Family Promise, Legal Aid, and Maui Economic Opportunity to talk about what housing resources are available through the CARES ACT.

October 20, 2020, Tuesday
2 p.m. - 3:30 p.m. HST
Register at: bit.ly/NP-webinar1

Presenters:
Nicholas Severson, Legal Aid
Yolanda Reyes, Maui Economic Opportunity (MEO)
Lama Chang, Family Promise

Moderated by
Kim Birnie, Papa Ola Lōkahi

HAWAII PONO'I COALITION PROUDLY PRESENTS

Infectious Diseases: Epidemics As Told in Literature
September 17, 2021
7:00pm-8:30pm HST

HAWAIIAN HISTORY MONTH

He Noi'ina Ma'i: No Ka Ma'i Ahulau
7:00pm HST

"Olivia, A Life of Exile in Kalaupapa"
7:45pm HST

Streaming live online at:
hawaiianhistorymonth.org
facebook.com/hawaiiponoi

CAMPAIGNS

Hawai'i are rural islands, we depend on each other to Thrive!

**Healthy Habit Hawaii
Keiki Art Contest**

Entries encouraged from November 4 - December 4, 2020
Entries sought from Native Hawaiian + Pacific Islander Community Members

www.healthyhabithawaii.com

Category: Image and/or Multi-media
Ages: 5-7, 8-11, 12-14, 15-16, 17-18
Award: Winner + 1st Runner Up

Cash prizes
No entry fee
Enter up to 5 pieces
Parental Consent Required

Over \$500 in awards!!
Entries open November 4, 2020
10am HST

Artist Call At:
www.healthyhabithawaii.com

- At least 2 art contests
- At least 4 concerts
- Several successful health fair events
- Kumu hula implemented Lāhui Kānaka



Aloha *Mālo e lelei* *Talofa*

**NEXT GEN
helps
COVID end**

Kaselehlie *Yakwe*
Alii *Hafa adai*

JOIN THE CHALLENGE FLATTEN THE CURVE

[@GENHAWAII](https://www.facebook.com/GENHAWAII) [@NEXTGENHAWAII](https://www.facebook.com/NEXTGENHAWAII)
[@GENHAWAII](https://www.tumblr.com/GENHAWAII) [@NEXTGENHAWAII](https://www.instagram.com/NEXTGENHAWAII)

Native Hawaiian & Pacific Islander
HAWAII COVID-19
Response: Recovery Resilience
TEAM

FREE CONCERT FOR PACIFIC ISLANDERS

Saturday - November 21, 2020 @ 4:30 - 8:00 PM

PASEFIKA Su'i Fefiloi
"weaving together"

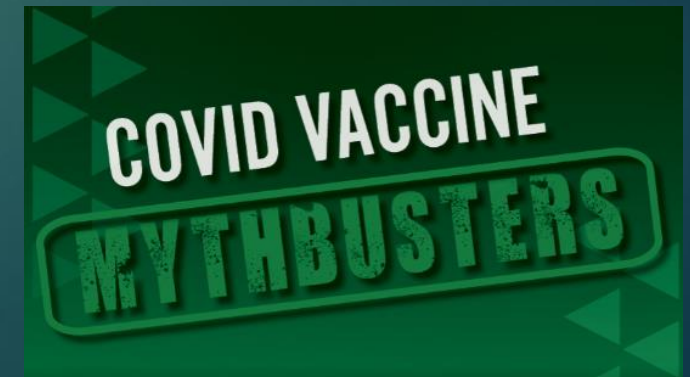
MCS COMEDY ARTIST FEATURING

TONY SILVA
DAWN O'BRIEN

DA BRADDAHS
**WATCH
on Facebook
LIVE**
[@DaBraddahsHI](https://www.facebook.com/DaBraddahsHI)
www.NHPICVIDHawaii.net

RIMAJOL
KELANDY
JOHN AKAPO
REBEL SOULJAHZ
KAPENA
JOSH TATOPI

AMERICAN SAMOA CHUUK COOK ISLAND FIJI GUAM HAWAII KIRIBATI
KOSRAE MARSHALL ISLANDS AOTEAROA NIUE PALAU PAPUA NEW GUINEA POHNPEI
SAMOA SOLOMON ISLANDS TAHITI TOKELAU TONGA TUVALU YAP





RADIO CAMPAIGN

COMPLETED: June 20 – July 31, 2021 - 6 weeks

RENEWING: September – October 2021



- Featured health care providers, mostly physicians from 5 islands
- NH & PI
- Aired on 16 stations
- 6 Friday mornings



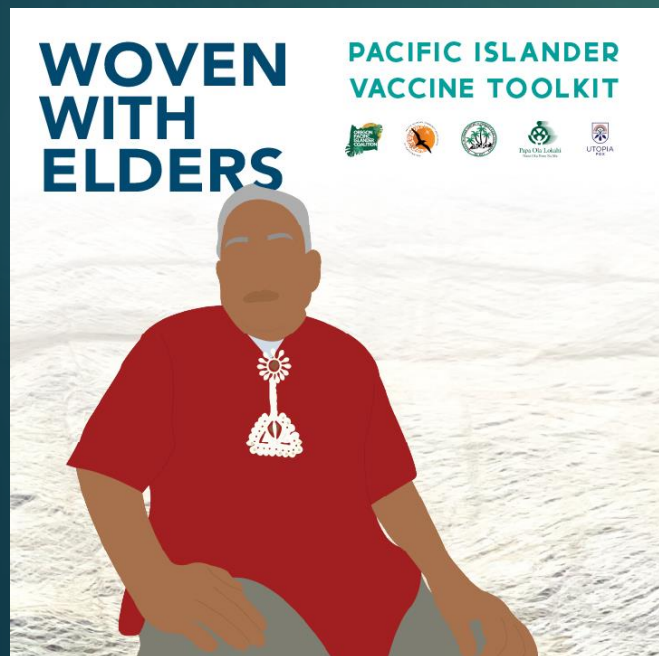
- Featured Native Hawaiian public health and medical doctors throughout Oahu
- Aired on Friday mornings
- DeeJays Mele Apana & Shannon Scott



- Featured health care providers providing in-language vaccine information
- Samoan, Tongan, Marshallese, Chuukese, Pohnpeian



TOOLKITS

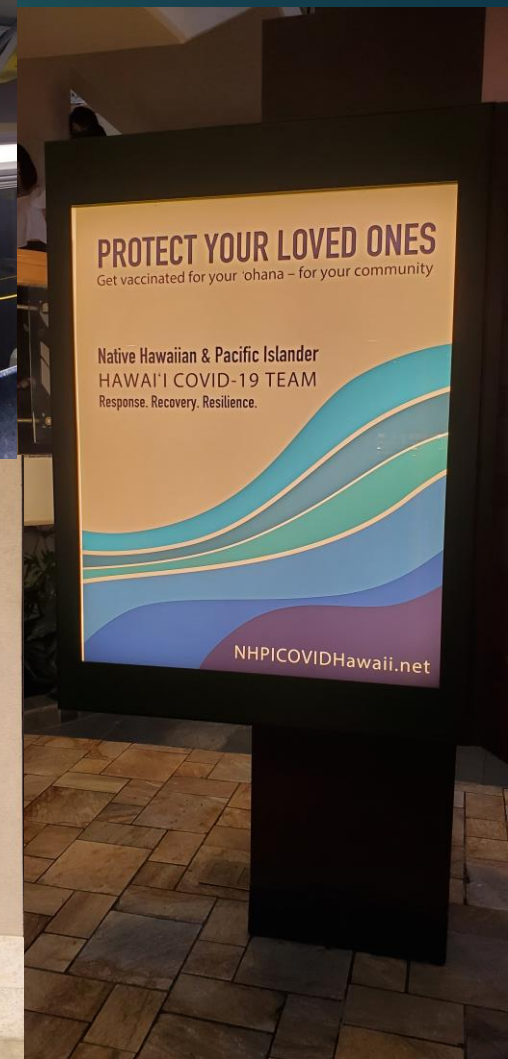


EXTERNAL COMMUNICATIONS

- DOH
- Health and medical providers - all
- COVIDpau
- OHA
- HIPHI
- Lili'uokalani Trust
- CNHA
- More!

SIGNAGE

- Mall signs
- 540 bus signs



PUBLIC SERVICE ANNOUNCEMENTS

- Funeral PSA – NHPI 3R & partners
- Kanaka COVID – CNHA & partners
- We're Not Pau Yet, Keep Wearing Your Mask – Hawaii DOD
- Wa'a – United Against COVID – OHA, KS & partners
- Discipline – Unite Against COVID – OHA, KS & partners
- Dr. Jordan Lee – Queen's Health Systems, OHA, KS & partners
- Pasefika Sui Fefiloi (9 videos) – PI SubTeam
- Vaifale Sisters – PEA, PI SubTeam
- It's Our Turn (Pacific Islanders) – Kōkua Kalihi Valley
- Kolohe Kai – Hawaii DOD
- For the Love of Our Families (5 videos) – We Are Oceania & partners (also in Chuukese, Marshallese, Kosraean, Pohnpeian)
- Royal Order of Kamehameha (:30)
- Navigators Chadd Paishon & Pomai Bertlemann, (:30)
- Navigators Chadd Paishon & Pomai Bertlemann (:60)
- Dr. Akolea Ioane (English)
- Dr. Akolea Ioane ('Olelo Hawai'i)
- Honi (COVIDpau)
- We Identify (COVIDpau)
- Hoola Vaccine (COVIDpau)
- Marcus Mariota (NHPI/POL)
- Kauka - Why We Got Vaccinated (Kauka +)

Many more!

#NHPI

#sixfeet

#oneoceanonepeople

#malamayourpalama

#Hawaiiitogether

#itsourturn

#lahuikanaka

#maskup

#Hawaiiistrong

#4theloveoffourfamilies

#malamakupuna

#notpauyet

#stayhome

#dontbeacovidiot



2021

- Vaccinations
- Recovery Plan
- Policy

Statewide progress: 65.8% eligible residents in Hawai'i are fully vaccinated

DOCD *estimates* vaccination rate among Native Hawaiians is 35% *

NHPI 3R PRIORITIES & RECOMMENDATIONS

TESTING, TRACING, ISOLATION, & VACCINATIONS

- NHPI language access
- Sustainable funding to support NHPI isolation needs
- Priority vaccinations for vulnerable NHPI groups
 - Age plus co-morbidities
 - homeless
 - victims of domestic violence
 - incarcerated individuals
 - Advocate for health equity
- Regular vaccination updates to community

SOCIAL SUPPORT

- Establish community-led advocacy
- Increased funding for public health/outreach for vulnerable populations
- Develop funding for childcare to increase access to employment for NHPI women
- Develop additional domestic abuse shelters & services
- Promote efforts to support feedback from and back to community
- Opportunities to better address NHPI specific needs
- Continue to allocate resources to promote timely and cohesive access to information relevant for NHPI

RECOVERY

- Address social and cultural determinants of health
- Promote economic resilience
- Ensure a commitment to include NHPI women in all levels of consultation, decision making, communication and outreach
- End Gender pay gap
- Implement practices for public consultation
- Repair relationship with NHPI community (historic harms and intergenerational trauma)
- Invest in place-based practices and knowledge
- Promote mobility justice and transportation policy transformation

POLICY

- Policy transformation to promote equity & use of resources and resource allocation for NHPI
- Systemic (micro, mezzo, macro) and behavioral change
- NHPI higher education pipelines and leadership training to increase social and economic mobility
- Compel NHPI representation at all levels of decision-making and resources allocation
- Increase culturally relevant education to encourage legislative engagement from NHPI
- 'Āina Aloha – Policy Playbooks

COMMUNICATION

- Information shared is accurate, timely and relevant
- Vaccination information disbursed is driven by data, including ethnicity (Race) data
- Relevant messaging that invokes cultural values & historical references
- In-language health information is critical and needs to be timely
- Digital Divide
- Funders acknowledge achievements outside of delayed funding

DATA & RESEARCH

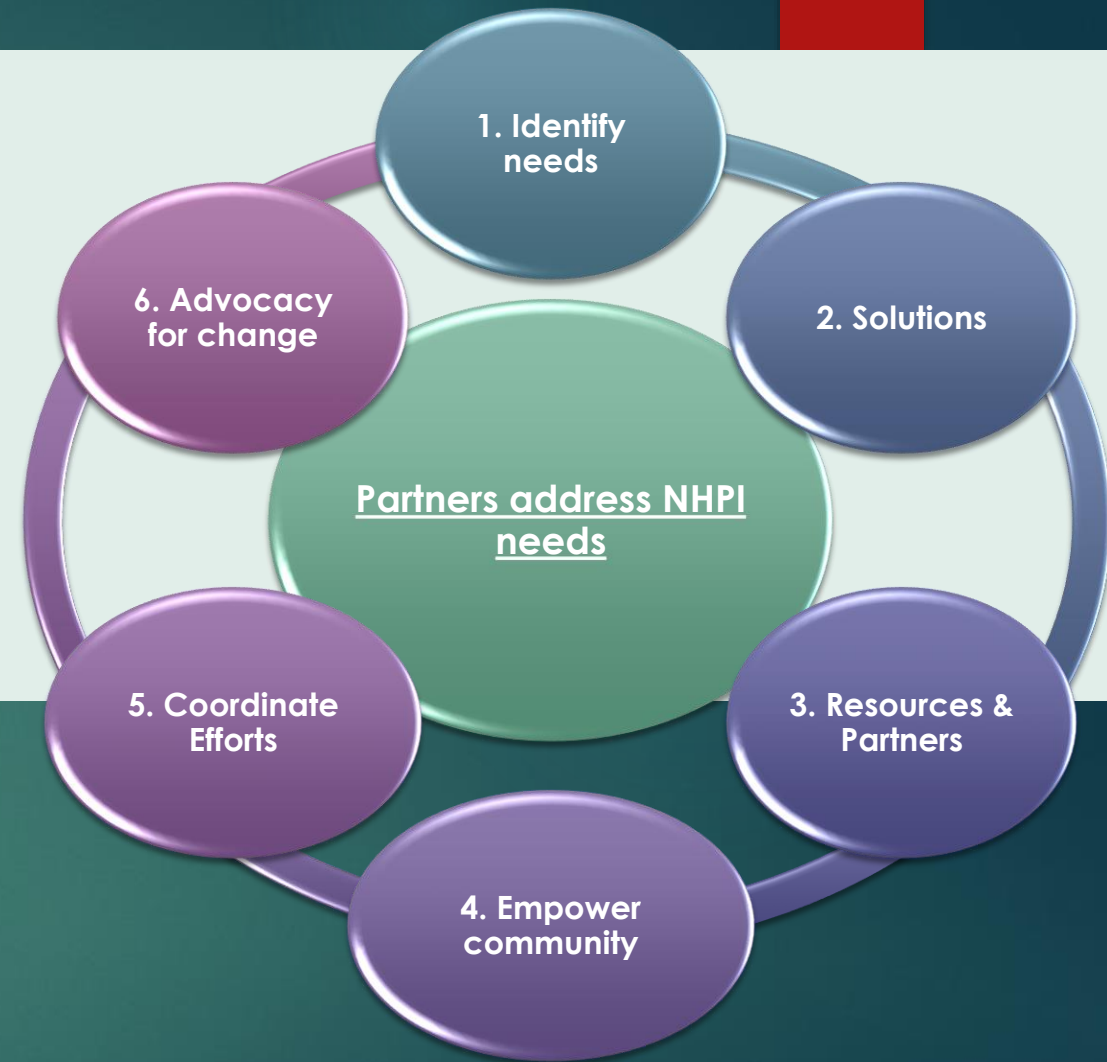
- Data Sovereignty
- Data collection governance
- Data management
- Data Reporting
- Additional research
- Prioritization of ethnicity data collection, disaggregation, and management at all levels
- Continue to collect, analyze, and publish disaggregated data
- Expand partnerships

RECOVERY PLAN

Recommendations through NHPI Lens

Identify intersection with other recovery plans

- Feminist Recovery Plan
- 'Āina Aloha Economic Futures
- Health Equity Reports





RESOURCE PARTNERSHIPS

Began end of November 2020



**HAWAI'I COMMUNITY
FOUNDATION**

Amplify the Power of Giving

Translations
Communications &
Outreach support



*In-language Tool Kit
Advertising*

Vaccination Uptick

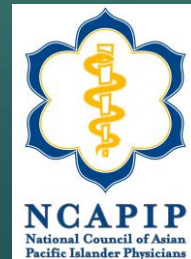
**URBAN
INSTITUTE**

ELEVATE · THE · DEBATE



*Research – Efficacy of
Targeted
Communications*

*Deploying physicians and
scientists to increase
vaccine confidence*



Walmart.org



APIAHF
ASIAN & PACIFIC ISLANDER
AMERICAN HEALTH FORUM

1. Firstline training project
2. Forging Partnerships media project
3. Vaccination Uptick



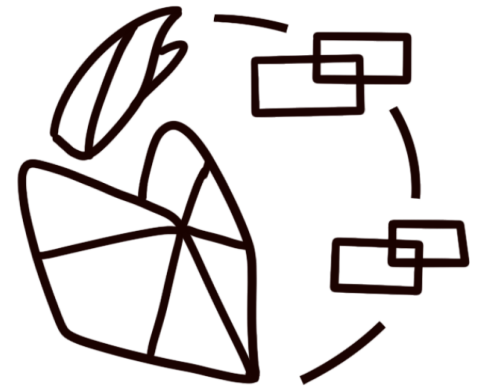
American Rescue Plan Act of 2021

March 2021

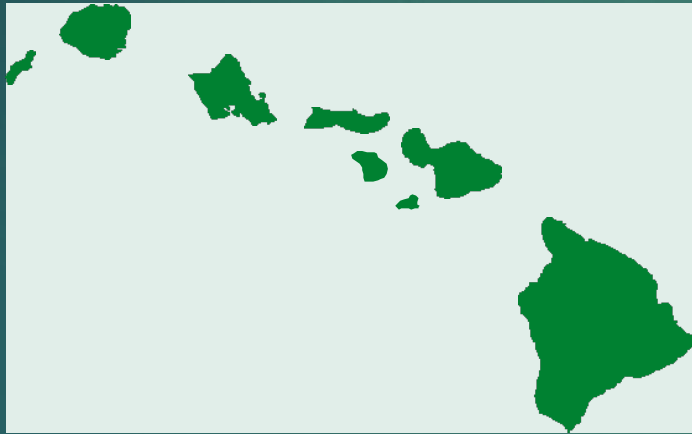
- ▶ \$1.9 trillion COVID-19 relief
- ▶ \$6.1 billion to Hawaii
 - ▶ Unemployment, small businesses, rent relief, vaccine distribution, Schools, Native Hawaiian programs, senior & disability programs, transportation, nursing homes, utility assistance, and more
- ▶ \$50 million to community health centers
- ▶ \$40 million to rural health care providers
- ▶ \$25 million to build public health workforce
- ▶ **\$20 million to Native Hawaiian Health care**

NĀ MAKAWAI

A PROGRAM ADMINISTERED BY PAPA OLA LŌKAHI



Tier 1



1. Hui Mālama Ola Nā 'Ōiwi
2. Ke Ola Mamo
3. Nā Pu'uwai
4. Ho'ola Lāhui Hawai'i
5. Hui No Ke Ola Pono

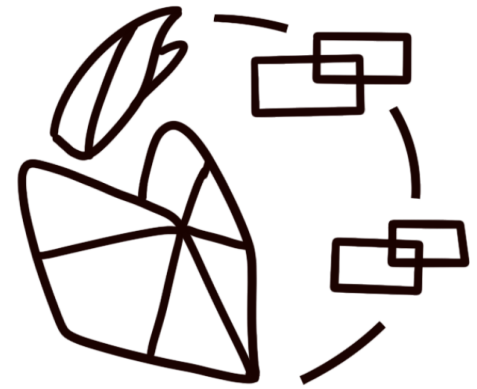
Tier 2

\$3,375,000

- | | |
|--|--|
| 1. I Ola Lāhui | 9. Lunalilo Home |
| 2. KULA no nā Po'e Hawai'i | 10. Kīpuka O Ke Ola |
| 3. Project Vision | 11. Kalauokekahuli |
| 4. Ho'oulu 'Āina, Kōkua Kalihi Valley | 12. ALU LIKE |
| 5. Kula Nui o Waimānalo | 13. Dept. of Native Hawaiian Health, University of Hawai'i |
| 6. Puni Ke Ola | 14. AHARO (Hawaiian-serving community health centers) |
| 7. 'Auamo Consulting | 15. Premier Medical Group |
| 8. Sovereign Council of Hawaiian Homestead | |

NĀ MAKAWAI

A PROGRAM ADMINISTERED BY PAPA OLA LŌKAHI



Partner organizations

- Across five islands
- Behavioral and mental health services
- Kupuna care
- Pregnancy and maternal care
- Workforce development
- Broadband access and telehealth
- Vaccination outreach and delivery
- Primary care
- Health education & outreach

Ending July 31, 2023

Scope of Work

- Increase vaccine capacity
- Improve the COVID-19 response and treatment capacity
- Increase capacity for accessible and available health care services
- Deliver health education and services during ongoing recovery and stabilization phases

Data Collection

Evaluation

Native Hawaiian Health Care Improvement Act

42 USC Ch. 122: NATIVE HAWAIIAN HEALTH CARE

§11704. Functions of Papa Ola Lokahi

(a) Responsibility

Papa Ola Lokahi shall be responsible for the—

- (1) coordination, implementation, and updating, as appropriate, of the comprehensive health care master plan developed pursuant to section 11703 of this title;
- (2) training for the persons described in section 11705(c)(1)(B) of this title;
- (3) identification of and research into the diseases that are most prevalent among Native Hawaiians, including behavioral, biomedical, epidemiological, and genetic diseases;
- (4) the development of an action plan outlining the contributions that each member organization of Papa Ola Lokahi will make in carrying out the policy of the Act.

(b) Special project funds

Papa Ola Lokahi is authorized to receive special project funds that may be appropriated for the purpose of research on the health status of Native Hawaiians and the health care needs of Native Hawaiians.

(c) Clearinghouse

Papa Ola Lokahi shall serve as a clearinghouse for:

- (1) the collection and maintenance of data associated with the health status of Native Hawaiians;
- (2) the identification and research into diseases affecting Native Hawaiians;
- (3) the availability of Native Hawaiian project funds, research projects and publications;
- (4) the collaboration of research in the area of Native Hawaiian health; and
- (5) the timely dissemination of information pertinent to the Native Hawaiian health care systems.

(d) Coordination of programs and services

Papa Ola Lokahi shall, to the maximum extent possible, coordinate and assist the health care program of the State of Hawaii.

- ▶ POL has authority for Hawaiian Health
- ▶ OHA is a member of POL

(7) Papa Ola Lokahi

(A) The term "Papa Ola Lokahi" means an organization composed of—

- (i) E Ola Mau;
- (ii) the Office of Hawaiian Affairs of the State of Hawaii;
- (iii) Alu Like Inc.;
- (iv) the University of Hawaii;
- (v) the Office of Hawaiian Health of the Hawaii State Department of Health;
- (vi) Ho'ola Lahui Hawaii, or a health care system serving the islands of Kaua'i and Ni'ihau, and which may be located on those islands;
- (vii) Ke Ola Mamo, or a health care system serving the island of O'ahu, and which may be located on that island;
- (viii) Na Pu'uwai or a health care system serving the islands of Moloka'i and Lana'i, and which may be located on those islands;
- (ix) Hui No Ke Ola Pono, or a health care system serving the island of Maui, and which may be located on that island;
- (x) Hui Malama Ola Ha'Oiwi or a health care system serving the island of Hawaii, and which may be located on that island; and
- (xi) such other member organizations as the Board of Papa Ola Lokahi may admit from time to time, upon the satisfactory development of a mission statement in relation to this chapter, including clearly defined goals and objectives for this chapter, and an estimated budget.



Papa Ola Lokahi
Nana I Ka Pono Na Ma

Mahalo!

Sheri-Ann Daniels, EdD

Kim Ku'ulei Birnie

www.papaolalokahi.org


OFFICE OF HAWAIIAN AFFAIRS
Action Item

BOARD OF TRUSTEES


September 16, 2021

BOT #21-11


Action Item Issue: Accept and Implement the Recommendations in the OHA Ad Hoc Committee on the CliftonLarsonAllen (CLA) Report entitled "OHA & LLC's Contract and Disbursement Review" Report

Co-Prepared by:  Sep 12, 2021

Trustee Keola Lindsey, Chair Date
Ad Hoc Committee on the CliftonLarsonAllen (CLA)
Report entitled "OHA & LLCs Contract and Disbursement Review"

Co-Prepared by:  Sep 13, 2021

Trustee Luana Alapa, Vice Chair Date
Ad Hoc Committee on the CliftonLarsonAllen (CLA)
Report entitled "OHA & LLCs Contract and Disbursement Review"

Reviewed by:  Sep 13, 2021

Carmen Hulu Lindsey, Chair Date
Ke Kauhuhu o ke Kaupoku, Board of Trustees

Action Item BOT #21-11: Accept and Implement the Recommendations in the OHA Ad Hoc Committee on the CliftonLarsonAllen (CLA) Report entitled “OHA & LLC’s Contract and Disbursement Review” Report

I. Proposed Action

Accept and implement the recommendations in the OHA Ad Hoc Committee on the CliftonLarsonAllen (CLA) Report entitled “OHA & LLC’s Contract and Disbursement Review” Report, Attachment 1.

II. Issue

Whether or not the Board of Trustees (BOT) will accept and implement the recommendations in the OHA Ad Hoc Committee on the CliftonLarsonAllen (CLA) Report entitled “OHA & LLC’s Contract and Disbursement Review” Report, Attachment 1.

III. Discussion¹

On July 1, 2021, the Board of Trustees (BOT) approved an Ad-Hoc Committee on the CliftonLarsonAllen (CLA) Report entitled “OHA & LLCs Contract and Disbursement Review” (the Committee). Committee members approved by the BOT were:

- Trustee Keola Lindsey (Committee Chair)
- Trustee Luana Alapa
- BOT Chief of Staff Colin Kippen
- Chief Operating Officer Casey Brown

The BOT approved scope of the Committee was to:

- Review Act 29’s (2021) provisions contained in Section 9 and Section 11 (Attachment 2);
- Review Act 37’s (2019) provisions relating to conducting a financial and management audit of the OHA;
- Determine an appropriate scope of work given the time and budget constraints set by the legislature in Section 11 of Act 29 (2021) as well as by OHA’s by-laws and personnel policies and relevant State and Federal laws; and
- Review the findings of OHA’s contracted for December 4, 2019 CLA Report; and
- Propose a plan, timeline, scope of services, and budget to hire an auditor or other third-party business or other professional as necessary to perform the defined scope of services in a timely and ethical fashion consistent with OHA’s existing by-laws and personnel policies as well as with relevant State and Federal laws, subject to approval by the BOT.

The Committee held meetings on July 19th, July 26th, August 5th, August 9th and August 17th. These meetings were held and the recommendations contained in this report were developed in accordance with BOT Governing Documents applicable to Ad-Hoc Committees.

¹ From Attachment 1

Action Item BOT #21-11: Accept and Implement the Recommendations in the OHA Ad Hoc Committee on the CliftonLarsonAllen (CLA) Report entitled “OHA & LLC’s Contract and Disbursement Review” Report

IV. Recommendations of the Committee²

The Committee achieved consensus on the following recommendations to complete the scope of work approved by the BOT:

1. **Plan:** The follow up directed by Act 29 specific to existing information in the 2019 CLA report should be conducted via **an OHA contract with an independent third party vendor.**
2. **Timeline:** The estimated term of this contract should be **four months;**
3. **Scope of Services:**
to competitively procure and engage a professional services firm that has experience in forensic services³ to conduct a follow up contract and disbursement review of the CLA⁴ – OHA & LLC’s Contract and Disbursement Review Report, dated December 4, 2019, specifically on 38 test items flagged for possible fraud, waste and abuse. The purpose of this RFP is to hire a professional services firm to determine, for each of the 38 red flag issues, whether cause to a reasonable certainty exists to believe that fraud, waste, or abuse or some combination of each of these three classifications, exists. Offerors must have experience with forensic, accounting, audit and related type engagements utilizing standards in accordance with the Statement on Standards for Forensic Services, established by the American Institute of Certified Public Accountants (AICPA) Council, Forensic and Valuation Services Executive Committee, which provides guidance and establishes enforceable standards for members performing certain forensic and valuation services; and
4. **Budget:** **\$200,000 for the hiring of an independent professional services firm that has experience in forensic services to conduct a follow up contract and disbursement review as set forth in the scope of services.**

V. Funding Source

Appropriated general funds (FY2022) in the amount of \$200,000 from Act 29 (2021) will be used to implement this recommendation, see Attachment 2, Gov. Msg. No. 1129.

“SECTION 11. Provided that of the general funds appropriated for beneficiary advocacy (OHA175), the sum of \$200,000 for fiscal year 2021-2022 shall be expended to conduct or contract or a follow-up contract and disbursement review of the CLA – OHA & LLCs Contract and Disbursement Review – Report, dated December 4, 2019.”

² From Attachment 1

³ For Request for Proposal (RFP) purposes, the term *forensic* is defined as “used in, or suitable to, courts of law or public debate”. Forensic accounting services generally involve the application of specialized knowledge and investigative skills by a member to collect, analyze, and evaluate certain evidential matter and to interpret and communicate findings (forensic services). Statement on Standards for Forensic Services No. 1, retrieved July 13, 2021 <https://future.aicpa.org/resources/download/statement-on-standards-for-forensic-services>

⁴ As the report of the previous contractor CliftonLarsonAllen (CLA) is the subject of the follow up review, CLA is not eligible to respond to this RFP.

Action Item BOT #21-11: Accept and Implement the Recommendations in the OHA Ad Hoc Committee on the CliftonLarsonAllen (CLA) Report entitled “OHA & LLC’s Contract and Disbursement Review” Report

VI. Recommended Action

Accept and implement the recommendations in the OHA Ad Hoc Committee on the CliftonLarsonAllen (CLA) Report entitled “OHA & LLC’s Contract and Disbursement Review” Report, Attachment 1.

VII. Reference Document - Posted on the OHA website via Financial Transparency Quick Link

The OHA & LLCs Contract and Disbursement Review report, dated December 4, 2019 is available in its entirety on the OHA website, see link below:

<https://www.oha.org/oha-llcs-contract-and-disbursement-review/>

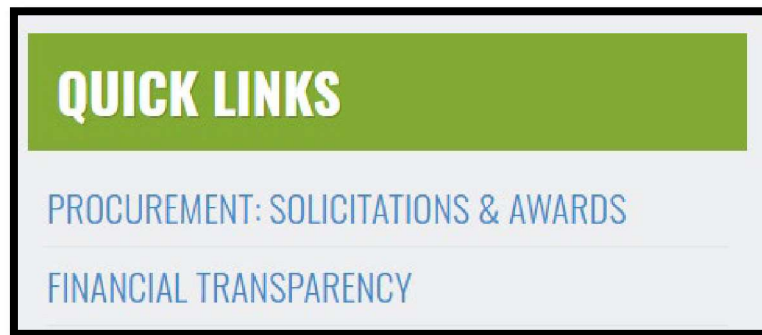


Image 1 – Quick Links on the OHA Website, Financial Transparency>

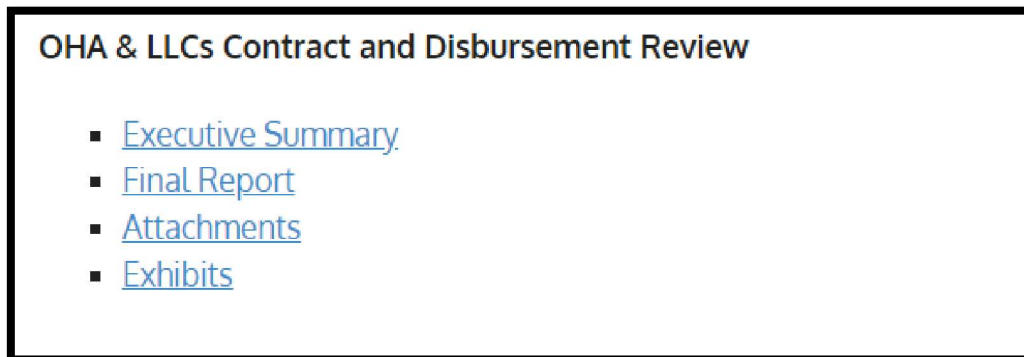


Image 2 – Financial Transparency Link, OHA & LLCs Contract and Disbursement Review documents

VIII. Attachments

1 – OHA Ad Hoc Committee on the CliftonLarsonAllen (CLA) Report entitled “OHA & LLC’s Contract and Disbursement Review” Report

2 – Gov. Msg. No. 1129 re: HB204 SD2 CD1 RELATING TO THE BUDGET OF THE OFFICE OF HAWAIIAN AFFAIRS ACT 29(21), May 28, 2021

Office of Hawaiian Affairs
Meeting of the Board of Trustees
September 8, 2021
10:00 A.M.

V. New Business

- A. Report of the OHA Ad Hoc Committee and Permitted Interaction Group to determine the scope of the Contract and Disbursement Review of the CLA Audit Report dated December 4, 2019 pursuant to Section 11 of Act 29 (2021) and to provide a process to address and comply with those requirements to the Board of Trustees. Pursuant to HRS S 92-2.5(b)(1)(B). *No discussion***

Attachment 1

OHA Ad-Hoc Committee on the CliftonLarsonAllen (CLA) Report entitled “OHA & LLCs Contract and Disbursement Review” Report

August 19, 2021

Page 1 of 4

OHA Ad-Hoc Committee on the CliftonLarsonAllen (CLA) Report entitled “OHA & LLCs Contract and Disbursement Review” Report

Background

On July 1, 2021, the Board of Trustees (BOT) approved an Ad-Hoc Committee on the CliftonLarsonAllen (CLA) Report entitled “OHA & LLCs Contract and Disbursement Review” (the Committee). Committee members approved by the BOT were:

- Trustee Keola Lindsey (Committee Chair)
- Trustee Luana Alapa
- BOT Chief of Staff Colin Kippen
- Chief Operating Officer Casey Brown

The BOT approved scope of the Committee was to:

- Review Act 29’s (2021) provisions contained in Section 9 and Section 11;
- Review Act 37’s (2019) provisions relating to conducting a financial and management audit of the OHA;
- Determine an appropriate scope of work given the time and budget constraints set by the legislature in Section 11 of Act 29 (2021) as well as by OHA’s by-laws and personnel policies and relevant State and Federal laws; and
- Review the findings of OHA’s contracted for December 4, 2019 CLA Report; and
- Propose a plan, timeline, scope of services, and budget to hire an auditor or other third-party business or other professional as necessary to perform the defined scope of services in a timely and ethical fashion consistent with OHA’s existing by-laws and personnel policies as well as with relevant State and Federal laws, subject to approval by the BOT.

The Committee held meetings on July 19th, July 26th, August 5th, August 9th and August 17th. These meetings were held and the recommendations contained in this report were developed in accordance with BOT Governing Documents applicable to Ad-Hoc Committees.

Act 37 (Session Laws of Hawaii 2019) and Act 29 (Session Laws of Hawaii 2021)

The Committee’s review of Section 9 of Act 29 confirmed that it amended Act 37 by eliminating the requirement for the State Auditor to conduct a financial and management of OHA and provisioned the release of general funds to OHA appropriated for fiscal year 2020-2021 upon receipt of the CLA Report by the Legislature.

Attachment 1

OHA Ad-Hoc Committee on the CliftonLarsonAllen (CLA) Report entitled “OHA & LLCs Contract and Disbursement Review” Report

August 19, 2021

Page 2 of 4

Section 11 of Act 29 states:

Provided that of the general funds appropriated for beneficiary advocacy (OHA175), the sum of \$200,000 for fiscal year 2021-2022 shall be expended to conduct or contract for a follow-up contract and disbursement review of the CLA – OHA & LLCs Contract and Disbursement Review – Report, dated December 4, 2019.

The Committee’s discussion on the above section confirmed four significant points directly related to the BOT approved scope of the Committee:

1. The directed follow up is specific to existing information contained in the 2019 CLA Report;
2. Section 11 of Act 29 is silent as to whether this follow up should be conducted by OHA “in-house” **or** by contracting with an independent third party. The Committee discussed this issue at length in all of its meetings, and was of the consensus opinion that this follow up review should be conducted by an independent third party and not by OHA employees or staff. The Committee reached this conclusion based upon a concern that a review by an independent third party is required to enhance the credibility, accountability, and transparency of the OHA in answering and responding to the 38 red flags highlighted in the CLA Report and in responding to the mandate of the Legislature requiring OHA to review and follow up on this CLA report as set forth in Section 11 of Act 29;
3. \$200,000 has been appropriated by the Legislature for this follow-up review;
4. The Act is silent on establishing a deadline for OHA to complete this mandated review. The Committee considered this matter, and was of the unanimous view that this review should be completed as soon as possible because the longer OHA delays in responding to the CLA report and fulfilling the mandate of the Legislature as expressed in Section 11 of Act 29 the less credibility the OHA will be perceived to have with regard to this CLA follow up. Again, the committee noted that a paramount goal is to enhance the credibility, accountability, and transparency of the OHA in responding to and completing this follow up by an independent third party in the upmost of good faith as quickly as possible; and
5. The Act is silent on what to do with this follow up review when it is completed. The Committee was of the unanimous view that the completed report should be received by the Board at which point it will become a public document.

Attachment 1

OHA Ad-Hoc Committee on the CliftonLarsonAllen (CLA) Report entitled “OHA & LLCs Contract and Disbursement Review” Report

August 19, 2021

Page 3 of 4

Review of the 2019 CLA Report .

The Committee reviewed and discussed the CLA report, focusing on the 38 transactions- 32 in OHA and 6 in OHA LLCs- flagged in the CLA Report for having a “potential” for fraud waste and abuse. The Committee concluded that determining whether cause to a reasonable certainty exists to believe that a finding of fraud, waste, or abuse, or some combination of all three, exists for each of these 38 flagged transactions is the recommended scope of follow up required by Section 11 of Act 29.

OHA’s by-laws and personnel policies and relevant State and Federal laws

In completing the scope of work approved by the BOT, the Committee was of the opinion that the future RFP, the ensuing contract negotiations with and the selection of the third party vendor, and the management of this contract by OHA must be in compliance with OHA’s by-laws and personnel policies and relevant State and Federal laws. The Committee was of the opinion that OHA Administration and Corporate Counsel should be involved as necessary to ensure that OHA’s by laws, personnel policies, and relevant State and Federal laws are adhered to and followed by the third party vendor in its performance and completion of its duties under this proposed contract.

Recommendations of the Committee

The Committee achieved consensus on the following recommendations to complete the scope of work approved by the BOT:

1. Plan: The follow up directed by Act 29 specific to existing information in the 2019 CLA report should be conducted via **an OHA contract with an independent third party vendor**;
2. Timeline: The estimated term of this contact should be **four months**;
3. Scope of Services:
to competitively procure and engage a professional services firm that has experience in forensic services¹ to conduct a follow up contract and

¹ For RFP purposes, the term *forensic* is defined as “used in, or suitable to, courts of law or public debate”. Forensic accounting services generally involve the application of specialized knowledge and investigative skills by a member to collect, analyze, and evaluate certain evidential matter and to interpret and communicate findings (forensic services). Statement on Standards for Forensic Services No. 1, retrieved July 13, 2021 <https://future.aicpa.org/resources/download/statement-on-standards-for-forensic-services>

Attachment 1

OHA Ad-Hoc Committee on the CliftonLarsonAllen (CLA) Report entitled “OHA & LLCs Contract and Disbursement Review” Report

August 19, 2021

Page 4 of 4

disbursement review of the CLA² – OHA & LLC’s Contract and Disbursement Review Report, dated December 4, 2019, specifically on 38 test items flagged for possible fraud, waste and abuse. The purpose of this RFP is to hire a professional services firm to determine, for each of the 38 red flag issues, whether cause to a reasonable certainty exists to believe that fraud, waste, or abuse or some combination of each of these three classifications, exists. Offerors must have experience with forensic, accounting, audit and related type engagements utilizing standards in accordance with the Statement on Standards for Forensic Services, established by the American Institute of Certified Public Accountants (AICPA) Council, Forensic and Valuation Services Executive Committee, which provides guidance and establishes enforceable standards for members performing certain forensic and valuation services; and

4. Budget: **\$200,000 for the hiring of an independent professional services firm that has experience in forensic services to conduct a follow up contract and disbursement review as set forth in the scope of services.**

Conclusion

With the transmittal of this report to the BOT Chair, the BOT assigned task is completed and the term of the Committee is expired.

Mahalo.

² As the report of the previous contractor CliftonLarsonAllen (CLA) is the subject of the follow up review, CLA is not eligible to respond to this RFP.



GOV. MSG. NO. 1129

EXECUTIVE CHAMBERS
HONOLULU

DAVID Y. IGE
GOVERNOR

May 28, 2021

The Honorable Ronald D. Kouchi,
President
and Members of the Senate
Thirty First State Legislature
State Capitol, Room 409
Honolulu, Hawai'i 96813

The Honorable Scott K. Saiki,
Speaker and Members of the
House of Representatives
Thirty First State Legislature
State Capitol, Room 431
Honolulu, Hawai'i 96813

Dear President Kouchi, Speaker Saiki, and Members of the Legislature:

This is to inform you that on May 28, 2021, the following bill was signed into law:

HB204 SD2 CD1

RELATING TO THE BUDGET OF THE OFFICE
OF HAWAIIAN AFFAIRS
ACT 29(21)

Sincerely,

A handwritten signature in black ink, reading "David Y. Ige".

DAVID Y. IGE
Governor, State of Hawai'i

MAY 20 2021

ORIGINAL

ATTACHMENT 2

on

HOUSE OF REPRESENTATIVES
THIRTY-FIRST LEGISLATURE, 2021
STATE OF HAWAII

ACT 29

H.B. NO. 204
S.D. 2
C.D. 1

A BILL FOR AN ACT

RELATING TO THE BUDGET OF THE OFFICE OF HAWAIIAN AFFAIRS.

BE IT ENACTED BY THE LEGISLATURE OF THE STATE OF HAWAII:

1 **PART I. GENERAL PROVISIONS**

2 SECTION 1. SHORT TITLE. This Act shall be known and may
3 be cited as the Office of Hawaiian Affairs Appropriations Act of
4 2021.

5 SECTION 2. DEFINITIONS. As used in this Act, unless the
6 context otherwise requires:

7 "Means of financing" or "MOF" means the source from which
8 funds are appropriated or authorized to be expended for the
9 programs and projects specified in this Act. All appropriations
10 are followed by letter symbols. These letter symbols, where
11 used, shall mean the following:

12 A General funds

13 T Trust funds

14 "Position ceiling" means the maximum number of permanent
15 and temporary full-time equivalent positions authorized for a
16 particular program during a specified period or periods, as
17 denoted by an asterisk (*) for permanent full-time equivalent

HB204 CD1



H.B. NO. 204
S.D. 2
C.D. 1

1 positions and a pound sign (#) for temporary full-time
2 equivalent positions.

3 "Program ID" means the unique identifier for the specific
4 program and consists of OHA, the abbreviation for the office of
5 Hawaiian affairs, followed by the organization number for the
6 program.

7 **PART II. PROGRAM APPROPRIATIONS**

8 SECTION 3. APPROPRIATIONS. The following sums, or so much
9 thereof as may be sufficient to accomplish the purposes and
10 programs designated herein, are appropriated or authorized from
11 the means of financing specified to the office of Hawaiian
12 affairs for the fiscal biennium beginning July 1, 2021, and
13 ending June 30, 2023. The total expenditures and the number of
14 positions in each fiscal year of the biennium shall not exceed
15 the sums and the numbers indicated for each fiscal year, except
16 as provided elsewhere in this Act, or as provided by general
17 law.



H.B. NO. 204
S.D. 2
C.D. 1

PROGRAM APPROPRIATIONS

ITEM NO.	PROG. ID.	PROGRAM	EXPENDING AGENCY	APPROPRIATIONS			
				FISCAL YEAR 2021-2022	M O F	FISCAL YEAR 2022-2023	M O F
1		Hawaiian Affairs					
2	1.	OHA150 - OFFICE OF THE TRUSTEES					
3				0.47*		0.47*	
4		OPERATING	OHA	0A		0A	
5				4.53*		4.53*	
6			OHA	275,687T		275,687T	
7							
8	2.	OHA160 - ADMINISTRATION					
9				5.03*		5.03*	
10		OPERATING	OHA	0A		0A	
11				31.97*		31.97*	
12			OHA	2,861,727T		2,861,727T	
13							
14	3.	OHA175 - BENEFICIARY ADVOCACY					
15				1.47*		1.47*	
16		OPERATING	OHA	2,254,400A		2,254,400A	
17				18.53*		18.53*	
18			OHA	3,292,290T		3,292,290T	
19							



1 **PART III. PROGRAM PROVISIONS**

2 SECTION 4. Provided that the general fund appropriations
3 in part II of this Act shall be expended by the Office of
4 Hawaiian Affairs.

5 SECTION 5. Provided that of the funds appropriated for
6 beneficiary advocacy (OHA175), the sum of \$500,000 in general
7 funds and \$500,000 in trust funds for fiscal year 2021-2022 and
8 the same sums for fiscal year 2022-2023 shall be expended for
9 office of Hawaiian affairs beneficiaries for occupancy ready
10 housing needs.

11 SECTION 6. Provided that of the funds appropriated for
12 beneficiary advocacy (OHA175), the sum of \$415,000 in general
13 funds and \$415,000 in trust funds for fiscal year 2021-2022 and
14 the same sums for fiscal year 2022-2023 shall be expended to
15 provide for social services, including referral services and
16 case management, to at-risk Office of Hawaiian Affairs
17 beneficiaries to immediately address unexpected crises; provided
18 further that program activities shall be designed with an
19 overall objective to provide financial assistance to improve
20 stability during emergency situations; and provided further that
21 notwithstanding section 10-17(e), Hawaii Revised Statutes, any



1 funds expended for the purposes of this section shall be in
2 accordance with chapter 103D or 103F, Hawaii Revised Statutes,
3 or a competitive grants process, as appropriate.

4 SECTION 7. Provided that of the funds appropriated for
5 beneficiary advocacy (OHA175), the sum of \$615,000 in general
6 funds and \$615,000 in trust funds for fiscal year 2021-2022 and
7 the same sums for fiscal year 2022-2023 shall be expended to
8 provide for educational improvement programs for native Hawaiian
9 students; provided further that program activities shall be
10 designed to help native Hawaiian students succeed academically;
11 and provided further that notwithstanding section 10-17(e),
12 Hawaii Revised Statutes, any expenditures for the purposes of
13 this section shall be in accordance with chapter 103D or 103F,
14 Hawaii Revised Statutes, or a competitive grants process, as
15 appropriate.

16 SECTION 8. Provided that of the funds appropriated for
17 beneficiary advocacy (OHA175), the sum of \$524,400 in general
18 funds and \$524,400 in trust funds for fiscal year 2021-2022 and
19 the same sums for fiscal year 2022-2023 shall be expended to
20 provide for legal services and legal representation to Office of
21 Hawaiian Affairs beneficiaries for:



H.B. NO. 204
S.D. 2
C.D. 1

1 (1) The assertion and defense of quiet title actions;
2 (2) Assistance with ahupuaa and kuleana tenant rights,
3 including rights of access and rights to water;
4 (3) Land title assistance, including review of title
5 and genealogy;
6 (4) Preservation of traditional and customary
7 practices;
8 (5) Protection of culturally significant places;
9 (6) Preservation of native Hawaiian land trust
10 entitlements; and
11 provided further that notwithstanding section 10-17(e), Hawaii
12 Revised Statutes, any funds expended for the purposes of this
13 section shall be made in accordance with chapter 103D or 103F,
14 Hawaii Revised Statutes, as appropriate.

15 **PART IV. RELEASE OF PRIOR FUNDS**

16 SECTION 9. Act 37, Session Laws of Hawaii 2019, is amended
17 by amending section 8 to read as follows:

18 "SECTION 8. [~~(a) Provided that of the trust funds~~
19 ~~appropriated in part II of this Act, the sum of \$500,000 for~~
20 ~~fiscal year 2019-2020 shall be expended for the costs for the~~



~~auditor to conduct or contract for a financial and management
audit of the Office of Hawaiian Affairs.~~

~~The auditor shall submit a report of the findings and
recommendations of the audit to the legislature, governor, and
the chairperson of the board of trustees of the office of
Hawaiian affairs no later than twenty days prior to the
convening of the regular session of 2020.~~

~~(b)]~~ Provided that the general funds appropriated for
fiscal year 2020-2021 pursuant to part II of this Act shall not
be released to the Office of Hawaiian Affairs until after the
[audit report required by subsection (a)] CLA - OHA & LLCs
Contract and Disbursement Review - Report, dated December 4,
2019, is received by the legislature."

SECTION 10. The general funds appropriated for fiscal year
2020-2021 pursuant to part II of Act 37, Session Laws of Hawaii
2019, shall not lapse at the end of the fiscal year for which
the appropriation is made; provided that all moneys from the
appropriation that are unencumbered as of June 30, 2022, shall
lapse as of that date.

SECTION 11. Provided that of the general funds
appropriated for beneficiary advocacy (OHA175), the sum of



1 \$200,000 for fiscal year 2021-2022 shall be expended to conduct
2 or contract for a follow-up contract and disbursement review of
3 the CLA - OHA & LLCs Contract and Disbursement Review - Report,
4 dated December 4, 2019.

5 **PART V. MISCELLANEOUS PROVISIONS AND EFFECTIVE DATE**

6 SECTION 12. Provided that whenever necessary, the board of
7 trustees of the Office of Hawaiian Affairs or the board's
8 designee may transfer sufficient funds and positions between
9 programs for operating purposes; provided further that these
10 transfers shall be consistent with legislative intent; and
11 provided further that the Office of Hawaiian Affairs shall
12 submit a report to the legislature of all uses of this authority
13 for the previous twelve month period from December 1 to November
14 30, no later than twenty days prior to the convening of the
15 regular sessions of 2022 and 2023.

16 SECTION 13. If any provision of this Act, or the
17 application thereto to any person or circumstance, is held
18 invalid, the invalidity does not affect other provisions or
19 applications of the Act that can be given effect without the
20 invalid provision or application, and to this end the provisions
21 of this Act are severable. If any portion of a specific



H.B. NO. 204
S.D. 2
C.D. 1

1 appropriation is held to be invalid for any reason, the
2 remaining portion shall be expended to fulfill the objective of
3 that appropriation to the extent possible.

4 SECTION 14. If manifest clerical, typographical, or other
5 mechanical errors are found in this Act, the board of trustees
6 of the Office of Hawaiian Affairs may correct these errors. All
7 changes made pursuant to this section shall be reported to the
8 legislature at its next session.

9 SECTION 15. Statutory material to be repealed is bracketed
10 and stricken. New statutory material is underscored.

11 SECTION 16. This Act shall take effect on July 1, 2021;
12 provided that sections 9 and 10 of this Act shall take effect
13 retroactive to June 30, 2021.

APPROVED this 28 day of MAY, 2021



GOVERNOR OF THE STATE OF HAWAII



HB No. 204, SD 2, CD 1

THE HOUSE OF REPRESENTATIVES OF THE STATE OF HAWAII

Date: April 27, 2021
Honolulu, Hawaii

We hereby certify that the above-referenced Bill on this day passed Final Reading in the House of Representatives of the Thirty-First Legislature of the State of Hawaii, Regular Session of 2021.



Scott K. Saiki
Speaker
House of Representatives



Brian L. Takeshita
Chief Clerk
House of Representatives

H.B. No. 204, S.D. 2, C.D. 1

THE SENATE OF THE STATE OF HAWAI‘I

Date: April 27, 2021
Honolulu, Hawaii 96813

We hereby certify that the foregoing Bill this day passed Final Reading in the Senate of the Thirty-First Legislature of the State of Hawai‘i, Regular Session of 2021.


President of the Senate


Clerk of the Senate