

STATE OF HAWAII
OFFICE OF HAWAIIAN AFFAIRS
560 N. NIMITZ HIGHWAY, SUITE 200
(VIRTUAL MEETING - VIA ZOOM WEBINAR)

Due to COVID-19, the OHA Board of Trustees and its standing committees will hold virtual meetings until further notice. The virtual meeting can be viewed and observed via livestream on OHA's website at www.oha.org/livestream or listened by phone: (213) 338-8477. A physical meeting location open to the general public will be available at UH – West O'ahu, Building C Room 208; 91-1001 Farrington Hwy.; Kapolei, HI 96707. All members of the public that wish to access the physical meeting location must wear a mask and follow all applicable COVID-19 requirements of the meeting venue.

Minutes of the
O'AHU ISLAND COMMUNITY MEETING
MINUTES
August 4, 2022
5:30pm

ATTENDANCE:

Chairperson Carmen Hulu Lindsey
Trustee Dan Ahuna
Trustee Kaleihikina Akaka
Trustee Keli'i Akina
Trustee Luana Alapa
Trustee Brendon Kalei'āina Lee
Trustee Mililani Trask

ADMINISTRATION:

Sylvia Hussey, CEO
Casey Brown, COO
Ramona Hinck, CFO
Everett Ohta, Interim General Counsel
Capsun Poe, Community Engagement
Lei-Ming Ayat-Verdadero, Beneficiary Svcs. Mngr.
Alice Silbanuz, Director of Communications
Joshua Koh, Multi-Media Designer
Jason Lee, Multi-Media Designer
Kaimo Muhlestein, Beneficiary Svcs. Agent
Daniel Santos, IT Support
Kevin Chak, IT Support
Arlene Aguinaldo, IT Support

BOT STAFF:

Amber Kalua, Trustee Aide
Kanani Iaea, Trustee Aide
Lehua Itokazu, Board Secretary
Crayn Akina, Trustee Aide
Kauikeaolani Wailehua, Trustee Aide
Brandon Mitsuda, Trustee Aide
Mark Watanabe, Trustee Aide
LeiAnn Durant, Trustee Aide
Pohai Ryan, Trustee Aide
Evalani Canto, Trustee Aide
Nathan Takeuchi, Trustee Aide
Anuheia Diamond, Trustee Aide
Ruben Sierra, Trustee Aide

GUEST:

Nalani Jenkins and 'Ohana
Halealoha Ayau
Heather Giugni
Sanoe Marfil
Kuuleilani Sampson
Tyler Gomes
Germaine Meyers
Pat Teruya
Douglas Harrison
Andre Perez

Call to Order

Chair Hulu Lindsey Calls the Board of Trustees Meeting to order for Thursday, August 4, 2022, at 5:30 p.m.

Chair Hulu Lindsey Aloha kākou, welcome and thank you for being here with us this evening. Tonight's meeting can be viewed by livestream on OHA's website, www.oha.org/livestream. We are also hosting this meeting on Zoom. For those of you on Zoom, we ask that you keep your cameras on and your mics muted when you are not speaking.

Before we begin, I would like to ask each Trustee to introduce themselves and their staff at this time.

Introductions

Trustee Lee Aloha mai kākou, I am Trustee Brendon Kalei'āina Lee, Trustee for the Office of Hawaiian Affairs. It is my pleasure to be here this evening, I look forward to all the presentations. Joining me this evening is my Trustee Aide, LeiAnn Durant.

Trustee Alapa Aloha everyone, my name is Luana Alapa, and I am the Trustee for Moloka'i and Lana'i. This is an amazing time, this is the first time in several years since we've been able to come out into the community and meet with all of you in person and hear all of you and your concerns. My Trustee Aide here with me, island girl from Moloka'i, Pohai Ryan. Mahalo.

Trustee Akina Aloha kākou everyone, so good to see all of you here tonight. I am Trustee-at-large, Trustee Keli'i Akina, but O'ahu is the island in which I grew up. Wai'anae is my old stomping grounds. It's so good to be back in West O'ahu today. I look forward to hearing all of your mana'o, please take the time to share all of your concerns and tell us what we need to hear. Thank you for coming out this evening. I'd like to acknowledge my two Trustee Aides that are here tonight, Ruben Sierra and Evalani Canto.

Trustee Ahu Isa Aloha mai everyone, sorry I can not be with you, I am not feeling well. I am very familiar with the Nānākuli and Wai'anae area. I am a Trustee-at-large and my Trustee Aide is there, Nathan Takeuchi. Thank you for tuning in, aloha.

Trustee Akaka Aloha pumehana kākou, I am Kalei Akaka and I am honored to serve as your OHA O'ahu Trustee as well as the OHA Chair of the Committee on Beneficiary Advocacy and Empowerment. Mahalo nui to our Chair, Administration, and to all of you here attending. I am so thankful to have these community Board meetings in our different communities here because it is so important for us hear about the needs and concerns of our community. Mahalo nui for attending and we look forward to hearing how we can further collaborate together. Joining me today is my team, Brandon Mitsuda and Mark Watanabe. I also have my 'ohana, my husband Tyler and our baby Āiwaiwa. Mahalo nui for all who are attending, we are looking forward to hearing the presentations. Mahalo nui.

Chair Hulu Lindsey Aloha again, my name is Carmen Hulu Lindsey. I am the Maui Trustee and serve as Chair of the Board. My staff here is Lehua Itokazu-Board Secretary, Kanani Iaea and Amber Kalua-my Aides. We also have our CEO, Sylvia Hussey. Sylvia will you introduce yourself and your staff.

Sylvia Hussey, CEO Aloha mai kākou, I am the Chief Executive Officer for the Office of Hawaiian Affairs. Tonight, we have joining us Capsun Poe-Community Engagement Director, Alice Silbanuz-Communications

Director, Digital Media-Jason Lees and Josh Koh, Beneficiary Services Team-Kaimo Muhlestein and Lei-Ming Ayat-Verdadero, IT Support-Kevin Chak, Arlene Aguinaldo, Dan Santos, COO-Casey Brown, CFO-Ramona Hinck, and Interim General Counsel-Everett Ohta.

Chair Hulu Lindsey I will ask our Board Secretary to do a roll call of the Trustees.

MEMBERS			Present	TIME ARRIVED
TRUSTEE	LEINA‘ALA	AHU ISA	X	Participating by Zoom
TRUSTEE	DAN	AHUNA		excused
TRUSTEE	KALEIHIKINA	AKAKA	X	
TRUSTEE	KELI‘I	AKINA	X	
TRUSTEE	LUANA	ALAPA	X	
TRUSTEE	BRENDON KALEI‘ĀINA	LEE	X	
TRUSTEE	MILILANI	TRASK		excused
TRUSTEE	JOHN	WAIHE‘E		excused
CHAIRPERSON	CARMEN HULU	LINDSEY	X	
			6	

At the Call to Order, **six (6)** Trustees are PRESENT, thereby constituting a quorum.

Chair Hulu Lindsey The new sunshine law under Act 264 is that the OHA BOT and Committees may no longer take oral testimony only at the beginning of a Board’s agenda or meeting. This means I will call on testifiers for each item on the agenda.

In order to allow time for all of our beneficiaries to testify, you will be given five (5) minutes to share your mana‘o. Your name will be called, and your microphone will be unmuted when it is your turn to testify. If you are not audible, you will be muted, and the next testifier will be called.

At this time, I would like to turn the time over to your O’ahu Trustee to oversee the rest of tonight’s meeting.

Trustee Akaka Mahalo nui, we will move on to the status of OHA activities.

Status of OHA Activities

Sylvia Hussey, CEO Mahalo. For the status of the OHA activities, I have two major points:

1. We are actively engaged in filling open and vacant positions. If our community visits our website, you will see a number of positions listed and available here on O’ahu and on our neighbor islands.
2. The organization is preparing for the 2023 State legislature as well as the 118th congressional congress that starts in January 2023. For the next few months, that is what the organization is focused on.

New Business

1. **Action Item BOT #22-11: Approval of an OHA Board of Trustees’ Honorary Resolution Honoring the Contributions of Betty Kawohiokalani Ellis Jenkins to the Native Hawaiian Community and the State of Hawai‘i***

Sylvia Hussey, CEO Reads the following resolution.

**A RESOLUTION OF THE OFFICE OF HAWAIIAN AFFAIRS
HONORING THE CONTRIBUTIONS OF BETTY KAWOHIOKALANI ELLIS JENKINS TO
THE NATIVE HAWAIIAN COMMUNITY AND THE STATE OF HAWAI'I**

WHEREAS, Betty Kawohiokalani Ellis Jenkins was born on February 11, 1928, to Richmond Kaliko Ellis and Elizabeth Nalani Mersberg Spencer McMillan Ellis on Hawai'i Island, a first born of a first born of a first born; and,

WHEREAS, Betty Kawohiokalani Ellis Jenkins graduated from Kamehameha Schools in 1945, then went on to become the first student of color to attend Muskingum College, now known as Muskingum University, in Ohio; and,

WHEREAS, Betty Kawohiokalani Ellis Jenkins enjoyed a successful career as an elementary school teacher in Ohio, California, Micronesia, Guam and Hawai'i, earning and embracing her sobriquet "Aunty Betty;" and,

WHEREAS, while with the Hawai'i State Department of Education, Betty Kawohiokalani Ellis Jenkins directed the Hālau o Hale'iwa Hawaiian Studies Program at Hale'iwa Elementary for eight years, and implemented a new teaching program called "3-on-2" in which two classrooms were combined and taught by three teachers; and,

WHEREAS, Betty Kawohiokalani Ellis Jenkins championed a code of ethics she developed known as "The 4Bs – Believe, Behave, Belong and Become" into which were integrated elements of 'ōlelo Hawai'i, tradition, history, cultural values, education, and mentorship; and,

WHEREAS, Betty Kawohiokalani Ellis Jenkins went on to serve as the alaka'i for the Office of Hawaiian Affairs' (OHA) Kūpuna Team, representing OHA at educational and cultural functions and developing the Ho'olauna Series in coordination with the Department of Veteran Affairs and the Department of Defense, which focused on providing services to veterans and military personal; and,

WHEREAS, requests for Auntie Betty's OHA workshops were in demand locally and nationally from state and federal agencies, Hawaiian civic clubs and various Hawaiian groups and organizations; and,

WHEREAS, Betty Kawohiokalani Ellis Jenkins generously served Papa Ola Lōkahi as an advisor to many of its programs including the Pacific Diabetes Education Program, the 'Imi Hale – Native Hawaiian Cancer Network, the Native Hawaiian Health Care Systems' Institutional Review Board, the Native Hawaiian Veterans Project and Papa Ola Lōkahi's traditional healing program, delivering presentations on Hawaiian values, culture and beliefs for practitioners and providers and later as an esteemed hulu kupuna who continued to provide inspiration, encouragement and guidance; and,

WHEREAS, Betty Kawohiokalani Ellis Jenkins engaged in cultural exchanges and maintained meaningful relationships with elders from other Indigenous communities, including active panel participation for 10 years in the Wisdom of the Elders session of the American Indian Alaska Native Native Hawaiian Caucus of the American Public Health Association at their annual convention; and,

WHEREAS, for her lifelong commitment to education and to 'ike kupuna, Betty Kawohiokalani Ellis Jenkins was bestowed an Honorary Doctorate for Indigenous Elders in 2016 by the World Indigenous Nations University; and,

WHEREAS, Betty Kawohiokalani Ellis Jenkins engaged with many international, national and local organizations to promote Hawaiian cultural values, beliefs and practices including the Life Foundation, Haudenosaunee Nation, Hawaiian Civic Clubs and her favorite North Shore O'ahu community groups; and,

WHEREAS, Betty Kawohiokalani Ellis Jenkins was one of the pillars of the North Shore O'ahu community and active in protecting Waimea Valley from further development in the early 2000s; in 2001 she was appointed by the City and County of Honolulu as the Cultural, Historical and Educational Chairperson for the Waimea Falls Park Master Plan, providing the foundation for Waimea Valley as a major cultural and educational site; and

WHEREAS, throughout her life, Betty Kawohiokalani Ellis Jenkins remained true and faithful to herself as a Native Hawaiian mana wahine, kupuna and member of the Waimea Valley Ahu Advisory Group from the examples she set of her commitment to community, protection of culturally significant places, and sharing of her 'ike and mana'o in order to bring about important changes to uplift and support Waimea Valley; and

WHEREAS, for her lifelong contributions to the Native Hawaiian community and the state of Hawai'i, Betty Kawohiokalani Ellis Jenkins received numerous awards and accolades including the Papa Ola Lōkahi Ka'ōnohi Award, the Office of Hawaiian Affairs Kūpuna Alaka'i Award, the Native Hawaiian Education Council Award, the Honpa Hongwanji Living Treasures Award, the Association of Hawaiian Civic Clubs Kukui Lama Kū Award, the Kamehameha Schools 100th Anniversary Alumni Recognition Award, the North Shore Chamber of Commerce 2011 Kama'āina of the Year Award, the A Hui of Hawaiian Royal Societies Ali'i Kalani Award, and recognition awards from both the House and Senate of the Hawai'i State Legislature; and

WHEREAS, the Office of Hawaiian Affairs mourns the loss of Betty Kawohiokalani Ellis Jenkins, an extraordinary hulu kupuna, educator, cultural practitioner, mentor, role model and advocate; and,

WHEREAS, the Office of Hawaiian Affairs embraces Betty Kawohiokalani Ellis Jenkins' moral code and legacy of excellence, devotion, ambience and style and her aloha for all and respect for 'ike kupuna; and,

WHEREAS, the Office of Hawaiian Affairs will strive for the wellbeing of Kanaka Maoli in loving memory of Betty Kawohiokalani Ellis Jenkins; and,

NOW, THEREFORE, BE IT RESOLVED, the undersigned duly recognized as the board chair and trustees of the Office of Hawaiian Affairs, on the 4th day of August 2022, do set forth their hand to recognize, honor and memorialize the life of Betty Kawohiokalani Ellis Jenkins; and

ADOPTED, this 4th day of August 2022, island of O'ahu, State of Hawai'i, by the Board of Trustees of the Office of Hawaiian Affairs in its regular meeting assembled.

Chair Hulu Lindsey I move to approve the honorary resolution honoring the contributions of Betty Kawohiokalani Ellis Jenkins to the Native Hawaiian Community and the State of Hawai‘i.

Trustee Akina Seconds the motion.

Trustee Hulu Lindsey Moves						
Approve the honorary resolution honoring the contributions of Betty Kawohiokalani Ellis Jenkins to the Native Hawaiian Community and the State of Hawai‘i.						
Trustee Akina Seconds the motion.						
	1	2	‘AE (YES)	‘A‘OLE (NO)	KANALUA (ABSTAIN)	EXCUSED
TRUSTEE LEI AHU ISA			X			
TRUSTEE DAN AHUNA						X
TRUSTEE KALEI AKAKA			X			
TRUSTEE KELI‘I AKINA		X	X			
TRUSTEE LUANA ALAPA			X			
TRUSTEE BRENDON LEE			X			
TRUSTEE MILILANI TRASK						X
TRUSTEE JOHN WAIHE‘E						X
CHAIRPERSON HULU LINDSEY	X		X			
TOTAL VOTE COUNT			6			3
MOTION: [] UNANIMOUS [X] PASSED [] DEFERRED [] FAILED						
Motion passes with Six (6) Yes votes, Zero (0) No votes and Three (3) Excused.						

Nalani Jenkins Thank you so much to the Trustees and OHA for honoring my mom. I had the privilege of not just being her daughter, but also being her caregiver for last 11 years when my father passed. With me today, and i'm going to ask them if they'd like to speak, is Chicky Vincent who is representing her team of caregivers. Mom was 94 when she passed, she had a good long life. I also want to introduce my wife, Tracy, who was my support team. Also, to acknowledge my two brothers, Kaipō Jenkins from the island of Maui and Kimo Jenkins who could not be here today. A quick story I will share is when mom was a teacher and, of course, she was an educator, I got books every year for Christmas and birthdays. I always longed for toys, but if it was a gift from mommy was always books and we as kids would say why is everything a lesson mom? But it was and that's the life of an educator. When she was a teacher in the Department of Education at Hale‘iwa Elementary School, they only had, if you could think back to the 70s and 80s, you only had Hawaiian studies during the fourth grade. It was mama that advocated that students should have Hawaiian studies throughout K-6th. She piloted that program, Hālau Haleiwa, and that became adopted statewide. I know there are many awards that are mentioned, thank you for reading that on behalf of the family. She really loved her Hawaiian students and all the children she taught. I am going to ask Chicky to say a few words.

Chicky Vincent She came into my life seventeen years ago. I was a cultural counselor for a drug treatment plan in Wai‘anae. I just leaned on her for values and to have a kupuna to guide me because I don‘t have any of my own. My tutu was Hawaiian but by during her generation, everything was lost. I grew up in a world

predominately Asian. It was my one grandmother who brought the Hawaiian culture into my life, but she was very haole. When aunty came along, she taught me the ho‘olauna, the bowl of light, and many lessons that are a part of everyday life. I have been blessed to be touched by her. In the end, the last two years of her life, I pretty much moved in part-time. In the end, when Aunty needed help, I moved in. I slept outside of her room on the couch every night. I was able to be with her and it was an honor. Mahalo Aunty, she will be forever my hulu kupuna.

Tracy Lawson I have also had the privilege of caring for Aunty Betty and being able to call her my mother-in-law. One thing she taught me was unconditional acceptance and love, and really how to be a part of a community. I know it is our goal to continue her work and to walk in her footsteps and to honor her memory.

Recess is taken
Returns from recess at 5:04 pm

Community Presenters

‘Ulu‘ulu Archive

Heather Giugni Aloha and thank you for this opportunity to speak with you and to tell you all about ‘Ulu‘ulu, moving image archive. We will share a video. *Video is shared.*

You had a chance to visit the media building. That is where creation starts and that is a great place where people become media makers, become storytellers, and take all their ideas, experiences, and history and turn them into stories. We are at the other end of it. When you think of creating, you also have to think of the legacy of what you've created and where that legacy is going to end up. We've never had a moving image archive here in Hawai‘i to preserve and care for our moving image history, so all of these filmmakers like Nā Maka o ka ‘Āina, Joan Lander and Puhipau, Victoria Keith and all of these people from the 70s that tracked our Hawaiian movement and moving through the decades, did not know what to do with this because there was not a facility that could take care of these kinds of things; that is when people came together, including myself, and helped pull together this concept and make it a reality. It took members of community, decades of people and generations of people to do this, and it took organizations like you to support us to make this a reality. This is a kauhale of partnerships. It can be accessed anywhere in the world.



Our Time Today

- Overview of ‘Ulu‘ulu
- Demonstration of Website and Research Process
 - Papakilo Database Project Highlights
 - Papakilo 10th Anniversary Video



Jonelle Quirante Hello, I am Jonelle Quirante, and I am the head archivist of ‘Ulu‘ulu. I am very proud to work with Heather, side by side, over the last twelve years helping to preserve Hawai‘i’s moving image heritage. You can see our mission is to perpetuate and share the rich moving heritage of Hawai‘i through the preservation of film and videotape related to history and Native Hawaiians and the people of Hawai‘i.

We have been so honored to be partners with the Office of Hawaiian Affairs. What is a moving image archive? The difference is that we work with films and videotape doing the same activities as traditional archive, in terms of collection, management, preservation cataloging and access. Just some statistics about what we take care of in our archive, we have over 70 permanent collections, 50,000 videotapes and films. Our collections are still growing, over 6,000 of those reels are digitized which is close to 3,000 hours of digital footage, 260 terabytes. It can get very technical, but our collection is growing and we're continuing to do good work. A few of the collections that we have, we work with filmmakers, we work with organizations, we work with TV stations, families who have donated their home movies, but the main common thread is that all of the footage relates to the history and culture of Hawai'i. Some of the challenges we have with preservation is dealing with obsolete technical formats, dealing with rust, mold, and dirt. We're digitizing at very high resolution files, which means we need a lot of storage capacity to maintain those files and just being in Hawai'i, high temperatures and high humidity causes a lot of physical damage to our collection.

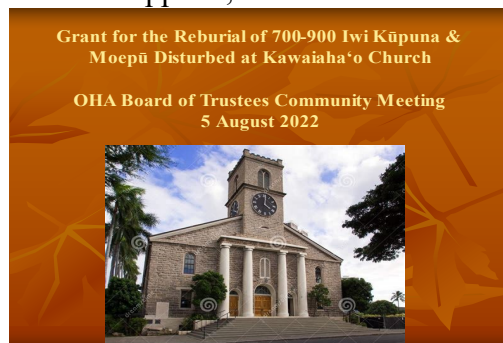


We do make our footage available to the public through our screenings and our website, lectures, and exhibits. We have been very honored to be a part of the Papakilo Database. You can visit our website at uluulu.hawaii.edu to search our collections and to view some of our collections.

Heather Giugni I just want to say the archive has been a very educational resource. It has been used by film makers to make documentaries, classrooms, and businesses. For example Hawaiian Electric, the way they did their polls, it is multi-level. It is a wealth of information and who we are in the community. I am so grateful for your support.

Kohanaiki 'Ohana, Inc., Iwi Kūpuna Reburial at Kawaiaha'o

Halealoha Ayau I am here for Hui Ho'oniho, the applicant, Kohanaiki 'Ohana is our fiscal sponsor because when we applied, we were not tax exempt yet.



Let me lay the foundation first before we get to the positive part, this project is about the reburial of between 700-900 kūpuna that were disturbed at Kawaiaha'o Church. The Kawaiaha'o Church was the Westminster Abbey of the Pacific. It was the church of our Ali'i. When the land was bequeathed to the church, there was already an existing burial site, then the church was established and then the cemetery was established. There is

a very serious lesson with this case and that is that the previous Administration at OHA donated \$1 million dollars to Kawaiahaʻo Church for the development in this case. The project was to develop a multi-purpose center in the middle of a cemetery. For those who have been around for the last thirty years and follow State burial law, that was done to prevent such activities from ever happening again. A lawsuit was filed by Dana Naeʻole Hall; a second lawsuit was filed by Paulette Kaleikini. The Hall case reached the Hawaiʻi Supreme Court. The Intermediate Court of appeals ruled that the church, DLNR, and the Department of Health (DOH) were all a part of a violation of HRS Ch.6E, and the matters should have been properly presented to the Oʻahu Island Burial Council (OIBC) for determination. This was not a matter for Dept. Of Health to exercise authority over. What DOH did is they issued a blanket disinterment permit, that means whoever holds that permit can disinter who ever they come across. Starting in 2009, kūpuna were being systematically removed. During that time, a year long hoʻoponopono took place with Dana Naeʻole Hall, Kamuela Kalaʻi, three Kahu from Kawaiahaʻo, and myself. It was an intended to try to prevent this from happening and to explore other avenues for the church to develop this multi-purpose center. After a year trying to reconcile, we failed and the church moved ahead with it's blanket disinterment permit and began removing the kūpuna. I say 700-900 iwi were removed because they cannot tell you accurately how many people they took out, sadly, because this is not the first time this has happened here.

So, the Intermediate Court ruled that the State violated the law and then ordered the matter to be remanded to the OIBC and for the council to make a determination whether to preserve in place or relocate them; in this case, preserve in place meant reburial. By the time the matter was resolved by the courts, Kawaiahaʻo had excavated the entire site. This grant was intended for *inaudible*

I want to mahalo OHA for supporting that mission. It hasn't been easy. I live on another island, the constant flying back and for the last 13 years. Many families have come forward and it has been rough, we have had to seek the help of mental health experts. The focus on this is not the pilikia, the focus should be on how do we reconcile it and how do we deal with it. How do we summon the courage to address it? Under the leadership of Hinalaimoana, when she was Chair of OIBC, I am proud to share that in June of this year, the OIBC approved the joint burial treatment plan developed by Kawaiahaʻo Church. I do want to commend the Kawaiahaʻo Church leadership for accepting responsibility for something that they weren't part of or a decision they were not part of, but still stepping into that place and making the right decisions to get the kūpuna back. We are now on the point of reburial.

I want to end by say the original sin was the disturbance of over 700 kūpuna. The importance of acknowledging when something is done wrong. Under the leadership of Kahu Ken Makuakane, we are now at the stage of where we are going to plant the iwi.

The grant that OHA provided will allow us to be able to fly in all the families when the reburial comes. We are in the process to rebury the iwi. Mahalo for the support.

Chair Hulu Lindsey When do you think the completion of the reburial will occur?

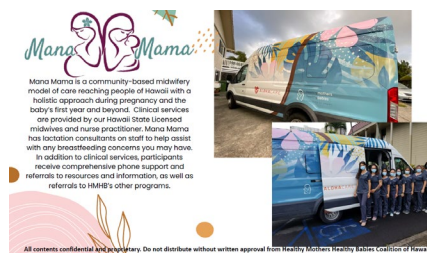
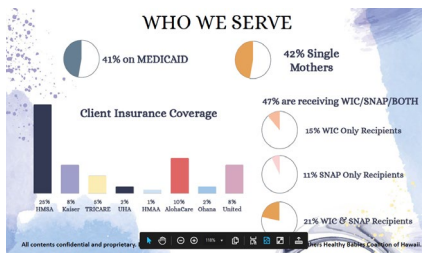
Halealoha Ayau We hope by the end of this year. There is still some obstacles in the way, but they're being worked out. The plan that Hawaiʻi Dredging developed was a really effective one and it had the support of the families. I did mention it was a joint plan meaning the families and the church submitted this plan. Through that process, there was healing of the hurt that this action caused.

Healthy Mothers Healthy Babies Coalition of Hawai'i, Mana Mama Mobile Clinic

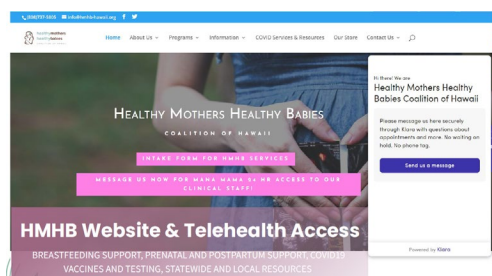
Princess Ebbay I am a Program Manager with Healthy Mothers Healthy Babies. We are a nonprofit organization and we were founded in 1992. We are dedicated to improving Hawai'i's maternal, child and family health.



Our target population is socially high-risk pregnant and birthing people, newborns/infants with a focus on black, Native Hawaiians, indigenous, compact of free association (COFA) migrants and other people of color. Other programs and Services that we provide are Piko Pals, Hawai'i Cribs for Kids, Māna'ai Food & Provisions Distribution, and most recently our Mana Mama. A brief overview of who we serve.



We have seen a demand since COVID and an increase in Native Hawaiian families requesting services as well. Our Mana Mama has a clinical team that consist of a nurse practitioner, registered nurses, midwives, lactation consultants, and doula. You may have seen our Mana Mama Clinic on the road, we bring this out to the families removing any barriers that they have to care such as transportation or childcare. Our mobile van is fully equipped with a patient bed, prenatal and postpartum appointments, lactation consultations, and family planning. We are also able to draw labs, and we are out in the community providing vaccinations. In addition, just this past December, we launched our Mana Mama tele-health platform. It allows all of our families to connect with a clinician 24 hours a day with any questions that they have. We provide breastfeeding support statewide and local resources, prenatal and postpartum support. With our 24 hour platform, they're able to speak with a clinician right away, whether it's our nurse practitioner or our midwives.



This is our homepage on our website that provides a link to our intake form so that they can self-refer and have access to any of our services, and then our little chat feature in the corner that allows them to connect. In addition to clinical services, we also offer a wraparound social service to all of our families.

We also provide food distribution; we are partner with Lanakila Kitchen, La Tour, and Hawai'i Foodbank to provide temporary provisions for our families.

Our Piko Pal new parent support program brings families together with babies between 0 to 4 months. They meet once a week for 12 weeks on creating their own little community; they talk about topics that they all decide on together. We've done a mix of in person groups and virtual groups, depending on how comfortable the families are with meeting. Our Community Doula program which provides additional support to families during pregnancy birth and even after birth. We also are participating in community events and resource fairs at the colleges. We were at the March of Dimes march for babies just providing and disseminating information to the community.

If you have any questions, you guys can email us or check up on our website. On behalf of Healthy Mothers Healthy Babies, we do want to thank you guys so much for your support and allowing us to provide the vital services to the families of Hawai'i.

Trustee Akaka What is the percentage of your clientele are Native Hawaiian?

Princess Ebbay Right now, 51%; it did go up since COVID. We were able to provide a lot of services and we were able to distribute a lot of home test kits to many Native Hawaiian families. We did this with partnerships we have in the community.

Trustee Ahu Isa Aloha Sunny, were you folks involved in lobbying for the breastfeeding?

Sunny Chen In 2017, I was not with the organization but I do believe we were involved in helping to uplift the midwives, support their work, and provide them with a living wage.

Trustee Ahu Isa Remember the shortage of the babies milk and they did not have enough, we were way ahead of that in 2017. You never know when we could run out. Okay, mahalo.

Institute for Native Pacific Education and Culture, Kupu Ola Enhancement

Sanoe Marfil Aloha kākou, I am Sanoe Marfil, Chief Program Officer at InPeace, and this is my colleague, Ku'uleilani Samson. Mahalo nui for having us. A little later on the presentation, we will be having our Program Director of our Kalama Education Academy join us via zoom. We just wanted to take a moment to mahalo OHA for providing us the support to do the work that we do in community. We are a Native Hawaiian nonprofit organization statewide and we focus on early learning school readiness, educational leadership, and teacher development, as well as family economic capacity building. I will turn time over to Ku'ulei to talk about Kupu Ola.

Ku'ulei Samson If you are not familiar with InPeace, it's a big organization that does awesome work. I get to mālama Kupu Ola. Kupu Ola is based at Waianae Intermediate's Garden. We strategically work with our seventh grade science team teachers. Currently, we have five teachers that are helping to collaborate curriculum, and four that are present in the garden with their students. Two are regular ED classes and two are a little bit of the special behavior students, and so they're more like a one on one situation where they have another teacher to accommodate their needs. They come into the garden and they're exposed to everything in the garden. In the outdoor classroom, they're able to access cultural-based education, meaning, not just working in class and learning how to grow food, but more so connecting themselves, with their identity, with the Hawaiian culture in the place of Wai'anae. We've been working a lot with our students and teachers; currently, we have 175

students. I would say about 61% of those are Native Hawaiian, and so a lot of the students that we work with are mixed, they are not only Hawaiian, but they come throughout Hawai‘inuiākea. Regardless of where they come from, even if they are transplanted into Wai‘anae, they're still exposed to this culture, so they too can find their sense of identity. I have worked with a cultural specialist and the Kumu to develop and design this curriculum that aligns with Hawai‘i science standards. In quarter one, they are introduced to their genealogy; they find who they are, where they come from, and their goal is to identify; this encourages the ‘ohana engagement opportunity. In quarter two, they learn about mea kanu. Through plants, they learn how to eat, prepare, heal, and expose them to something they cannot learn in a classroom. In quarter three, they learn mauka to makai and the place names of our community. They learn the mo‘olelo connected to these place names and why they are named these names. Quarter four, we move on to mo‘olelo, our Hawaiian Superman. Our students will recognize that Maui comes from Wai‘anae. The students are able to investigate the science of their own; they learn, they do their own due diligence. Mahalo nui to you all for your support.

Sanoe Marfil One of the outcomes is that Ku‘u is able to model for the teachers and show them how to relate to students, continue to work with students, and how to demonstrate Hawaiian values.

Angela Hoppe Cruz Mahalo nui for allowing me to share the progress made possible through your support. *Inaudible*. It's not just recruiting teachers, it's recruiting and hoping to empower and develop teachers like Auntie Betty; teachers that understand the power of a need for cultural connection. This is what we do at InPeace Educational Academy. We have been blessed to do this with OHA's support. We provide support to 200 plus community members that we are serving. 15% are OHA funded, specifically of the 15%, 78% of those folks are Native Hawaiian. We were launched in 2021 and we set out to increase, specifically this grant, the number of public charter *inaudible* I have a very vested interest in this success.

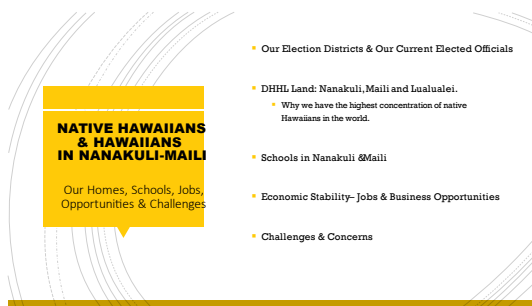
In this time period, we recruited 16 new community members. Some are starting out as substitute teachers and we also have *inaudible* of the 62 newly recruited substitute teachers, 43% are funded through the support of OHA and 74% are Native Hawaiian. One of the challenges often was the over night class cancellations due to staff shortages. It was not because of poor planning, many felt so guilty for making a doctor's appointment. Their workload was non stop pre covid and it has been exacerbated; adding to their work load, translating everything from English into Hawaiian but also the philosophical framework from English to Hawaiian. OHA's support allows to meet long-term challenges. Supporting locally rooted community members living in our community. The funding has provided us the ability to relieve the financial stress which is another huge barrier. It has allowed those who can commit to academic advancement and professional development, to worry less of gas prices. *inaudible*

Sanoe Marfil We want to thank you for allowing us to speak and share our story.

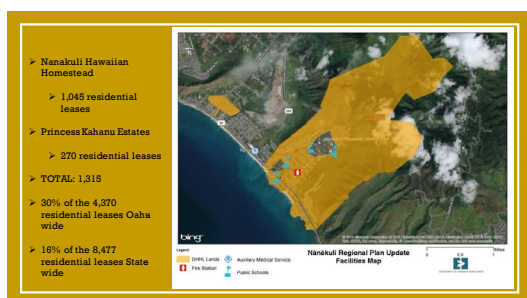
Nānākuli-Mā‘ili Neighborhood Board No. 36

Germaine Meyers Mahalo to our Trustees, thank for having us here this evening. My name is Germaine Meyers, and I am a beneficiary for beneficiary advocacy and empowerment, I am also a Nānākuli Hawaiian Homestead lessee. I am also a part of the Nānākuli-Mā‘ili Neighborhood Board #36. The neighborhood board was created by Frank Fasi, and we are a nine-member board that's been elected by our community members within our number 36 district that was designated by the city. We serve a two-year term and we're on our second year at this moment, our term ends next year in June. Our Chair is with us this evening, Patty Kahanamoku Teruya, this is her 29th year on the Board. We also follow the Sunshine Law, like OHA. We have a neighborhood board plan that has rules and bylaws that we must follow. We also have committees and there must be three members a part of each committee in order for it to start as a quorum. We also have community

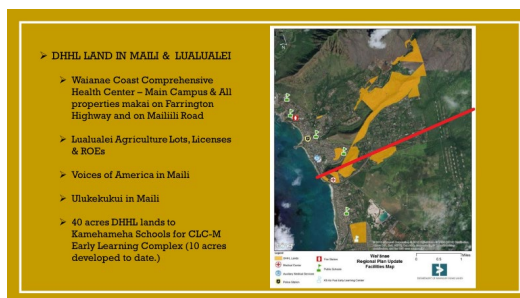
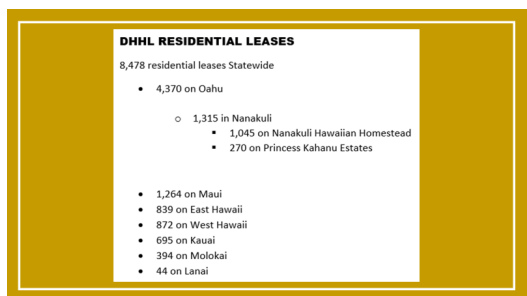
members that can join the committees. We cannot deny any community member who wants to speak on every report. My purpose of being here is to discuss with you, Hawaiian Affairs in Nānākuli and Mā‘ili. Tonight, I want to share five important points regarding the work we do and the composition of our neighborhood board.



1. Our election districts and current elected officials – Our district is part of City Council district 1 and our leader is Councilwoman Andrea Tupola; we are a part of district 22 and our leader is Maile Shimabukuro; we are a part of House district 44 and 45, our House of Representatives number 44 is Stacy Eli and number 45 is Cedric Gates.
2. DHHL Land – why we have the highest concentration of Native Hawaiians in the world.



This is a map of Nānākuli, the yellow is the Nānākuli homestead. There are 1,045 residential leases. In addition, the smaller yellow area is Princess Kahanu Estates, it consists of 270 residential leases for a total of 1,315 leases. DHHL in the last hundred years gave out 4,370 residential leases on O‘ahu. Nānākuli consist of 30% of the residential leases on O‘ahu. Statewide, DHHL has issued 8,477 residential leases and Nānākuli consist of 16%



This is why we have the highest concentration of native Hawaiians in the world because of the concentration and the amount of lots that we have in Nānākuli alone. I will now share with you the DHHL land in Mā‘ili. Lualualei is also apart of our Board #36. We have the Waianae Coast Comprehensive Health Center, the main campus, and all the properties makai on Farrington highway and Mā‘ili‘ili road. We also have Lualualei agriculture lots, Voices of America, Ulukekui, and 40 acres of DHHL land that has been leased to Kamehameha Schools. So far, ten acres of the forty has been developed to date. The waitlist of residential on Oahu is 11, 049 as of June 30, 2022.

3. Schools – The schools in Nānākuli and Mā‘ili: There are four on DHHL land in Nānākuli that serve all of Nānākuli and the Wai‘anae coast. As of 2021, 2,802 students were enrolled in these four schools. The Department of Education Strive Report notes that over 50% of these students are Hawaiian. There is one school on state land in Mā‘ili with 635 students (K-6)

4. Economic Stability – Jobs and business opportunities:

JOBS & BUSINESS OPPORTUNITIES IN NANAKULI & MAILI	DHHL LAND FOR OTHER USES	License:
<ul style="list-style-type: none"> • DOE & Charter Schools • Kamehameha Schools • Waiānae Coast Comprehensive Health Center • PVT Landfill (Non-Union) • CDL Truck Drivers and Business Owners • Farms • Luualaei Naval Facilities • Kahē Power Plant • Fast Food, Restaurants, and Stores • City, State, and Federal Government Facilities • Nanakuli Village on DHHL Land • DHHL Land for Other Uses 	<p>Right of Entry Permits:</p> <ul style="list-style-type: none"> • 438.1 acres Nanakuli Ranch-Pastoral for \$11,280 annual lease rent • 1,126.0 acres Lyman Ranch-Pastoral for \$14,304 annual lease rent • 1.1 acres Mary Ann Higashi Stabling for \$339 annual lease rent • 0.155 acres Chelene L. Ching-Cantaleira for \$240 annual lease rent • 6.4 acres Kennard Hicks-Agriculture for \$240 annual lease rent • 2.0 acres Frances Kama-Silva-Industrial (same parcel as Pastoral) for \$6,427 annual lease rent • 8.0 acres Frances Kama-Silva-Pastoral (same parcel as Industrial) for \$2,772 annual lease rent • 0.712 acres Waiānae Coast Comprehensive & Hospital Board Inc-Community for \$2,088 annual lease rent (Butler Building in Nanakuli) 8-9-004/021 p. • 2.0 acres Waiānae Coast Comprehensive & Hospital Board Inc-Community for \$480 annual lease rent 8-6-001/012 & 024 p (WCHC in Waiānae—land for extra parking lot on Maili Road) • 20 acres State DOI Clean Water Branch-Public Service for \$0 Gratic restore vegetation within drainage basin • 7 acres US DOI & Control Point Surveying Inc-Public Service \$0 Gratic conduct land surveying field activities, including not limited to data collections and survey monumentation. 	<p>License:</p> <ul style="list-style-type: none"> • 7 Acres Honolulu Community Action Program Inc—Head Start Program-Education at Ka Waiānae for \$3,960 annual lease rent • 0.05 acres Ika Puapua Yeo Inc.-Education at Ka Waiānae for \$4,200 annual lease rent • 0.586 acres Kamehameha Schools-Education at Ka Waiānae for \$27,552 annual lease rent • 0.342 acres Ka Waiānae O Ka Hā‘e‘e Charter School-Education for \$0 Gratic; educational services, SOH Charter School • 1.227 acres Kamehameha Schools-Ho‘āloa Drake Preschool in Princess Kaiulani Estates for \$0 Gratic • 7 Acres House of Salvation Church-Church (Pastor Kevin Kwan) at Ka Waiānae for \$4,080 annual lease rent • 1.021 acres Boys & Girls Club of Hawaii-Public Service for 1,000 annual lease rent • 1.05 acres Nānāhāhā Protestant Church-Church for \$220 annual lease rent • 0.86 acres St. Rita's Catholic Church-Church for \$187 annual lease rent • 1.49 acres Nanakuli Court Faith Mission Church for \$325 annual lease rent • 97.764 acres Kaala Farm Inc.-Community/Cultural for \$0 Gratic; Curatorship, conservation and operation of the Cultural Learning Center at Kaala • 0.011 acres T-Makale West Corp.-Telecommunication for \$23,805 annual lease rent • 0.148 acres Verizon Wireless-Telecommunication for \$18,295 annual lease rent • 0.488 acres C&C of Honolulu Nanakuli Fire Department for \$10,000 annual lease rent • Various City, State, Federal for utilities, parks, transportation, etc. \$0 Gratic

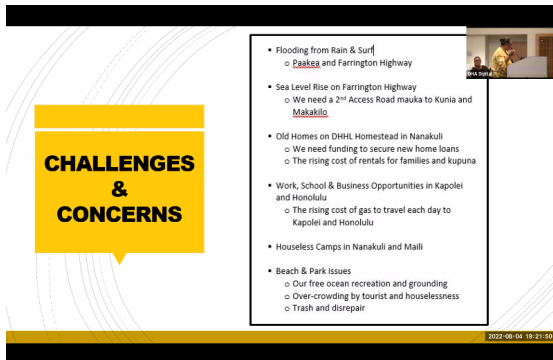
I want to share with you next is the DHHL land for other uses. As a business owner, you need land. DHHL has issued Right of Entry (ROE) permits for DHHL lands in Nānākuli and Mā‘ili specifically to these organizations, companies, or individuals. I have included the acreage for each one and the annual lease rent. For example, Nānākuli Ranch is a pastoral lease or ROE, 438 acres for \$11,200 annual lease rent. This is less than a \$1,000 a month. Lyman Ranch, 1,126 acres for \$14,304 annual rent which is a little over a \$1000. I listed these for you to take into consideration that maybe there are opportunities for Hawaiians, like parks or other uses as well that can serve our community.

Finally, general leases, Nānākuli Hawaiian Homestead Community Association was given a two acres parcel. They built Hale-Makana for an annual lease rent of \$1. Then 9.8 acres of was given to Nānākuli Hawaiian Community Association for Nānākuli Village which they are charged \$110,000 annual lease rent. We also have Kamehameha Schools, they have a learning center on 2.6 acres with an annual rent of \$41,600. When the mission of DHHL is to rehabilitate native Hawaiians and award residential, agriculture, and pastoral leases, why is a general lease given to a non-Hawaiian for eleven acres, for agriculture, on Wai‘anae Valley road for \$7,920 annual lease. Couldn't that go to a Hawaiian to serve his or her family? These are the kind of things I look at because I want opportunities for Native Hawaiian families in my community.

I also have a concern that my Association in Nānākuli is charged \$110,000, which is less than \$10,000 a month, but they charge a Native Hawaiian business owner for a small store front \$6,000 a month which comes out to \$72,000 a year. That is concerning to me. Take the money from Longs Drugs, Wendy's, or Starbucks, but a native Hawaiian lessee, beneficiary, graduated from Nānākuli High School went and got a loan, created a storefront, and are selling goods at affordable prices but being charged \$6,000 a month. It really hurts my heart. These are the concerns I will be expressing to DHHL. I am sharing with you so that you can understand some of the challenges that we face in our community as Native Hawaiians.

This last piece are concerns and challenges – Flooding from rain and surf. Just recently, Pa‘akea residence were stuck in their homes for days from the rain flooding out the road and they could not get out of their properties. These are farm lots at the top of Hakimo Road. We also had, across the McDonald's of Nānākuli, high surf that flooded Farrington Highway. These are some obstacles that we share with many other community members. We need a second access road, we are worried about sea level rise.

Old homes on DHHL in Nānākuli, we need funding to secure new home loans. The rising cost of rentals for families and kūpuna are also a concern.



Other issues are the houseless camps in Nānākuli and Mā‘ili. Our free and ocean recreation is overcrowded by tourist and homelessness. There is a lot of trash and disrepair. Recently, I read an email to Chair by community members that there was 12 tons of trash that had to be taken away from the park. These are all of the concerns shared by our community. Ke Akua Pū, God bless all of you.

Patty Kahanamoku Teruya Mahalo nui for having us. *Inaudible* the Charter was created under the City and County back in 1983 to provide neighborhoods to be a grass roots entity to our elected officials. We are an advisory board and we are covered under Robert’s Rules. We have 36 neighborhood boards accross O‘ahu and we are #36. We are serving our community and finding ways to make life better for our community. This can be transportation, housing and so much more. I want to express that Nānākuli Neighborhood Board has a Hawaiian Affairs Committee, and we established that Committee because we wanted to network with the Office of Hawaiian Affairs, with Trustees, with the Department of Hawaiian Homes to bring out these issues for our Native Hawaiians, this way we can network and collaborate together. We try to educate our community on what OHA does so that we can support these budgets. I just want to thank you again for having us here and I appreciate all of you here.

Douglas Harrison – Testifier re: Dept of Hawaiian Homelands

He shares that he looked over many documents regarding Mauna Kea and the income being collected. He is concerned that OHA is not getting their fair share of money.

Department of Hawaiian Homelands (DHHL)

Tyler Gomes Mahalo nui to all of you for the opportunity to come and address you folks. We do have a share of beneficiaries; all of our beneficiaries are your beneficiaries and we appreciate any opportunity for us to come and update you. I will update everyone on the \$600 million; a strategic plan is due to the legislature in December. The Commission has approved a Permitted Interaction Group (PIG) which has begun discussions. At the July Commission hearing, they presented a preliminary approach to the strategic plan. A quick highlight which is tentative, an additional 572 lots in Maui County, additional 1,500 lots in Honolulu County, 190 in Kaua‘i County, and 440 on Moku o Keawe. You are familiar with the budgeting process so we are dependant on phased funding with the \$600 million infusion. We are hoping to do development agreements which is something untested for the Department but would allow us to do design, construction, and planning all in one contract. The funding would also be used and considered for rental opportunities; you are aware of our development in Mō‘ili‘ili with Stanford Carr. We also have an additional property that we aquired across the street from KS. If the Stanford Carr property turns out to be a success, then we have other opportunities to continue developing in the urban core. O‘ahu has the longest waitlist out of all the islands and has the least available amount of lands. The other point I want to point out is the desire to aquire property, we are allowed with that money to aquire undeveloped or developed property. We can aquire new units, so not only is it very appealing, it might help us to spend the money faster. We only have two years to spend it thanks to a technical issue with the bill. Also, it would expedite the timeline. We have had a number of offers come in the last few weeks for various properties across the State and we are considering all of them. With that, if the Office of

Hawaiian Affairs had land anywhere and wanted to talk to DHHL about it, we would be remiss not to consider the opportunity.

Community Concerns and Celebrations

Germaine Meyers Aloha Trustees, I wanted to share with you this evening the similarities of our neighborhood boards. We are a nine member board; not one of us can move mountains, it is a collaborative effort. It takes five people to vote to move mountains or to take action on proposals. I started coming to OHA back in 2016 and I can't believe how fast time has gone by. I came at the cusp of an OHA audit; that OHA audit forced OHA to review their bylaws and to review their policies. We are also allowed to have PIGs and it is not just one person, it is a collaborative effort. Trustee Akaka, you remind me of your grandfather, the late Senator Daniel Akaka; you make everyone feel important and they are being heard but also the members of the community. I also want to say mahalo to Chair Hulu for starting these multiple meetings on O'ahu; we never had that. I just want you to know how important it is for us. I appreciate that some of you know that you will never get 100% of the votes and sometimes you make concessions for the greater good of all; you relinquish your vote to take it over the finish line so that action can be taken. I truly appreciate each and every one of you.

Andre Perez Aloha mai kākou, I have a couple issues to bring up. Thank you Trustees for hearing us. First issue I want to talk about is iwi kūpuna repatriation. There is an issue that we are helping with, me and my non-profit; we are helping Iwi Kuamo'o led by Halealoha Ayau and others. I respect them as the most experienced, knowledgeable practitioners when it comes to iwi kūpuna repatriation. This is in the process, ceremonies, the hana nui, and the work. They have over fifty years of experience of iwi kūpuna repatriations. Some of these repatriations were thirty years in the making, some are twenty years, and some are fifteen years. There are seven pending cases in the horizon right now across Europe. I am expressing my concern right now that OHA is not putting enough priority and perhaps hindering the process of these iwi kūpuna coming home. As you folks know, OHA is the claimant because OHA is a government agency, but OHA is not providing any funding support to bring these iwi kūpuna home. Earlier this year, many of us have seen either publications or social media websites that OHA has gotten a lot of fan fair and taken a lot of credit for the iwi kūpuna repatriations that have happen this year. 65 sets of iwi kūpuna came home this year. There is another trip coming up to bring more iwi kūpuna home, but OHA is not providing any funding support; we know that and you know that. At the last OHA meeting on Kaua'i, I told you folks that I was helping to fundraise and I have asked the Native American organization who I have relationships with called NDN Collectives. They have committed to fund all the money we need for the seven pending iwi kūpuna repatriations. It is important that whatever the personality issues we have, the iwi kūpuna coming home from Europe after decades are priority. I am here to implore OHA to please be proactive and supportive in making it happen. OHA does not do the heavy lifting, the negotiations, tracking down the iwi, finding the locations, and the decades of work. The emotional and psychological burden and trauma of that work is immense. I would not want to be Halealoha Ayau. The kaumaha is painful. I feel hilahila, shame, that we have to go to Native American organizations and ask them for money; this should be OHA's kuleana to provide funding. OHA has not provided any funding for any of the repatriations, that is shame on us especially, when you are promoting the return of iwi kūpuna and taking credit. I am going to keep coming back. I am hurt and shame that we need to find funding outside of Hawai'i to bring our people home. It is a basic fundamental Hawaiian value to be buried in our homeland. It is codified in mele, oli, and pule. I am here to implore you to please take away the restrictions, the barriers, the personality differences, the obstructions, and help get our kūpuna home.

My second concern is Pohakuloa Training Area. There is an issue that is not getting any media coverage. Firefighters that are stationed at Pohakuloa Training Area, which is a federal fire department. The federal fire department is in charge of air crash rescue and runways, that is their kuleana. Some of the firefighters, who are

Hawaiian and from the surrounding area, reached out to me about four months ago expressing concern; their concern is that the army wanted to do a large scale, control burn. The firefighters have been telling the army that it is not a good idea to do this in that area. One, they are not trained for that, they deal with air crashes; two, they do not have capacity. Pohakuloa Fire Department has a normal, daily staffing of thirteen firefighters; they have been operating with six firefighters for years. They also have ten wild land fire fighting vehicles, nine of them are broken. This past month was RIMPAC and due to live fire training, a fire was started about two weeks ago. The firefighters have advised the army that they wanted to put it out while it was still containable, 400 acres was on fire. They requested support from Wheeler Army Airfield and the Army denied that support. That fire has burned out of control, 3,500 acres of critical and endangered habitat area around Pohakuloa. There is a biologist that has stated that if the fire gets out of control, it will be an extinction event. The area is known as an area 22 with native plants. Twelve federal firefighters have submitted statements and complaints against this decision. Those statements have been stonewalled by the Army. The military live fire training continued while this burning was going on. The last that I heard was the fire made its way to the old grove 'ōhi'a on Pohakuloa. I've reached out to other people and media, and I haven't seen any traction but I am hoping that you folks can follow up and get some information. A person to contact is the President of the Firefighters Union, Ka'anapu Jacobs. He is trying to get help and attention for this issue. It was just last month where the Army lost control of another fire up at Pohakuloa Girls Scout Camp. I just want to put this on your radar. Mahalo for your time.

Douglas Harrison I have published every article from July 15th to date, articles on HB2024. *Inaudible* He shares the different amounts of money the government has given out over the years for various reasons, such as COVID monies. He speaks on the inflation and how it will spiral. He is an advocate for putting Hawaiian lands into Hawaiian hands. He would like to see this started with the lands of Mauna Kea. He wants to see OHA and DHHL get their fair share of the money.

Announcements

Trustee Akaka One happy announcement in the news yesterday was Miloli'i, the community on Hawai'i Island is now designated as a Community-Based Subsistence Fishing Area. We are very proud that OHA supported this measure.

Adjournment

Trustee Hulu Lindsey Moves to adjourn the meeting.

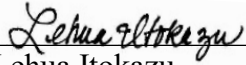
Trustee Akina Seconds the motion.

Adjournment							
TRUSTEE		1	2	'AE (YES)	A'OLE (NO)	KANALUA (ABSTAIN)	EXCUSED
LEINA'ALA	AHU ISA			X			
DAN	AHUNA						X
KALEIHIKINA	AKAKA			X			
KELI'I	AKINA		X	X			
LUANA	ALAPA			X			
BRENDON KALEI'ĀINA	LEE			X			
MILILANI	TRASK						X
JOHN	WAIHE'E						X

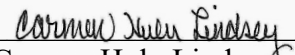
CHAIR CARMEN HULU	LINDSEY	X		X			
TOTAL VOTE COUNT				6			

Chairperson Carmen Hulu Lindsey Adjourns the Board of Trustees meeting at 8:10 p.m.

Respectfully submitted,


 Lehua Itokazu
 Board Secretary

As approved by the Board of Trustees on January 26, 2023.


 Carmen Hulu Lindsey
 Chairperson, Board of Trustees

Attachments:

1. Excused Memo – Trustee Ahuna
2. Excused Memo – Trustee Trask
3. Excused Memo – Trustee Waihe‘e
4. Action Item BOT #22-11: Approval of an OHA Board of Trustees’ Honorary Resolution Honoring the Contributions of Betty Kawohiokalani Ellis Jenkins to the Native Hawaiian Community and the State of Hawaii
5. PP - ‘Ulu‘ulu
6. PP – Kawaiaha‘o Reburial Grant Presentation
7. PP – Healthy Mothers Healthy Babies Coalition of Hawai‘i
8. PP – Neighborhood Board #36



OFFICE OF HAWAIIAN AFFAIRS
Office of Trustee Dan Ahuna
Interoffice Memorandum

Date: August 1, 2022

To: Trustee Hulu Lindsey, Chair
Board of Trustees (BOT)

Trustee Lei Ahu Isa, Vice-Chair
Board of Trustees (BOT)

From: Trustee Dan Ahuna *Dan Ahuna*

Subject: **BOT Meeting Absence – Aug. 4, 2022**

I am unable to attend the BOT meeting scheduled for August 4, 2022. Please extend my excused absence and my sincere apologies to the members of the board.

Mahalo.



OFFICE OF HAWAIIAN AFFAIRS
Trustee Mililani B. Trask
Interoffice Memorandum

Date: August 04, 2022
To: Trustee Hulu Lindsey, Chair – Board of Trustees
From: Trustee Mililani B. Trask
Re: Excuse memo for the O'ahu Community meeting on
Thursday, August 4, 2022

Aloha Chair Lindsey,

Please excuse me from the O'ahu Community meeting on Thursday,
August 4, 2022.

Please extend my excused absence and sincere apologies to the other members
of the board.

Mahalo,

Mililani B. Trask
Trustee, Hawai'i Island

PHONE (808) 594-1888



FAX (808) 594-1868

STATE OF HAWAII
OFFICE OF HAWAIIAN AFFAIRS
560 N. NIMITZ HIGHWAY, SUITE 200
HONOLULU, HAWAII 96817

MEMORANDUM

TO: Trustee Carmen Hulu Lindsey, Chair
Board of Trustees (BOT)

FROM: Trustee John Waihe'e, IV, Member / At-Large

A handwritten signature in black ink, appearing to read "John Waihe'e", written over a horizontal line.

DATE: August 1, 2022

SUBJECT: ATTENDANCE FOR THE 08/04 BOARD OF TRUSTEES (BOT)
SITE VISITS AND BOT MEETING

I am unable to attend the events scheduled for Thursday, 08/04 - which include: 1) site visit to Ka'ala Farms, 2) site visit to the Academy for Creative Media at the University of Hawai'i – West O'ahu, as well as 3) the Board of Trustees Meeting also at the university.

This memo serves as a request to be EXCUSED from these three agenda-filed events.

Please extend my apologies to the rest of the Board of Trustees.

Mahalo.

cc: Trustee Kaleihikina Akaka, Member / O'ahu



ACTION ITEM
Board of Trustees
August 4, 2022

BOT #22-11

Action Item Issue: **Approval of an OHA Board of Trustees' Honorary Resolution Honoring the Contributions of Betty Kawohiokalani Ellis Jenkins to the Native Hawaiian Community and the State of Hawai'i**

Prepared by:

A handwritten signature in black ink, appearing to read 'Sylvia M. Hussey'.

Jul 29, 2022

Sylvia M. Hussey, Ed.D.
Ka Pouhana, Chief Executive Officer

Date

Reviewed by:

A handwritten signature in black ink, appearing to read 'Carmen Hulu Lindsey'.

Jul 29, 2022

Trustee Carmen Hulu Lindsey
Ke Kauhuhu o ke Kaupoku, Chairperson, Board of Trustees

Date

Action Item BOT #22-11: Approval of an OHA Board of Trustees' Honorary Resolution Honoring the Contributions of Betty Kawohiokalani Ellis Jenkins to the Native Hawaiian Community and the State of Hawai'i

I. Proposed Action

The Office of Hawaiian Affairs, Board of Trustees approves an honorary resolution honoring the contributions of Betty Kawohiokalani Ellis Jenkins to the Native Hawaiian Community and the State of Hawai'i, as attached.

II. Issue

Whether (or not) the Office of Hawaiian Affairs ("OHA"), Board of Trustees ("BOT") should approve the attached honorary resolution.

III. Discussion

Betty Kawohiokalani Ellis Jenkins was born on February 11, 1928, to Richmond Kaliko Ellis and Elizabeth Nalani Mersberg Spencer McMillan Ellis on Hawai'i Island, a first born of a first born of a first born. She graduated from Kamehameha Schools in 1945, then went on to become the first student of color to attend Muskingum College, now known as Muskingum University, in Ohio; and enjoyed a successful career as an elementary school teacher in Ohio, California, Micronesia, Guam and Hawai'i, earning and embracing her sobriquet "Aunty Betty".

Aunty Betty championed a code of ethics she developed known as "The 4Bs – Believe, Behave, Belong and Become" into which were integrated elements of 'ōlelo Hawai'i, tradition, history, cultural values, education, and mentorship.

She served as the alaka'i for the Office of Hawaiian Affairs' (OHA) Kūpuna Team, representing OHA at educational and cultural functions and developing the Ho'olauna Series in coordination with the Department of Veteran Affairs and the Department of Defense, which focused on providing services to veterans and military personal.

Aunty Betty served Papa Ola Lōkahi as an advisor to many of its programs including the Pacific Diabetes Education Program, the 'Imi Hale – Native Hawaiian Cancer Network, the Native Hawaiian Health Care Systems' Institutional Review Board, the Native Hawaiian Veterans Project and Papa Ola Lōkahi's traditional healing program, delivering presentations on Hawaiian values, culture and beliefs for practitioners and providers and later as an esteemed hulu kupuna who continued to provide inspiration, encouragement and guidance.

She was one of the pillars of the North Shore community and active in protecting Waimea from further development in the early 2000s. In 2001 she was appointed by the City and County of Honolulu as the Cultural, Historical and Educational Chairperson for the Waimea Falls Park Master Plan. Her work as Cultural, Historical and Educational Chairperson provided the foundation for the Valley as a major cultural and educational site. Throughout her life, she remained true and faithful to herself as a Native Hawaiian mana wahine, kupuna and member of the Waimea Valley Ahu Advisory Group from the examples she set of her commitment to community, protection of culturally significant

Action Item BOT #22-11: Approval of an OHA Board of Trustees' Honorary Resolution Honoring the Contributions of Betty Kawohiokalani Ellis Jenkins to the Native Hawaiian Community and the State of Hawai'i

places, and sharing of her 'ike and mana'o in order to bring about important changes to uplift and support Waimea Valley.

She is recognized for her lifelong contributions to the Native Hawaiian community and the state of Hawai'i, Betty Kawohiokalani Ellis Jenkins received numerous awards and accolades including the Papa Ola Lōkahi Ka'ōnohi Award, the Office of Hawaiian Affairs Kupuna Alaka'i Award, the Native Hawaiian Education Council Award, the Honpa Hongwanji Living Treasures Award, the Association of Hawaiian Civic Clubs Kukui Lama Kū Award, the Kamehameha Schools 100th Anniversary Alumni Recognition Award, the North Shore Chamber of Commerce 2011 Kama'āina of the Year Award, the A Hui of Hawaiian Royal Societies Ali'i Kalani Award, and recognition awards from both the House and Senate of the Hawai'i State Legislature.

IV. Recommendation

To approve an honorary resolution honoring the contributions of Betty Kawohiokalani Ellis Jenkins to the Native Hawaiian Community and the State of Hawai'i, as attached.

V. Alternative Actions

- A.** To not approve Administration's recommended honorary resolution
- B.** To approve an amended version of Administration's recommended honorary resolution

VI. Funding

No funding is required.

VII. Timeframe

Immediate action is recommended.

VIII. Attachment - A RESOLUTION OF THE OFFICE OF HAWAIIAN AFFAIRS HONORING THE CONTRIBUTIONS OF BETTY KAWOHIOKALANI ELLIS JENKINS TO THE NATIVE HAWAIIAN COMMUNITY AND THE STATE OF HAWAI'I

**A RESOLUTION OF THE OFFICE OF HAWAIIAN AFFAIRS
HONORING THE CONTRIBUTIONS OF BETTY KAWOHIOKALANI ELLIS JENKINS TO
THE NATIVE HAWAIIAN COMMUNITY AND THE STATE OF HAWAI'I**

WHEREAS, Betty Kawohiokalani Ellis Jenkins was born on February 11, 1928, to Richmond Kaliko Ellis and Elizabeth Nalani Mersberg Spencer McMillan Ellis on Hawai'i Island, a first born of a first born of a first born; and,

WHEREAS, Betty Kawohiokalani Ellis Jenkins graduated from Kamehameha Schools in 1945, then went on to become the first student of color to attend Muskingum College, now known as Muskingum University, in Ohio; and,

WHEREAS, Betty Kawohiokalani Ellis Jenkins enjoyed a successful career as an elementary school teacher in Ohio, California, Micronesia, Guam and Hawai'i, earning and embracing her sobriquet "Aunty Betty;" and,

WHEREAS, while with the Hawai'i State Department of Education, Betty Kawohiokalani Ellis Jenkins directed the Hālau o Hale'iwa Hawaiian Studies Program at Hale'iwa Elementary for eight years, and implemented a new teaching program called "3-on-2" in which two classrooms were combined and taught by three teachers; and,

WHEREAS, Betty Kawohiokalani Ellis Jenkins championed a code of ethics she developed known as "The 4Bs – Believe, Behave, Belong and Become" into which were integrated elements of 'ōlelo Hawai'i, tradition, history, cultural values, education, and mentorship; and,

WHEREAS, Betty Kawohiokalani Ellis Jenkins went on to serve as the alaka'i for the Office of Hawaiian Affairs' (OHA) Kūpuna Team, representing OHA at educational and cultural functions and developing the Ho'olauna Series in coordination with the Department of Veteran Affairs and the Department of Defense, which focused on providing services to veterans and military personal; and,

Action Item BOT #22-11: Approval of an OHA Board of Trustees' Honorary Resolution Honoring the Contributions of Betty Kawohiokalani Ellis Jenkins to the Native Hawaiian Community and the State of Hawai'i **Attachment**

WHEREAS, requests for Auntie Betty's OHA workshops were in demand locally and nationally from state and federal agencies, Hawaiian civic clubs and various Hawaiian groups and organizations; and,

WHEREAS, Betty Kawohiokalani Ellis Jenkins generously served Papa Ola Lōkahi as an advisor to many of its programs including the Pacific Diabetes Education Program, the 'Imi Hale – Native Hawaiian Cancer Network, the Native Hawaiian Health Care Systems' Institutional Review Board, the Native Hawaiian Veterans Project and Papa Ola Lōkahi's traditional healing program, delivering presentations on Hawaiian values, culture and beliefs for practitioners and providers and later as an esteemed hulu kupuna who continued to provide inspiration, encouragement and guidance; and,

WHEREAS, Betty Kawohiokalani Ellis Jenkins engaged in cultural exchanges and maintained meaningful relationships with elders from other Indigenous communities, including active panel participation for 10 years in the Wisdom of the Elders session of the American Indian Alaska Native Native Hawaiian Caucus of the American Public Health Association at their annual convention; and,

WHEREAS, for her lifelong commitment to education and to 'ike kupuna, Betty Kawohiokalani Ellis Jenkins was bestowed an Honorary Doctorate for Indigenous Elders in 2016 by the World Indigenous Nations University; and,

WHEREAS, Betty Kawohiokalani Ellis Jenkins engaged with many international, national and local organizations to promote Hawaiian cultural values, beliefs and practices including the Life Foundation, Haudenosaunee Nation, Hawaiian Civic Clubs and her favorite North Shore O'ahu community groups; and,

WHEREAS, Betty Kawohiokalani Ellis Jenkins was one of the pillars of the North Shore O'ahu community and active in protecting Waimea Valley from further development in the early 2000s; in 2001 she was appointed by the City and County of Honolulu as the Cultural, Historical and Educational Chairperson for the Waimea Falls Park Master Plan, providing the foundation for Waimea Valley as a major cultural and educational site; and

Action Item BOT #22-11: Approval of an OHA Board of Trustees' Honorary Resolution Honoring the Contributions of Betty Kawohiokalani Ellis Jenkins to the Native Hawaiian Community and the State of Hawai'i Attachment

WHEREAS, throughout her life, Betty Kawohiokalani Ellis Jenkins remained true and faithful to herself as a Native Hawaiian mana wahine, kupuna and member of the Waimea Valley Ahu Advisory Group from the examples she set of her commitment to community, protection of culturally significant places, and sharing of her 'ike and mana'o in order to bring about important changes to uplift and support Waimea Valley; and

WHEREAS, for her lifelong contributions to the Native Hawaiian community and the state of Hawai'i, Betty Kawohiokalani Ellis Jenkins received numerous awards and accolades including the Papa Ola Lōkahi Ka'ōnohi Award, the Office of Hawaiian Affairs Kūpuna Alaka'i Award, the Native Hawaiian Education Council Award, the Honpa Hongwanji Living Treasures Award, the Association of Hawaiian Civic Clubs Kukui Lama Kū Award, the Kamehameha Schools 100th Anniversary Alumni Recognition Award, the North Shore Chamber of Commerce 2011 Kama'āina of the Year Award, the A Hui of Hawaiian Royal Societies Ali'i Kalani Award, and recognition awards from both the House and Senate of the Hawai'i State Legislature; and

WHEREAS, the Office of Hawaiian Affairs mourns the loss of Betty Kawohiokalani Ellis Jenkins, an extraordinary hulu kupuna, educator, cultural practitioner, mentor, role model and advocate; and,

WHEREAS, the Office of Hawaiian Affairs embraces Betty Kawohiokalani Ellis Jenkins' moral code and legacy of excellence, devotion, ambience and style and her aloha for all and respect for 'ike kupuna; and,

WHEREAS, the Office of Hawaiian Affairs will strive for the wellbeing of Kanaka Maoli in loving memory of Betty Kawohiokalani Ellis Jenkins; and,

NOW, THEREFORE, BE IT RESOLVED, the undersigned duly recognized as the board chair and trustees of the Office of Hawaiian Affairs, on the 4th day of August 2022, do set forth their hand to recognize, honor and memorialize the life of Betty Kawohiokalani Ellis Jenkins; and

ADOPTED, this 4th day of August 2022, island of O'ahu, State of Hawai'i, by the Board of Trustees of the Office of Hawaiian Affairs in its regular meeting assembled.



Celebrating 10 Years of Community Archive Partnerships



UNIVERSITY of HAWAII
WEST OAHU

Our Time Today

- Overview of 'Ulu'ulu
- Demonstration of Website and Research Process
 - Papakilo Database Project Highlights
 - Papakilo 10th Anniversary Video





‘ULU‘ULU

The Henry Ku‘ualoha Giugni Moving Image Archive of Hawai‘i

uluulu.hawaii.edu

‘ULU‘ULU is a Hawaiian word meaning collections, assembly, or gathering. Our archive is not just a collection of moving image items, but also an assembly of voices, communities and stories; a gathering place for people to share Hawai‘i’s culture, traditions and collective memory.

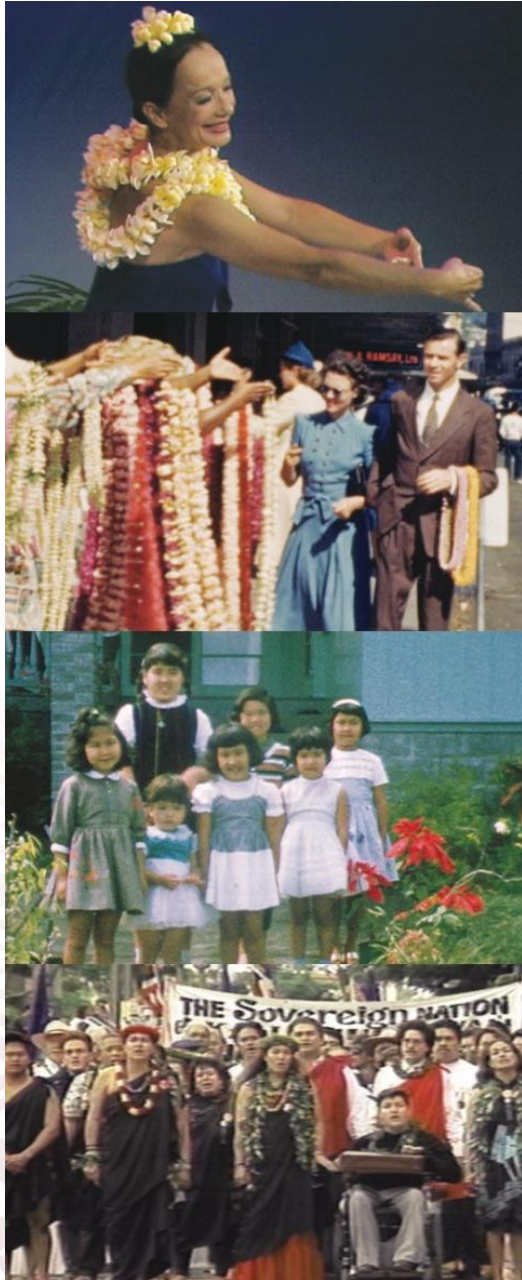
Janel Quirante
Head Archivist
quirante@hawaii.edu



Hawai‘i's official state archive for moving images



UNIVERSITY
of HAWAII
WEST O‘AHU



OUR MISSION is to perpetuate and share
the rich moving image heritage of Hawai'i
through the preservation of film
and videotape related to the history
and culture of Native Hawaiians
and the people of Hawai'i.



The 'Ulu'ulu Crew



Heather Giugni
Collections Specialist
Producer
Founder



Janel Quirante
Head Archivist



Robbie Omura
Media Specialist



Koa Luke
Assistant Archivist
Cataloger



Hoku Ka'aha'aina
Assistant Archivist
Processing



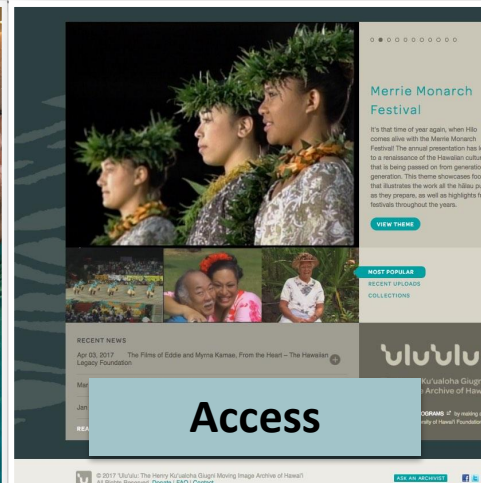
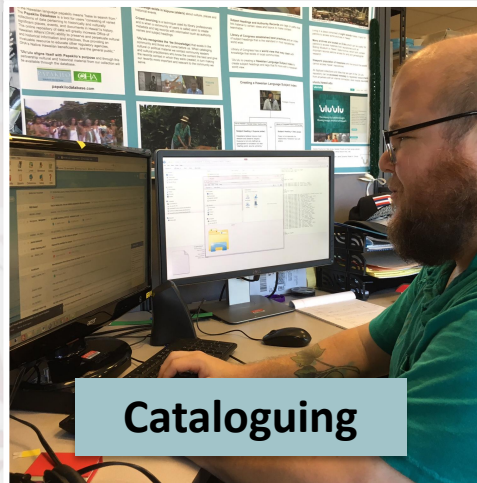
Tisha Aragaki
Assistant Archivist
Reference/Outreach



Haunani Haia
Project Assistant



What Is a Moving Image Archive?



Collection Scope

- Created in Hawai'i
- About Hawai'i
- From 1920s – 2000s
- Unique, primary source material
- 70 permanent collections
- 50,000 videotapes and films
- 6,015 reels digitized
- 2,851 hours of footage digitized
- 260TB of digital preservation masters
- 3,241 catalog records and clips online
- 957 catalog records and clips on Papakilo Database



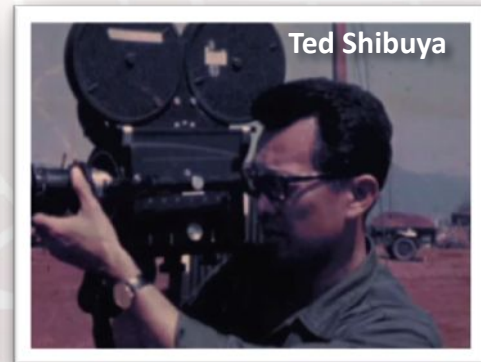
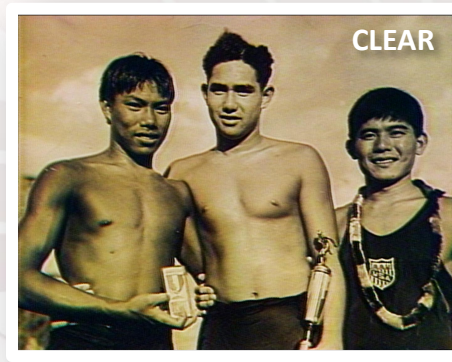
As of June 2021



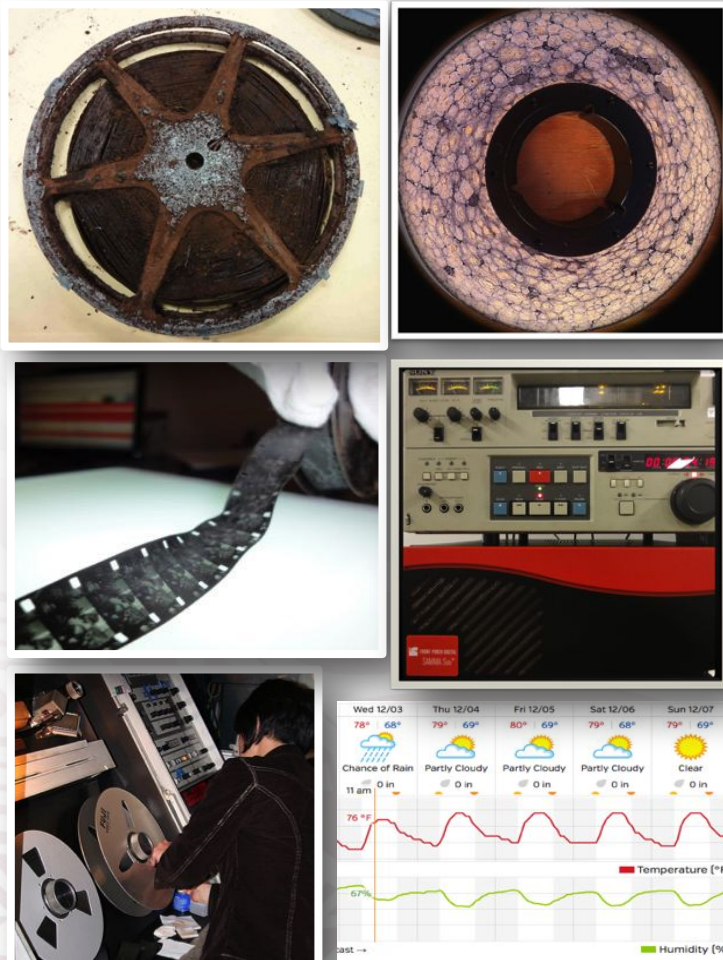
UNIVERSITY
of HAWAII
WEST O'AHU

Collection Highlights

- Alexander and Baldwin Sugar Museum
- Bernice Pauahi Bishop Museum
- Center for Labor Education and Research
- Don Ho
- Filipino - American Historical Society of Hawai'i
- Friends of 'Iolani Palace
- Hawai'i Council for the Humanities
- Hawaiian Airlines
- Hawaiian Electric Company
- Hawaiian Legacy Foundation
- KGMB-TV
- KHET PBS Hawai'i
- KHON
- KITV
- Kamehameha Schools
- Nā Maka o ka 'Āina
- Office of Hawaiian Affairs
- Pacific Islanders in Communications
- Protect Kaho'olawe 'Ohana
- U.S. Senator Daniel K. Inouye
- Victoria Keith Productions



Preservation



CHALLENGES

RARE AND OBSOLETE FORMATS

2" Quad | ½" EIAJ | ¾" U-matic

PHYSICAL DAMAGE AND DETERIORATION

Mold | Vinegar syndrome | Shrinkage

ENVIRONMENTAL

High temperature | High Humidity

DIGITIZATION

Uncompressed masters | Streaming



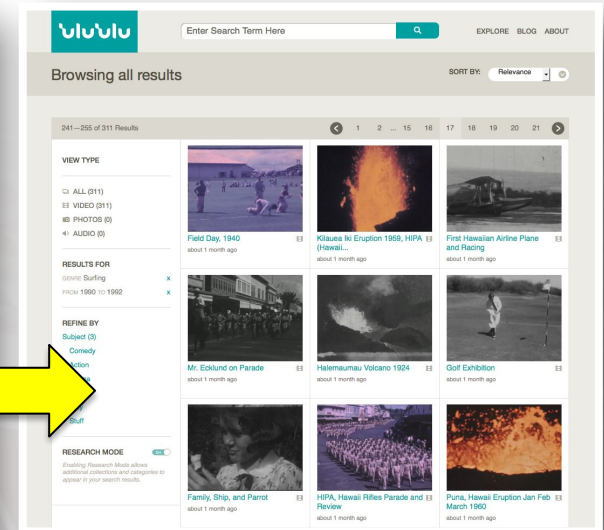
UNIVERSITY
of HAWAII
WEST O'AHU

Digitization

50,000+ Analog Reels

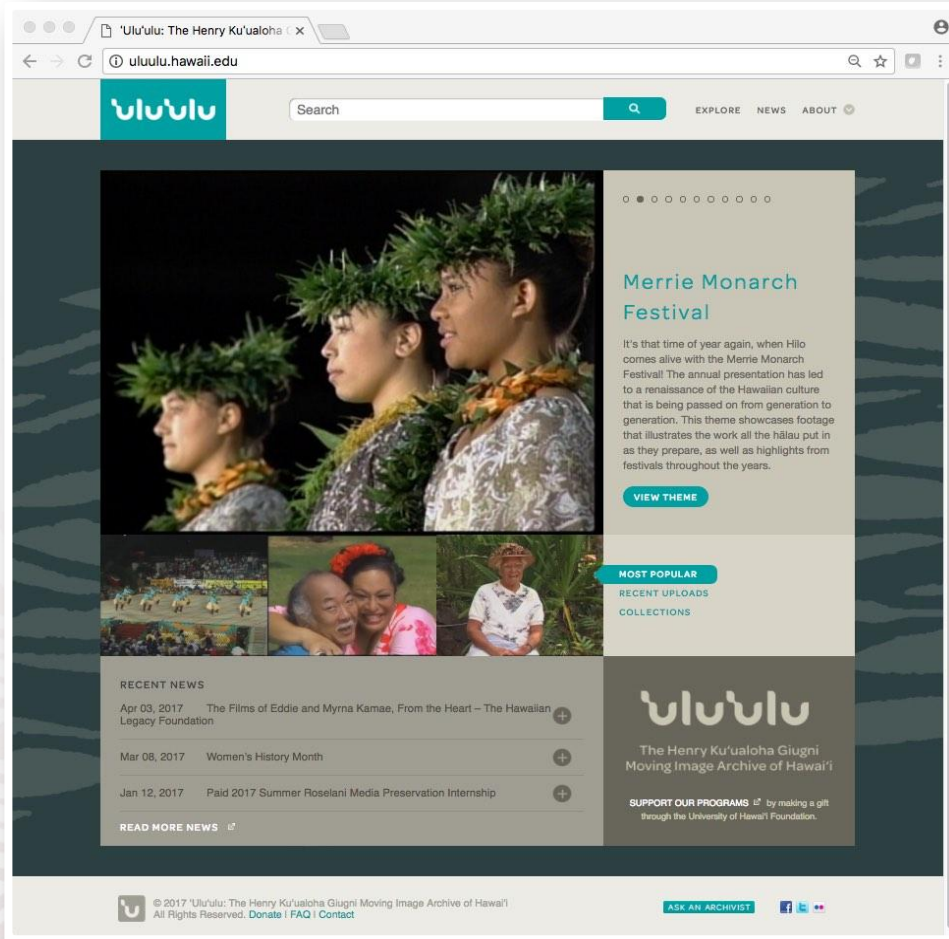
Migration to Digital
Preservation Masters

Access to Video Online



UNIVERSITY
of HAWAII
WEST O'AHU

Access and Outreach



Website and Online Catalog



UNIVERSITY
of HAWAII
WEST O'AHU

Research at papakilodatabase.com

Explore and Browse

- 957 records with videos

Keyword Searching

- "Makaha"

Results List

- Digitized Footage on uluulu.hawaii.edu

SEARCH BY COLLECTION

 ...

You may customize your search by selecting any number of collections below.

- | | |
|---|---|
| <input type="checkbox"/> Ali'i Letter Collection ⓘ | <input type="checkbox"/> Māhele 'Āina Index ⓘ |
| <input type="checkbox"/> Bishop Museum Collections ⓘ | <input type="checkbox"/> Maps (OHA) ⓘ |
| <input type="checkbox"/> Collections Outside of Hawai'i ⓘ | <input type="checkbox"/> Multimedia (OHA) ⓘ |
| <input type="checkbox"/> Genealogy Indexes (ULUK) ⓘ | <input type="checkbox"/> Newspapers ⓘ |
| <input type="checkbox"/> Hawai'i State Archives Collection ⓘ | <input type="checkbox"/> Place Names (ULUK) ⓘ |
| <input type="checkbox"/> Hawaiian Mission Houses ⓘ | <input type="checkbox"/> Reports ⓘ |
| <input type="checkbox"/> Hawaiian National Bibliography (AWA) ⓘ | <input type="checkbox"/> Ulukau.org ⓘ |
| <input type="checkbox"/> Historic Sites Databases ⓘ | <input type="checkbox"/> Uncategorized (OHA) ⓘ |
| <input type="checkbox"/> Hula Preservation Society ⓘ | <input type="checkbox"/> Washington Place's Lili'uokalani Digital Archive ⓘ |
| <input type="checkbox"/> Kipuka ⓘ | <input checked="" type="checkbox"/> 'Ulu'ulu (ULU) ⓘ |

<https://www.papakilodatabase.com/>



UNIVERSITY
of HAWAII
WEST O'AHU

Research at uluulu.hawaii.edu

1. SEARCH



uluulu.hawaii.edu

2. SELECT TITLE(S)



3. REQUEST

ASK AN ARCHIVIST



4. REGISTER

uluulu
University of Hawaii
West Oahu

Remember Registration Form

Name _____ Date _____
Address (Street, City, State, ZIP) _____ Phone No. _____
Email _____

Researcher Affiliation & History (Fill in one only)

<input type="checkbox"/> I am a...	<input type="checkbox"/> I am a...	<input type="checkbox"/> I am a...
<input type="checkbox"/> I am a...	<input type="checkbox"/> I am a...	<input type="checkbox"/> I am a...

Statement of Research Topic: _____

Intended Use of Research (check all that apply):

<input type="checkbox"/> Academic	<input type="checkbox"/> Academic	<input type="checkbox"/> Academic	<input type="checkbox"/> Academic
<input type="checkbox"/> Other	<input type="checkbox"/> Other	<input type="checkbox"/> Other	<input type="checkbox"/> Other

Use of information about your research:

May we use this information in our newsletter? ☐ Yes ☐ No
May we include you in our future news stories? ☐ Yes ☐ No

Other information about the registration: _____

Special authorization for publication or other use of the collection must be obtained from the University of Hawaii. No reproduction or other use of the collection is permitted without the express written permission of the University of Hawaii. The University of Hawaii is not responsible for the content of the collection. The University of Hawaii is not responsible for the content of the collection. The University of Hawaii is not responsible for the content of the collection.

I have read the Rules & Regulations for use of materials and agree to abide by them.
Signed _____
Archivist Date _____

5. WATCH



UNIVERSITY
of HAWAII
WEST O'AHU

Research at uluulu.hawaii.edu

1. SEARCH



uluulu.hawaii.edu

Explore and Browse

- Themes
- Collections

Keyword Searching

- "Makaha"
- "Nanakuli"

Results List

- Digitized Footage



UNIVERSITY
of HAWAII
WEST O'AHU

Research at uluulu.hawaii.edu

2. SELECT TITLE(S)



Title Page

- Description
- Technical Metadata
- Collection and Subcollection
- Short Clip



Island Music, Island Hearts : Makaha Sons of Ni'ihau


Makaha sons of Ni'ihau perform on Island Music, Island Hearts. Includes the songs: Kaho'olawe, Hualālai, Keala, Hali'ilua, Moku Kia Kahi, Alaka'i,...

Duration:01:01:37



UNIVERSITY
of HAWAII
WEST O'AHU

Research at uluulu.hawaii.edu



Contact

'Ulu'ulu

UHWO Library First Floor
91-1001 Farrington Highway
Kapolei, HI 96707

phone: 808.689.2740
e-mail: uluulu [at] hawaii [dot] edu

Ask an Archivist

Fill out all fields in the form below to ask an archivist a question p Fields marked with an asterisk (*) are required

Full Name *

Email *

Phone Number

What do you want to ask? *

SUBMIT

3. REQUEST

ASK AN ARCHIVIST



- Questions
- Additional Research
- Full-length Footage
- Response in 24 Hours



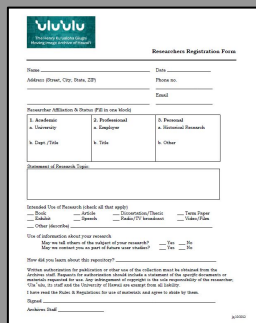
UNIVERSITY
of HAWAII
WEST O'AHU

Research at uluulu.hawaii.edu

One Simple Form

- Contact Information
- Copyright Disclaimer
- One Year Access to Streaming Videos

4. REGISTER



The screenshot shows the 'uluulu Researcher Registration Form'. It includes fields for Name, Address (Street, City, State, ZIP), Phone No., Email, and Date. Below these are checkboxes for 'Researcher Affiliation & Status (P/E in one word)' with options: I. Academic, II. Professional, III. Personal, IV. Non-Profit, V. Other. There is a section for 'Statement of Research Topic' and a table for 'Intended Use of Research (check all that apply)' with columns for 'Public', 'Academic', 'Commercial/Other', 'Teaching', and 'Other'. The form also contains a 'Use of Information about your research' section and a 'Statement of Research Topic' section. The form is dated 1/1/2011.



UNIVERSITY
of HAWAII
WEST O'AHU

Research at uluulu.hawaii.edu

Video On Demand

- Streaming on Viddler
- Access to 4 Hours of Videos for 2 Weeks
- Course Reserves for Teachers



OHA Papakilo Database Preservation Project

3 year project (2018 – 2021)

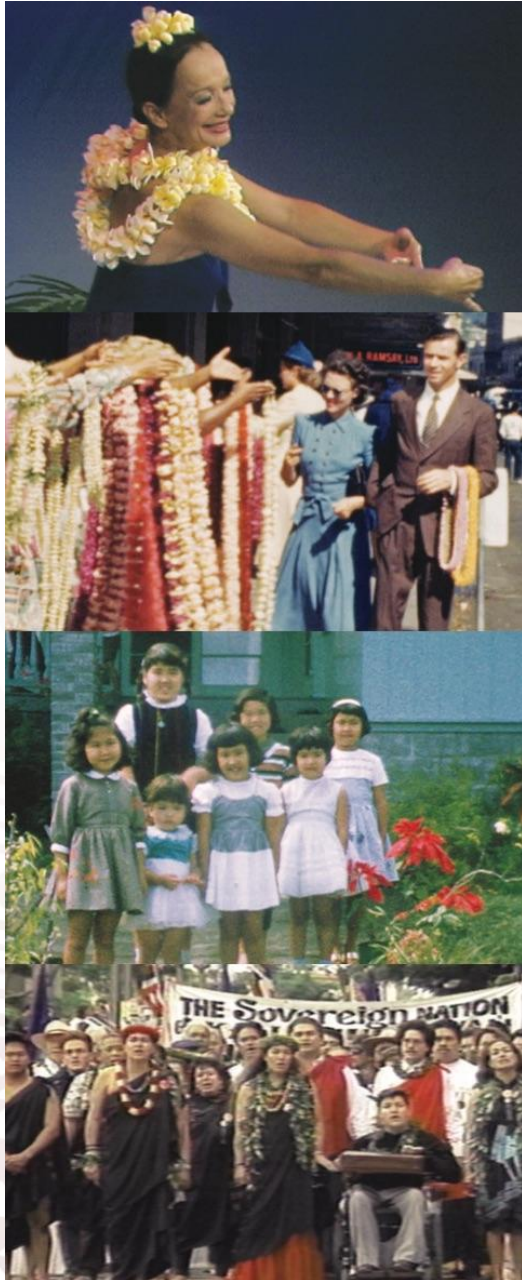
Original recordings circa 1970s - 1990s

532 videotapes digitized

298 hours of footage

30.3 TB of preservation files

298 titles with clips online



UNIVERSITY
of HAWAII
WEST O'AHU

OHA Papakilo Database Preservation Project

Merrie Monarch Festival

Treasures

Pau Hana Years

Legacy of Light

Holo Mai Pele



Pau Hana Years :
Grandmother's Trunk Project



Pau Hana Years : Pauline
Kekahuna



Pau Hana Years : Hobbies of
Kauai's Kupuna



Pau Hana Years : Tribute to
Hilo Hattie



Pau Hana Years : Charles and
Sunhild Hampson



Pau Hana Years : Freeman
Lang part 1 8/29/73



Pau Hana Years : Songs and
Dances from the Seniors of
Kalihi-Pālana 8/13/79



Pau Hana Years : Kinau Wilder



Pau Hana Years : Kona
Hospital; 1975



Pau Hana Years : Sammy
Amato; 1976



Pau Hana Years : Good Ole
Days 3/4/76



Pau Hana Years : Molokai
Potato Farm

2020 Digital Preservation Highlight Reel



UNIVERSITY
of HAWAII
WEST O'AHU



UNIVERSITY of HAWAII
WEST OAHU

Grant for the Reburial of 700-900 Iwi Kūpuna & Moepū Disturbed at Kawaiaha‘o Church

**OHA Board of Trustees Community Meeting
5 August 2022**













Grant Update

- O‘ahu Island Burial Council approved the Joint Burial Treatment Plan by the Church and Recognized Descendants in June 2022
- The Church hired Hawaiian Dredging and CSH to implement the Joint Burial Treatment Plan
- Two existing lawsuits are being reconciled and dismissed to pave the way for the reburial to occur
- Grant funds are and will be used for interisland travel by recognized descendants; for reburial materials for those pū‘olo moe that will be re-wrapped due to concerns over the materials originalled used; and for the reburial ceremony
- It is important to acknowledge that this is not the first time Kawaiaha‘o Church moved iwi kūpuna from its grounds, but God willing, it will be the last. In the righteous pursuit of reconciliation, we must find the courage to forgive and seek to restore the balance once existing at Kawaiaha‘o.

Grant Update (Con't)

- The original sin, the disturbance of over 700 kūpuna over the objections of the family, must be acknowledged in order to achieve atonement and facilitate the release of the immense kaumaha. The first ho‘oponopono meeting was held in February 2020 and went well. These efforts need to continue.
- By replanting the iwi kūpuna where they lay originally, by asking for their and our forgiveness, and asking that they take our pain and anguish with them, only then will we be able to collectively heal.



healthymothers
healthybabies

COALITION OF HAWAII

PROGRAMMATIC UPDATES

hmhb-hawaii.org

(808) 737-5805

245 N Kukui St., Suite 102A

Honolulu, HI

20
22

UPDATES BY PROGRAM

JULY 1, 2021 - JUNE 30, 2022

ALL LIFETIME NUMBERS ARE UP TO JUNE 2022



VACCINATION EFFORTS

Services Started in July 2021

FY21-22

738 Total Visits Conducted

Includes prenatal visits, postpartum visits, lactation consultations, mental health therapy, and COVID testing

COVID-19 VACCINES

1815+ doses administered

Includes Pfizer, Modern, and J&J doses

FLU VACCINES

250+ doses administered (limited quantity)



Launched in 2013

LIFETIME

1678+ pack-n-plays distributed

FY21-22

178+ pack-n-plays distributed

COMMUNITY-BASED DOULA PROGRAM

Launched in September 2020

LIFETIME

82 total clients served

FY21-22

39 total clients served



Launched in 2017

LIFETIME

42 groups, 265 families participated

FY21-22

5 groups, 36 families participated

MĀNA 'AI FOOD DISTRIBUTION

LIFETIME

37,500+ meals & provisions delivered

FY21-22

200+ meals & provisions delivered

RENTAL ASSISTANCE

Partnered with CCH since August 2020

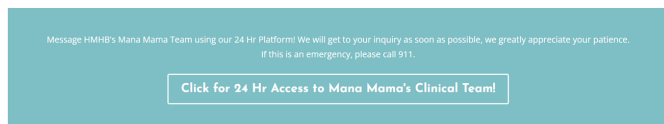
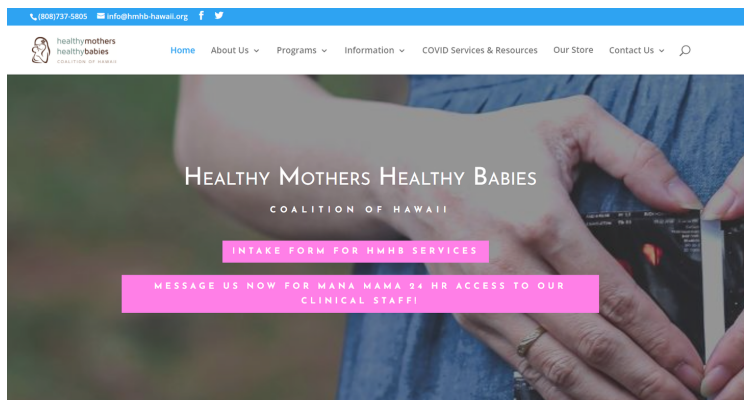
LIFETIME

732 applications approved

FY21-22

532 applications approved

Calls, Website & Social Media



OUR PROGRAMS & SERVICES



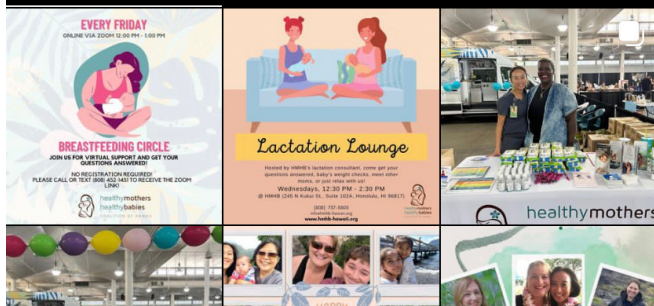
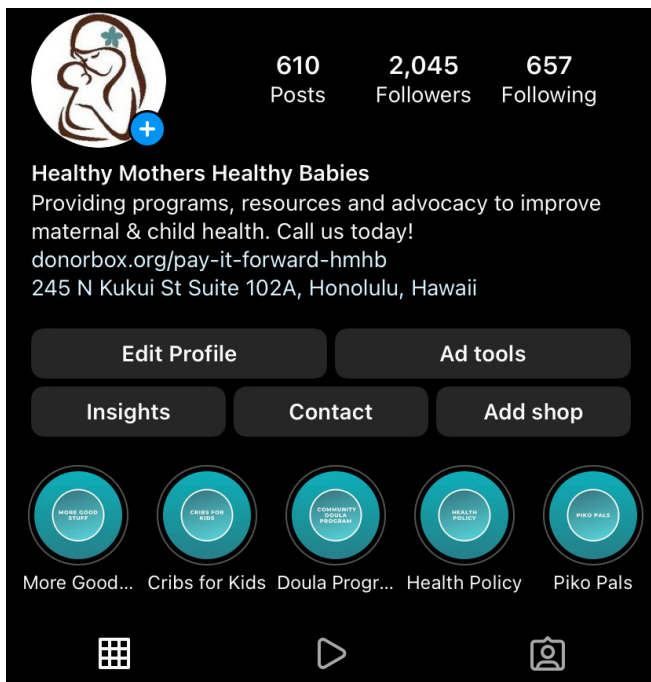
"Hawaii's Cribs for Kids," a safe sleep education course, for low-income, high-risk pregnant women and their families.



Mana Mama is a community-based midwifery model of care reaching people of...



Piko Pals connects and empowers new parents of babies age 0-4 months to build their own village through facilitated discussions in an emotionally and...



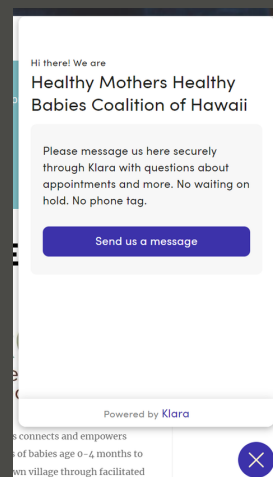
HMHB WEBSITE

23,076 Sessions

17,161 Users (73.9% New Visitors, 26.1% Returning Visitors)

42,541 Pageviews

250 Patients Engaged via the Mana Mama 24-Hour Telehealth Platform



INSTAGRAM

2,045 Followers

FACEBOOK

3,389 Followers

3,091 Likes

CALLS

1,156 calls, on average, received/made per month
35 calls received/made per day

Total of approximately 14,000 calls in FY21-22

NATIVE HAWAIIANS & HAWAIIANS IN NANAKULI-MAILI

Our Homes, Schools, Jobs,
Opportunities & Challenges

- Our Election Districts & Our Current Elected Officials
- DHHL Land: Nanakuli, Maili and Lualualei.
 - Why we have the highest concentration of native Hawaiians in the world.
- Schools in Nanakuli & Maili
- Economic Stability – Jobs & Business Opportunities
- Challenges & Concerns

OUR ELECTION DISTRICTS

Our Current Elected Officials

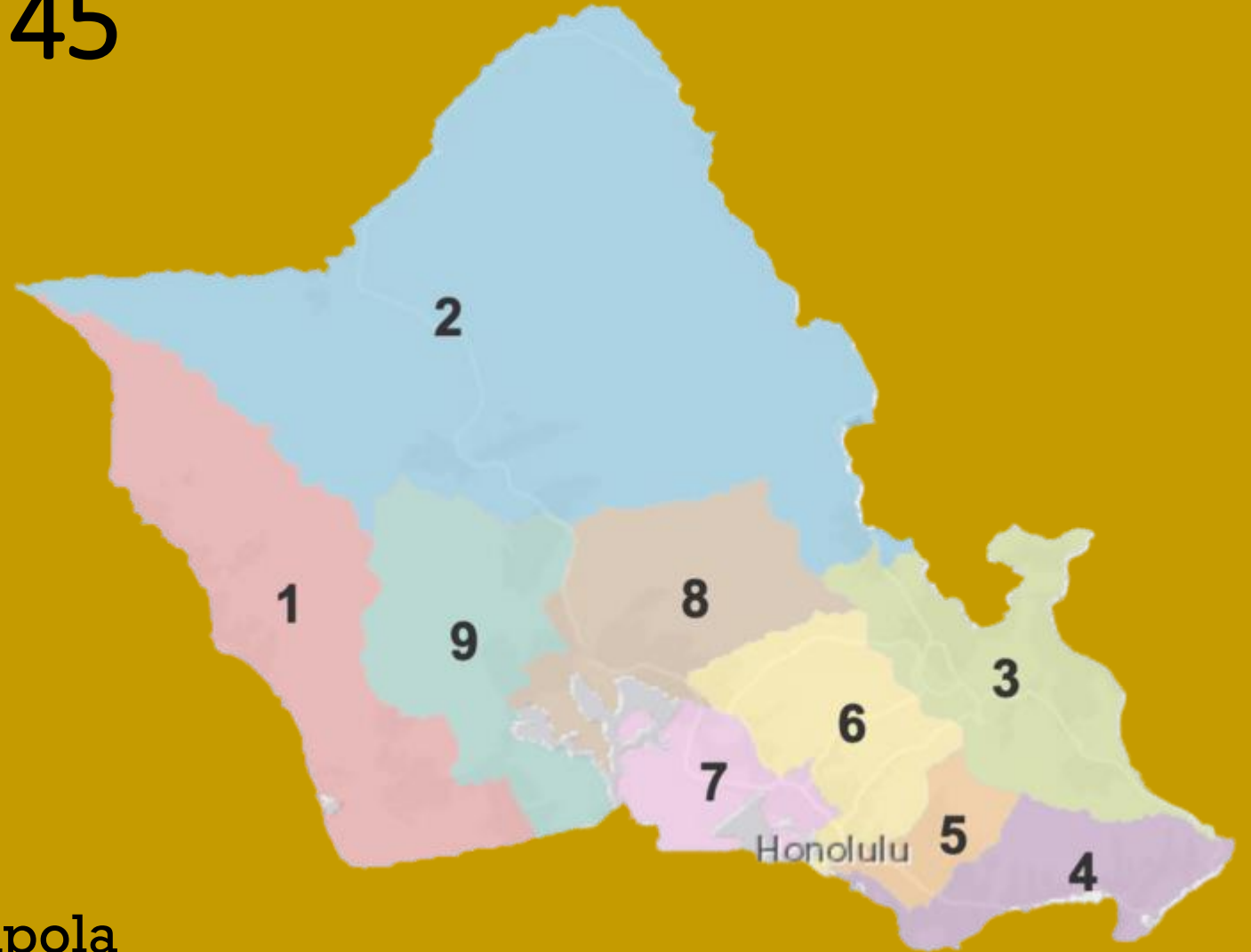
36 =

1 > 22 > 44 > 45

36 = 1 > 22 > 44 > 45

**CITY
COUNCIL
DISTRICT 1**

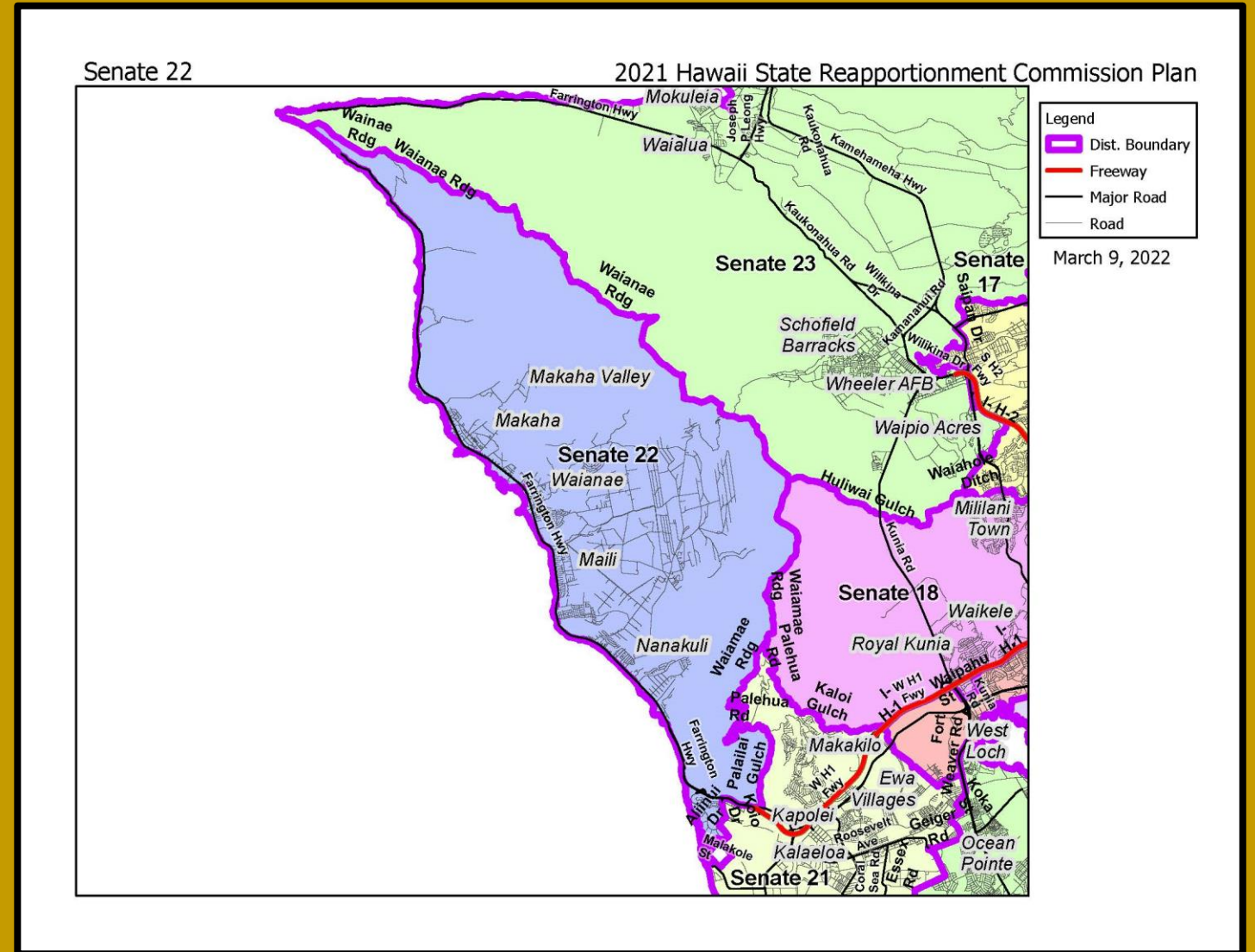
Councilwoman Andria Tupola



36 = 1 > 22 > 44 > 45

STATE SENATE DISTRICT 22

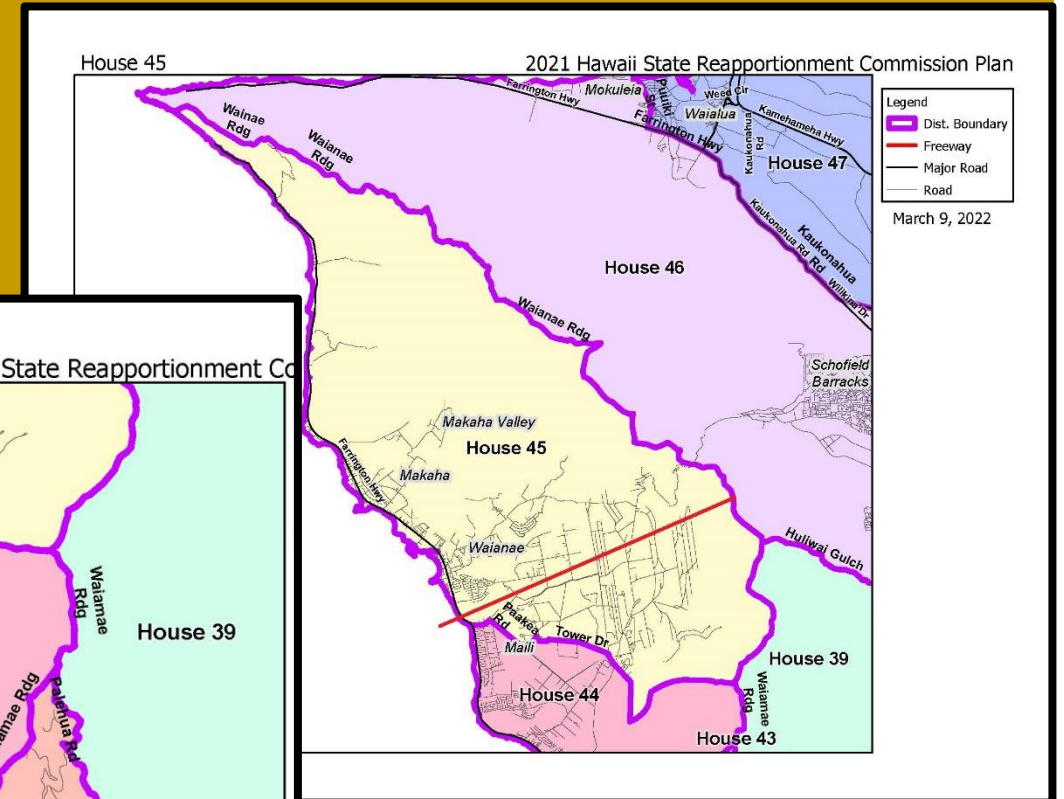
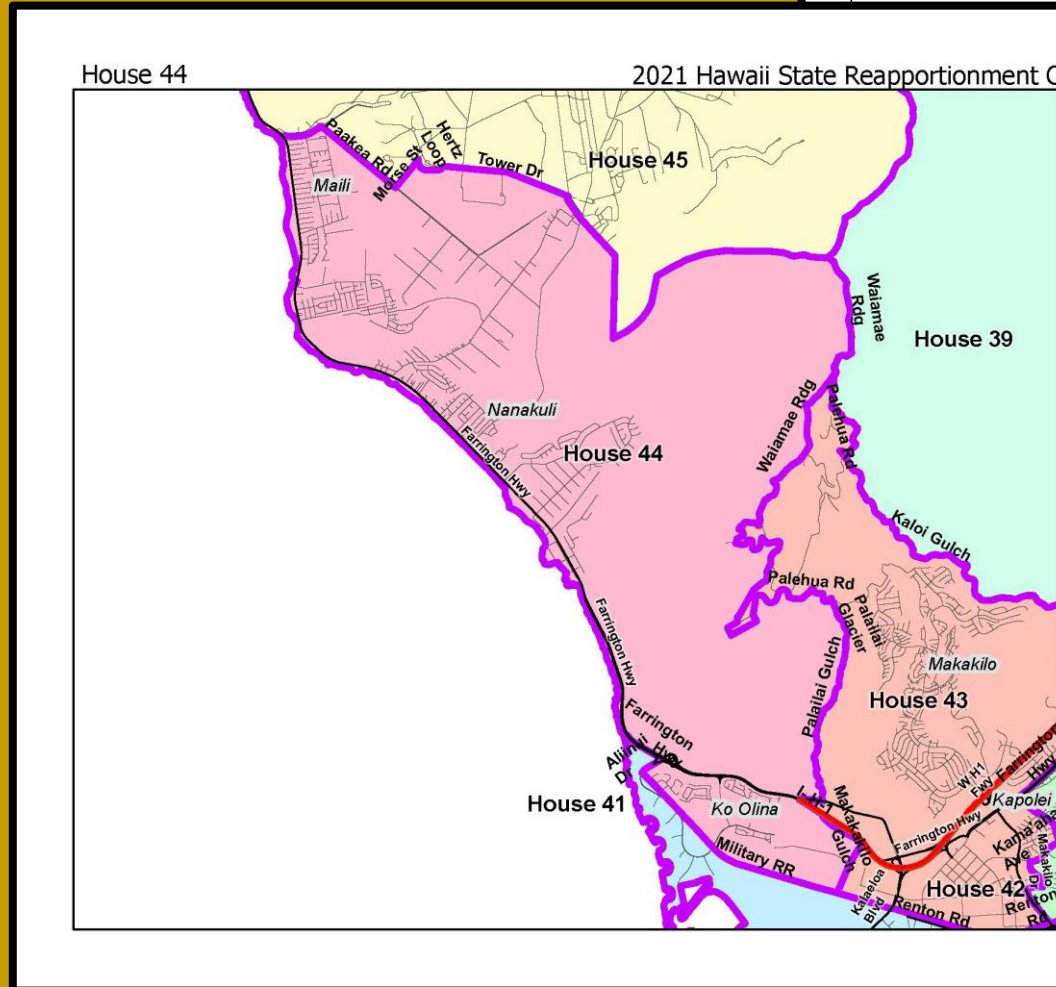
Senator Maile Shimabukuro



36 = 1 > 22 > 44 > 45

HOUSE DISTRICTS 44 & 45

House
Representative #44
Stacie Eli



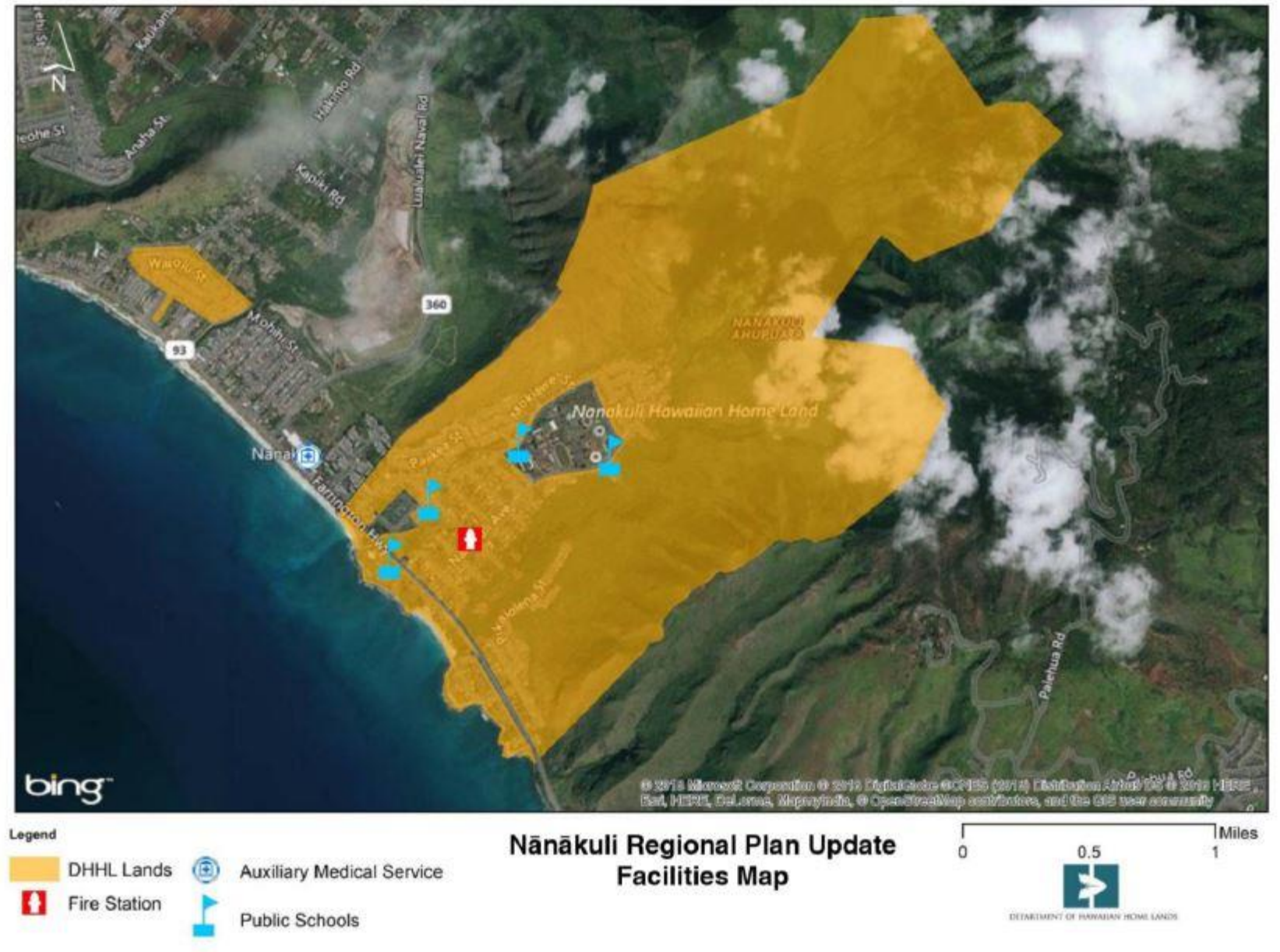
House
Representative #45
Cedric Gates

DHHL LAND:

Nanakuli, Maili, and Lualualei

**Why we have the highest concentration of native
Hawaiians in the world.**

- Nanakuli Hawaiian Homestead
 - 1,045 residential leases
- Princess Kahanu Estates
 - 270 residential leases
- TOTAL: 1,315
- 30% of the 4,370 residential leases Oahu-wide
- 16% of the 8,477 residential leases State-wide



DHHL RESIDENTIAL LEASES

8,478 residential leases Statewide

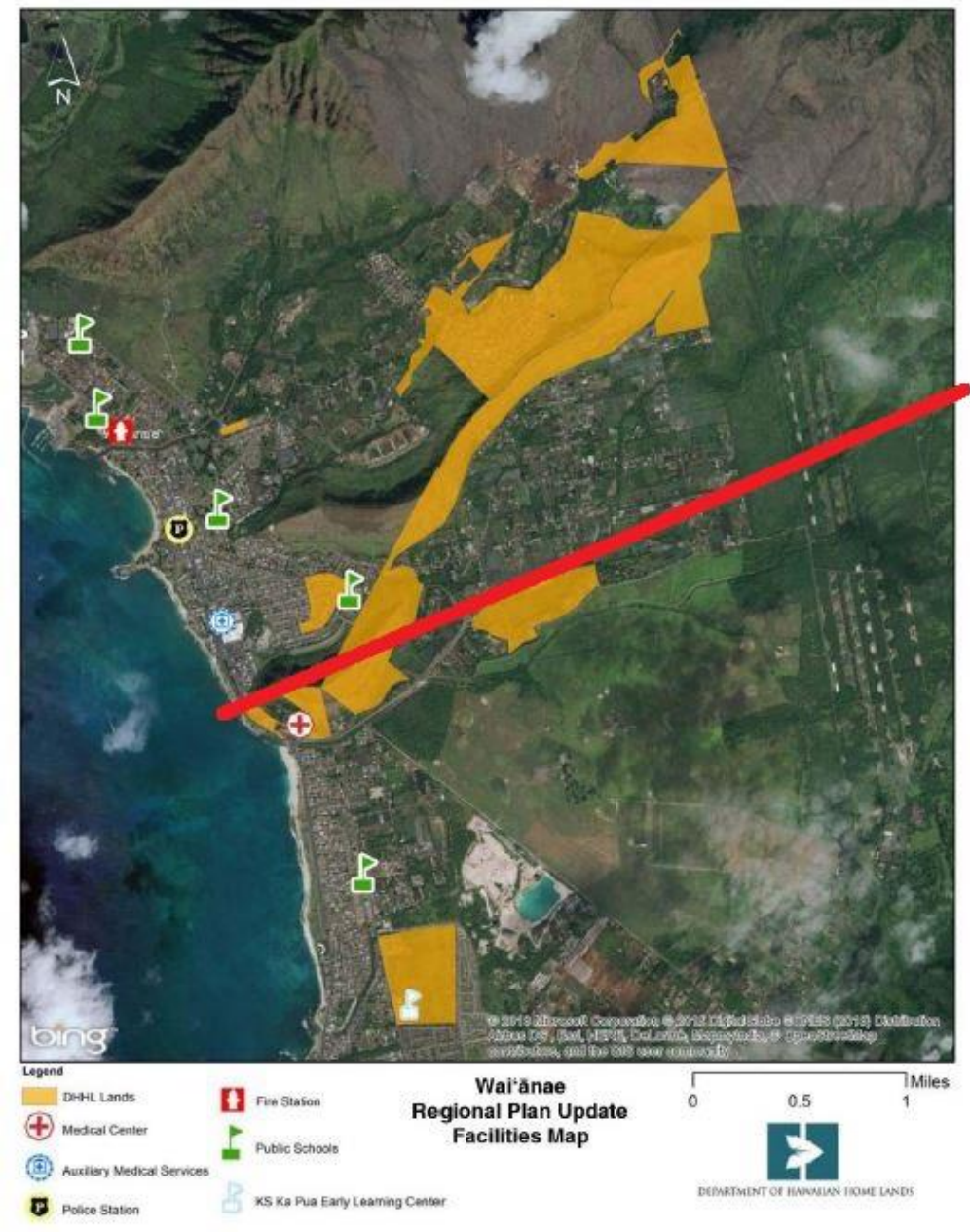
- 4,370 on Oahu
 - 1,315 in Nanakuli
 - 1,045 on Nanakuli Hawaiian Homestead
 - 270 on Princess Kahanu Estates
- 1,264 on Maui
- 839 on East Hawaii
- 872 on West Hawaii
- 695 on Kauai
- 394 on Molokai
- 44 on Lanai

DHHL Lease Activity Report as of July 2022

Lease Report For the Month Ending June 30, 2022												
	RESIDENCE			AGRICULTURE			PASTURE			TOTAL LEASES		
	Last Month	Add	Cancel	TOTAL	Last Month	Add	Cancel	TOTAL	Last Month	Add	Cancel	TOTAL
OAHU												
Kalahele	29	0	0	29	0	0	0	0	29	0	0	29
Kalahele	90	0	0	90	0	0	0	0	90	0	0	90
Kanohi	399	0	0	399	0	0	0	0	399	0	0	399
Kapole	176	0	0	176	0	0	0	0	176	0	0	176
Kaunakakai	144	1	0	145	0	0	0	0	144	1	0	145
Kaunapali	325	0	0	325	0	0	0	0	325	0	0	325
Kaunapali	19	0	0	19	0	0	0	0	19	0	0	19
Kewalo	248	0	0	248	0	0	0	0	248	0	0	248
Kumuhau	51	0	0	51	0	0	0	0	51	0	0	51
Lualualei	147	0	0	147	30	0	0	30	177	0	0	177
Maunaloa	225	0	0	225	0	0	0	0	225	0	0	225
Maunaloa	1,045	1	1	1,045	0	0	0	0	1,045	1	1	1,045
Papaloa	64	0	0	64	0	0	0	0	64	0	0	64
Princess Kaiulani Estates	270	0	0	270	0	0	0	0	270	0	0	270
Waialae	0	0	0	0	17	0	0	17	0	0	0	17
Waianae	421	0	0	421	12	0	0	12	433	0	0	433
Waimanalo	716	0	0	716	2	0	0	2	718	0	0	718
TOTAL	4,385	2	1	4,370	61	0	0	61	4,430	2	1	4,431
MAUI												
Halea	31	0	0	31	0	0	0	0	31	0	0	31
Kahului	0	0	0	0	0	0	0	75	75	0	0	75
Keokea	0	0	0	0	64	0	0	64	0	0	0	64
Lahai	103	0	0	103	0	0	0	0	103	0	0	103
Paukalo	178	0	0	178	0	0	0	0	178	0	0	178
Waiehu 1	39	0	0	39	0	0	0	0	39	0	0	39
Waiehu 2	109	0	0	109	0	0	0	0	109	0	0	109
Waiehu 3	114	0	0	114	0	0	0	0	114	0	0	114
Waiehu 4	97	0	0	97	0	0	0	0	97	0	0	97
Waiohuli	593	0	0	593	0	0	0	0	593	0	0	593
TOTAL	1,264	0	0	1,264	64	0	0	64	75	0	0	1,403
EAST HAWAII												
Discovery Harbour	2	0	0	2	0	0	0	0	2	0	0	2
Kamuela	0	0	0	0	0	0	0	25	25	0	0	25
Kaunapali	43	0	0	43	0	0	0	0	43	0	0	43
Kaunapali	472	0	0	472	0	0	0	0	472	0	0	472
Kurtistown	3	0	0	3	0	0	0	0	3	0	0	3
Maui	0	0	0	0	119	0	0	0	119	0	0	119
Panama	13	0	0	13	269	0	0	269	0	0	0	273
Pihema	17	0	0	17	0	0	0	0	17	0	0	17
Puapili	0	0	0	0	12	0	0	12	0	0	0	12
University Heights	4	0	0	4	0	0	0	0	4	0	0	4
Waialea	285	0	0	285	0	0	0	0	285	0	0	285
TOTAL	839	0	0	839	391	0	0	391	25	0	0	1,255
WEST HAWAII												
Honokaa	0	0	0	0	0	0	0	24	24	0	0	24
Honokaa	0	0	0	0	0	0	0	5	5	0	0	5
Kamoku	0	0	0	0	0	0	0	16	16	0	0	16
Kapoho	223	0	0	223	0	0	0	0	223	0	0	223
Kaunapali	192	0	0	192	0	0	0	1	193	0	0	193
Lalopua	277	0	0	277	0	0	0	0	277	0	0	277
Lanipua	30	0	0	30	0	0	0	0	30	0	0	30
Nihoa	0	0	0	0	0	0	0	21	21	0	0	21
Puukapu/Waimea/Kuhio VII	117	0	0	117	110	0	0	216	216	0	0	445
Puukapu	33	0	0	33	0	0	0	0	33	0	0	33
TOTAL	872	0	0	872	110	0	0	285	1,267	0	0	1,267
KAUAI												
Aiea	531	0	0	531	46	0	0	46	0	0	0	577
Hanalei	47	0	0	47	0	0	0	0	47	0	0	47
Kekaha	117	0	0	117	0	0	0	0	117	0	0	117
Puu Ope	0	0	0	0	0	0	0	1	1	0	0	1
TOTAL	695	0	0	695	46	0	0	46	1	0	0	742
MOLOKAI												
Honoleiua	153	0	0	153	345	0	0	345	21	0	0	519
Kalamazoo	167	0	0	167	70	0	0	70	3	0	0	240
Kapaemahu	47	0	0	47	0	0	0	0	3	0	0	50
Moomomi	0	0	0	0	3	0	0	3	0	0	0	3
One Ahi	27	0	0	27	0	0	0	0	27	0	0	27
TOTAL	394	0	0	394	418	0	0	418	27	0	0	839
LANAI												
Lanai	44	0	0	44	0	0	0	0	44	0	0	44
TOTAL	44	0	0	44	0	0	0	0	44	0	0	44
STATEWIDE TOTAL	5,477	2	1	5,476	1,090	0	0	1,090	413	0	0	5,981

➤ DHHL LAND IN MAILI & LUALUALEI

- Waianae Coast Comprehensive Health Center – Main Campus & All properties makai on Farrington Highway and on Mailiili Road
- Lualualei Agriculture Lots, Licenses & ROEs
- Voices of America in Maili
- Ulukekukui in Maili
- 40 acres DHHL lands to Kamehameha Schools for CLC-M Early Learning Complex (10 acres developed to date.)



➤ **Voices of America in Maili**

- Combo of 280 Single Family Lots & Multi Family Units, Construction 2026-2027

➤ **Ulukekukui in Maili**

- General Lease to Hawaiian Community Development Board (Kali Watson). Rentals expected to be available in 2023.
- 40 acres DHHL lands to Kamehameha Schools for CLC-M Early Learning Complex (10 acres developed to date.)



11,049

Residential WAITLIST on Oahu as of June 30, 2022

HOMESTEAD AREA AND ISLANDWIDE APPLICATIONS WAITING LIST MONTHLY REPORT FOR THE MONTH ENDING June 30, 2022

AREA WAITING LIST

DISTRICT AREA	RESIDENCE				AGRICULTURE				PASTURE				TOTAL
	Last Month	Add	Cancel	TOTAL	Last Month	Add	Cancel	TOTAL	Last Month	Add	Cancel	TOTAL	
Oahu District	936	0	2	934	0	0	0	0	0	0	0	0	934
Maui District	50	0	0	50	4	0	0	4	5	0	0	5	59
Hawaii District	129	0	0	129	28	0	0	28	46	0	0	46	203
Kauai District	51	0	0	51	3	0	0	3	27	0	0	27	81
Molokai District	19	0	0	19	17	0	0	17	1	0	0	1	37
TOTAL	1,185	0	2	1,183	52	0	0	52	79	0	0	79	1,314

ISLANDWIDE WAITING LIST

ISLAND	RESIDENCE				AGRICULTURE				PASTURE				TOTAL
	Last Month	Add	Cancel	TOTAL	Last Month	Add	Cancel	TOTAL	Last Month	Add	Cancel	TOTAL	
Oahu	10,100	24	9	10,115	3,907	10	0	3,917	0	0	0	0	14,032
Maui	3,859	3	1	3,861	4,709	3	0	4,712	624	0	0	624	9,197
Hawaii	5,857	8	2	5,863	7,281	8	0	7,289	1,908	2	0	1,910	15,062
Kauai	1,649	8	3	1,654	2,259	5	2	2,262	305	3	0	308	4,224
Molokai	821	0	0	821	1088	0	1	1087	207	0	0	207	2,115
Lanai	74	1	0	75	0	0	0	0	0	0	0	0	75
TOTAL	22,360	44	15	22,389	19,244	26	3	19,267	3,044	5	0	3,049	44,705

AREA AND ISLANDWIDE LISTS

	RESIDENCE				AG	PAS	TOTAL	ADDITIONS		CANCELLATIONS	
	RES	AG	PAS	TOTAL							
OAHU	11,049	3,917	0	14,966				New Applications	75	New Lease Awards	13
MAUI	3,911	4,716	629	9,256				Application Transfers	0	Application Transfers	0
HAWAII	5,992	7,317	1,956	15,265				Lease Rescissions	0	Succ'd and Cancel Own	2
KAUAI	1,705	2,265	335	4,305				App Reinstatements	0	Public Notice Cancel	0
MOLOKAI	840	1,104	208	2,152				HHC Adjustments	0	Voluntary Cancellations	3
LANAI	75	0	0	75				TOTAL	75	Lease Successorships	0
TOTAL	23,572	19,319	3,128	46,019						HHC Adjustments	0
										Dec'd No Successor	2
										Additional Acreage	0
										NHQ Unqualified	0
										TOTAL	20

SCHOOLS

In Nanakuli & Maili

SCHOOLS ON DHHL LAND IN NANAKULI

2,802 students enrolled in 2021 on DHHL land in Nanakuli

- ✓ 1,005 students Nanakuli High & Intermediate School (7-12)
- ✓ 741 students Ka Waihona O Ka Na'auao PCS (K-8)
- ✓ 714 students Nanaikapono Elementary School (K-6)
- ✓ 342 students Nanakuli Elementary School (K-6)

SCHOOL ON STATE LAND IN MAILI

- ✓ 635 students Maili Elementary School (K-6) enrolled in 2021



ECONOMIC STABILITY

Jobs & Business Opportunities

JOBS & BUSINESS OPPORTUNITIES IN NANAKULI & MAILI

- DOE & Charter Schools
- Kamehameha Schools
- Waianae Coast Comprehensive Health Center
- PVT Landfill (Non-Union)
- CDL Truck Drivers and Business Owners
- Farms
- Lualualei Naval Facilities
- Kahe Power Plant
- Fast Food, Restaurants, and Stores
- City, State, and Federal Government Facilities
- Nanakuli Village on DHHL land
- DHHL Land for Other Uses

DHHL LAND FOR OTHER USES

Right of Entry Permits:

- 438.1 acres Nanakuli Ranch-Pastoral for \$11,280 annual lease rent
- 1,126.0 acres Lyman Ranch-Pastoral for \$14,304 annual lease rent
- 1.2 acres Mary Ann Higashi-Stabling for \$336 annual lease rent
- 0.115 acres Charlene L. Ching-Caretaker for \$240 annual lease rent
- 6.4 acres Kennard Hicks-Agriculture for \$240 annual lease rent
- 2.0 acres Frances Kama-Silva-Industrial (same parcel as Pastoral) for \$6,427 annual lease rent
- 8.0 acres Frances Kama-Silva-Pastoral (same parcel as Industrial) for \$2,772 annual lease rent
- 0.712 acres Waianae Coast Comprehensive & Hospital Board Inc-Community for \$2,088 annual lease rent (Butler Building in Nanakuli) 8-9-004:014 p
- 2.0 acres Waianae Coast Comprehensive & Hospital board Inc-Community for \$480 annual lease rent 8-6-001:012 & 024 p (WCCHC in Waianae—land for extra parking lot on Mailili Road)
- 20 acres State DOH Clean Water Branch-Public Service for \$0 Gratis; restore vegetation within drainage basin
- ? acres US DOI & Control Point Surveying Inc-Public Service \$0 Gratis; conduct land surveying field activities, including not limited to data collections and survey monumentation.

License:

- ? Acres Honolulu Community Action Program Inc—Head Start Program-Education at Ka Waihona for \$3,960 annual lease rent
- 0.05 acres Aha Punana Leo Inc.-Education at Ka Waihona for \$4,200 annual lease rent
- 0.586 acres Kamehameha Schools-Education at Ka Waihona for \$27,552 annual lease rent
- 0.342 acres Ka Waihona O Ka Na'auao Charter School-Education for \$0 Gratis; educational services, SOH Charter School
- 1.217 acres Kamehameha Schools-Hoaliku Drake Preschool in Princess Kahanu Estates for \$0 Gratis
- ? Acres House of Salvation Church-Church (Pastor Kevin Kwan) at Ka Waihona for \$4,080 annual lease rent
- 1.011 acres Boys & Girls Club of Hawaii-Public Service for 1,000 annual lease rent
- 1.01 acres Nanaikapono Protestant Church-Church for \$220 annual lease rent
- 0.86 acres St. Rita's Catholic Church-Church for \$187 annual lease rent
- 1.49 acres Nanakuli Door Faith Mission-Church for \$325 annual lease rent
- 97.764 acres Kaala Farm Inc.-Community Cultural for \$0 Gratis; Curatorship, conservation and operation of the Cultural Learning Center at Kaala
- 0.011 acres T-Mobile West Corp.-Telecommunication for \$23,805 annual lease rent
- 0.148 acres Verizon Wireless-Telecommunication for \$18,295 annual lease rent
- 0.488 acres C&C of Honolulu Nanakuli Fire Department for \$10,000 annual lease rent
- Various City, State, Federal for utilities, parks, transportation, etc. \$0 Gratis

General Lease:

- 2.112 acres Nanakuli Hawaiian Homestead Community Association-Hale Makana O Nanakuli for \$1 annual lease rent
- 9.848 acres Nanakuli Hawaiian Homestead Community Association-Nanakuli Village for \$110,000 annual lease rent
- 2.652 acres Kamehameha Schools-Education-Learning Center at Nanakuli Village for \$41,600 annual lease rent
- 0.46 acres Hale Ola Ho'opakolea-Public Service (1st Road) for \$3,325 annual lease rent
- 2.619 acres Waianae District Comprehensive Health & Hospital Board Inc-Public Service for \$57,000 annual lease rent
- 11.052 Acres Wong Hong Hin Inc.-Agricultural on Waianae Valley Road for \$7,920 annual lease rent

The background features a series of concentric circles in light gray and dashed lines. A large yellow speech bubble is centered on the page, containing the text. The speech bubble has a small tail pointing downwards.

CHALLENGES

&

CONCERNS

CHALLENGES & CONCERNS

- Flooding from Rain & Surf
 - Paakea and Farrington Highway
- Sea Level Rise on Farrington Highway
 - We need a 2nd Access Road mauka to Kunia and Makakilo
- Old Homes on DHHL Homestead in Nanakuli
 - We need funding to secure new home loans
 - The rising cost of rentals for families and kupuna
- Work, School & Business Opportunities in Kapolei and Honolulu
 - The rising cost of gas to travel each day to Kapolei and Honolulu
- Houseless Camps in Nanakuli and Maili
- Beach & Park Issues
 - Our free ocean recreation and grounding
 - Over-crowding by tourist and houselessness
 - Trash and disrepair

KE AKUA PU

God Bless All of You