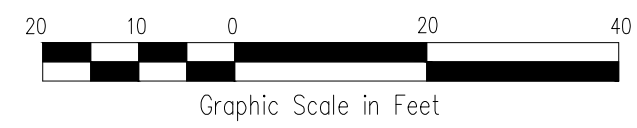


HALAWA - SITE 2137
SITE PLAN OPTION

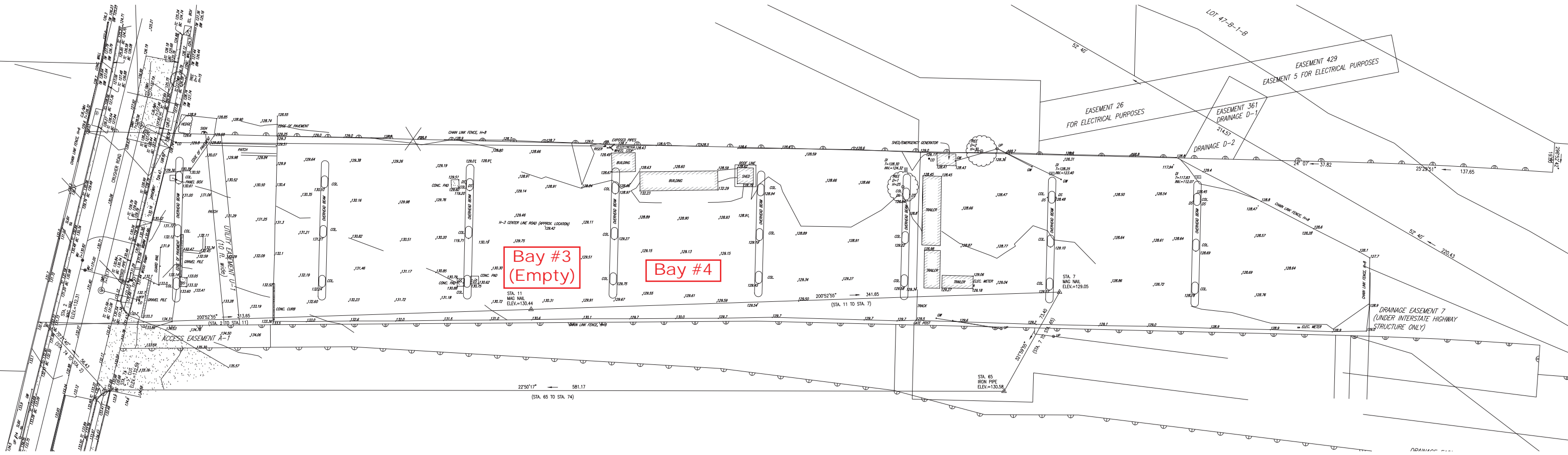
SCALE: 1"=20'

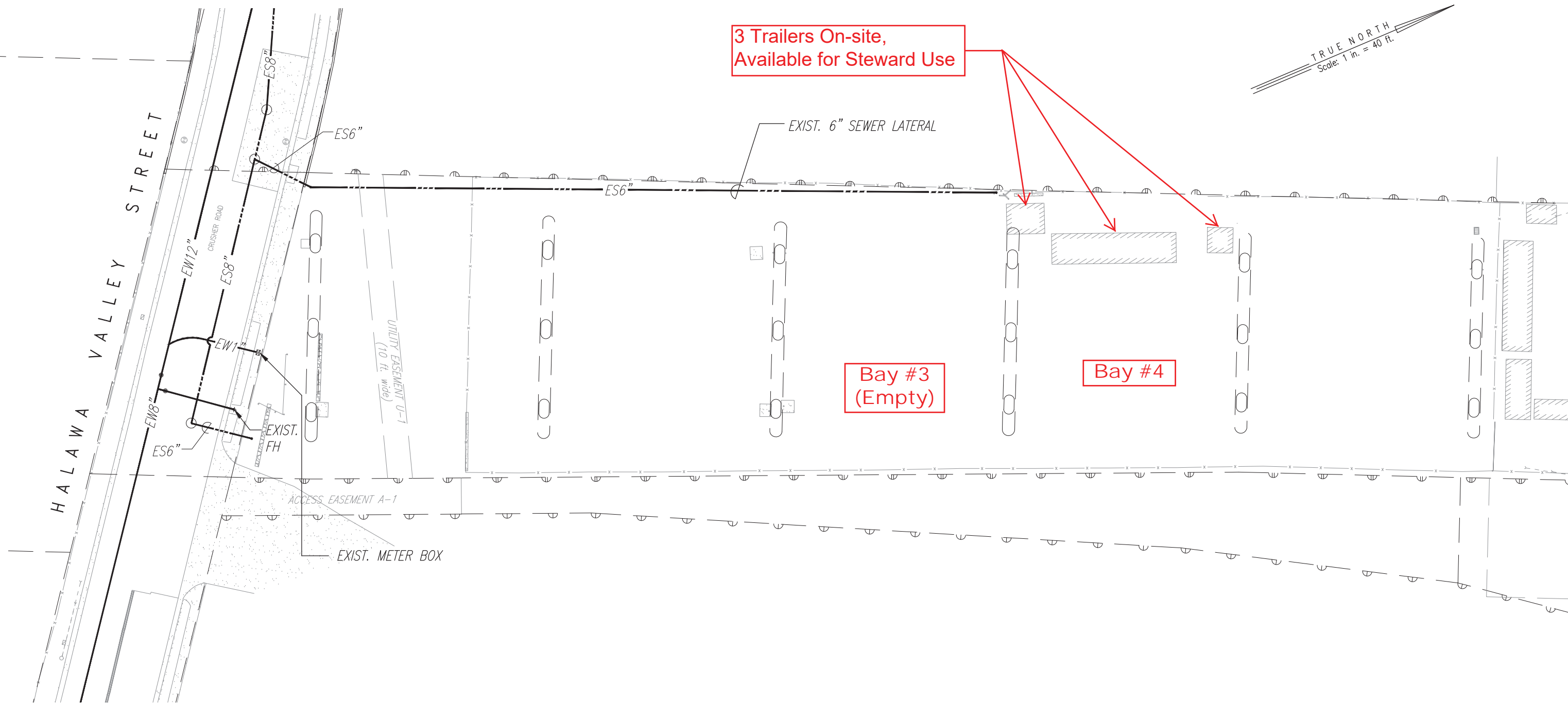


**HALAWA-LULUKU INTERPRETIVE
 DEVELOPMENT PROJECT**

HALAWA, OAHU, HAWAII
 OWNER: STATE OF HAWAII, DEPARTMENT OF TRANSPORTATION
 DEVELOPER: OFFICE OF HAWAIIAN AFFAIRS
 TAX MAP KEY: 9-9-010:010

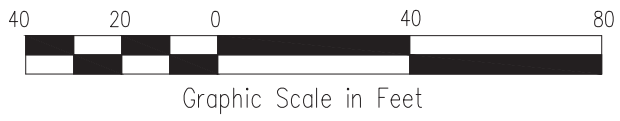
HALAWA - SITE 2137
SITE PLAN OPTION





**HALAWA - UNDER THE VIADUCT
UTILITY CONNECTION**

SCALE: 1"=40'




Community Planning and Engineering, Inc.
 Engineering Design | Construction Management | Infrastructure Planning
 1266 Queen Emma Street Honolulu, Hawaii

**HALAWA-LULUKU INTERPRETIVE
DEVELOPMENT PROJECT**

HALAWA, OAHU, HAWAII

OWNER: STATE OF HAWAII, DEPARTMENT OF TRANSPORTATION
 DEVELOPER: OFFICE OF HAWAIIAN AFFAIRS
 TAX MAP KEY: 9-9-011:002

**HALAWA - UNDER THE VIADUCT
UTILITY CONNECTION**