

BOARD OF TRUSTEES

Carmen. Hulu Lindsey, *Chairperson*Leina'ala Ahu Isa, *Vice Chairperson*

Dan Ahuna, Trustee Kaua'i & Ni'ihau

Kalei Akaka, Trustee O'ahu

Keli'i Akina, Trustee At-Large

Luana Alapa, Trustee Moloka'i & Lāna'i

Brendon Kalei'āina Lee, Trustee At-Large

Mililani Trask, Trustee Hawai'i Island

John Waihe'e IV, Trustee At-Large



STATE OF HAWAII OFFICE OF HAWAIIAN AFFAIRS

MEETING OF THE BOARD OF TRUSTEES

DATE: Friday, July 15, 2022

TIME: 10:00 am

PLACE: Virtual Meeting

Viewable at www.oha.org/livestream OR

Listen by phone: (213) 338-8477,

Webinar ID: 895 2766 5425

Due to COVID-19, the OHA Board of Trustees and its standing committees will hold virtual meetings until further notice. The virtual meeting can be viewed and observed via livestream on OHA's website at www.oha.org/livestream or listened by phone: (213) 338-8477, Webinar ID: 895 2766 5425

A physical meeting location open to the general public will be available at 560 N. Nimitz Hwy., Suite 200, Honolulu HI 96817. All members of the public that wish to access the physical meeting location must pass a wellness check and provide proof of full vaccination or a negative COVID-19 test taken within 72 hours of entry.

AGENDA

- I. Call to Order
- II. Approval of Minutes
 1. June 9, 2022
- III. Executive Session†
 - A. Consultation with Kumabe HR LLC, Board Counsel Robert Klein, re: questions and issues pertaining to the Board's powers, duties, privileges, immunities, and liabilities regarding the Board's evaluation instrument and goals in its performance appraisal of OHA's Chief Executive Officer pursuant to HRS§92-5(a)(2) and (4). *
- IV. Community and Celebrations**(Please see page 2 on how to submit written testimony or provide oral testimony. Oral testimony by phone will not be accepted)
- V. Announcements
- VI. Adjournment

If you require an auxiliary aid or accommodation due to a disability, please contact Everett Ohta at telephone number 594-1988 or by email everetto@oha.org no later than three (3) business days prior to the date of the meeting. Meeting Materials will be available to the public 48 hours prior to the meeting at OHA's main office located at 560 N. Nimitz Hwy., Suite 200, Honolulu, HI 96817. Meeting material will also be available to view at OHA's neighbor island offices and posted to OHA's website at: www.oha.org/bot

In the event that the livestream or the audiovisual connection is interrupted and cannot be restored, the meeting may continue as an audio-only meeting through the phone and Webinar ID listed at the beginning of this agenda. Meeting recordings are available upon request to BOTmeetings@oha.org until the written meeting minutes are posted to OHA's website.

†Notice: The 72 Hour rule, pursuant to OHA BOT Operations Manual, Section 49, shall be waived for distribution of new committee materials.

* Public Testimony will be called for each agenda item and must be limited to matters listed on the meeting agenda.

** Community Concerns and Celebrations is not limited to matters listed on the meeting agenda.

‡ Notice: This portion of the meeting will be closed pursuant to HRS § 92-5.

BOARD OF TRUSTEES

Carmen. Hulu Lindsey, *Chairperson*Leina'ala Ahu Isa, *Vice Chairperson*

Dan Ahuna, Trustee Kaua'i & Ni'ihau

Kalei Akaka, Trustee O'ahu

Keli'i Akina, Trustee At-Large

Luana Alapa, Trustee Moloka'i & Lāna'i

Brendon Kalei'āina Lee, Trustee At-Large

Mililani Trask, Trustee Hawai'i Island

John Waihe'e IV, Trustee At-Large



STATE OF HAWAII OFFICE OF HAWAIIAN AFFAIRS

Hawai'i Revised Statutes, Chapter 92, Public Agency Meetings and Records, prohibits Board members from discussing or taking action on matters not listed on the meeting agenda.

Testimony can be provided to the OHA Board of Trustees either as: (1) **written testimony emailed** at least 24 hours prior to the scheduled meeting, (2) **written testimony mailed** and received at least two business days prior to the scheduled meeting, or (3) live, oral testimony online or at the physical meeting location during the virtual meeting.

- (1) Persons wishing to provide **written testimony** on items listed on the agenda should submit testimony via **email** to **BOTmeetings@oha.org** at least **24 hours prior** to the scheduled meeting or via **postal mail** to Office of Hawaiian Affairs, Attn: Meeting Testimony, 560 N. Nimitz Hwy., Suite 200, Honolulu, HI 96817 **to be received at least two business days prior** to the scheduled meeting. Any testimony received after these deadlines will be late testimony and will be distributed to the Board members after the scheduled meeting.
- (2) Persons wishing to provide **oral testimony online** during the virtual meeting must first register at: https://us06web.zoom.us/webinar/register/WN_jCXp4SfSSgueJyKc_68-Zg

You need to register if you would like to orally testify. Once you have completed your registration, a confirmation email will be sent to you with a link to join the virtual meeting, along with further instructions on how to provide oral testimony during the virtual meeting. The registration page will close once the Community Concerns agenda item has concluded.

To provide oral testimony online, you will need:

- (1) a computer or mobile device to connect to the virtual meeting;
- (2) internet access; and
- (3) a microphone to provide oral testimony.

Oral testimony by telephone/landline **will not** be accepted at this time. Once your oral testimony is completed, you will be asked to disconnect from the meeting. If you do not sign off on your own, support staff will remove you from the Zoom meeting. You can continue to view the remainder of the meeting on the livestream or by telephone, as provided at the beginning of this agenda.

- (3) Persons wishing to provide **oral testimony at the physical meeting location** can sign up the day-of the meeting at the physical meeting location.

Oral testimony online or at a physical meeting location will be limited to five (5) minutes.

Please visit OHA's website for more detailed information on how to submit Public Testimony OR Community Concerns at: <https://www.oha.org/how-to-submit-testimony-for-oha-bot-meetings/>

Carmen Hulu Lindsey
Trustee Carmen Hulu Lindsey
Chairperson, Board of Trustees

7/8/2022
Date

Office of Hawaiian Affairs
Meeting of the Board of Trustees
July 15, 2022
10:00 A.M.

II. Approval of Minutes

1. June 9, 2022

DRAFT

STATE OF HAWAII

Waimea Valley – Proud Peacock Room
59-864 Kamehameha Hwy.

Hale‘iwa, HI. 96712

(VIRTUAL MEETING - VIA ZOOM WEBINAR)

Due to COVID-19, the OHA Board of Trustees and its standing committees will hold virtual meetings until further notice. The virtual meeting can be viewed and observed via livestream on OHA’s website at www.oha.org/livestream or listened by phone: (213) 338-8477, Webinar ID: 816 7928 9302 All members of the public that wish to access the physical meeting location must pass a wellness check and provide proof of full vaccination or a negative COVID-19 test taken within 72 hours of entry.

Minutes of the Office of Hawaiian Affairs Board of Trustees MINUTES June 9, 2022

ATTENDANCE:

Chairperson Carmen Hulu Lindsey
Trustee Leina‘ala Ahu Isa
Trustee Dan Ahuna
Trustee Kaleihikina Akaka
Trustee Keli‘i Akina
Trustee Luana Alapa
Trustee Brendon Kalei‘āina Lee
Trustee Mililani Trask
Trustee John Waihe‘e, IV

ADMINISTRATION:

Ramona Hinck, CFO
Everett Ohta, Interim General Counsel
Nietzsche Ozawa, Interim Senior Legal Counsel
Lei-Ming Ayat-Verdadero, BSA Mgr.
Starr Kalilikane - BSA
Erin Nakama-IT Support
Arlene Aguinaldo-IT Support

BOT STAFF:

Amber Kalua, Trustee Aide
Kanani Iaea, Trustee Aide
Kauai Wailehua, Trustee Aide
LeiAnn Durant, Trustee Aide
Anuheia Diamond, Trustee Aide
Nathan Takeuchi, Trustee Aide
Brandon Mitsuda, Trustee Aide
Mark Watanabe, Trustee Aide
Pohai Ryan, Trustee Aide
Lehua Itokazu, Board Secretary

GUEST:

Eric Enos – Ka‘ala Farms
Alapaki Nahale-a - ‘Iole Stewardship Center
Todd Apo - ‘Iole Stewardship Center
Richard Pezzulo – Waimea Valley

Call to Order

Chair Hulu Lindsey Calls the Board of Trustees Meeting to order for Thursday, June 9, 2022, at 10:03 a.m. Board Secretary, please do a roll call.

MEMBERS			Present	TIME ARRIVED
TRUSTEE	LEINA'ALA	AHU ISA	X	
TRUSTEE	DAN	AHUNA	X	
TRUSTEE	KALEI	AKAKA	X	
TRUSTEE	KELI'I	AKINA	X	Attended by Zoom
TRUSTEE	LUANA	ALAPA	X	
TRUSTEE	BRENDON KALEI'ĀINA	LEE	X	
TRUSTEE	MILILANI	TRASK	X	Attended by Zoom
TRUSTEE	JOHN	WAIHE'E	X	
CHAIRPERSON	CARMEN HULU	LINDSEY	X	
			9	

At the Call to Order, **nine (9)** Trustees are PRESENT, thereby constituting a quorum.

Chair Hulu Lindsey Welcome everyone, we are here in Waimea Valley, here in O'ahu. As a reminder for those joining us by Zoom, please mute your mics when you are not speaking and have your cameras turned off until called upon. The virtual meeting can be viewed and observed via livestream on OHA's website at www.oha.org/livestream

Joining the Trustees today is my staff, Aides-Kanani Iaea and Amber Kalua, our Board Secretary-Lehua Itokazu. Also with us today is Robert Klein and sitting in for our CEO is our Interim General Counsel - Everett Ohta. Everett, could you please introduce any staff that we have here.

Everett Ohta, Interim - General Counsel Thank you Chair Lindsey and good morning Trustees, we are honored to be here in Waimea Valley. Thank you for the hospitality shown by Richard Pezzulo and staff. Joining us for the BOT meeting this morning is Lei-Ming Ayat-Verdadero, Starr Kalilikane from our Beneficiary Services Program as well as, Jason Lees and Josh Koh from our Digital Media.

Public Testimony & Community Concerns and Celebration

There are no testifiers.

New Business

A. Community Presentations

1. Ka'ala Farms – Eric Enos

Chair Hulu Lindsey Aloha Eric, thank you for being here and sharing your presentation with us.

Eric Enos, Ka'ala Farms Aloha mai kākou, I was invited by your staff to come out. This is an interesting place, so different from Wai'anae. I am from Ka'ala Farms and we have been around since the 1970s. We have deep roots in Wai'anae moku and we really appreciate that last funding cycle. This allowed us to shift gears with Covid. Normally, we have about three to four thousand school children at our learning center but because of Covid, we had to press stop and move into a food distribution. We were ready, we had alot of kalo coming from our fields and it was 'ulu season. We were able to cook, present, and give away food. More importantly, to engage and teach where the food comes from and how to make these food options 'ono, delicious, and healthy. We work closely with the Wai'anae Coast Comprehensive Health Center (WCCHC) and we were able to get some grants from the City to help us. We have 97 acres of Hawaiian Homelands – it use to be a youth program, I was working with the youth gangs. It was ranch land, the community got the land and the lease when the ranch got into trouble. I called the Bishop Museum and they came out. They brought a map that was done in 1906, it showed the entire back of the valley covered in taro. I went to see Senator Matsuura from Hilo. He came out and walked the trail with me and went out to the plantation diversion ditch and he told me what to do. He said you go through the process of a community, the district use application based on the water and then I'll take you to *inaudible* waste water engineer. After the plantations divereted all the water *inaudible*. I went through the process and got everyone on board; DOFA, SHPD, DLNR, all the agencies. This was a great project working with youth. This was just to bring a little bit of water down to create a little creak. I handed the letter in and I got a letter back that said request denied. How can we farm? In the summer of 1978, I took action. Some people donated 2" pvc pipes, one mile. We stuck in the plantation diversion ditch and we followed all the conditions that was designed for us. We brought the water down from 600 ft. elevation to 400 ft. elevation. Prior to that, I took our youth to the Waiāhole struggle. We met with the farmers and they put us in the frontline. We learned about civil disobedience. Governor Ariyoshi, at the time, took the valley over. Meeing all those farmers, I learned about kalo. At the time, I knew nothing about kalo but they all came out and helped us. I started to plant kalo and cleared all my land. About six months later, the State enforcement agency came on and *inaudible* I said okay, I am not going to argue with you, I know you're doing your job. I went and looked up a list of the landlords, I went down the list and I looked for the first Hawaiian name, Larry Mehau. He didn't return my call, so the next name was Moses Kealoha. He said come see me, bring all your maps and work that you did. He looked at everything and told me at the next board meeting, to come and testify, and I will take care of the rest. I went and testified before the land board. I followed all the rules and did everything that needed to be done. I really had no choice because we needed water. The land board then voted yes, they are going to support us putting in the 2" pvc pipe on State land; however, where the pipe entered the stream is out of the State's jurisdiction. We had permission to lay the pipe on state land. Where it entered the stream, it was out of the State's jurisdiction. Who owns the water? 1978, the Con Con, the water commission was established. What we did was start establishing a Native Hawaiian organization, rights to the percentage of the water in the watershed to allow us to have the uses to recharge other purged brown water, which recharges other purged brown water. This recharges the Board of Water supply wells below. It was a win-win. The hydrology of water is very critical, especially with climate change. We've done studies that looked at recharging brown water and we are going after that water. We had 1,100 acres of State land just turned over to us, the old Wai'anae Ranch. The Department of Ag. – gross mismanagement. When William Aila was Chair, he removed the Department of Ag and it got turned over to us. We got \$60K from you to do an environmental assessment that allowed us to have the lease and share it with Ho'omau Ke Ola Substance and Abuse Program. Now, we are working on water rights on the back of Wai'anae. The Wai'anae kai is the best preserved, intact Hawaiian system. The whole back of the valley was never bulldozed because it was too rocky. Hundreds of acres untouched, only cattle so we are going for the historical register for Federal recognition. I have been working with Hawaiian Homelands for kānakas who can have raw land, to transpire that into a viable living place. Sorry to go over my time, I just think these are key issues. What we have done with water sends a precedence. We are now working with the Board of Water Supply, we are working with HECO and they are helping to fund. Every summer, we have interns; juniors, seniors, and college students. We work with them and take each level of experiences. This

covers sustainability, fire, water, indigenous knowledge, ‘ai pono, energy, policy, and politics. These are all the issues, we take every level of issues and we bound them together. We need to produce more Native Hawaiian scientist, geologist, archaeologist, botonist. All that are applying to these kinds of jobs are coming in from other places.

Chair Hulu Lindsey I just want to say the Baord is coming down to Wai‘anae for a community meeting. If you want to come down to present again, you can.

Trustee Ahuna You mentioned about getting more geologist and botonist, how do you think OHA can support that?

Eric Enos, Ka‘ala Farms You gotta get them early in our schools, public and private. Support from Kamehameha Schools, it is important that they support commuity nonprofits. They are pulling back our funding and I think that is very tragic.

Trustee Ahuna We should have scholarships ready for our children out there. These kids should have scholarships where they do not have to compete or have obstacles. We should be giving them away. How many kids in Wai‘anae have these options?

Trustee Akaka Mahalo for your presentation. I am very interested if we can do a site visit at your farm?

Eric Enos, Ka‘ala Farms Absolutely, yes. We had Ernie Lau, from the Board of Water Supply. We opened up fourteen acres in Makaha, this where Board of Water Supply has a lot of land. When the time comes, we have always testified; and when we fight, we fight clean. We disagree honorably, we set up communications. He came out to talk stories. The Hawaiian Civic Club did pass a water resolution and we mahalo them for that. This resolution looked at our water situation in Wai‘anae. We are not asking for all of the water, we are just asking for our fair share. It will be a recharge, it’s a win-win.

Trustee Akaka I also wanted to ask what can OHA do for you immediately to further your mission?

Eric Enos, Ka‘ala Farms Learning about the issues with water.

Chair Hulu Lindsey Mahalo nui Eric. When we have our meeting out your side, we will have our staff set up a site visit. Next up is Alapaki from ‘Iole Stewardship Center.

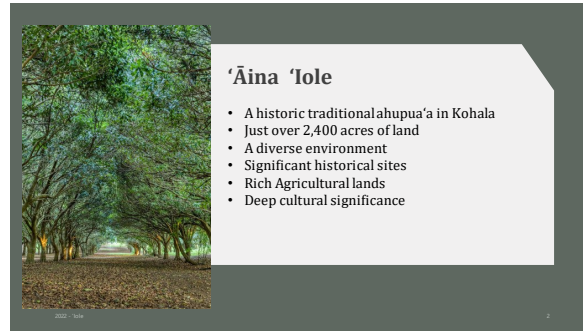
A. Community Presentations

1. ‘Iole Stewardship Center – Alapakai Nahale-a

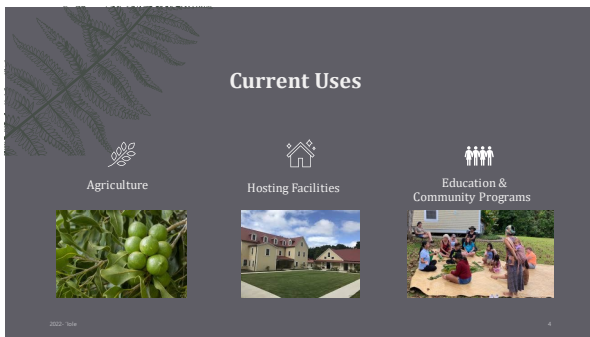
Alapaki Nahale-a, ‘Iole Stewardship Center Aloha Chair Lindsey, Vice Chair Trustee Ahu Isa, and Trustees, mahalo to Trustee Lee for the invite to present today, OHA staff for all your work, the Waimea Valley ‘ohana for hosting the meeting, and a special aloha to Uncle Eric. It’s been over thirty years since I visited Ka‘ala with Uncle Eric and Uncle Eddie, thank you for paving the way. I am the Alapaki Nahale-a, Interim CEO for ‘Iole and I am happy that our Board member Todd Apo is on here joining us.

I want to start with ‘Iole is a nonprofit and ‘Iole is about ‘āina. A traditional ahupua‘a, very diverse and over 2,400 acres of land and has a deep cultural significance. To be there and traverse ‘Iole is to walk in history, there are many stories and evidence pre-contact. We know Kamehameha coming from Kohala, that this place has a lot of impact including his rare canoe landing that, here we are today, still with the challenge of

stewarding this place as a lāhui. The land is owned by the New Moon Foundation, they reached out to the



Hawaiian Community Foundation (HCF) to see if they would be interested in taking on this kuleana. I want to give HCF credit because this is not something they would normally do but their leadership decided this was something they would embrace. In order for HCF to receive this and implement anything, they started their own nonprofit called 'Iole. We see 'Iole as a special kuleana to take of this place and our lāhui. Our Board consist of HCF, University of Hawai'i, and Arizona State University. Both Universities are interested in the work that is being done here at 'Iole. Early partners in our initiative have included Hawaii Electric Industries and Kamehameha schools and we're now starting to work with our community, like Kohala High School.



Majority of this ahupua'a is agriculture, ag-lessons. We host learners for different events, a variety of education programs, and we will be adding research programs. I believe an ahupua'a is really about a community and community of practice. People who will wrap arms and keep each other accountable, support, and create an abundance. Recently, I have been pushing restoration because we have been living detrimental to both the environment and humans so we have to restore better practice. When we do this, then we can move to sustainable practice. One of the things important to me is stewarding 'āina but in away, we are modeling solutions locally and globally; so globally, energy and food and onsite water and waste. One of the ways that I am framing this is that within 7-10 years, I intend for 'Iole to have the capacity to be totally self-sufficient for water, energy, and waste. If we want find solutions for the world, then we need to be models of the behaviors and practices to make recommendations and suggestions. I just wanted to give you an overview of 'Iole. We woud love to have OHA a part of our 'ohana in whatever way makes sense and I am happy to provide more details if needed or host staff.

Trustee Akaka Mahalo nui for your presentation. Back in 2016, I had the pleasure of visiting 'Iole with my grandfather, Daniel Akaka. He was so enamored with the property there. I wanted to ask you what some of the changes are that we've seen since then with facilities, ag-land, and the fish farm.

Alapaki Nahale-a, 'Iole Stewardship Center We have actually tried to keep the property as status quo as much as possible. Everything that has been happening there is positive and impactful so we've maintained *in audible* we are looking to add value and to amplify what the site can deliver. I would look at it more as a refreshing application rather than a change. In truth, many initiatives that the Kohala Institute started did not get launched and so we are starting with those initiatives like the ag-research and some stream restoration.

Trustee Akaka Do you still have the fishpond?

Alapaki Nahale-a, 'Iole Stewardship Center Yes, the fishpond is still operational but it is in the transitional phase right now, they will be located at another site.

Trustee Akina Thank you for acknowledging me. First, I wanted to say aloha to Alapaki and to Todd, good to see both of you on the screen and thank you for your work at the 'Iole Stewardship Center, great initiatives. You mentioned earlier that you're moving forward to carry out some of the initiatives started by the Kohala Institute. Could I ask what the role of Kohala Institute will be in the forward direction of your stewardship center?

Alapaki Nahale-a, 'Iole Stewardship Center Absolutely and I'll say it's nice to see you again, the Kohala Institute is phasing out and I believe they will not be doing anything else. I think the organization is closing up shop but we did keep all the staff. All the research that has been done, the plans that were laid and community connections made. We want to continue them but as a former organization, I believe that the New Moon Foundation is closing them down.

Chair Hulu Lindsey Mahalo nui Alapaki. Moving on to item IV.B., I will call on Trustee Waiha'e

B. Committee on Resource Management .

- 1. Action Item RM #22-10: Limited Delegation of Authority of Chapter 10-17 Grant Awards for the Purposes of Effecting Responsive Emergency Financial Assistance and Community Based, Micro Kōkua Grants (2nd reading)**

Trustee Waiha'e Madame Chair I would like to move to

Action 3

re: ACTION ITEM RM #22-10

Approve the limited delegation of grant awarding authority, pursuant to section 10-17, Hawai'i Revised Statutes, to the Chief Executive Officer for:

- A. Program 3800 – Grants, Object Code – 56510 – Grants in Aid Program & Proviso Grants, Emergency Financial Assistance (“EFA”) Grants, up to \$2,000 per award, and an overall budgetary limit of \$830,000 in both FY22 and FY23, less any amounts in 3rd party grant agreements executed for the purposes of EFA;**
- B. Program 3800 – Grants, Object Code – 56560 – Sponsorships, Rural Community-Based, Micro Kōkua Grants for event sponsorships (“Kōkua Grants”), up to \$1,000 per award, and an overall budgetary limit of \$30,000 in both FY22 and FY23; and subject to weekly reporting to the Board**

Trustee Akaka Seconds the motion.

Trustee Waihe'e Moves

Approve the limited delegation of grant awarding authority, pursuant to section 10-17, Hawai'i Revised Statutes, to the Chief Executive Officer for:

- A. Program 3800 – Grants, Object Code – 56510 – Grants in Aid Program & Proviso Grants, Emergency Financial Assistance (“EFA”) Grants, up to \$2,000 per award, and an overall budgetary limit of \$830,000 in both FY22 and FY23, less any amounts in 3rd party grant agreements executed for the purposes of EFA;**
- B. Program 3800 – Grants, Object Code – 56560 – Sponsorships, Rural Community-Based, Micro Kōkua Grants for event sponsorships (“Kōkua Grants”), up to \$1,000 per award, and an overall budgetary limit of \$30,000 in both FY22 and FY23; and subject to weekly reporting to the Board**

Trustee Akaka Seconds the motion.

	1	2	‘AE (YES)	‘A‘OL E (NO)	KANALUA (ABSTAIN)	EXCUSED
TRUSTEE LEI AHU ISA			X			
TRUSTEE DAN AHUNA			X			
TRUSTEE KALEI AKAKA		X	X			
TRUSTEE KELI‘I AKINA			X			
TRUSTEE LUANA ALAPA			X			
TRUSTEE BRENDON LEE			X			
TRUSTEE MILILANI TRASK			X			
TRUSTEE JOHN WAIHE‘E		X	X			
CHAIRPERSON HULU LINDSEY			X			
TOTAL VOTE COUNT			9			
MOTION: [X] UNANIMOUS [] PASSED [] DEFERRED [] FAILED						
Motion passes with nine (9) Yes votes, Zero (0) No votes and Zero (0) Excused.						

Announcements

Chair Hulu Lindsey Are there any announcements?

Trustee Lee Tomorrow some of the Trustees will be gathering for the King Kamehameha Lei draping.

Chair Hulu Lindsey Yes, thank you. All the trustees are invited. We would like to mahalo Richard and all of his staff here at Waimea Valley for hosting us today.

We also have two Board members here with us, mahalo for coming.

Adjournment

Trustee Ahuna Moves to adjourn the meeting.

Trustee Waihe'e Seconds the motion.

Adjournment							
TRUSTEE		1	2	'AE (YES)	A'OLE (NO)	KANALUA (ABSTAIN)	EXCUSED
LEINA'ALA	AHU ISA			X			
DAN	AHUNA	X		X			
KALEIHIKINA	AKAKA			X			
KELI'I	AKINA			X			
LUANA	ALAPA			X			
BRENDON KALEI'ĀINA	LEE			X			
MILILANI	TRASK			X			
JOHN	WAIHE'E		X	X			
CHAIR CARMEN HULU	LINDSEY			X			
TOTAL VOTE COUNT				9			

Chairperson Carmen Hulu Lindsey Adjourns the Board of Trustees meeting at 10:55 a.m.

Respectfully submitted,

Lehua Itokazu
Board Secretary

As approved by the Board of Trustees on July 15, 2022.

Carmen Hulu Lindsey
Chairperson, Board of Trustees

Attachments:

1. 'Iole Stewardship Powerpoint

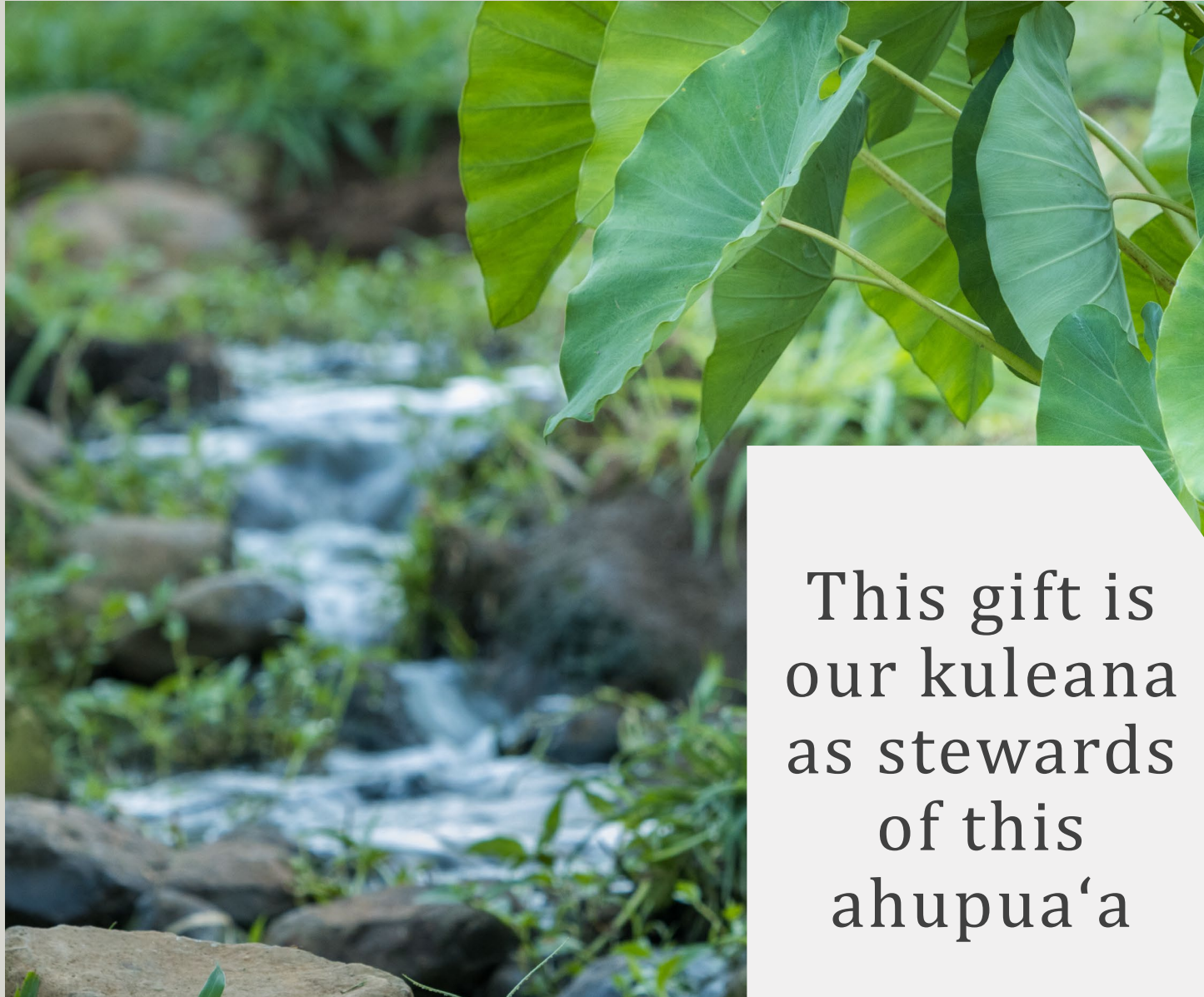
'Iole Global Resiliency Hub





‘Āina ‘Iole

- A historic traditional ahupua‘a in Kohala
- Just over 2,400 acres of land
- A diverse environment
- Significant historical sites
- Rich Agricultural lands
- Deep cultural significance



This gift is
our kuleana
as stewards
of this
ahupua'a



Current Uses



Agriculture



Hosting Facilities



Education &
Community Programs



What does it
mean to be
community of
place
practitioners?





Partnerships grow collective action

- University of Hawai'i
- Arizona State University
- Hawai'i Community Foundation
- Kamehameha Schools & Hawaiian Electric Industries





A Model for Global Resilience



Water

Improve our water systems



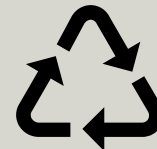
Energy

Become energy independent



Food

Grow our food security



Waste

Reduce our waste

Mahalo

‘Iole Global Resiliency Hub
info@iolehawaii.org



Office of Hawaiian Affairs
Meeting of the Board of Trustees
July 15, 2022
10:00 A.M.

III. Executive Session

Consultation with Kumabe HR LLC, Board Counsel Robert Klein, re: questions and issues pertaining to the Board's powers, duties, privileges, immunities, and liabilities regarding the Board's evaluation instrument and goals in its performance appraisal of OHA's Chief Executive Officer pursuant to HRS§92-5(a)(2) and (4). *