

STATE OF HAWAII
OFFICE OF HAWAIIAN AFFAIRS
560 N. Nimitz Hwy, Suite 200
HONOLULU, HI 96817

Minutes of the Office of Hawaiian Affairs Committee on Resource Management
April 25, 2018
10:00 a.m.

ATTENDANCE:

Trustee Dan Ahuna
Trustee Rowena Akana
Trustee Keli'i Akina
Trustee Peter Apo
Trustee Colette Machado

Trustee Carmen Hulu Lindsey
Trustee Robert K. Lindsey, Jr.
Trustee John Waihe'e, IV
Trustee Leina'ala Ahu Isa

STAFF PRESENT:

Kamana'opono Crabbe, CEO
Alvin Akee
Albert Tiberi
Carol Ho'omanawanui
Claudine Calpito
Crayn Akina
David Laeha
Davis Price
Jim McMahan
Kauikeaolani Wailehua
Liana Pang
Lisa Victor
Lehua Itokazu
Lōpaka Baptiste
Miles Nishijima
Mehana Hind
Melissa Wennihan
Momilani Lazo
Paul Harleman
Raina Gushiken
Sterling Wong

Guest and Community:

Germaine Meyers
Mason Chock, Council Member, Kaua'i
Rodney Lee, SPIRE
Kamealoha Smith
Pomaikealoha Kekaula
Keanui Kekaula
Sam Chung
William Yuen, Esq

I. CALL TO ORDER

Committee Chair Hulu Lindsey calls the Committee on Resource Management to order at 10:02 a.m., noting for the record that the following Trustees are present:

	Present	Excused	Comments
TRUSTEE LEI AHU ISA	X		
TRUSTEE DAN AHUNA	X		
TRUSTEE ROWENA AKANA			Arrives at 11:43 a.m.
TRUSTEE KELI'I AKINA	X		
TRUSTEE PETER APO	X		
TRUSTEE ROBERT LINDSEY	X		
TRUSTEE COLETTE MACHADO	X		
TRUSTEE JOHN WAIHE'E			Arrives at 10:12 a.m.
CHAIRPERSON HULU LINDSEY	X		
TOTAL	7		
At the Call to Order, there are seven (7) Trustees present.			

Committee Chair Hulu Lindsey asks for a motion to approve a 72-hour waiver for materials under agenda item III. A and V.A.

Trustee Dan Ahuna moves to approve the 72-hour waiver, for materials under agenda item III. A and V.A. Trustee Robert Lindsey seconds the motion						
	1	2	'AE (YES)	'A'OLE (NO)	KANALUA (ABSTAIN)	EXCUSED
TRUSTEE LEI AHU ISA			X			
TRUSTEE DAN AHUNA	X		X			
TRUSTEE ROWENA AKANA						Not present at time of vote
TRUSTEE KELI'I AKINA			X			
TRUSTEE PETER APO			X			
TRUSTEE ROBERT LINDSEY		X	X			
TRUSTEE COLETTE MACHADO			X			
TRUSTEE JOHN WAIHE'E						Not present at time of vote
CHAIRPERSON HULU LINDSEY			X			
TOTAL VOTE COUNT			7			
MOTION: [] UNANIMOUS [X] PASSED [] DEFERRED [] FAILED						
Motion passes with seven (7) YES votes and two (2) EXCUSED votes.						

II. PUBLIC TESTIMONY

Committee Chair Hulu Lindsey announces that she will be moving agenda item III. B. to go first with public testimony. She states this will provide continuity with Trustee Dan Ahuna's presentation and Kamealoha's testimony. She calls Kamealoha to the table.

Kamealoha Smith greets the Trustees and introduces himself along with Pomaika'i and Keanui Kekaula. He expresses appreciation to the board for allowing them to share photos and information regarding the severe damage that has happen on Kaua'i due to flooding. He states that he works for a non-profit called Kaiāulu. His concentration at present is with the homeless, local residents, farmers, and fisherman. He speaks of the Kealia Bush People, a family of twenty, who were almost washed away.

His effort is to help coordinate food to the people on the beaches. He shares specific examples and photos of his community; the eastside. He expalins his job was using a surfboard to help rescue animals as this area is known for livestock. He states his reason for today is to request funding and to assist the farms in the area to get back-up and running. This is the first time they are coming to OHA for any request and if any other information is missing or needed, please let him know. One of the farms affected, he mentions is Kealia Farm.

Trustee Robert Lindsey states that local news has reported medical issues on Kaua'i and asks *how many children were affected in the Kealia area?* He also inquires about medical issues.

Kamealoha Smith states he does not have a number for affected children. Most of the people he has helped have pneumonia or bad colds. He is attempting to find a way to get the sick to hospitals since nurses and doctors are unable to travel to them.

Committee Chair Hulu Lindsey asks if the roads are passable, between where they are, and between central Kaua'i.

Kamealoha Smith replies yes but it could flood again if more rain comes.

Kenui Kekaula introduces himself and his brother Pomaikealoha Kekaula, both owners of Pomai Kulolo LLC (established in 2014). He gives a brief background on his schooling, learning how to make haupia, and selling products on the side of the road. Pomai Kulolo produces about 10,000 – 16,000 lbs. of taro a month. He expresses that Kaua'i taro farmers are the affected along with farmers on outer islands.

Pomaikealoha Kekaula explains the interconnection of the lo'i farms on Kaua'i and on the outer islands. He explains their 100-acre farm was flooded along with most Kaua'i farms. The majority of taro farms are commercial, large farms and they do volume discounts. The recovery efforts are time-sensitive and illustrates how the flood water flushes out all the nutrients and it becomes standing water. The taro is shocked and stops growing, causing the farmers to harvest to save existing taro. This causes the supply to drop while the demand stays the same. There is a shortage in taro, thus causing the prices to go up. This will cause a ripple-effect toward the other famers and business statewide. The objectives he states are to restore the infrustructure and production

land to prevent large sacle shortages. The second objective is to build production capacity on existing farms. The third objection is to do risk mitigation, if flooding happens again.

Kamealoha Smith states there is an opportunity for Pomai Kulolo to partner with Kaiāulu. They explain that the purchase of two excavators would help their kalo farm as well as all the kalo farms in the community. He wants the entire community to engage in better practices so everyone can flourish. He is excited for future possibilities.

Trustee Colette Machado emphasizes that no decision-making will occur today since this issue is listed under the *Public Testimony* section of today's agenda. She states, should there be additional follow-up by staff, there can be serious discussions on options that we could explore. She thanks them for their presentation.

Committee Chair Hulu Lindsey thanks Kamealoha and the Kekaula brothers for coming over to speak to the Board. She announces that she will be moving Trustee Ahuna and his guest to speak next under *Public Testimony* to keep the subject context together.

Trustee Dan Ahuna calls upon Kaua'i Representative Mason Chock. Trustee Ahuna thanks Kamealoha and the Kekaula brothers. He states that it is important to hear testimony from their Kaua'i beneficiaries. It is also important to see how Kaua'i affects others. He announces that he was able to visit the different devastated areas of Kaua'i and collect data. He speaks of the Hawai'i Community Foundation, who Rep. Mason Chock is working with, and which has the capacity to work with non-profits that need support. He also mentions that OHA has the capacity to work with many other organizations to assist people in need.

Trustee Ahuna states that a survey was created and data-collected by community members on the ground. The survey identified the immediate needs in order to facilitate aid:

- Homes: 217 people (80%)
- Farm and Agriculture lots: 41 people (15.2%)
- Store and Businesses: 60 (22.2%)
- Loss of Equipment: 40 people (14.8%)

Approximately 310 children are affected. Meanwhile, 85.2% experience loss of work. Respondents totaling 91% experienced motor vehicles that were damaged or swept-away. This database has everything listed on what people need all in one place. He has collected data on Native Hawaiians in the areas and states that with OHA's capacity and Kaua'i's capacity, we can assist many people.

Councilmember Mason Chock greets the Trustees. He states that he is also the President of the Kupu A'e Leadership program and active with the Aloha 'Āina projects on Kauai. He is President of Maluiahia, and in partnership with the Waipa foundation. He states that community focus is on immediate needs. More will become clear as they move forward.

The number is high, 305 presently, and expected to grow as the survey is ongoing. There was no loss of life, but many need the assistance to help get back on their feet. Many are land-locked due to 16 landslides; water is blocked and stagnant.

He appreciates the presence of Kaiaulu and his description of his one area of focus; the homeless and infrastructure. He sees this as an opportunity to look at the long-term vision for infrastructure and states that most irrigation systems are controlled by corporate interest. He states that there is an opportunity for the stakeholders to be a part of the collaboration of the future. He also shares the dilemma that people are having with insurance and without insurance among kalo farmers, and different business owners.

He states he is here to answer any questions the board may have regarding the survey, and their next steps and vision.

Committee Chair Hulu Lindsey asks - *Where are the donations going?*

Council Member Mason Chock states the donations are going to Hawai'i Community Foundation.

Committee Chair Hulu Lindsey inquires about Zuckerberg's million-dollar donation.

Council Member Mason Chock states that Zuckerberg's million-dollar donation is being split; among a few organizations. KEO is a service directly helping the homeless. He is not sure where the rest of the money is going. He expresses the need for FEMA and is not sure if the money would go to the right people with the right needs.

Trustee Dan Ahuna thanks Mason. He then poses the question - *How does OHA participate or help?* He recommends that the moratorium be lifted and says the Kūlia grants have been stopped.

Trustee Chair Machado corrects Trustee Dan Ahuna by saying that the Kūlia grants have not stopped; time ran out to encumber the funds.

Trustee Dan Ahuna hopes some of the money can be used towards the relief efforts.

Trustee Robert Lindsey responds to Trustee Dan Ahuna's request. He hopes OHA can figure out how they can and how much they can help.

Committee Chair Hulu Lindsey agrees with Trustee Robert Lindsey. She states that conversations need to happen with the administration and the Board Chair to see how OHA can help. She recognizes the problem to be immediate.

Trustee Peter Apo speaks briefly on the fiscal policies and reminds the trustees that they are under investigation by the Attorney General. OHA must be very clear on the legality of:

- how the money is transferred;
- who the money goes to; and
- what the money is spent on

Trustee Chair Machado cautions the Trustees on how they comment on the role of the investigation in a public setting.

Trustee Peter Apo replies that he is quoting things that already publicly reported in the newspapers.

Trustee Chair Machado thanks Trustee Apo for the clarification.

Trustee Lei Ahu Isa shares her experience of being on Kauaʻi right after Hurricane Iniki. After seeing the photos, she believes the recent events are worse than Iniki. She thinks the need is great.

Trustee Chair Machado tells Councilman Mason Chock that his presentation was very compelling; she sees the magnitude of the destruction. All of the presentations made today impressed her.

Trustee Keliʻi Akina extends his gratitude to Councilman Mason Chock and the Kekaula brothers for their presentations. He also commends Trustee Dan Ahuna on his initiatives to inform the Trustees. He asks if Kamanaʻo can share in general what is the capacity of our administration to assess or help in dealing the Kauaʻi situation and what does Kamanaʻo see from his perspective.

Kamanaʻopono Crabbe replies by sharing that there are OHA community outreach staff, two on Kauaʻi island and one located in Oʻahu. He sees OHA as being supportive and aiding Hawaiʻi Community Foundation (HCF) or other volunteer groups in whatever the board determines as specific needs. OHA can aide other services that OHA can provide such as the Native Hawaiian Revolving Loan Fund (NHRLF) and consumer micro-loans. He will need to regroup with his executive team, determine a plan, and go over any concerns. Then by using the detailed survey, he can help to specify where the money will directly go.

Trustee Dan Ahuna refers to a handout that lists very specific needs of the people affected. He reminds the Trustees that 1/3 of the people affected are OHA beneficiaries.

Trustee Chair Machado shares there is another possibility without lifting the moratorium. It would be an authorization of the budget, such as a realignment, in an action item form. Trustee Machado also mentions that she is working on a revised report of the Kūlia grants. It needs a good scrub down, but this is another option besides lifting the moratorium.

Trustee Peter Apo states that he cares about Kauaʻi and shares that he wants to be sure OHA does it right.

Trustee Chair Machado reassures Trustee Dan Ahuna that he has the support of all the trustees, but states that they must consider the options. The approval will come through as an action item in the Resource Management Committee.

Committee Chair Hulu Lindsey states the trustees expect administration to assess and then make a proposal to the board. Administration should report what funds are available and the board will take action.

Trustee John Waihee shares that any money given directly to Kaua'i County does not need procurement. This could be one way to transfer funding; government-to-government.

Kamana'opono Crabbe states this will be a part of the assesment.

Trustee Colette Machado states the approach would look closely at the authorization and how much is available under the current authority.

Trustee Dan Ahuna says thank you to all the Trustees.

Trustee Chair Machado thanks Trustee Ahuna for taking the lead. Today many details were pointed out.

Public testimony continued

Committee Chair Hulu Lindsey calls upon Germaine Meyers.

Germaine Meyers states her name for the record and shares she will speak on items IV. B. & V. A.

*Two separate handouts are passed out.
See attachments a. and b. of minutes.*

She speaks on both handouts regarding the LLCs owned by OHA and wants to know why the Ho'opakeu LLC was not part of the presentation given by Mona Bernardino on May 25, 2018. She continues her testimony on the LLCs, asking the Trustees to look at the policies created by OHA for the LLCs policies and directives. She also inquires to the amount of grant money given to different organizations.

Trustee Rowena Akana states that LLC-creation needs the approval of the Board. She requests that the board investigate on the Ho'opakeu LLC creation and on its purpose.

Committee Chair Hulu Lindsey states that this LLC issue will list on the agenda at a different time. She thanks Germaine for her testimony and wishes to move on with the meeting.

Davis Price approaches the board table and states that he would like to share his thoughts. He states that a memo was sent to all the Trustees informing of the many false statements that were made about him and shared online. He shares that simply stating the facts does not indicate or

clearly tell the story of what happened. He states there are possible liability issues if people are defamed.

III. NEW BUSINESS

Item A. - deferred.

Committee Chair Hulu Lindsey thanks Davis Price.

She announces that item III. A. Action Item RM 18-04: Approval of Amendments to “Office of Hawaiian Affairs Trust Fund Spending policy, as Amended.” - is now deferred.

She announces she would like to mahalo the following staff members: Max, Paul, Gloria, Raina, and David Laeha for trying very hard to amend the fiscal reserve section of the spending policy. The need of possibly lifting the fiscal reserve to help the people of Kaua’i was the intention of 18-04. After receiving twelve pages of comments from SPIRE, she felt it was necessary to defer the item.

She covers the background of how OHA’s fiscal reserve came under scrutiny in the 2009 auditor’s report. The auditor’s report recommended a cap on the fiscal reserve. Since 2009, there has been no substantial progress made.

She states that on December 4, 2015, SPIRE listed the following objectives with respect to their work on the fiscal reserve:

1. Work with Administration to determine on how to best handle the unexpended and lapsed funds;
2. Propose adjustment to the related policies and procedures; and
3. Determine the net effect and recommend option going forward.

She notes that these objectives went unfulfilled and no specific recommendations made. Prior to SPIRE’s work, the Fiscal Sustainability Plan (FSP) efforts have also failed to produce any results in terms of specific policy recommendations and proposals.

Regarding the FSP action item in 2016, the board explicitly tasked OHA Administration with the implementation of phase six and seven of the FSP. This included the development of an applicable policy and policy modifications with the deadline of July 1, 2017. There was no FSP implementation by administration.

Then we adopted a different strategy that consisted of shared working groups between members of both the board of trustees and administration. On March 29, 2017, an adopted motion established five working groups consisting of both members of administration and board of trustees.

Next, on December 13, 2017 Max Mukai, aide to Trustee Hulu Lindsey sent an email to the COO with a proposed schedule for committee meetings. The COO responded that there are not enough resources to participate in the committee meetings. Therefore, due to the COO's response, no subsequent meetings were scheduled.

The FSP efforts started in 2016 - two years ago. Despite the time and financial resources given to this project, as well as with SPIRE, the financial analyst – we have not achieved any measurable success.

Please note that action item RM #16-08 that requested the adoption of an FSP was an administration initiative, specifically by the CFO.

Furthermore, we then delegated the responsibility to develop the applicable policy and policy modifications that constitute the FSP to administration. She continues by saying in order for the FSP to be successful a new strategy must be adopted to ensure there is clear accountability and lines of authority. To achieve this level of accountability we recommend holding administration accountable for the development of the FSP before a specific deadline. If this is not feasible in the current environment, a new procurement solicitation for a new financial consultant must occur. This specific solicitation should include clear definitions, for the roles, responsibilities, deadlines, scope of work performed, as well as the specific project deliverables.

Trustee Hulu Lindsey makes it very clear that she is putting no blame on anyone and this is the status as of today. She wants to work with Administration to come to a conclusion, whether it is done in-house or put out for an RFP. She states that today she would like to give administration the twelve page comments by SPIRE along with the action item 18-04. Her request is that they come up with a draft proposal within 30 days.

Trustee Rowena Akana asks if the Board will be offering any guidance to administration regarding on what they want to see and incorporate.

Committee Chair Hulu Lindsey states there was a Fiscal Reserve workshop just a few weeks ago. She feels strongly that many policies that need to be written need to be done by attorneys or receive guidance by attorneys.

Trustee Rowena Akana states the land policy was written using an attorney from McCorristen's firm that worked with Trustee Hulu. She suggests that OHA use the same attorney to assist the administration in developing the new policies.

Trustee Dan Ahuna states that he is on the FSP LLC's working group and that his group has been meeting regularly. It does not make sense to him on why the FSP is not working out. His group has met with administration, worked on process, and on how to streamline. Today is the first time he is hearing any of the things Trustee Hulu is sharing. He wants to know if his work and the working group that he is Chair of is finished. He wants an answer.

Committee Chair Hulu Lindsey states that she has not received any deliverables from any working group. She suggests that maybe she is not the person to oversee the working groups and that maybe administration should take over.

Trustee Dan Ahuna shares his frustration by reiterating that many of them had working groups and each group was working. He wants to know what happened.

Trustee Robert Lindsey requests that they seek legal advice in reference to what she would like done. He thinks they may be in violation of the sunshine law.

Committee Chair Hulu Lindsey states the fiscal reserve is part of the spending policy as listed in the agenda.

Albert Tiberi states the focus should be on agenda item *fiscal reserve spending policy amendments*. He clarifies that Trustee Hulu has asked administration to work with Rodney to look into the FSP and implementation, which has multiple parts. His suggestion is if the discussion is not on the fiscal reserve and the action item, then the committee should move on and speak to administration after the meeting.

Committee Chair Hulu Lindsey states her concern was the fiscal reserve. Unfortunately, it is a part of the spending policy. She states the spending policy could change every month, if the board wanted to change it. Her focus was on the fiscal reserve - another area of funding considered by the board.

Trustee Keli'i Akina suggests that Committee Chair Hulu Lindsey list a discussion of the FSP on the next RM agenda. The board can then assess and perhaps consider action to move forward on it.

Trustee Rowena Akana asks for clarification on the fiscal reserve figure and would like to know if it is still three million dollars. She inquires if a policy is developed to determine the use of the funds, perhaps another million could be added for natural disasters. She believes this would alleviate the board coming back to make amendments in the future. She also believes the board needs legal advice and assistance while creating the policy.

Committee Chair Hulu Lindsey asks Chair Machado on where the board seek such legal advice.

Albert Tiberi states it is a combination of legal, investments, and spending and policy issues that the financial analyst could assist in. Something more specific could be sought after in an RFP or refer to someone already on the procurement list.

Trustee Rowena Akana states that you do not have to go through procurement when looking for attorneys.

Albert Tiberi states you must go through a professional services to hire an attorney.

Trustee Colette Machado replies to Trustee Akana and says that OHA has tried that and it did not work.

Committee Chair Hulu Lindsey reiterates that the committee deferred this item. She shares that her intent was to share that there is a problem and the problem needs fixing. She explains the reason on why the haste on the action item and the anticipation of needing money for Kaua‘i.

Trustee Colette Machado asks Lisa to come back to the table to speak on a memo dated April 24th with the subject headline: RM Committee Proposed Action Item 18-04. This memo outlines some concerns regarding the issue talked about today.

Lisa Victor states that she sent an email sharing her concern on the policy needing work and with issues missing. She acknowledges the email sent by Trustee Hulu Lindsey regarding resources. She further explains that the email coincided with the time they were getting ready for the Public Land Trust (PLT) review.

Kamana‘opono Crabbe states administration requests to see the twelve-page report by SPIRE. He invites Rodney to share on what the role and responsibility of the FSP working groups and implementations are. Administration would like clarity from SPIRE regarding the role and responsibility of each working group’s structure in terms of reporting and who is responsible and accountable.

Rodney Lee greets the board and shares that a request came from Trustee Hulu’s office to review the amendments of the policy itself. He recognizes the amount of work done and that work is now part of the due diligence process. He explains that part of the diligence process was not to stop the effort, but to guide, counsel, and protect the organization. The twelve-page opinion is not an attack of the work done. It is more to shed light on the things that need more attention paid to them.

Committee Chair Hulu Lindsey states that the comments made by SPIRE are respected, hence the deferment of the action item.

Rodney Lee thanks Trustee Hulu for deferring the action item. He appreciates the attempt to make the language clearer, but recognizes the challenge of the three audits and the on-going concerns. He shares the FSP is at the core of: the organization’s activities, incorporating what you believe your investments positions will be, and integrates how you deal with any debt you incur or liabilities, including fringe benefit and pensions. Most comments offered by SPIRE are towards structure in order to bring clarity for the auditors and beneficiaries. The Native Hawaiian Trust Fund (NHTF) offers an umbrella of complex policies that need definitions; commercial real estate policy and investments are just two.

SPIRE sent recommendations in 2015, which were not accepted. He respects the caution by everyone regarding this topic.

Trustee Keli‘i Akina thanks Rodney on his twelve-page critique. He feels that the due diligence is clearly appropriate. He agrees on the deferment of the action item. He states he is not implying blame onto anyone, but points out that from December 2016 to April 2018 there is no product in

place. He believes a discussion should take place to assess the situation, and then move forward quickly towards an FSP adoption.

Rodney Lee states that he supports that.

Committee Chair Hulu Lindsey thanks Rodney.

Trustee Rowena Akana asks for clarification regarding the reserve and states that it should not be a part of the spending plan, as a program. She states it should be separate.

Committee Chair Hulu Lindsey states that the proposal calls for it to be separate. The plan is to have a separate fiscal reserve and HDAP. All of it will become a part of the spending policy.

Trustee Rowena Akana states the changes can take a long time. She proposes that certain implementations happen one at a time, instead of all at once.

Rodney Lee explains the mechanics of the fiscal reserve presently states that the *board authorizes the fiscal reserve amount* is there; it is held in the NHTF. The auditor’s concern is pulling it from the NHTF, where that the amount is added to the 5%. The thought is to separate it.

Trustee Rowena Akana states she understands. She asks - *Do we have to wait for a whole plan that is fully together?*

Rodney Lee answers no; a separation could be made. He states the submission to him was in conjunction with the spending policy. It should be separated and it should not come from the same fund. The language should be written a certain way with legal counsel. The investment philosophy needs to be changed.

IV. EXECUTIVE SESSION

Committee Chair Hulu Lindsey thanks Rodney and asks for a motion to resolve into Executive Session.

Trustee John Waihe‘e moves to resolve into Executive Session.

Trustee Dan Ahuna seconds the motion.

Hearing no discussion **Committee Chair Hulu Lindsey** asks for a roll call vote.

Trustee John Waihe‘e, moves to resolve into Executive Session. Trustee Dan Ahuna seconds the motion.							
		1	2	‘AE (YES)	‘A‘OLE (NO)	KANALUA (ABSTAIN)	EXCUSED
TRUSTEE LEI	AHU ISA			X			

TRUSTEE DAN	AHUNA		X	X		
TRUSTEE ROWENA	AKANA			X		
TRUSTEE KELI'I	AKINA			X		
TRUSTEE PETER	APO			X		
TRUSTEE ROBERT	LINDSEY			X		
TRUSTEE COLETTE	MACHADO			X		
TRUSTEE JOHN	WAIHE'E	X		X		
CHAIRPERSON HULU	LINDSEY			X		
TOTAL VOTE COUNT				9		
MOTION: [X] UNANIMOUS [] PASSED [] DEFERRED [] FAILED						
Motion passes with nine (9) YES votes and zero (0) EXCUSED votes.						

The Board moved into Executive Session at 12:26 p.m.

The Board reconvened in Open Session at 1:31 p.m.

V. NEW BUSINESS

A. Action Item RM #18-05: Approval to accept resignation of OHA executives as managers of OHA LLCs. To implement a transition plan to streamline and downsize LLC operations, and to recruit a replacement LLC manager.

Trustee John Waihe'e moves to authorize the OHA administration to assess the feasibility, timing, and downsizing of the current LLCs operational structure and develop a transitional plan to existing LLC managers and report back to the RM Committee by June 30, 2018.

Trustee Colette Machado seconds the motion.

Trustee John Waihe'e moves to authorize the OHA administration to assess the feasibility, timing, and downsizing of the current LLCs operational structure and develop a transitional plan to existing LLC managers and report back to the RM Committee by June 30, 2018.

Trustee Colette Machado seconds the motion.

	1	2	'AE (YES)	'A'OLE (NO)	KANALUA (ABSTAIN)	EXCUSED
TRUSTEE LEI AHU ISA			X			
TRUSTEE DAN AHUNA			X			
TRUSTEE ROWENA AKANA			X			
TRUSTEE KELI'I AKINA			X			
TRUSTEE PETER APO						Left at 12:45 p.m.
TRUSTEE ROBERT LINDSEY			X			
TRUSTEE COLETTE MACHADO		X	X			
TRUSTEE JOHN WAIHE'E	X		X			
CHAIRPERSON HULU LINDSEY			X			
TOTAL VOTE COUNT			8			

MOTION: [] UNANIMOUS [X] PASSED [] DEFERRED [] FAILED

Motion passes with eight (8) YES votes and one (1) EXCUSED vote.

VI. COMMUNITY CONCERNS

Committee Chair Hulu Lindsey calls upon Germaine.

Germaine Meyers acknowledges the morning testimonies. She states the federal government says a non-profit is not suppose to give grant monies to a for-profit entity and refers to the handout she passed out earlier. She states everything she shares is public record. She concludes her testimony by asking the Trustees to consider sea-level rise.

Davis Price requests to answer one question asked by Germaine Meyers. *How can a for-profit entity have access to funds?* He states the answer goes back to a decision in 2007 when the board purchased the poi mill from a for-profit entity for \$185,000. He requests that the Trustees ask for the facts and to do due dilligence.

VII. ANNOUNCEMENTS

Committee Chair Hulu Lindsey announces there is a BOT meeting at 10:00 a.m. tomorrow.

VIII. ADJOURNMENT

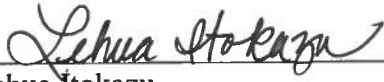
Trustee Colette Machado moves to adjourn the RM meeting.

Trustee Dan Ahuna seconds the motion.

Trustee Colette Machado moves to adjourn the RM meeting. Trustee Dan Ahuna seconds the motion.						
	1	2	'AE (YES)	'A'OLE (NO)	KANALUA (ABSTAIN)	EXCUSED
TRUSTEE LEI AHU ISA						Left at 1:34pm
TRUSTEE DAN AHUNA		X	X			
TRUSTEE ROWENA AKANA			X			
TRUSTEE KELI'I AKINA			X			
TRUSTEE PETER APO						Left at 12:45pm
TRUSTEE ROBERT LINDSEY			X			
TRUSTEE COLETTE MACHADO	X		X			
TRUSTEE JOHN WAIHE'E						Left at 1:42pm
CHAIRPERSON HULU LINDSEY			X			
TOTAL VOTE COUNT			6			
MOTION: <input type="checkbox"/> UNANIMOUS <input checked="" type="checkbox"/> PASSED <input type="checkbox"/> DEFERRED <input type="checkbox"/> FAILED						
Motion passes with seven (6) YES votes and three (3) EXCUSED votes.						


RM meeting adjourns at 1:44 p.m.

Respectfully submitted,



Lehua Itokazu
Trustee Aide
Committee on Resource Management

As approved by the Committee on Resource Management on August 15, 2018.



Trustee Carmen Hulu Lindsey
Committee Chair
Committee on Resource Management

ATTACHMENTS:

- Public Testimony (will be added to final)



Kaiāulu Pāpaloa





POMAI KULOLO, LLC

- **HOW WE STARTED...**
 - SOLE PROPRIETORSHIP ESTABLISHED IN 2007
 - INCORPORATED IN AUGUST 2014
- **FINDING OPPORTUNITY IN AN ESTABLISHED MARKET**
 - KULOLO AVAILABLE EVERYDAY, NOT JUST ON THURSDAY
 - FRESH POI
- **SURVIVAL AND GROWTH**
 - 9,600 TO 16,000 POUNDS OF TARO PROCESSED MONTHLY
 - 7 DAY A WEEK PROCESSING OPERATION
 - VERTICAL INTEGRATION: PURCHASE OF KAUAI TARO COMPANY



FLOODING ON KAUA'I IMPACTS HAWAII'NEI

- **SEVERE DAMAGE TO COMMERCIAL SCALE TARO AVAILABILITY**
 - UPWARDS OF 30,000 LBS OF TARO COME FROM KAUA'I FARMS TO POI MILLS SUCH AS OURS EVERY WEEK
- **RECOVERY EFFORTS ARE TIME SENSITIVE**
 - LIFE CYCLE OF TARO
 - DELAYS ARE NOT ALWAYS HOUR FOR HOUR
 - NO PLANTINGS NOW = LARGE SHORTAGES LATER
- **ECONOMIC IMPACT OF FLOODING ON KAUA'I TO POI AND NATIVE HAWAIIANS**
 - LAW OF SUPPLY AND DEMAND: TARO SHORTAGE VS TARO PRICE
 - SUBSTITUTE GOODS: EXPENSIVE POI VS CHEAP RICE



KAUA'I TARO PRODUCTION FLOOD LOSS MITIGATION

- **OBJECTIVE 1:** RESTORE INFRASTRUCTURE AND PRODUCTION TO COMMERCIAL TARO FARMS ON KAUA'I THAT PROVIDE PRODUCT TO NATIVE HAWAIIAN PROCESSING BUSINESSES AND THEIR CUSTOMERS.
- **OBJECTIVE 2:** BUILD ADDITIONAL PRODUCTION CAPACITY ON EXISTING FARMS TO MITIGATE PRODUCTION LOSS IN FUTURE FLOODS.
- **OBJECTIVE 3:** RESTORE PRODUCTION CAPACITY TO ABANDONED FARMS IN DIFFERENT WOKU TO SPREAD THE RISK OF INDUSTRY LOSS FROM LOCALIZED FLOODING.

KAUA'I TARO PRODUCTION FLOOD LOSS MITIGATION

- **METHOD:** PURCHASE, MANAGE, AND OPERATE EQUIPMENT NECESSARY TO RESTORE TARO PRODUCTION CAPACITY ON KAUA'I

- **FUNDING REQUEST:**

Excavator	Komatsu 60	\$100,000
Excavator	Komatsu 30	\$70,000
Equipment Operator	1 year funding	\$35,000
Repair/Service/Fuel	1 year maintenance	\$10,000
Hauling Between Farms		\$10,000
Administrative/Reporting Costs		\$25,000
Total Request		\$250,000

MAHALO NUI LOA



Claudine Calpito

From: Mehana <mehana@hawaii.edu>
Sent: Wednesday, April 25, 2018 10:04 AM
To: Claudine Calpito
Subject: Re: testimony

testimony below:

Aloha mai kakou,

Trustee Ahuna is very familiar with the devastation our communities are facing. Some families have lost absolutely everything, others sustained severe damage to their houses, and many lost livelihoods. Assessments of damage to the highway look like it will be along time so people will continue to be cut off from transport up and down the coast. Not only Halele'a with our 150 plus Native Hawaiian 'ohana but Anahola, Keapana, Wailua and other areas are hurting.

The community is not waiting though. People are working tirelessly to care for one another in many ways, with Hawaiian ohana and organizations, many of which OHA has supported in the past at piko of all of these efforts. Families have organized cleaning crews, transport by boat and jet ski down the coast, Waipa staff are helping with equipment to stabilize water ways and clear debris, they are making poi tomorrow to continue to get out food and buy kalo while it is still harvestable from the many patches that have been damaged, Malama Kaua'i is distributing food, water and cleaning supplies and coordinating many volunteers, and Hui Maka'ainana o Makana Hawaiian family members, are providing some of the only support out there to distribute food, supplies, and clear roads etc. No one is waiting for help.

Needs continue to emerge and be defined so it is important that funding not be directed so specifically to needs that are constantly changing, and that it benefit those at the community level. We especially ask that OHA support funding for jobs for community members who have already been helping with recovery efforts so that they may continue to assist their neighbors in rebuilding, even in the face of job loss in tourism and other sectors. We urge OHA to support these community efforts that are growing ever more coordinated daily so that we can keep our families working to meet the needs of their communities, help those hurt most and rebuild in a pono way for our communities future.

Mahalo,

Mehana Blaich Vaughan

Kalihiwai community member

Dr. Mehana Blaich Vaughan
Assistant Professor

Department of Natural Resources and Environmental Management,
Sea Grant College Program and Hui 'Āina Momona
University of Hawai'i at Mānoa
1901 East West Center Rd.
Honolulu, HI 96822

Claudine Calpito

From: Billy Kinney <billygup@gmail.com>
Sent: Wednesday, April 25, 2018 1:00 PM
To: Claudine Calpito
Subject: Support letter: OHA flood relief for Kaua'i

Aloha respected board members,

This is my letter of support for the release of funds by OHA to help with Kaua'i flood relief - particularly for hiring of staff and workers, from the community to help with clean up, rehabilitation, and rebuilding.

My name is Billy Kinney, age 35, from Hanalei, Kaua'i. I am currently a student in the English department at UH Mānoa, and regret having to aid my community from afar. However, I have personally witnessed, time and time again, that when we face change and turmoil we have done it with the resiliency and resolve of our collective ancestors.

I do however support the release of OHA funds for Kaua'i flood relief - particularly for the hiring of community members to help with rehabilitation and rebuilding. In respect of all the aide and efforts, from everyone, to assist in the aftermath of the worst flooding I have ever seen, I've been made aware of the fact that families are still in the need of assistance. Additionally, as rebuilding has started for some families, the acquisition and distribution of materials will require a great amount of logistical help. I humbly testify in support of OHA releasing of funds for Kaua'i flood relief efforts.

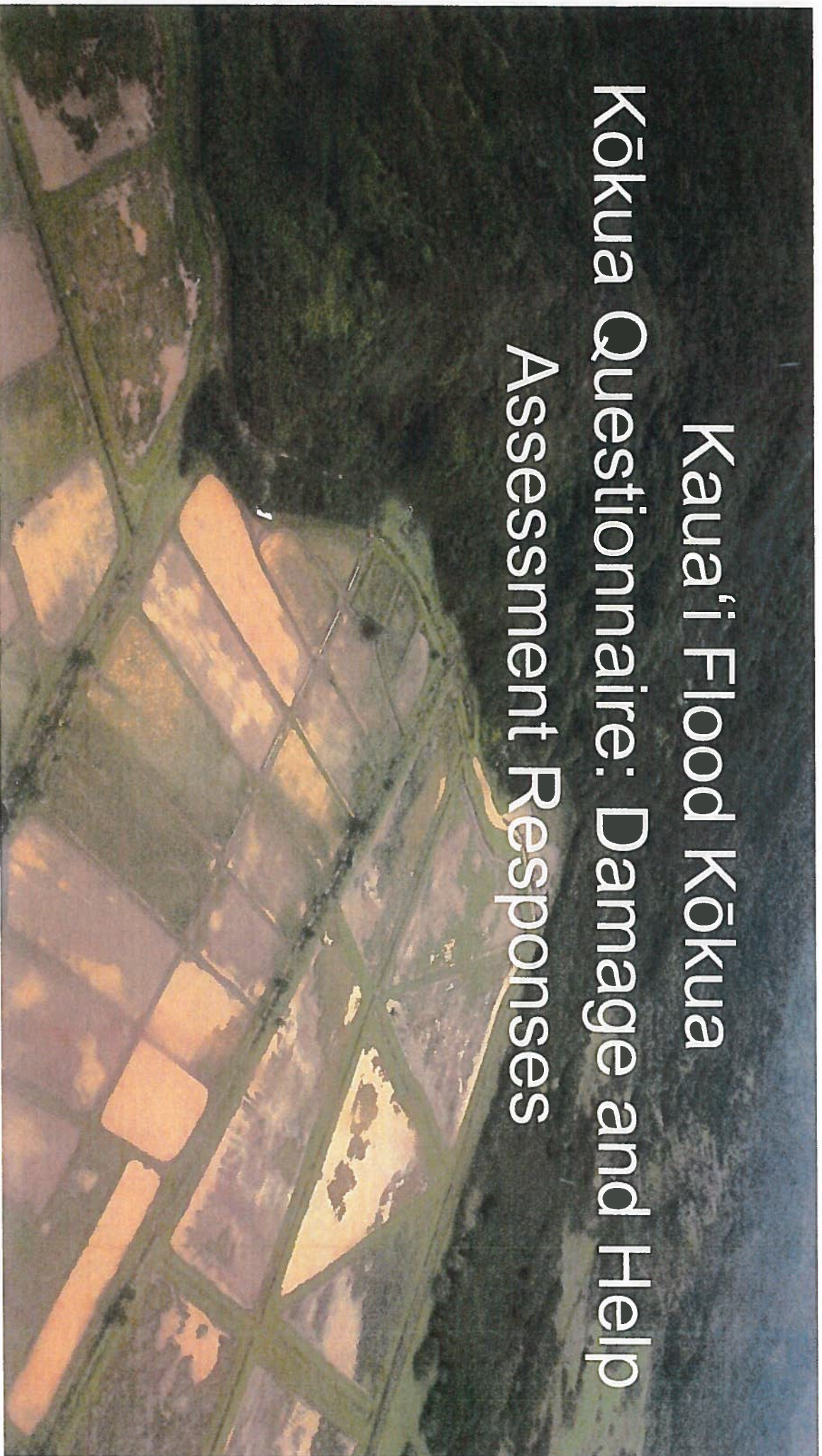
Mahalo for all that each and everyone of you have done and continue to do.

E mālama,

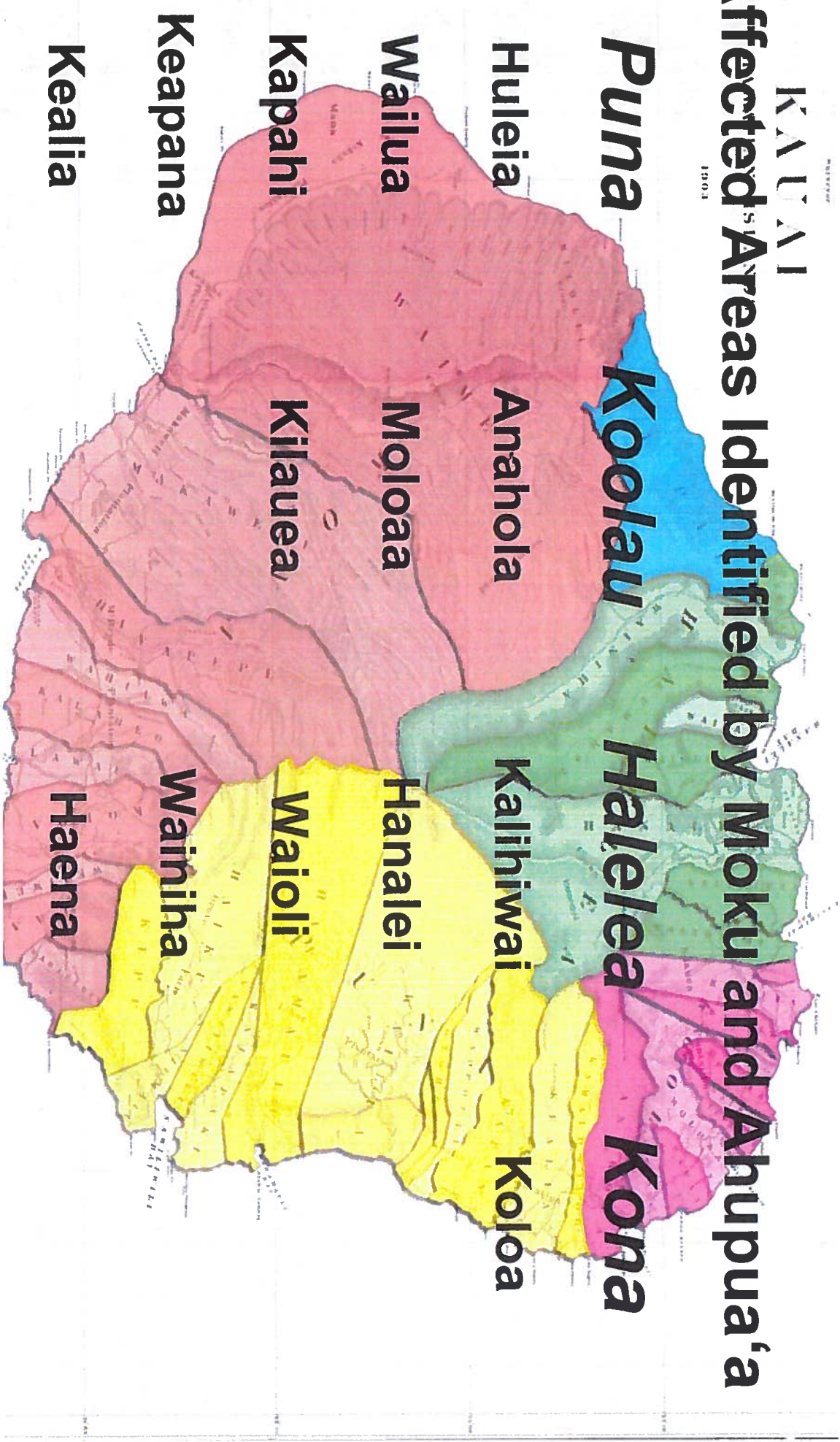
Billy Kinney

Kaua'i Flood Kōkua

Kōkua Questionnaire: Damage and Help Assessment Responses

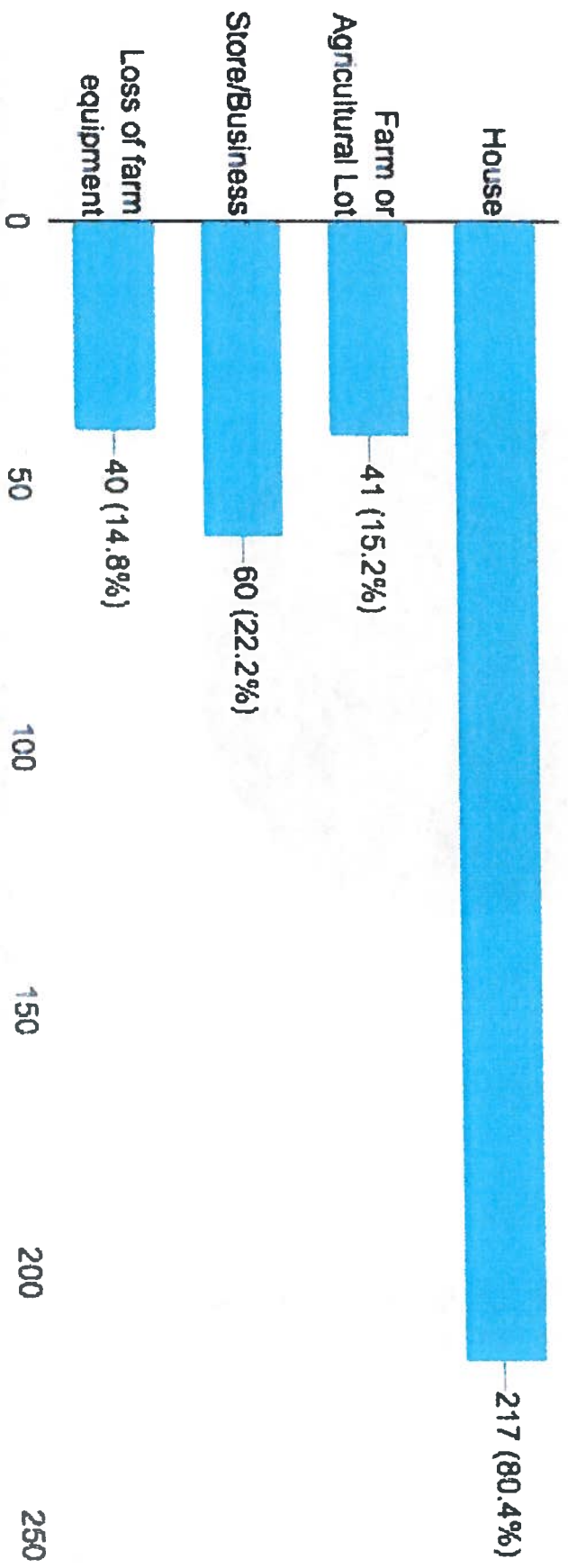


KAUAI
1901
Affected Areas Identified by Moku and Ahupua'a



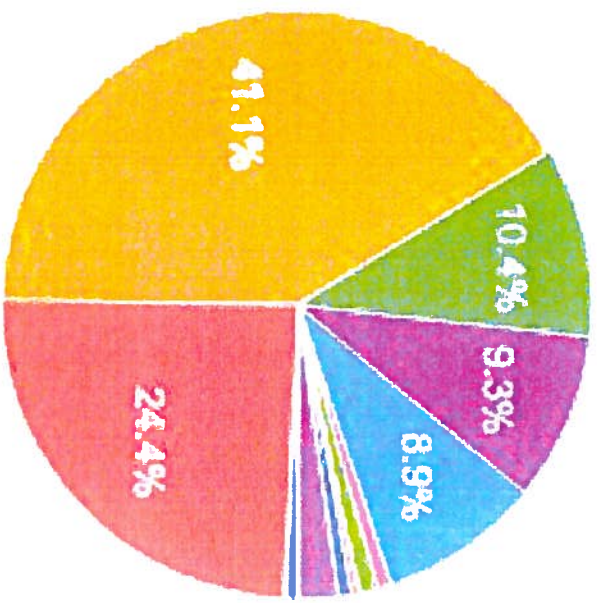
Types of property affected (check all that apply):

270 responses



Number of adults in household affected:

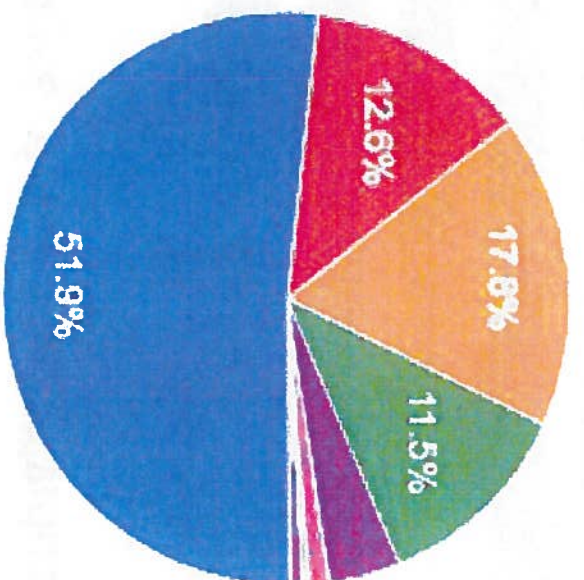
270 responses



- 0
- 1
- 2
- 3
- 4
- 5
- 6
- 7

Number of children in household affected:

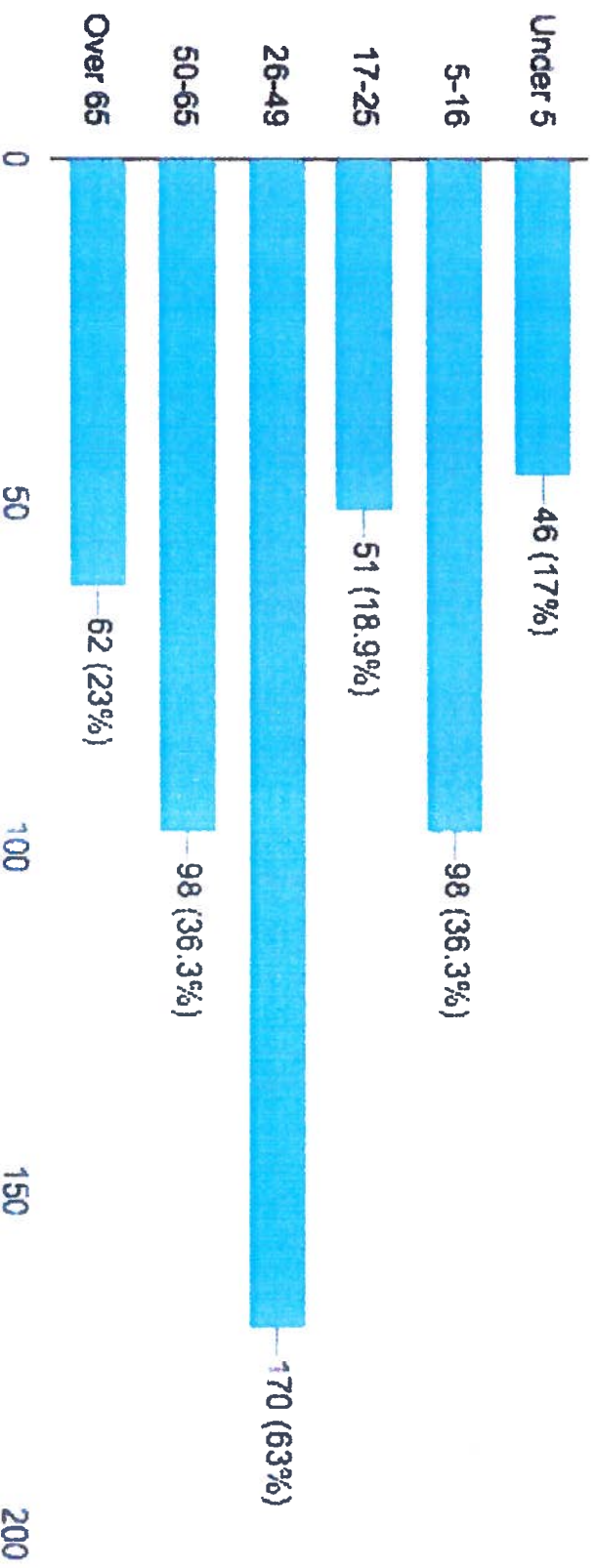
270 responses



- 0
- 1
- 2
- 3
- 4
- 5
- 6
- 7

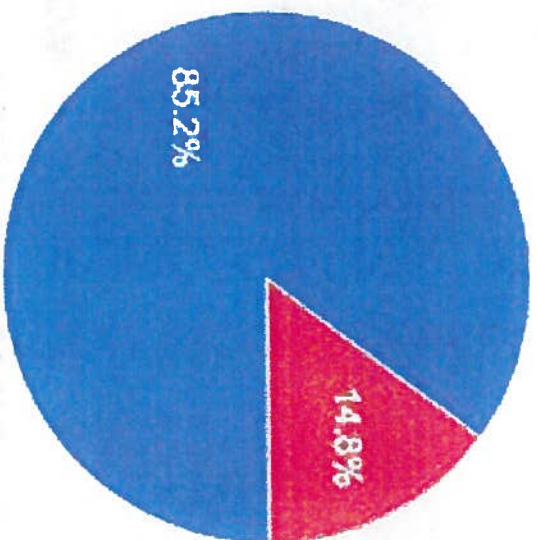
What are the ages of ALL the individuals affected?

270 responses



Have you or anyone in the household experienced a loss of work or income as a result of the flooding?

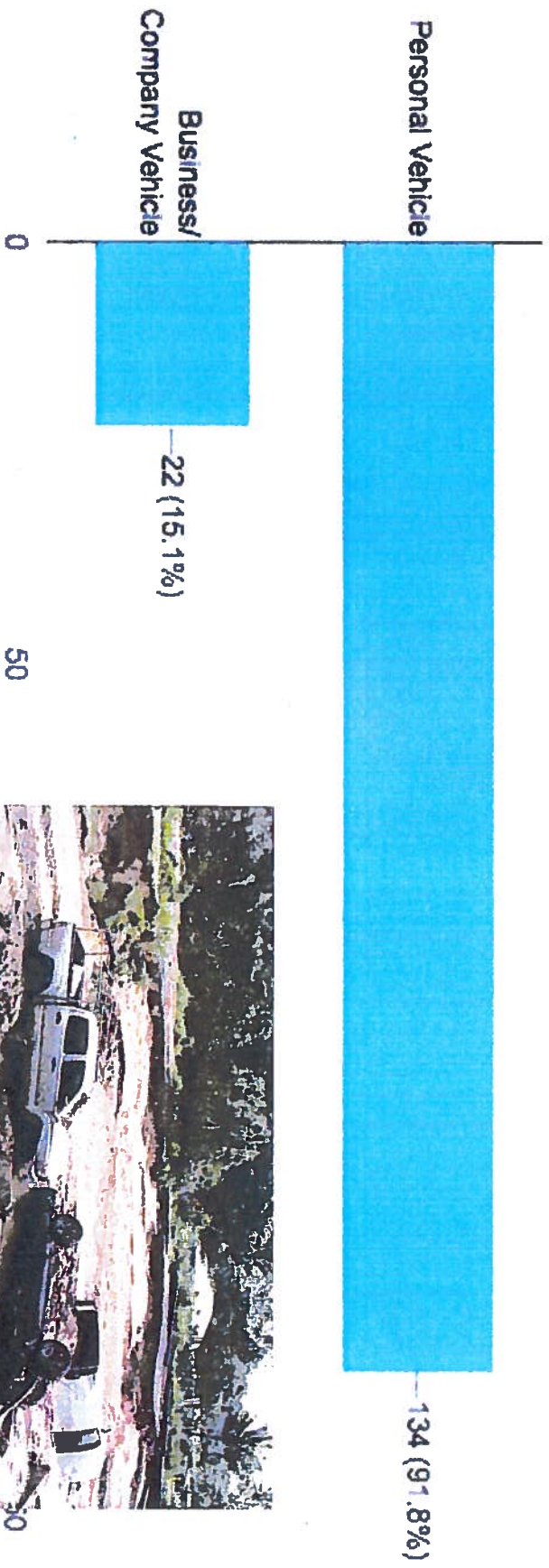
270 responses



● Yes
● No

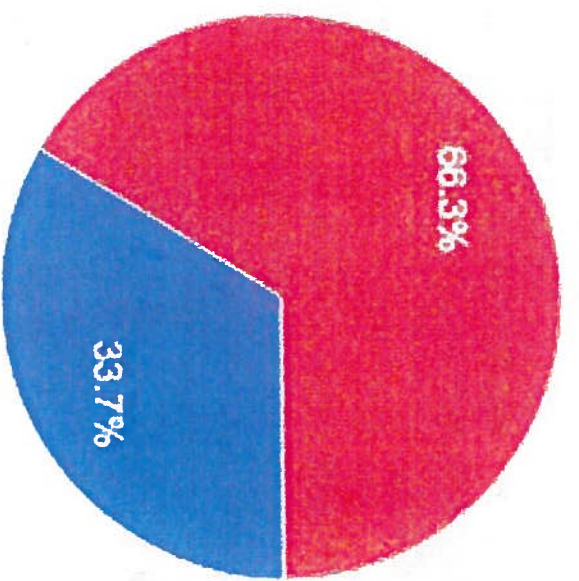
Were your vehicles/mode of transportation swept away or damaged? If YES, indicate below.

146 responses



Are you of Native Hawaiian Ancestry?

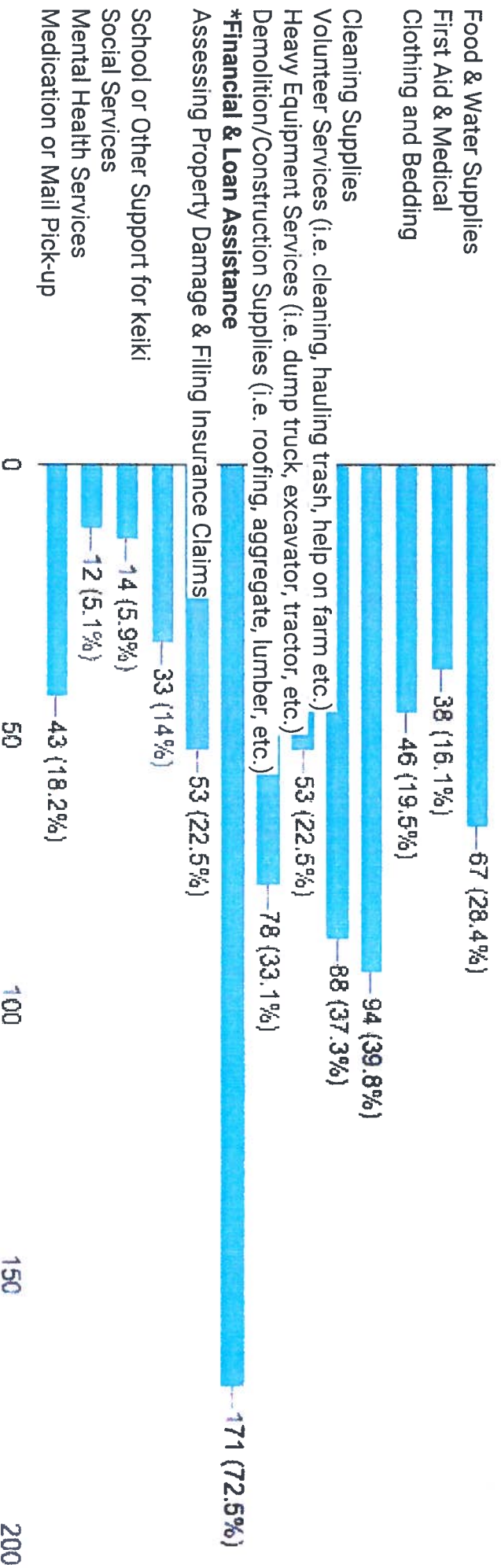
270 responses



- Yes
- No

Please indicate the type of help or services needed:

236 responses



HO'OPAKEU LLC

Articles of Organization for Limited Liability Company: Ho'pakeu LLC

Created on: October 30, 2015

Created by: Mona Bernardino, Attorney in Fact for: Kaman'opono M
Crabbe, Manager

Managers: Kamana'opono M. Crabbe, Ph.D.
Lisa Victor
Hawley Iona

Documents: 1) State of Hawaii Department of Commerce and Consumer
Affairs-Business Registration Division

Articles of Amendment to Change Limited Liability Company Name: From Ho'pakeu LLC to Ho'opakeu LLC

Filed on: November 5, 2015

Filed by: Mona Bernardino, Attorney in Fact for: Kaman'opono M
Crabbe, Manager

Documents: 1) State of Hawaii Department of Commerce and Consumer
Affairs-Business Registration Division
2) United States of America (USA) Internal Revenue Services
(IRS) Form 990 of Hi'ilei Aloha LLC 2015

Address Change: Ho'opakeu LLC

Filed on: July 15, 2016 (Received on August 3, 2016)

Filed by: Kaman'opono M Crabbe, Manager

Documents: 1) State of Hawaii Department of Commerce and Consumer
Affairs-Business Registration Division

Articles of Termination: Ho'opakeu LLC

Filed on: June 28, 2017 (Received on June 29, 2017)

Filed by: Kaman'opono M Crabbe, Manager

Documents: 1) State of Hawaii Department of Commerce and Consumer
Affairs-Business Registration Division

EXHIBIT 5

Subentities

Hi'iilei Aloha LLC is the parent organization of three subentities: Hi'ipaka LLC, Hi'ipoi LLC, and Hi'ikualono LLC. Hi'iilei also provides administrative oversight and assistance to Ho'okele Pono LLC (a nonprofit focused on economic development) and its subentity Ho'okipaipai LLC.

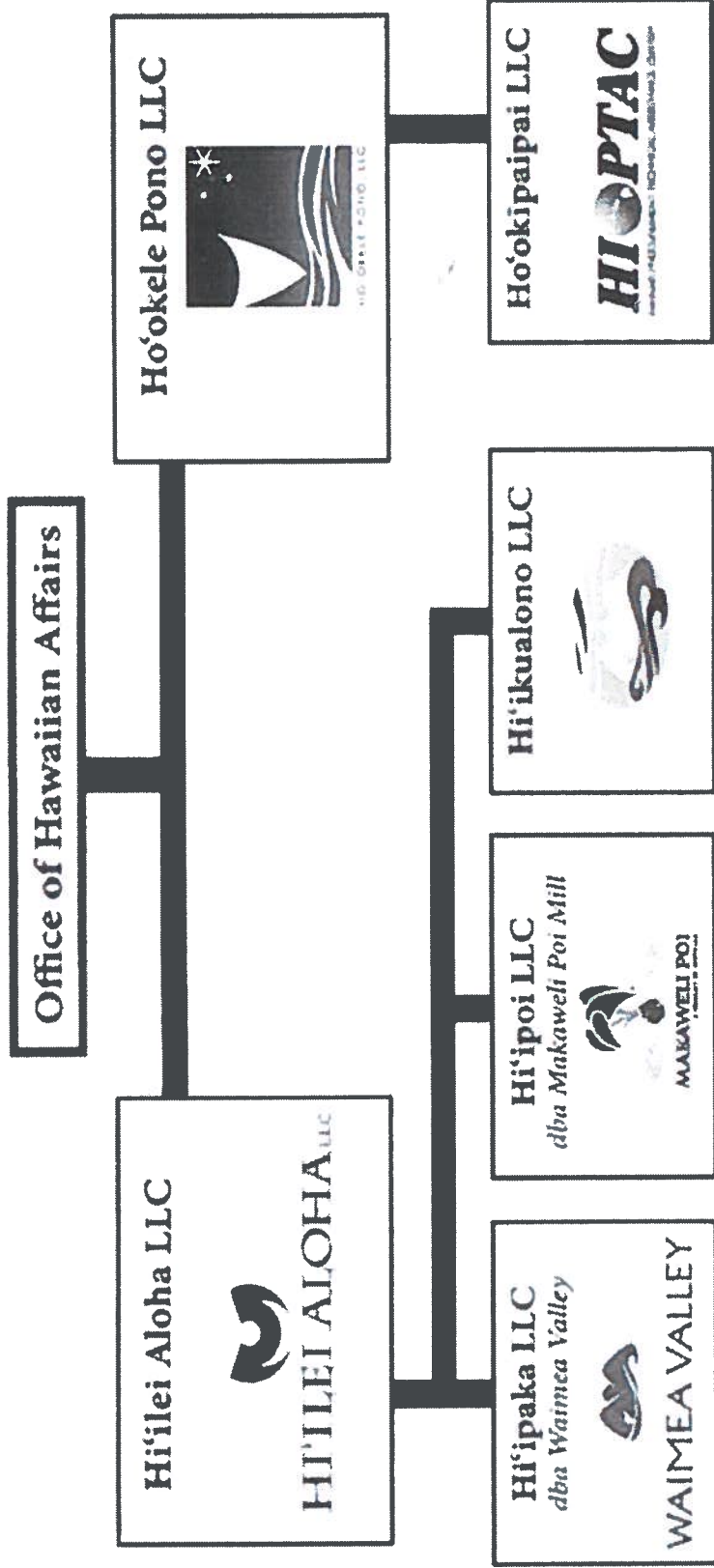


Exhibit 6

OHA'S LIMITED LIABILITIES

	Compensation Clyde Nam'u'o	Compensation Mona Bernardino	OHA Grants/Assets/Income HI'ILEI ALOHA LLC	% of OHA ANNUAL BUDGET to Mona B.	OHA Grants/Assets/Income HI'IPAKA LLC	OHA Grants/Assets/Income HI'IPOI LLC	OHA Grants/Assets/Income HI'IKUALONO LLC	OHA Grants/Assets/Income HO'OKELE PONO LLC	OHA Grants/Assets/Income HO'OKIPAI LLC
2007	\$ -	\$ -	\$ 100,000	0%	\$ -	\$ -	\$ -	\$ -	\$ -
2008	\$ -	\$ -	\$ 534,823	0%	\$ 17,324,385	\$ 391,865	\$ -	\$ -	\$ -
2009	\$ 140,289	\$ 106,389	\$ 1,457,537	7%	\$ 3,077,660	\$ 244,549	\$ -	\$ -	\$ -
*2010	\$ 136,459	\$ 135,120	\$ 1,484,886	9%	\$ 2,805,437	\$ 298,427	\$ 0	\$ -	\$ -
2011	\$ 156,305	\$ 130,892	\$ 2,074,740	6%	\$ 3,343,545	\$ 276,087	\$ 0	\$ 7,706	\$ 13,753
TOTAL	\$ 433,053	\$ 372,401	\$ 5,651,986	7%	\$ 26,551,027	\$ 1,210,928	\$ 0	\$ 7,706	\$ 13,753

	Compensation Kaiyana'i'opono Grabbe	Compensation Mona Bernardino	OHA Grants/Assets/Income HI'ILEI ALOHA LLC	% of OHA ANNUAL BUDGET to Mona B.	OHA Grants/Assets/Income HI'IPAKA LLC	OHA Grants/Assets/Income HI'IPOI LLC	OHA Grants/Assets/Income HI'IKUALONO LLC	OHA Grants/Assets/Income HO'OKELE PONO LLC	OHA Grants/Assets/Income HO'OKIPAI LLC
2012	\$ 140,166	\$ 139,023	\$ 1,250,240	11%	\$ 3,632,191	\$ 150,571	\$ 0	\$ 4,467	\$ 17,322
2013	\$ 153,809	\$ 131,529	\$ 1,440,950	9%	\$ 4,435,089	\$ 150	\$ 15	\$ 664	\$ 23,701
2014	\$ 154,847	\$ 138,350	\$ 2,627,456	5%	\$ 5,276,821	\$ -	\$ 14	\$ 55	\$ 31,891
2015	\$ 154,692	\$ 148,349	\$ 662,090	22%	\$ 5,963,441	\$ 108,000	\$ 0	**\$26	\$ 33,720
2016	\$ 154,081	\$ 152,618	\$ 645,531	24%	\$ -	\$ -	\$ 0	\$ 0	\$ 16,170
TOTAL	\$ 757,595	\$ 709,869	\$ 6,626,267	11%	\$ 19,307,542	\$ 258,721	\$ 29	\$ 5,212	\$ 122,804

GRAND TOTAL	\$ 1,190,648	\$ 1,082,270	\$ 12,278,253	9%	\$ 45,858,569	\$ 1,469,649	\$ 29	\$ 12,918	\$ 136,557
----------------	--------------	--------------	---------------	----	---------------	--------------	-------	-----------	------------

TOTAL OHA GRANTS/ASSETS/INCOME OF ALL LLCs - SINCE CONCEPTION TO 2016 (EXCLUDING HIIPAKA'S 2016): \$59,755,975

Exhibit 7

Financial Statements

DECLARATION ON ALL LLC's SINCE 2007

Limited Liability Companies

Since the Company is a limited liability company, **no member**, manager, agent, or employee of the Company **shall be personally liable for** debts, obligations, or liabilities of the Company whether arising in contract, tort, or otherwise for the acts or omissions of any other member, director, manager, agent, or employee of the Company, unless the individual has signed a specific personal guarantee. The duration of the Company is perpetual.

DECLARATION ON OHA's

Risk Management

Risk Management. OHA is **exposed to various risks of loss** from torts, theft of or damage to assets, errors and omissions, and employee injuries and illnesses.

FILED 10/30/2015 02:24 PM
Business Registration Division
DEPT. OF COMMERCE AND
CONSUMER AFFAIRS
State of Hawaii

STATE OF HAWAII
DEPARTMENT OF COMMERCE AND CONSUMER AFFAIRS
Business Registration Division
335 Merchant Street
Mailing Address: P.O. Box 40, Honolulu, Hawaii 96810
Phone No. (808) 586-2727



ARTICLES OF ORGANIZATION FOR LIMITED LIABILITY COMPANY
(Section 428-203 Hawaii Revised Statutes)

PLEASE TYPE OR PRINT LEGIBLY IN BLACK INK

The undersigned, for the purpose of forming a limited liability company under the laws of the State of Hawaii, do hereby make and execute these Articles of Organization:

I

The name of the company shall be:
HO'PAKEU LLC

(The name must contain the words *Limited Liability Company* or the abbreviation *L.L.C.* or *LLC*)

II

The mailing address of the initial principal office is:
711 KAPI'OLANI BLVD., SUITE 1430, HONOLULU, HI 96813 USA

III

The company shall have and continuously maintain in the State of Hawaii a registered agent who shall have a business address in this State. The agent may be an individual who resides in this State, a domestic entity or a foreign entity authorized to transact business in this State.

a. The name (and state or country of incorporation, formation or organization, if applicable) of the company's registered agent in the State of Hawaii is:
MONA BERNARDINO

(Name of Registered Agent)

(State or Country)

b. The street address of the place of business of the person in State of Hawaii to which service of process and other notice and documents being served on or sent to the entity represented by it may be delivered to is:

711 KAPI'OLANI BLVD., SUITE 1430, HONOLULU, HI 96813 USA

IV

The name and address of each organizer is:

74851C5

HO'OKELE PONO LLC

711 KAPI'OLANI BLVD., SUITE 1430, HONOLULU, HI 96813 USA

10/30/201547273

V

The period of duration is (check one):

At-will

For a specified term to expire on: _____
(Month Day Year)

VI

The company is (check one):

a. Manager-managed, and the names and addresses of the initial managers are listed in paragraph "c",
and the number of initial members are: 1

b. Member-managed, and the names and addresses of the initial members are listed in paragraph "c".

c. List the names and addresses of the initial managers if the company is Manager-managed, or
List the names and addresses of the initial members if the company is Member-managed.

KAMANA'OPONO M. CRABBE, PH.D.	711 KAPI'OLANI BLVD., SUITE 1430, HONOLULU, HI 96813 USA
LISA VICTOR	711 KAPI'OLANI BLVD., SUITE 1430, HONOLULU, HI 96813 USA
HAWLEY IONA	711 KAPI'OLANI BLVD., SUITE 1430, HONOLULU, HI 96813 USA
_____	_____
_____	_____

VII

The members of the company (check one):

Shall not be liable for the debts, obligations and liabilities of the company.

Shall be liable for all debts, obligations and liabilities of the company.

Shall be liable for all or specified debts, obligations and liabilities of the company *as stated below*, and have consented in writing to the adoption of this provision or to be bound by this provision.

We certify, under the penalties set forth in the Hawaii Uniform Limited Liability Company Act, that we have read the above statements, I am authorized to sign this Articles of Organization, and that the above statements are true and correct to the best of our knowledge and belief.

30

OCTOBER 2015

Signed this _____ day of _____

HO'OKELE PONO LLC - MONA BERNARDINO, CHIEF OF-
~~ERATING OFFICER~~ ATTORNEY IN FACT FOR: KAMANA'OPONO M CRABBE, MANAGER

M.B.

(Type/Print Name of Organizer)

(Type/Print Name of Organizer)

MONA BERNARDINO

10/30/201547273

FILED 11/05/2015 04:10 PM
Business Registration Division
DEPT. OF COMMERCE AND
CONSUMER AFFAIRS
State of Hawaii

Internet FORM LLC-2
1105201547616 7/2008

STATE OF HAWAII
DEPARTMENT OF COMMERCE AND CONSUMER AFFAIRS
Business Registration Division
335 Merchant Street
Mailing Address: P.O. Box 40, Honolulu, Hawaii 96810
Phone No.(808) 586-2727

ARTICLES OF AMENDMENT TO CHANGE LIMITED LIABILITY COMPANY NAME
(Section 428-204, Hawaii Revised Statutes)

PLEASE TYPE OR PRINT LEGIBLY IN BLACK INK

The undersigned, for the purpose of amending the articles of organization, do hereby as follows:

1. The present name of the limited liability company is:
HO'PĀKEU LLC
2. The name of the limited liability company is changed to:
HO'OPĀKEU LLC
3. The amendment was adopted with the consent of all, or a lesser number of, the members of the limited liability company as authorized by the operating agreement.

We certify, under the penalties set forth in the Hawaii Uniform Limited Liability Company Act, that we have read the above statements, we are authorized to make this change, and that the statements are true and correct.

Signed this 05 day of NOVEMBER 2015

MONA BERNARDINO, ATTORNEY IN
FACT FOR MANAGER K.M. CRABBE, PH.D., MANAGER

(Type/Print Name & Title)

(Type/Print Name & Title)

MONA BERNARDINO

(Signature)

(Signature)

137401C5

11/05/201547616

08/03/2016 10:11:17

808-586-2799

09:48:23 p.m. 08-19-2015

1/2

08/03/2016 10:11:17

LSS

Filing fees:

* This letter is to be signed by at least one of the remaining or NEW officers, members or managers of the above named entity

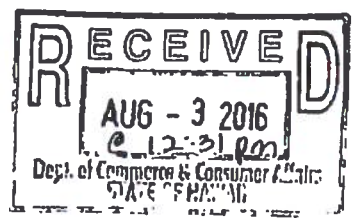
Profit Corporation/LLC \$25
Non Profit Corporation \$10
Optional expedite fee \$25
Archives Fee \$1

July 15, 2016

Date

Department of Commerce and Consumer Affairs
Business Registration Division
P O Box 40
Honolulu, Hawaii 96810

Re: Hoopakeu LLC
(Name of Entity)



The above named entity has changed its address:

From:

711 Kapi'olani Boulevard, Suite 1430
Honolulu, HI 96813

To:

711 Kapi'olani Boulevard, Suite 111
Honolulu, HI 96813

I certify under the penalties of the Hawaii Revised Statutes that I am authorized to make this change for the entity and the statements herein are true and correct in all material respects.

Sincerely,

Kamana'opono M. Crabbe Manager

* Signature and Office Title Held

Kamana'opono M. Crabbe, Ph.D.

Print Name

FILE # 137401C5

06/29/2017 10:10:53

WWW.BUSINESSREGISTRATIONS.COM

Nonrefundable Filing Fee: \$25.00

STATE OF HAWAII
DEPARTMENT OF COMMERCE AND CONSUMER AFFAIRS
Business Registration Division
335 Merchant Street
Mailing Address: P.O. Box 40, Honolulu, Hawaii 96810
Phone No. (808)586-2727

FORM LLC-11
7/2011



06/29/2017 10:10:53

FILED 06/29/2017 08:51 AM
Business Registration Division
DEPT. OF COMMERCE AND
CONSUMER AFFAIRS
State of Hawaii

ARTICLES OF TERMINATION
(Section 428-805, Hawaii Revised Statutes)

PLEASE TYPE OR PRINT LEGIBLY IN BLACK INK

The undersigned, submitting these Articles of Termination, certify as follows:

1. The name of the limited liability company is:

~~HO'OPAKEU LLC~~ **HO'OPAKEU LLC**

2. Please check one:

The notice was published on: _____
(Month Days Year)
in the _____ ; OR
(Name of Newspaper)

Publication was not made.

- 3. All debts, obligations, and liabilities of the limited liability company have been paid and discharged or adequate provision has been made therefor.
- 4. All the remaining property and assets of the limited liability company, if any, have been distributed among its members in accordance with their respective rights and interests.
- 5. There are no suits pending against the limited liability company in any court, or adequate provision has been made for the satisfaction of any judgment, order, or decree which may be entered against the limited liability company in any pending suit.
- 6. The limited liability company's business has been wound up.
- 7. The legal existence of the limited liability company is terminated effective on the date and time of filing these Articles of Termination or on a later date and time, not more than 30 days after the filing, if so stated. The effective date cannot be before the date of filing these Articles of Termination. Termination is effective (check one):

on the date and time of filing these Articles of Termination; OR
 on _____, at _____ .m., Hawaiian Standard Time,
(Month Day Year)

which is not more than 30 days after these Articles of Termination is filed.

We certify, under the penalties set forth in the Hawaii Uniform Limited Liability Company Act, that we have read the above statements, we are authorized to make this change, and that the statements are true and correct.

Signed this 28th day of June 2017

Kamana'opono M. Crabbe, Ph.D. Manager

(Type/Print Name & Title)

(Type/Print Name & Title)

(Signature)

6/28/17
(Signature)

SEE INSTRUCTIONS ON REVERSE SIDE. Articles must be signed and certified by at least one manager of a manager-managed company or by at least one member of a member-managed company.

[Home - BREG](#)

[BREG Online Services](#)

[Annual Business Filing](#)

[Search for a Business Entity](#)

[Purchase Documents Online](#)

[Purchase Certificate of Good Standing](#)

[Authenticate a Certificate of Good Standing](#)

[Register a Business](#)

[MyBusiness Notifications](#)

[My Trade Name/TM/SM Notifications new](#)

[Entity List Builder](#)

[Contact BREG](#)

[Technical Support](#)

[Feedback](#)

[Create an Account](#)

HO'OPĀKEU LLC

DOMESTIC LIMITED LIABILITY COMPANY (LLC)

[GENERAL INFO](#)

[ANNUAL FILINGS](#)

[MEMBER/MGR](#)

[OTHER FILINGS](#)

[BUY AVAILABLE DOCS](#)

Other Filings

DATE ▼	DESCRIPTION ▼	REMARKS
Jun 29, 2017	Articles of Termination	ARTICLES OF TERMINATION
Aug 3, 2016	Address Change	Address Change
Nov 5, 2015	Name Change	FROM: HO'PAKEU LLC
Oct 30, 2015	Articles of Organization	Articles of Organization

Note: Transactions may be available for purchase. Please see the Buy Available Docs tab for additional information.



[Subscription Services](#)

[Terms of Use](#)

[Privacy Policy](#)

[ADA Compliance](#)

[State Portal](#)

[Comments](#)

[Contact Us](#)

Copyright © 2018 Hawaii Information Consortium, LLC. All rights reserved.

View in: [Mobile](#) | [Classic](#)

DCCA State of Hawaii

Downloaded on April 12, 2018.

The information provided below is not a certification of good standing and does not constitute any other certification by the State.

Website URL: <http://hbe.ehawaii.gov/documents>

Business Information

MASTER NAME	HO'OPĀKEU LLC
BUSINESS TYPE	Domestic Limited Liability Company (LLC)
FILE NUMBER	137401 C5
STATUS	Terminated
PLACE INCORPORATED	Hawaii UNITED STATES
REGISTRATION DATE	Oct 30, 2015
MAILING ADDRESS	711 KAPI'OLANI BLVD STE 111 HONOLULU, Hawaii 96813 UNITED STATES
PARTNER TERMS	AT-WILL
MANAGED BY	MANAGER(S)
AGENT NAME	MONA BERNARDINO
AGENT ADDRESS	711 KAPI'OLANI BLVD STE 1430 HONOLULU, Hawaii 96813 UNITED STATES

Annual Filings

FILING YEAR	DATE RECEIVED	STATUS
2016		Delinquent

Officers

NAME	OFFICE	DATE
CRABBE,KAMANA'OPONO M	MGR	Oct 30, 2015
VICTOR,LISA	MGR	Oct 30, 2015
IONA,HAWLEY	MGR	Oct 30, 2015

SCHEDULE L
(Form 990 or 990-EZ)

Transactions With Interested Persons

OMB No. 1545-0047

2015

Open To Public Inspection

Department of the Treasury
Internal Revenue Service

▶ Complete if the organization answered "Yes" on Form 990, Part IV, line 25a, 25b, 26, 27, 28a, 28b, or 28c, or Form 990-EZ, Part V, line 38a or 40b.
▶ Attach to Form 990 or Form 990-EZ.
▶ Information about Schedule L (Form 990 or 990-EZ) and its instructions is at www.irs.gov/form990.

Name of the organization **Hi'ilei Aloha LLC** Employer identification number **26-1210564**

Part I Excess Benefit Transactions (section 501(c)(3), section 501(c)(4), and 501(c)(29) organizations only).

Complete if the organization answered "Yes" on Form 990, Part IV, line 25a or 25b, or Form 990-EZ, Part V, line 40b.

1 (a) Name of disqualified person	(b) Relationship between disqualified person and organization	(c) Description of transaction	(d) Corrected?	
			Yes	No

2 Enter the amount of tax incurred by the organization managers or disqualified persons during the year under section 4958 \$ _____

3 Enter the amount of tax, if any, on line 2, above, reimbursed by the organization \$ _____

Part II Loans to and/or From Interested Persons.

Complete if the organization answered "Yes" on Form 990-EZ, Part V, line 38a or Form 990, Part IV, line 26; or if the organization reported an amount on Form 990, Part X, line 5, 6, or 22.

(a) Name of interested person	(b) Relationship with organization	(c) Purpose of loan	(d) Loan to or from the organization?		(e) Original principal amount	(f) Balance due	(g) In default?		(h) Approved by board or committee?		(i) Written agreement?	
			To	From			Yes	No	Yes	No	Yes	No
Total												

Total \$ _____

Part III Grants or Assistance Benefiting Interested Persons.

Complete if the organization answered "Yes" on Form 990, Part IV, line 27.

(a) Name of interested person	(b) Relationship between interested person and the organization	(c) Amount of assistance	(d) Type of assistance	(e) Purpose of assistance
Ho'okele Pono LLC	The organization	0.		
Ho'okipaipai LLC	The grantee is a	33,720.	Operating gra	To support op
Ho'opakeu LLC	The grantee is a	26.	Operating gra	To support op

LHA For Paperwork Reduction Act Notice, see the Instructions for Form 990 or 990-EZ.

Schedule L (Form 990 or 990-EZ) 2015

See Part V for Continuations

Part IV Business Transactions Involving Interested Persons.

Complete if the organization answered "Yes" on Form 990, Part IV, line 28a, 28b, or 28c.

(a) Name of interested person	(b) Relationship between interested person and the organization	(c) Amount of transaction	(d) Description of transaction	(e) Sharing of organization's revenues?	
				Yes	No

Part V Supplemental Information

Provide additional information for responses to questions on Schedule L (see instructions).

Sch L, Part III, Grants or Assistance Benefitting Interested Persons:

(a) Name of Person: **Ho'okele Pono LLC**

(b) Relationship Between Interested Person and Organization:

The organization and the grantee share a common member (OHA).

(a) Name of Person: **Ho'okipaipai LLC**

(b) Relationship Between Interested Person and Organization:

The grantee is a sub-entity of Ho'okele Pono LLC.

(c) Amount of Grant \$ **33,720.**

(d) Type of Assistance: **Operating grant**

(e) Purpose of Assistance: **To support operations.**

(a) Name of Person: **Ho'opakeu LLC**

(b) Relationship Between Interested Person and Organization:

The grantee is a sub-entity of Ho'okele Pono LLC.

(c) Amount of Grant \$ **26.**

(d) Type of Assistance: **Operating grant**

(e) Purpose of Assistance: **To support operations.**

LLC Non-Profit Structure

Office of Hawaiian Affairs

Hi'ilei Aloha LLC



Ho'okele Pono LLC



Hi'ipaka LLC
dba Waimea Valley



WAIMEA VALLEY

Hi'ipoi LLC
dba Makaweli Poi Mill



MAKAWELI POI

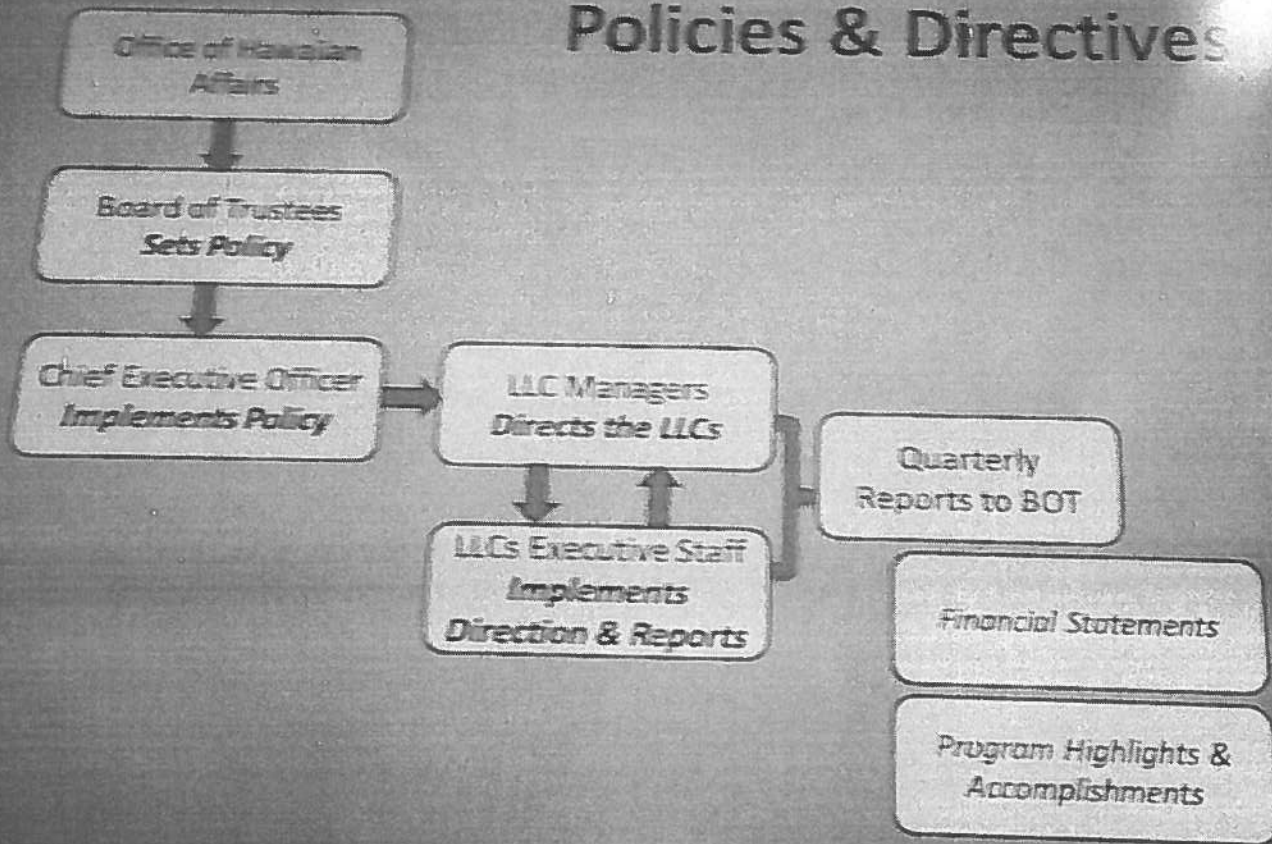
Hi'ikualono LLC



Ho'okipaipai LLC

HI OPTAC

Policies & Directives



Hi'ipoi LLC OHA Funding Support

OHA provided \$970,489 in total funding support since 2007

OHA FY	Action Item #	Purchase	Consultant (A'ana)	Operating Costs	Purpose	Total Approved
					Purchase	\$210,000
FY 2007	BOT 07-05	\$185,000	\$25,000			\$65,000
FY 2008	BOT 08-01			\$65,000		\$65,000
	Hi'ilei In-Kind			\$6,279		\$6,279
FY 2009	OHA Grant (ECO)			\$25,000		\$25,000
	Hi'ilei In-Kind			\$16,069		\$16,069
FY 2010	OHA Grant (ADM)			\$25,000		\$25,000
	OHA Grant (ADM)			\$25,000		\$25,000
	Hi'ilei In-Kind			\$17,214		\$17,214
	Hi'ilei Loan			\$12,450		\$12,450
	OHA Grant			\$50,000		\$50,000
FY 2011	BOT 08-01			\$25,000		\$25,000
FY 2012	ARM 11-04			\$150,000	Expand market;	\$150,000
FY 2013	ARM 11-04			\$150,000	create new products	\$150,000
	Hi'ilei Grant			\$1,000		\$1,000
	ARM 12-06			\$50,000		\$50,000
	Hi'ilei Loan			\$20,000		\$20,000
FY 2014	Hi'ilei In-Kind			\$11,977		\$11,977
FY 2016	Hi'ilei Grant			\$60,000		\$60,000
	Hi'ilei Grant			\$25,000		\$25,000
	OHA Grant			\$13,500		\$13,500
FY 2017	Hi'ilei Vehicle			\$12,000		\$20,000
Total Approved:		\$185,000	\$25,000	\$760,489		\$970,489

SCHEDULE I (Form 990)

Department of the Treasury
Internal Revenue Service

Grants and Other Assistance to Organizations, Governments, and Individuals in the United States
Complete if the organization answered "Yes" on Form 990, Part IV, line 21 or 22.
▶ Attach to Form 990.

▶ Information about Schedule I (Form 990) and its instructions is at www.irs.gov/form990.

Name of the organization
Hi 'ilei Aloha LLC
Employer identification number
26-1210564

Part I General Information on Grants and Assistance

1 Does the organization maintain records to substantiate the amount of the grants or assistance, the grantees' eligibility for the grants or assistance, and the selection criteria used to award the grants or assistance? Yes No

2 Describe in Part IV the organization's procedures for monitoring the use of grant funds in the United States.

Part II Grants and Other Assistance to Domestic Organizations and Domestic Governments. Complete if the organization answered "Yes" on Form 990, Part IV, line 21, for any recipient that received more than \$5,000. Part II can be duplicated if additional space is needed.

1 (a) Name and address of organization or government	(b) EIN	(c) IRC section if applicable	(d) Amount of cash grant	(e) Amount of non-cash assistance	(f) Method of valuation (book, FMV, appraisal, other)	(g) Description of non-cash assistance	(h) Purpose of grant or assistance
Ho'okipaipai LLC 711 Kapiolani Blvd, Ste 111 Honolulu, HI 96813	01-0964759	501(c)(3)	33,720.	0.			To support the operations of the grantee.
Supporting the Language of Kauai Inc - PO Box 245 - Lihue, HI 96766	20-4088998	501(c)(3)	85,000.	0.			To support the operations of the Makaweli Poi Mill.
Lehua Poi Company PO Box 1017 Waimea, HI 96796			23,000.	0.			To support the operations of the Makaweli Poi Mill.

2 Enter total number of section 501(c)(3) and government organizations listed in the line 1 table **2.**

3 Enter total number of other organizations listed in the line 1 table **1.**

Part III Statement of Program Service Accomplishments

Check if Schedule O contains a response or note to any line in this Part III

1 Briefly describe the organization's mission TO SEEK SUPPORT FROM THE COMMUNITY TO HELP PERPETUATE THE HAWAIIAN LANGUAGE THROUGH THE MEDIUM OF K-12 EDUCATION

2 Did the organization undertake any significant program services during the year which were not listed on the prior Form 990 or 990-EZ? Yes No

If "Yes," describe these new services on Schedule O If "Yes," describe these changes on Schedule O

3 Did the organization cease conducting, or make significant changes in how it conducts, any program services? Yes No

4 Describe the organization's program service accomplishments for each of its three largest program services, as measured by expenses Section 501(c)(3) and 501(c)(4) organizations are required to report the amount of grants and allocations to others, the total expenses, and revenue, if any, for each program service reported

4a (Code) (Expenses \$ 465,314 including grants of \$ 230,825) (Revenue \$) PASS-THROUGH FUNDING, BUILDING DEPRECIATION AND OTHER PROGRAM EXPENSES TO SUPPORT KAWAIKINI NEW CENTURY PUBLIC CHARTER SCHOOL

4b (Code) (Expenses \$ 96,172 including grants of \$ 96,172) (Revenue \$) PASS-THROUGH FUNDING TO ASSIST WITH THE TRANSITION OF LEHUA POI COMPANY TO ALOHA AINA POI COMPANY LLC

4c (Code) (Expenses \$) (Revenue \$) including grants of \$

4d Other program services (Describe in Schedule O) (Expenses \$) (Revenue \$) including grants of \$

4e Total program service expenses 561,486

Part VII Investments—Other Securities. Complete if the organization answered 'Yes' on Form 990, Part IV, line 11b. See Form 990, Part X, line 12.

(a) Description of security or category (including name of security)	(b) Book value	(c) Method of valuation Cost or end-of-year market value
(1) Financial derivatives		
(2) Closely-held equity interests		
(3) Other		
Total. (Column (b) must equal Form 990, Part X, col (B) line 12.)		

Part VIII Investments—Program Related. Complete if the organization answered 'Yes' on Form 990, Part IV, line 11c. See Form 990, Part X, line 13.

(a) Description of investment	(b) Book value	(c) Method of valuation Cost or end-of-year market value
Total. (Column (b) must equal Form 990, Part X, col (B) line 13.)		

Part IX Other Assets. Complete if the organization answered 'Yes' on Form 990, Part IV, line 11d. See Form 990, Part X, line 15

(a) Description	(b) Book value
Total. (Column (b) must equal Form 990, Part X, col (B) line 15.)	

Part X Other Liabilities. Complete if the organization answered 'Yes' on Form 990, Part IV, line 11e or 11f. See Form 990, Part X, line 25.

1. (a) Description of liability	(b) Book value
Federal income taxes	
DUE TO KAWAIKINI CHARTER SCHOOL	87,205
PASS THROUGH AHA KAUAI COALITION	9,884
Total. (Column (b) must equal Form 990, Part X, col (B) line 25.)	97,089

2. Liability for uncertain tax positions. In Part XIII, provide the text of the footnote to the organization's financial statements that reports the organization's liability for uncertain tax positions under FIN 48 (ASC 740). Check here if the text of the footnote has been provided in Part XIII

Additional Data

Software ID:

Software Version:

EIN: 20-4088998

Name: SUPPORTING THE LANGUAGE OF KAUA'I
INC

Form 990, Schedule I, Part II, Grants and Other Assistance to Domestic Organizations and Domestic Governments.

(a) Name and address of organization or government	(b) EIN	(c) IRC section if applicable	(d) Amount of cash grant	(e) Amount of non-cash assistance	(f) Method of valuation (book, FMV, appraisal, other)	(g) Description of non-cash assistance	(h) Purpose of grant or assistance
KAWAIKINI CHARTER SCHOOL KAWAIKINI CHARTER SCHOOL PO BOX 662014 PO BOX 662014 LIHUE, HI 96766	26-2255893	GOV	230,825				PASS THRU FUNDING
LEHUA POI COMPANY LEHUA POI COMPANY C/O PO BOX 245 C/O PO BOX 245 LIHUE, HI 96766			60,000	11,172	BOOK VALUE	VEHICLE	COVER EXISTING DEBTS
ALOHA AINA POI COMPANY LLC ALOHA AINA POI COMPANY LLC 9819B UUKU ROAD 9819B UUKU ROAD WAIKOA, HI 96796			25,000				COVER START UP COSTS