

BOARD OF TRUSTEES

Carmen. Hulu Lindsey, Chairperson

Leina‘ala Ahu Isa, Vice Chairperson

Dan Ahuna, Trustee Kaua‘i & Ni‘ihau

Kalei Akaka, Trustee O‘ahu

Keli‘i Akina, Trustee At-Large

Luana Alapa, Trustee Moloka‘i & Lāna‘i

Brendon Kalei‘āina Lee, Trustee At-Large

Keola Lindsey, Trustee Hawai‘i Island

John Waihe‘e IV, Trustee At-Large



**STATE OF HAWAII'
OFFICE OF HAWAIIAN AFFAIRS**

MEETING OF THE BOARD OF TRUSTEES

DATE: Thursday, January 14, 2021

TIME: 10:00 am

PLACE: Virtual Meeting

Viewable at www.oha.org/livestream OR

Listen by phone: (213) 338-8477,

Webinar ID: 943 5024 4228

Due to the threat of COVID-19, Governor Ige issued the most recent Emergency Seventeenth Supplementary Proclamation dated December 16, 2020 that suspends parts of Hawai‘i Revised Statutes Chapter 92, Public Agency Meetings and Records to, among other things, enable boards to conduct business without any board members or members of the public physically present at the same location.

The OHA Board of Trustees will hold virtual meetings until further notice. The virtual meetings can be viewed and observed via livestream on OHA’s website at www.oha.org/livestream or listen by phone: (213) 338-8477, Webinar ID: 943 5024 4228

AGENDA

- I. Call to Order
- II. Public Testimony on Items Listed on the Agenda* (Please see pages 2 & 3 on how to submit written testimony or provide oral testimony online. Oral testimony by phone will **not** be accepted)
- III. Approval of Minutes
 - A. October 27, 2020
 - B. October 29, 2020
 - C. December 10, 2020
- IV. New Business
 - A. Strategic Plan Implementation Update
 - B. Ad Hoc Committees
 1. Grants and Sponsorships – Committee Membership Update
 2. Maunakea – Committee Membership Update
- V. Community Concerns and Celebrations*(Please see pages 2 & 3 on how to submit written testimony or provide oral testimony online. Oral testimony by phone will **not** be accepted)

BOARD OF TRUSTEES

Carmen. Hulu Lindsey, Chairperson

Leina‘ala Ahu Isa, Vice Chairperson

Dan Ahuna, Trustee Kaua‘i & Ni‘ihau

Kalei Akaka, Trustee O‘ahu

Keli‘i Akina, Trustee At-Large

Luana Alapa, Trustee Moloka‘i & Lāna‘i

Brendon Kalei‘āina Lee, Trustee At-Large

Keola Lindsey, Trustee Hawai‘i Island

John Waihe‘e IV, Trustee At-Large



**STATE OF HAWAII'
OFFICE OF HAWAIIAN AFFAIRS**

VI. Executive Session‡

- A. Consultation with OHA's Procurement Unit, Board Counsel Robert G. Klein and Kurt W. Klein regarding the evaluation process for qualifying offers in Request for Proposals (RFP) No. BOT 2020-30 for Performance Appraisal Consulting Services, and questions and issues pertaining to the Board's powers, duties, privileges, immunities, and liabilities with respect to the evaluation process. Pursuant to HRS §92-5 (a)(4), (8); HRS §103D-105, -202, -303; and HAR 3-122-45.01(2)(C)(ii).
- B. Consultation with Board Counsel Robert G. Klein and Kurt W. Klein re: questions and issues pertaining to the Board's powers, duties, privileges, immunities, and liabilities with respect to *The Office of Hawaiian Affairs v. Leslie H. Kondo, et al.*; Civil No. 1CCV-20-0000259 (JPC). Pursuant to HRS § 92-5(a)(4).
- C. Consultation with Board Counsel Robert G. Klein and Kurt W. Klein re: questions and issues pertaining to the Board's powers, duties, privileges, immunities, and liabilities with respect to *The Office of Hawaiian Affairs v. State of Hawai‘i, et al.*; Civil No. 17-1-1823-11 (JPC). Pursuant to HRS § 92-5(a)(4).

VII. Announcements

VIII. Adjournment

If you require an auxiliary aid or accommodation due to a disability, please contact Raina Gushiken at telephone number 594-1772 or by email rainag@oha.org no later than three (3) business days prior to the date of the meeting.

Meeting Materials will be available to the public on Monday, January 11, 2021 and posted to OHA’s website at: www.oha.org/bot

*Testimony during Public Testimony:

Public Testimony allows the public to provide testimony on matters only listed on the meeting agenda. It is a requirement of Hawai‘i Revised Statutes (HRS), Chapter 92, Public Agency Meetings and Records. The Board members are not required to respond to matters not listed on the meeting agenda.

Testimony for Public Testimony can be submitted to the OHA Board of Trustees either: (1) in writing emailed at least 24 hours prior to the scheduled meeting, or (2) as live, oral testimony online during the Public Testimony portion of the virtual meeting.

Please visit OHA’s website for more detailed information on how to submit testimony at: <https://www.oha.org/how-to-submit-testimony-for-oha-bot-meetings/>

Persons wishing to provide written testimony should submit testimony via email to BOTmeetings@oha.org at least 24 hours prior to the scheduled meeting. Any testimony received after this deadline will be late testimony and distributed to the Board members after the scheduled meeting. Due to COVID-19, please do not fax, mail, or hand-deliver written testimony.

BOARD OF TRUSTEES

Carmen. Hulu Lindsey, Chairperson

Leina‘ala Ahu Isa, Vice Chairperson

Dan Ahuna, Trustee Kaua‘i & Ni‘ihau

Kalei Akaka, Trustee O‘ahu

Keli‘i Akina, Trustee At-Large

Luana Alapa, Trustee Moloka‘i & Lāna‘i

Brendon Kalei‘āina Lee, Trustee At-Large

Keola Lindsey, Trustee Hawai‘i Island

John Waihe‘e IV, Trustee At-Large



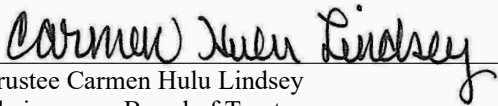
STATE OF HAWAII
OFFICE OF HAWAIIAN AFFAIRS

Persons wishing to provide oral testimony online during the virtual meeting must register here first:

https://zoom.us/webinar/register/WN_0qBr0PLORnaHYK4bpbUxCg

The registration to provide oral testimony online will remain open until the Public Testimony section on the agenda has concluded. You will need to register prior to this time if you would like to orally testify. Once you have completed your registration; a confirmation email will be sent to you with a link to join the virtual meeting and further instructions on how to provide oral testimony during the virtual meeting. To provide oral testimony online, you will need (1) a computer or mobile device to connect to the internet, (2) internet access, and (3) a microphone to provide oral testimony. Oral testimony online will be limited to five (5) minutes. Oral testimony by phone will not be accepted at this time.

‡ Notice: This portion of the meeting will be closed pursuant to HRS § 92-5.


Trustee Carmen Hulu Lindsey
Chairperson, Board of Trustees

1/7/2021
Date

Office of Hawaiian Affairs
Board of Trustees Meeting
January 14, 2021

III. Approval of Minutes

A. October 27, 2020

B. October 29, 2020

C. December 10, 2020

**STATE OF HAWAII
OFFICE OF HAWAIIAN AFFAIRS
Virtual Meeting via Zoom Webinar**

Due to the threat of COVID-19, Governor Ige issued the most recent Emergency Fourteen Supplementary Proclamation dated October 13, 2020 that suspends parts of Hawai'i Revised Statutes Chapter 92, Public Agency Meetings and Records to, among other things, enable boards to conduct business without any board members or members of the public physically present at the same location.

The OHA Board of Trustees will hold virtual meetings until further notice. The virtual meetings can be viewed and observed via livestream on OHA's website at www.oha.org/livestream or listen by phone: (213) 338-8477, Webinar ID: 912-8879-0613

**Minutes of the Office of Hawaiian Affairs Board of Trustees &
Hawai'i Island Community Meeting
Tuesday, October 27, 2020
5:30 pm**

ATTENDANCE:

TRUSTEE COLETTE MACHADO
TRUSTEE BRENDON KALEI'ĀINA LEE
TRUSTEE LEINA'ALA AHU ISA
TRUSTEE DAN AHUNA
TRUSTEE KALEI AKAKA
TRUSTEE W. KELI'Ī AKINA
TRUSTEE CARMEN HULU LINDSEY
TRUSTEE ROBERT K. LINDSEY
TRUSTEE JOHN WAIHE'E IV

ROBERT KLEIN, BOARD COUNSEL

ADMINISTRATION STAFF:

SYLVIA HUSSEY, CEO
RAINA GUSHIKEN, CC
EVERETT OHTA, CC
MEHANA HIND, CE
KEVIN CHAK, IT
MARC BANTOLINA, IT

BOT STAFF:

CAROL HO'OMANAWANUI
LOPAKA BAPTISTE
LAURENE KALUAU-KEALOHA
DAYNA PA
KAMA HOPKINS
KAUIKEAOLANI WAILEHUA

GUESTS:

KULIA POTTER
JANICE IKEDA
PUA LINCOLN MAIELUA
KIRSTIN KAHALOA
W. MAPUANA WAIPA
SUSIE OSBOURNE
KATIE BENIONI
KAIMI KAUPIKO
KAMA HOPKINS
DAWN REGO-YEE

I. CALL TO ORDER

Chair Colette Machado Calls the Board of Trustees and Hawai'i Island Community meeting to order at 5:30 pm. Roll call is taken to identify the Trustees that are participating; Trustees Ahu Isa, Ahuna, Akaka, Akina, Lee, Trustee Robert Lindsey, and Machado constituting a quorum of seven Trustees. Trustee Carmen Hulu Lindsey and Trustee John Waihe'e IV are expected to join shortly.

Thank you, Madam Secretary. I have some announcements to go on the record. Welcome to the OHA Board of Trustees and Hawai'i Island Community meeting. As a reminder, please mute your mic until you need to speak to eliminate any background noise, which makes it difficult to hear and affects the quality of sound on the live stream. Trustees and the OHA CEO who are joining by video conference, please enable your camera if you are able to do so. All other OHA staff please enable your camera when you need to address the board. When you would like to speak unmute your mic and address the Chair to be recognized. When the Chair recognizes you

proceed to speak. Please mute your mic when you are done. At the prompting of the Chair the Board Secretary will do a roll call to determine quorum. If you are disconnected we will pause the meeting for one minute and wait for you to log back on. After one minute we will proceed with the meeting provided we have a quorum. If you need to leave the meeting, please inform the Chair by announcing you are leaving the meeting.

We are recording today's meeting for the sole purpose of producing written meeting minutes, which will become the official record of this meeting. Joining the Trustees today is Robert G. Klein, Board Counsel, CEO Sylvia Hussey, along with Carol, Dayna, Lōpaka, Laurene, Kevin, Marc, Kama and Kauai as support staff. I will call on Ka Pouhana Sylvia to announce the names of the administrative staff also joining us today.

5:32 pm Trustee John Waihe'e IV joins the meeting.

Sylvia Hussey, CEO - Thank you Chair. We have Senior Legal Counsel Raina Gushiken, Assistant Legal Counsel Everett Ohta, Community Engagement Director Mehana Hind and we also want to acknowledge our Community Outreach Center Staff on Hawai'i Island Shane Palacat-Nelson, Cecilia Conol, Dawn Tanimoto as well as Kamaile Puluole-Mitchell. Thank you Chair.

II. INTRODUCTIONS

Chair Colette Machado - Thank you Sylvia. We are now on roman numeral 2 will begin with introductions of Trustees and their staff. We will begin with the Vice Chair Brendon Kalei'aina Lee.

Trustee Brendon Kalei'aina Lee - Aloha Chair, mahalo. Aloha Hawai'i Island, Moku o Keawe. As with all of our other meetings, we are very sad that we cannot be there with you this evening in person. Especially since it's Uncle Bob's last meeting on his home island. Joining me this evening is my staff Trustee Aides LeiAnn Durant and Alyssa Kau. Mahalo Chair.

Chair Colette Machado - Thank you Trustee Brendon Kalei'aina Lee. I'd like to have Trustee Leina'ala Ahu Isa introduced herself, Trustee at Large and her staff please.

Trustee Leina'ala Ahu Isa - Aloha mai kākou not only beneficiaries everybody listening in tonight to our virtual meeting and of course, like Vice Chair Lee said, it's your Trustee Lindsey's second to the last meeting. I am very, very sad we can't be there because that's another favorite island. Big Island always can feel the spirit there like I know when I go to Hilo. If I'm walking around I get off the plane. I could just feel it and I remember going to Waiakea Villas and just watching the trees move and the flowers and the bushes and there that there was no wind. So, I know there are spirits all around us especially on the Big Island it's a baby island it's still growing. My Trustee Aide Nathan is here, faithful Nathan. He comes all the way in from Pearl City to join us, but we're grateful we're here and we have this opportunity to listen to you, to your concerns. And that we're always here for you when you need anything. Mahalo, mahalo Chair.

Chair Colette Machado - Thank you, Trustee Leina'ala Ahu Isa. The next Trustee is Dan Ahuna from Kaua'i and Ni'ihau. Trustee Dan Ahuna please.

Trustee Dan Ahuna - Aloha Chair Machado and aloha to our Trustee on the Big Island, uncle Bob Lindsey. I want to thank you for serving us all this time and thank you for a wonderful time serving as the Vice Chair of the RM Committee. I also like to say aloha to the beneficiaries Moku o Keawe and the people who are streaming with us tonight. Also would like to thank your two staffers. They mean so much to us, Kama and Kauai. With me tonight I have my two Trustee Aide Anuheia Diamond and Claudine Calpito.

Chair Colette Machado - Thank you Trustee Dan Ahuna. Our next Trustee up is Trustee Keli'i Akina, At Large. Trustee Akina please introduce yourself and your staff.

Trustee Keli'i Akina - Hello Madam Chair, appreciate the introduction and your leadership of this meeting. I want to say aloha mai kākou to all of you on Moku o Keawe. It is such an important part of our beneficiary population and we hope to serve you well. I have with me this evening, watching from online two Trustee Aides, Maria Calderon and Paul Harleman. I want to say that I am honored to work with my fellow Trustees to serve the needs of the Big Island. I hope that this evening we learn much from you. Your mana'o is very important to us, and I want to say mahalo to all of you who will present and all of you who will share with us this evening. We look forward to learning. Much aloha, I am Trustee Keli'i Akina, Trustee at Large. And I wish you the very best, aloha.

Chair Colette Machado - Thank you Trustee Keli'i Akina.

Trustee Keli'i Akina – Madam Chair.

Chair Colette Machado - Yes.

Trustee Keli'i Akina - Please forgive me. I do want to say this. It is an honor to be here with Bob Lindsey, who has served in a distinguished way, the people of Hawai'i for many decades. Thank you Trustee Bob.

Chair Colette Machado - Thank you, Trustee Keli'i Akina. Is Trustee Carmen Hulu Lindsey present?

Dayna Pa – She is joining now.

Chair Colette Machado - Well, let me move on and I can come back to her. I'll call on Trustee John Waihe'e IV, At Large. Trustee Waihe'e please introduce yourself and your staff.

5:38 pm Trustee Carmen Hulu Lindsey joins the meeting.

Trustee John Waihe'e IV - Thank you, Madam Chair and thank you as always, your chairing of this meeting has been outstanding. Hello everybody, I am a Trustee John Waihe'e IV, Trustee at Large. I want to thank our host, our Trustee our Uncle Bob Lindsey for hosting us tonight. Thank you also for being a gentleman and a mentor and a good friend to all of us all these years. Joining me tonight are my staff Crayn Akina and Melissa Wennihan. I too really regret not being able to be on Hawai'i Island. You know, in person that's always a good trip for us. Thank you to all the beneficiaries who have joined us virtually and I look forward to hearing your manao. And as always, you know we really care about what you have to say. So again, mahalo everyone.

Chair Colette Machado - Thank you Trustee John Waihe'e IV. I'll go back to Maui and I'll call and Trustee Carmen Hulu Lindsey to introduce herself and her and if she has her staff present. Trustee Carmen Hulu Lindsey, please.

Trustee Carmen Hulu Lindsey - Mahalo Chair thank you so much. E kala mai for my lateness here. I'd like to introduce my staff who is Lehua Itokazu and Kanani Iaea. And I want to mahalo my cousin Bob Lindsey for hosting this meeting and also let the people of Waimea know that I am a keiki o ka 'āina o Waimea and miss living there, actually. Reminding them too that our offices are always open anytime they need us. We are free to help our people of the Hawai'i Island. Thank you.

Chair Colette Machado - Thank you Trustee Carmen Hulu Lindsey. I'll call now on Moku o Keawe Trustee Robert K. Lindsey, Jr. To introduced himself and his super staff Kama Hopkins and Kauai Wailehua.

Trustee Robert Lindsey – Mahalo Chair Machado. I'd like to say aloha and welcome to all of you who are joining us this evening for our virtual meeting here on Moku o Keawe. It has been my honor and privilege to serve our beautiful island for the past 13 years and seven months. And joining me this evening are my super staff, my faithful and loyal staff, Kama Hopkins and Kauai Wailehua.

Chair Colette Machado - Thank you, Trustee Robert Lindsey. I'm Trustee, Colette Machado. I'm the Chair of the Board of Trustees. I represent the island of Molokai and Lanai. With me present is my Chief of Staff Carol Ho'omanawanui, the Board Secretary, which is Dayna Naeole Pa, my two Aides are Lopaka Baptiste and Laurene Kaluau-Kealoha. My staff is always ready to help anybody that needs to kokua. But for me Bobby, I'm going to miss you tremendously at the table. I was just telling my staff I hope I don't cry. You have been an asset to the Office of Hawaiian Affairs. Your way of serving your beneficiaries on Moku o Keawe, your gentle style the way you speak to one another and your respect for all of us will be remembered forever. But thank you for your years of service Bobby, e kala mai my heart is so heavy tonight. This will be our last meeting with you for your island but thank you for everything in the past. You enjoy your retirement with your family, which is well overdue. Thank you so much. With that said members, we will now move...

Carol Hoomanawanui – Madam Chair, sorry to interrupt, this is Carol. We have Trustee Akaka that needs to introduce herself and her staff.

Chair Colette Machado – Trustee Akaka I am so sorry. Please forgive me Trustee Akaka.

Trustee Kalei Akaka - Mahalo Chair and Carol. Mahalo all who are tuning in with us on Hawai'i Island, and the residents of the Hawai'i and the world. A special mahalo to Uncle Bob for all your many years of service. It has been such an honor to work with you and to serve with you on the Board here at the Office of Hawaiian Affairs. We look forward to continuing to work with you as time goes on. I would also like to introduce staff joining us this evening Brandon Mitsuda and also Mark Watanabe. I would like to thank our Chair for conducting this meeting as well and along with all our various Board members joining us this evening and our staff our CEO, our Board Counsel and all of those that will be sharing their mana'o with us this evening. Thank you so much, mahalo.

III. PUBLIC TESTIMONY ON ITEMS LISTED ON THE AGENDA

Chair Colette Machado – Thank you, Trustee Akaka. With that said members will now move to Roman numeral 3 which is public testimonies and I have a few comments to make for those that are standing by to offer public testimony that's listed on the agenda.

Public testimony should be limited to matters listed on the meeting agenda and will occur during the public testimony portion on the agenda. Once the public testimony section on the agenda has been concluded all testimony online will no longer be accepted. Your name will be called and your microphone will be unmuted when it is your turn to speak. If you are not audible you will be muted and the next testifier will be called. Your name will be called again before the conclusion of the public testimony section. State your name, organization if applicable, agenda item you are testifying on and your position, support or oppose or comment on each of the agenda items. If you begin to address other issues not on today's agenda. The Chair will call you out of order and direct you to limit your testimony to items listed on the agenda.

Oral testimony on line will be limited to 5 minutes. A timer will be on the screen to count down the time, a chime will sound when you have 30 seconds left in a second chime when your testimony expires. Your mic will be automatically muted once you have completed your oral testimony or if you're allotted time for testimony has expired. I will call on the staff to call on the listed testifier.

The first to speak under public testimony is W. Mapuana Waipa, Ke Ana La'ahana Public Charter School. Is W. Mapuana Waipa present?

W. Mapuana Waipa – Yes I am.

Chair Colette Machado - You have testimony to offer on behalf of the resolution honoring Robert Lindsey.

W. Mapuana Waipa - Yes, Madam Chair.

Chair Colette Machado - So when you're ready, please begin.

W. Mapuana Waipa – Aloha mai kākou e na ke papa OHA. I just want to say on behalf, I am Mapuana Waipa Po'okula for Ke Ana La'ahana Public Charter school and also the Vice President of the Keaukaha Community Association. I want to mahalo Trustee Lindsey for being the champion in funding for Hawaiian focused charter schools. Your efforts, his efforts, as well as all of you Trustees help to support 96% of our students who are identified as Native Hawaiians here in Keaukaha. 72% of them live or have ties to our community of Keaukaha Hawaiian homestead. And 71% of my kumu and staff are Native Hawaiian. Your efforts Trustee Lindsey provide for school to include cultural practitioners as kumu for our haumana to learn from. This is our way of continuing the ike of our kupuna, continuing the mo'olelo of our kupuna and 'ohana. You have allowed us this chance to bring value into authentic teaching. We are humbled by a hard work and dedication to schools and communities such as ours. He kanaka po'okela nō 'oe i ka holomua ana o nā 'ōiwi Hawai'i. Mau no kou aloha nō ka po'e a pau. He a alii no 'oe. Mahalo nui e Trustee Lindsey, to all of you for the support that you provide for our Charter Schools. Mahalo nui. Aloha.

Chair Colette Machado – Thank you Mapuana so much for your beautiful testimony in support of the resolution honoring Robert Lindsey. The next speaker for public testimony is Susie Osborne. Are you present Susie?

Susie Obourne – Aloha mai kākou. Thank you for this opportunity to speak tonight and acknowledgement of anakala Bob Lindsey. I am Susie Osborne, Kua O Ka Lā Public Charter School. I wanted to come tonight to acknowledge and thank anakala Bob for your years of service as a Trustee for the Office of Hawaiian Affairs. Thank you for your unwavering commitment to our Hawaiian Focus Charter schools over the many years. This support has been physically and emotionally crucial for our survival and is given us hope through our many challenging moments. Thank you for your commitment to uplifting your Hawai'i Island community. Your wisdom is ever present in all of your deliberations, guiding us with Aloha and grace, your sense of calm, permeates, and sets the tone for all, your leadership prevails. Bob our paths crossed over 25 years ago with Ho'oulu Lāhui at Pualaa. Then throughout the past 20 years with Kua o Ka Lā, my heart feels a profound sense of loss at this moment, but I recognize and celebrate this joyful transitional moment for you. It is with heartfelt aloha that I wish you a hui hou and aloha nui. I want to also extend our heartfelt gratitude on behalf of all our Hawaiian focused charter schools to all the Trustees of the Office of Hawaiian Affairs for your service to your communities, and to our kula. Wanting to make a change in our community, so Mahalo Nui.

Chair Colette Machado - Thank you so much Susie in support of honoring our Trustee Robert Lindsey. Your Moku o Keawe Trustee. Our next speaker is Katie Benioni. She'll be testifying in support of the resolution honoring Trustee Robert Lindsey.

Katie Benioni - Aloha, this is Katie Benioni, CFO at Kanu O Ka 'Āina Learning Ohana. I'm testifying on agenda item V.A. resolution honoring Trustee Robert K. Lindsey, Jr. On behalf of Kanu o Ka 'Āina Learning Ohana, Kanu o Ka 'Āina New Century Public Charter School and the Nā Lei Na'auao alliance of Hawaiian focused public charter schools. We would like to express our sincere mahalo to Trustee Lindsey for his many years of unwavering support. Although charter schools make up just about 6% of the total student population in the State. We continue to be a model of education reform. It's through small means though, that great things are brought to pass. And after 20 years of consistent Hawaiian focused efforts, we are seeing the empowerment of our haumana, our lahui. More and more Hawaiians are finding their voice. Our students stand proud, connected to their ancestors their 'āina, and the values. These achievements and progress could not have happened without the dedication of Trustees like Trustee Lindsey. We fully support this resolution and we mahalo all of the Trustees for their continued support of our charter schools. Mahalo Uncle Bob for your service, your sacrifice of time, energy and voice and your love for our Hawaiian people. We will miss you, but we wish you all the very best. Mahalo me ke ke aloha pumehana.

Chair Colette Machado – Thank you so much Katie. This ends the public testimony portion, members of the Board of Trustees.

IV. APPROVAL OF MINUTES**A. October 13, 2020**

Chair Colette Machado – Members we are not on IV., which is the approval of October 13, 2020. The Chair would like to entertain a motion. I'll call on our Vice Chair Trustee Lee to make the motion.

Trustee Brendon Kalei'aina Lee moves to approve the minutes for the October 13, 2020 meeting of the Board of Trustees.

Trustee Carmen Hulu Lindsey seconds the motion.

Chair Colette Machado - It's been moved and seconded. So, any discussion members before we call for the roll call. Madam Secretary roll call vote please.

Trustee Brendon Kalei'aina Lee moves to approve the minutes for the October 13, 2020 meeting of the Board of Trustees. Trustee Carmen Hulu Lindsey seconds the motion.						
TRUSTEE	1	2	*AE (YES)	A'OLE (NO)	KANALUA (ABSTAIN)	EXCUSED
TRUSTEE LEINA'ALA AHU ISA			X			
TRUSTEE DAN AHUNA						x- Mic technical difficulties
TRUSTEE KALEI AKAKA			X			
TRUSTEE KELI'I AKINA			X			
TRUSTEE BRENDON KALEI'AINA LEE	x		X			
TRUSTEE CARMEN HULU LINDSEY		x	X			
TRUSTEE ROBERT LINDSEY			X			
TRUSTEE JOHN WAIHE'E			X			
TRUSTEE COLETTE MACHADO			X			
TOTAL VOTE COUNT			8			1
MOTION: [] UNANIMOUS [x] PASSED [] DEFERRED [] FAILED Motion passes with eight (8) yes votes and one (1) excused.						

V. NEW BUSINESS

A. Action Item BOT #20-08: Approval of A Resolution of the Office Hawaiian Affairs Honoring the Contributions of OHA Hawai'i Island Trustee Robert K. Lindsey, Jr., to OHA and its Beneficiaries

Chair Colette Machado – Thank you, Madam Secretary. We will now move on to the main motion tonight, which is under V. New Business. It's an action item. BOT #20-08, which is the approval for resolution of the Office of Hawaiian Affairs honoring the contributions of OHA Hawai'i Island Trustee Robert K. Lindsey, Jr. to OHA and its beneficiaries. I'll call on Sylvia. Sylvia, are you going to read the reso or are you and Kama going to combine?

Sylvia Hussey, CEO – Thank you Chair. I will have a Kama read the resolution and at the end of the resolution Trustees we will go ahead and share with you the momento and makana that accompanies the resolution in honor of Trustee Lindsey's service. So I'll turn that over to Kama and at the end will go ahead and show on the screen

the momento that was a part of the resolution from both the Office of Hawaiian Affairs, and a community organization Kahua Paamua. Go ahead Kama, thank you.

Kama Hopkins - Mahalo Nui e Ka Pouhana, Chair, Trustees. Kama Hopkins for the Office of Trustee Robert K. Lindsey Jr. Presenting:

“A RESOLUTION OF THE OFFICE OF HAWAIIAN AFFAIRS HONORING THE CONTRIBUTIONS OF OHA HAWAI‘I ISLAND TRUSTEE ROBERT K LINDSEY, JR., TO OHA AND ITS BENEFICIARIES.”

WHEREAS, Robert K. Lindsey, Jr., was sworn in as an OHA Trustee on April 16, 2007, succeeding OHA Trustee Linda Dela Cruz as the Hawai‘i Island trustee after her untimely passing on March 15, 2007; and

WHEREAS, Trustee Lindsey believes in servant leadership and in that service one should be gentle, patient and kind while listening, learning and communicating with necessary stakeholders before making any decision, but should never be afraid to be assertive when required; and

WHEREAS, Trustee Lindsey served in multiple leadership roles within OHA which allowed him to advocate for internal OHA policy changes regarding communication, self-governance, fiscal resource and asset management and employee development which in turn helped OHA better serve its beneficiaries; and

WHEREAS, Trustee Lindsey became a member of the Hawai‘i Island Legislative Caucus in 2009 and collaborated with Hawai‘i Island legislators to advocate on bills and issues impacting OHA beneficiaries; and

WHEREAS, Trustee Lindsey, in his working relationship with the OHA Board of Trustees, the OHA Administration, Federal officials, both elected and appointed, the Hawai‘i Island Legislative Caucus and other legislators, numerous State of Hawai‘i officials, numerous Hawai‘i County officials, both elected and appointed, community organizations and leaders, OHA beneficiaries and non-beneficiaries, found success with projects, funding and advocacy work supporting OHA beneficiaries on Hawai‘i Island, the State of Hawai‘i and beyond such as a new cafetorium for Keaukaha Elementary School, the development and implementation of the Veteran-To-Farmer or “Farming for the Working Class” program, additional support for Hawaiian Focused Charter Schools, emergency funding on two separate occasions for OHA beneficiaries on Hawai‘i Island affected by volcanic eruption and lava flows, additional financial support for students pursuing post-high school education both here in Hawai‘i and beyond; and

WHEREAS, Trustee Lindsey is always quick to praise others for their work in the aforementioned achievements and other successes achieved on behalf of OHA beneficiaries; now, therefore;

BE IT RESOLVED, that the OHA Board of Trustees expresses its appreciation for the 13 ½ years of service, advocacy and leadership of OHA Trustee Robert K. Lindsey, Jr., a former Chairperson of the Board of Trustees of the Office of Hawaiian Affairs, a former Chairperson of the Committee on Beneficiary Advocacy and Empowerment of the Office of Hawaiian Affairs, a former Interim Chairman of the Committee on Resource Management of the Office of Hawaiian Affairs, a former Vice Chairman of the Committee on Asset Resource Management of the Office of Hawaiian Affairs and the current Vice Chairman of the Committee on Resource Management of the Office of Hawaiian Affairs; and

BE IT FURTHER RESOLVED, that the OHA Board of Trustees expresses its gratitude and sends its aloha to the ohana of OHA Trustee Robert K. Lindsey, Jr. for their support of him and his service to OHA and its beneficiaries; and

BE IT FURTHER RESOLVED, that the OHA Board of Trustees further expresses its gratitude to the elected and appointed federal, state, city and county officials who collaborated with OHA Trustee Robert K. Lindsey, Jr. for “...the betterment of conditions of native Hawaiians...and Hawaiians”; and

BE IT FURTHER RESOLVED, that the OHA Board of Trustees particularly expresses its gratitude to the many community leaders and OHA beneficiaries who also collaborated with OHA Trustee Robert K. Lindsey, Jr. for "...the betterment of conditions of native Hawaiians...and Hawaiians"; and

BE IT FURTHER RESOLVED, that a certified copy of this Resolution be transmitted to OHA Trustee Robert K. Lindsey, Jr. and his ohana.

ADOPTED, this _____ day of October 2020, island of Hawai i , State of Hawai i, by the Board of Trustees of the Office of Hawaiian Affairs in its regular meeting assembled.

Sylvia Hussey, CEO - Thank you Kama. Trustees we will go ahead and share with you the images of the momento that was commissioned and made by student artisans. A ku'i ai board. And then the inscription on the plate here with Trustee's years of service and an olelo noeau that is meaningful as well as a mahalo to the service to the organization. And then this is the makana delivered this morning to Trustee by Executive Director David Fortis of Ka Hua Paa Mua, whose gift is the stone, and OHA's gift is the board. So it's an appropriate companion piece together and then Trustee here with the makana on behalf of the Office of Hawaiian Affairs. Thank you Chair.

Chair Colette Machado – The Chair would like to acknowledge just the Vice Chair Kalei'aina Lee to do the motion to approve the action item 20-08.

Trustee Brendon Kalei'aina Lee moves to approve a resolution of the Office of Hawaiian Affairs honoring the contributions of OHA Hawai'i Island Trustee Robert K. Lindsey, Jr. to OHA and its beneficiaries.

Trustee Carmen Hulu Lindsey seconds the motion.

Chair Colette Machado - Thank you Trustee Carmen Hulu Lindsey. With that said, members Madam Secretary, can you do a roll call vote, please?

Trustee Brendon Kalei'aina Lee moves to approve a resolution of the Office of Hawaiian Affairs honoring the contributions of OHA Hawai'i Island Trustee Robert K. Lindsey, Jr. to OHA and its beneficiaries. Trustee Carmen Hulu Lindsey seconds the motion.						
TRUSTEE	1	2	'AE (YES)	A'OLE (NO)	KANALUA (ABSTAIN)	EXCUSED
TRUSTEE LEINA'ALA AHU ISA			X			
TRUSTEE DAN AHUNA			X			
TRUSTEE KALEI AKAKA			X			
TRUSTEE KELI'I AKINA			X			
TRUSTEE BRENDON KALEI'AINA LEE	x		X			
TRUSTEE CARMEN HULU LINDSEY		x	X			
TRUSTEE ROBERT LINDSEY						x-recuse
TRUSTEE JOHN WAIHE'E			X			
TRUSTEE COLETTE MACHADO			X			
TOTAL VOTE COUNT			8			1
MOTION: [] UNANIMOUS [x] PASSED [] DEFERRED [] FAILED Motion passes with eight (8) yes votes and one (1) recusal.						

Chair Colette Machado - Thank you members. I wanted to, show the picture of our makana to Trustee Robert Lindsey. Kama are you still there with you ukulele I would like to do Hawai'i Pono'i with our Hawaiian flag in honoring for his years of service with this flag box.

VI. COMMUNITY PRESENTATION

Chair Colette Machado – We are now going to move on to VI. Which is community presentations. I am honored at this time to give the duties of this portion to Robert K. Lindsey, Jr.

Trustee Robert Lindsey - Mahalo, Madam Chair, and you know, before I go into the Community presentations, if I could just quickly say mahalo to everyone for your kind and thoughtful remarks under public testimony and to our OHA Administration and to my colleagues, for your very thoughtful resolution and for this beautiful makana. Its a poi board which I will make sure our grandsons get to use, so that when they grow up they'll know pound poi.

Right now, the only know how to eat it out of a bag that we get from KTA. So thank you so much everyone. Moving on to Community presentations. We have 4. Pōhāhā i Ka Lani followed by Vibrant Hawai'i, Kailapa Homestead and Hui 'Oihana Native Hawaiian Chamber of Commerce. So I'd like to start with Pōhāhā i Ka Lani and Kūlia Potter.

A. Pōhāhā i Ka Lani - Kūlia Potter

(Please find attached Pōhāhā i Ka Lani powerpoint presentation. Kūlia walks the Trustees through her powerpoint presentation.)

Kūlia Potter – Aloha, my name is Kūlia Tolentino Potter and I founded Pōhāhā i Ka Lani back in 2001. The mission was basically to revitalize and advance indigenous Hawaiian culture. As a teacher, I wanted to be able to not only teach my students in classrooms, but also provide opportunities beyond the classroom. This is my father. He and I founded it. So his biggest thing was not to go for grants in the first 10 years. He had me work extra and he said if you understood what it takes to do things without anything, then when you do have, you know you have the right path. And when it comes time that you don't have, you can still continue. He didn't want it to fold.

We started our programs at Napo'opo'o in the valley. It's largest village site in right below Hi'ilawe. In that village area, there's over 400 terrace rock walls. So, we have to do everything by hand. That's our view while we're working. So, this is kind of like how the taro patches look. Everything needs to be done by hand. We are not like other farmers where we can use machines. So, clear out lo'i as you can see on the picture on the right we have weed mats becuase its a pain to hand weed everything. So we keep rotating. The weeds that we pull up from the lo'i we teach the kids how to use it back for the land and so we put it under the weed mats and then when it breaks down we push it back into the lo'i.

The left side shows the aerial shot and so you can kind of see that how the trees are. Once there, the lo'i, basically we leave that kukui trees up, so that is used for our mulch. To get to the parcel we have to hike in about 10 minutes down two steep hills, so we don't want to carry fertilizer. So we just wanted to use as much organic matter. So, when we are harvesting we have to carry everything up. So you can see on the right side is how after we cleared all the coffee trees, they till the soil by hand and then we're getting ready for planting.

So, this kind of shows what is still needed to be open. This is all African Tulip trees on the right side. And because no machines can come, if you look on the left side is a platform where the haku malama 'āina person used to live. So, we use 'ō'ō bars to take out sections of the trees just so that we don't have to use poisons. Even the next one you can look at different like groups that we host. We only had our first employee the last couple of years, so for 15 plus years, we relied only on volunteers to do all of this work.

The next slide you'll see of all the colleges that come down. And so, you can see the left side is our backdrop and the upper parcel and so that's where the teahouse area is. If you ever heard of that, the right side we just cleared out major African Tulip trees by hand. This is the teahouse. And we didn't know that this existed, this foundation. It was totally overgrown. And what happened was one of my students was going for his anthropology degree and came and came across the pictures. We realized that this was below all the invasive trees and all below the thick

vines. And so, we had cleared it. The wrap around below this foundation. It's about just 20 feet of rock walls on the other side. The top area was a fish pond. That's is the road below the left side picture, is all White River rocks as well.

This is just an example of like how we got this recent parcels an we're just getting help from university students. Hand clearing again and then on the next slide, you'll see that we were planting ohia trees. This one is the cleaning up of trash. There's a lot of trash that was buried in this area so we cleared it and then we planted. So, one of our specialties is we like to plant a lot 'ōhi'a. And we have about 16 different colors. Because when we plant by seeds, even though you have the yellow seeds, the yellow flowers it will come up different colors and we're doing as best as we can to protect it from rod.

So, besides our parcels in Waipi'o Valley, we also restored Koa'ekea. And this is at the Waipi'o Lookout area. This area is through the punk parcels from the Hawai'i County. So to this we had no employees also, so everything was done through volunteers. On the left you can see it was just ficus trees all these different invasive on the right, we took out about 30 trailer loads of trash. So, this is an example of the type of trash that was taken out from that parcel. There were 13 abandoned vehicles on property and so we removed that. All that vehicles and what we did is we planted things like vetiver that could clean the soil. So, this garden replaced the first picture, when you saw the ficus trees and the overgrown area. So this is where we've been feeding a lot of people from. We have a lot of different native bananas, and so we've been passing it out to families to keep the varieties going.

That site, after we did all that cleaning we wanted to welcome the community. And so with the help of Uncle Jerry Konanui we often did poi board workshops. And the boards were made with the wood from the place Koa'ekea. In addition, we did other workshops, so we taught them the story of Nanauea. Then some art work also was then we had Hano and his wife Maile come down from Moloka'i to help us. And then they shared their story, their version of Nanauea. Then we also recently got Mahiki, the area of Mahiki Lalakea and so we're pretty much trying to prevent erosion. So we had vietever planted along the pali end because we were receiving landslides from above.

In that area we also did workshops on poi boards. Our biggest thing was to get a lot of huli out to people from Waipi'o and then also teach them how to make their own papa and pōhaku ku'i 'ai. In the area that parcel, we also take care of Waiholoa. This slide you can see how we was removing the invasive gingers and spreading ohia seeds. Over there is the most beautiful ohia trees. So we're just trying to get the invasive out. So this is Kilohana. If you kind of look good, you can kind of see the vetiver and it was planted all on the sides. So that we could stabilize the areas on the edges.

So when COVID came, we had to shift what we did an instead of constantly offering our programs to school groups. We have to respond in a different way. So because we had so much help from people to restore all the taro patches, grew ulu trees. We just figured that we could help out. And so we started providing huli, and ulu trees and uhi, uala, everything that you could imagine to help families. We knew that food was one thing, but we wanted to secure them with their own farms. And so we issued out food and plants or trees. So this is our way to try and help out. We also provided traditional lā'au. We heavily grow mamaki in Waipi'o. We provided guidance. We got help through OHA through 'Āina Mōmona to assist us to further expand the amount of families that we helped. We started off with only 50 and we grew to 200. Just provide anything that they needed that they wanted to. We gave them suggestions and then they asked us what else plans did they need it.

So these are my daughters. There are our biggest helpers with this project. You can see the taro leaf and then we also grow spinach in that area. So this is mamaki on the right side. It's huge down in Waipi'o. So we've been offering it to a lot of cancer patients, people who were having a little more anxiety during this time, especially. So it's one way that we could help. On the left side is the types of huli that we would give, and we'll teach them about the different varieties. This again are various helpers. And so we had tried to pick foods that we knew that would also encourage them to be healthy.

So guavas we realized that it had four times the model vitamin C. So our kids were our crew and we would pick buckets at a time because we have acres of guava trees. So what we did when we had extra ulu, uala and kalo we went ahead and made sourdough breads and also gave that out. And then we also tried to teach them. This is other examples of what we gave out that we grew, everything was pretty much what we could gather from our farms.

Besides giving food to people, we still continued with our kuleana. This is how Koa'ekea transitioned. If you look at all that purple things, that's all sugar cane. So we also provide sugar cane juice, lots of bananas come from that parcel. This is looking in from the other angle from the valley angle looking upward of Koa'ekea. And this is Lālākea. You can't really see the plants right now, but that area where there's the two vehicles the two white vehicles, that is a huge community garden that a lot of people came out and help us plant anywhere from ulu trees, milo, lots of citrus, lots of flowers. Lots of plants because we wanted to make sure that our kids had areas to go gather their Flowers.

This is Mahiki. This is our biggest task right now. The place is being trashed and so we are dealing with heavily removing toxic waste that people are dumping there. Their trash from home, green waste, lots of abandoned vehicles. So yeah, this is our new focus besides feeding families. So this is in Waipio. Just us continuing with the kuleana also down there. If you look good, there's a man in the kukui tree. We needed to trim the kukui so that the ulu could get more sunlight. You guys have any questions.

Trustee Carmen Hulu Lindsey - Chair, I'd just like to thank them for such good work you folks are doing. Mahalo nui. Thank you.

Kūlia Potter - Thank you.

Chair Colette Machado – Kūlia you folks work is very impressive. Just working so hard cleaning all that land by hand its impressive. Your dad was right no rely too much on the support. Then it will be easier to demonstrate your skills and the kind of aloha you folks have for the 'āina. That was the first thing you folks did was to get to know the 'āina there. Such a beautiful experience for everyone that participated. Thank you.

Kūlia Potter - Yeah, it really helped with that lesson from my dad because during COVID time all our grants got pretty much cancelled and we had to still do because we wanted to make sure we could still help. And so we were so fortunate that when 'Āina Mōmona came out and helped us through OHA with the food programs and now through the Strong grant it is helping us to also feed people while also hiring people for help us mahalo.

Chair Colette Machado - Thank you for sharing.

Chair Robert Lindsey – Kūlia I want to thank you for all the good work that you folks are doing in Waipi'o. Thank you so much. nd thank you so much for your wonderful presentation. Any more questions or comments for Kūlia?

Trustee Leina'ala Ahu Isa – Trustee Lindsey.

Chair Robert Lindsey – Trustee Ahu Isa.

Trustee Leina'ala Ahu Isa - I also wanted to commend Kūlia. That was really impressive, beautiful, I mean just the view and all the work looking at those trees. I thought they were albezia but you said no. They're not. That's really hard work. And then to find the teahouse that was already there. And was buried by all this. So are you folks going to build on top of that?

Kūlia Potter – Yeah, we are trying to figure it out because there's that big glass foundation. It would be nice to take off the glass part and then build a traditional hale on top of all that pohaku.

Trustee Leina'ala Ahu Isa - Just thinking of ways to fund you folks how you can get tourists. My mind is all on economy. Yeah, just thinking how, because it's so interesting and it ties into the cultural and historical with this whole area. Thank you. I wanted to just thank you Kūlia. Mahalo.

Trustee Kalei Akaka – E kala mai Uncle Bob.

Chair Robert Lindsey – Trustee Kalei Akaka.

Trustee Kalei Akaka – Mahalo Kūlia for sharing that wonderful presentation with us and I have such fun memories back in August of 2018 when my 'ohana and I and our friends, we went down to visit you folks at the teahouse and how you hosted us there and having to opportunity to take photos there of Hi'ilawe in the background and also that wonderful meal that we all shared together amongst the lo'i and just being able to put our feet in the stream water. It's so refreshing and I just really, really mahalo you folks for making it possible for our keiki, our kupuna and malihini to experience what they're able to down there with all the aloha that you put into 'āina over there and even just being able to share the fruits of your labor with those that visit there. So 'ono. I hope as time goes on that you know there can be more done in the area to sustain it. Whether it's tourism and of finding more funding and seeing how we can collaborate down the line. And hopefully maybe one day we can, maybe as a group OHA, we can do a site visit there together. That would be lovely.

Kūlia Potter - Yeah anytime.

Trustee Kalei Akaka – Mahalo Kūlia.

Chair Robert Lindsey - Mahalo Kūlia for taking some of your time and spending it with us this evening. Take care and keep up the good work.

Kūlia Potter – Thank you.

B. Vibrant Hawai'i - Janice Ikeda

Chair Robert Lindsey - We'll move on to Vibrant Hawaii and Janice. Janice will be doing a verbal presentation.

Janice Ikea – Aloha nui kākou. The Coqui are alive and well. It can be overwhelming when you're on the other side of the Zoom, so I'll try and keep this brief. Mahalo Kūlia for sharing. I'm always so inspired by your work. So we are a growing community an affinity collective that commits to individual and collective 'auamo kuleana to increase equitable opportunities to build wealth. What we define wealth as is an abundant reservoir of human social, natural, and financial capital that we contribute to and draw upon.

Our kuleana is to convene conversations so that all wa'a travel toward a common goal and you don't feel like everybody has to be in the same wa'a. In fact, we want everyone to stay in their own wa'a and be excellent at what they're called to do. But for us to travel together on our island. And we do this so we can build community awareness, will and action from the foundation of our shared values. Shift deficit narrative systems and policy that perpetuate poverty and inequity. And implement strategies that are developed and resourced by our community and reflect Native intelligence.

In early April we were really fortunate to partner with a number of organizations on our island and I want to mahalo OHA for being a part of this program that we launched in early April, just at the onset of COVID. It was called Ola Nā Iwi. It was a program to support our kupuna and their food resilience at that time it was very important for our kupuna to be in indoors and staying safe in that way. Office of Hawaiian Affairs, Hawai'i Community Foundation, Hawai'i Rise Foundation, Kamehameha Schools, Lili'uokalani Trust, Hawai'i Island United Way, KTA Super Store, Ok Farms, Suisan, Hui Malama o Nā 'Oiwi, and the Hawai'i County Office of Aging along with Vibrant Hawai'i all came together to pull this off. An incredible 16 weeks of programming.

OHA supported the project by funding over \$76,000. So the outcomes of this project was 31,500 kupuna meal kits were delivered which came out to about \$2.43 per meal. Even more exciting was as a result of this project which was truly community driven we saw a number of young volunteers getting out on an ongoing basis within their districts, going door to door, and getting to know their kupuna and build relationships. Through weeks of building relationships what this resulted in is conversations and trust that typical social services were not able to have with kupuna readily. What we did is had conversations about signing up for SNAP and other kinds of benefits for ongoing food assistance. Because we know this program wasn't going to last forever. We trained the volunteers on how to help kupuna sign up for SNAP and other local programs that they could access for ongoing food support.

It gave our young volunteers a sense of purpose in their community at a time when many were being laid off and unemployed. I think the most exciting part was just seeing people connecting when we think about community resilience relationships are the most important factor in that and so. Mahalo for being a part of that. I have a really quick video to share just to show how this all came together. So that's a quick screenshot of sampling of what they received in their in their meal kits. So the community that I just showed you was our Maku'u community out there. You may have recognized some folks. It was in the end such a beautiful project to be a part of and to be able to collaborate with everyone in that way.

In addition to that, what Vibrant Hawai'i engages in and some of the different streams that we work in is around education, financial resilience, workforce and community resilience, economic resilience and we have a housing coalition. So those are the main areas that we are focusing on in the work of our streams. Right now we're really fortunate through a CARES grant from the County of Hawai'i to be focusing on two streams, primarily our workforce and community resilience stream, received a grant. We are providing mental health, first aid, building capacity on our island with mental health first aid instructors. Immediately by the end of this project, which will come to a close in December, we will have trained about 500 folks in our community and certified them in mental health first aid.

As well as we are working with Danny Goya and Keala Hoaka to develop a trauma informed care community of practice that provides a two lens, Western and indigenous approach to trauma informed care and building resilience in our community. In addition to that, our second grant that we have that we're working on right now is our network of resilience hubs. We have about 47 community hubs around our island, community hubs and programs. They provide food assistance. They provide connectivity assistance for keiki and community members who are needing to connect and don't have Wi-Fi or laptops readily available to them. Through this project, we're able to support over 30 local area restaurants and a number of local farms in sourcing all of our food there. We are providing on average, about 7000 meals per week.

In closing I just wanted to share with you some of the folks that are a part of this project. Breeani Sumera Lee is Executive Director of Hawai'i Raise Foundation. They are our fiscal sponsor. They do all the accounting. They do an amazing job every week supporting the project. This here is one of our communities that we're working with to provide food assistance Nānāwale Community Association. This is an example of another kind of resilience hub that in addition to food is also providing connectivity, so our Pana'ewa Farmers market very resourceful. Got a generator under their pop-up tents and that's how they're charging up all of their laptops and everything else to be able to provide that service for community out there through that they've expanded to now, including a coding program for keiki. And one of our other programs that go and support all of the hubs around the island is our Honeybee Education program, and teaching everything from beekeeping. There's probably fancier words for beekeeping, but distributing ulu trees, distributing gardening supplies for families to begin to plant their own gardens and this is just an incredible project that has happened very quickly. Come together very quickly and it is all a testament to just the goodness of the people of the communities on Moku o Keawe. Their resilience, their ability to collaborate, their resourcefulness and their aloha for one another, Mahalo nui.

Chair Robert Lindsey - Did anyone have questions?

Trustee Carmen Hulu Lindsey - Just want to mahalo you for such a great job that you folks are doing. Thank you so much.

Trustee Kalei Trustee Akaka - I would also like to mahalo Janice for sharing the power of collective impact. It's so beautiful to see images of our keiki and our kupuna coming together in our communities in Pana'ewa and beyond and having gone to the farmers market over there it's nice to see the work of our people in terms of healing and working on resiliency. Especially during these times, but even preparing them before these times hit us, so mahalo for all that you think that you do together and looking forward to hearing maybe if we can do even more, and if you could maybe share with us down the line how we can do that.

Trustee Keli'i Akina – Chair. I just want to say to Janice mahalo for sharing with us. We appreciate it greatly, especially the level of collaboration, and you certainly have a model that I would like to see it on other islands, and certainly on O'ahu. Mahalo

Trustee Leina'ala Ahu Isa – Janice has hit on something that's pretty unique like I'm trying to figure out what the Vibrant Hawai'i was. So I kind of went into your page here. Your consulting services and I just want to read a little bit of something I found that to me is like the essence of what to do. It's called December. Take it slow. This one don't get caught up in everything. All the noise savor your last moments of this year's trip around the sun. Remember how brave you have been. Open your beautiful eyes to the good energy around you. Acknowledge how far you have come this year. Let your heart soften that your lungs exhale. You've achieved something very beautiful this year another year. Hug close those that make your eyes sparkle when you think of them. Live the magic my darlings, don't just believe in it and it just to me is an example of what Bob Lindsey, who I have got to know over these past few years, being a new Trustee, you know when you were Chair. I want to kind of dedicate that little thing to you from Janice's blog. Mahalo.

Chair Robert Lindsey – Thank you so much Trustee. Thank you again, Janice, for your beautiful presentation.

C. Kailapa Homestead - Pua Lincoln Maielua

Chair Robert Lindsey - We will now move forward to Kailapa Homestead to Pua. Pua sent us her PowerPoint over the weekend and it was distributed to everyone on Sunday. So Pua are you ready?

(Please see attached powerpoint presentation from Kailapa Homestead Ko A Kai.)

Pua Lincoln Maielua - Yes, thank you, Uncle Bob. Mahalo nui Uncle Bob for all that you've done for community or island and our people, our keiki are so grateful for your gift to our Kailapa playground and we are beyond blessed to have your ohana a part of our homestead here in Kawaihae. I saw, like wanted knowledge, the great work of Kūlia and her ohana in Waipi'o and a special model to Janice and Vibrant Hawai'i for all of the support during COVID and continued care of our community. Kailapa is very grateful for our weekly meals and our new hub set up in our Community Center. Mahalo nui.

My name is Blossom Pualani Lincoln Maielua and I am honored to present to you today on behalf of Kailapa Hawaiian Homestead, and Kailapa Community Association. We are located in the ahupuaa of Kawaihae Komohana or Kawaihae one in the renown moku of Kohala, of course of the moku of Hawai'i. Our homestead is one of two in the entire pae 'āina. That is established upon ahupua'a or a traditional land system designed by our ali'i and konohiki of the past to ensure that all kanaka residing within those boundaries had access to the all the resources necessary to sustain life and to thrive.

We have about 190 residential homestead leasees here, all located in the makai portion of the ahupua'a. The entire ahupuaa of Kawaihae Komohana encompasses over 10,000 acres. Kailapa Hawaiian Homestead is a part of the Resilient Hawaiian Community Initiative. In 2019 we completed our community resiliency plan called ehu ehu i ka pono, which calls for a community to come together and thrive in balance. In order for this to happen, we need

to return to the ancient values of mālama ‘āina and reestablish our familial relationship to the land. With source kinship as the focus of our connection to our ocean shoreline and mountain resources and ehu ehu i ka pono is possible.

To further introduce our aina to you, we would like to share a few olelo noeau or traditional proverbs that highlight the natural element elements recognized by a kupuna that continued to sculpt the practices of our families and community today. Nā makani paio lua o Kawaihae, referencing the two conflicting winds of Kawaihae. The wind of our ‘āina is most definitely a dominant element, and one might argue is more supreme than even the impact of the sun here.

The second is ka ua nāulu o Kawaihae that speaks of the rain of Kawaihae that only a native of this area can predict through close observation of our unique winds weather patterns. Kawaihae i ke kai hāwanawana is often defined as Kawaihae of the whispering sea. But as kupu of this ‘āina I believe this is actually speaking more about the ability to hear the slightest whisper from makai when upland. When we are truly in tune to this place, we can hear the tides change, the surf pick up and during the hooilo season we can hear the whale swimming just offshore.

Our final ‘ōlelo no‘eau is pua ka lehua. It is a saying of the people of Kawaihae but not referring to the lehua blossoms of the ‘ōhi‘a tree rather poetical reference to the schooling of aku and the fishermen preparing their canoes for sea. These ‘ōlelo no‘eau remind us of our important connection to the elements and geography of Kawaihae Komohana and most significantly, our obligation to the resources of this ahupua‘a in order to thrive. While we have many initiatives underway to enact our resiliency plan will be focusing our time today, sharing with you about our Ko a Kai project.

Ko a Kai means shore dweller or belonging to the shore or sea. It is from this traditional perspective that Kailapa Community Association has designed a plan to steward the 72 acre coastal shoreline of Kohala and Hawai‘i Island. As we are as an island people, we recognize that our resources are finite and we are responsible for ensuring that those resources are thriving for us today and for many generations to come. We want to recognize first and foremost how important our partners and collaborators are in accomplishing this work. And while as an Association we represent our small, humble homestead, we know it takes an entire island of aligned visions and missions in order for us to thrive in balance.

We are extremely grateful to all of these contributors for believing in our quest and supporting us in so many ways. Our goals and objectives for Ko a Kai are resource stewardship, subsistence living, and establishing a thriving community. Our top three obligations to meet our goals are securing safe and legal access to our shoreline, inclusive of fencing, gates parking, educational signage and designated shoreline trails as well as establishing ocean mooring and anchoring protocols. Restoring and preserving the ancient fishing village and archaeological sites such as housing structures, walls, shrines, fishing koa and traditional trail systems and stewardship. Resource stewardship is our chosen strategy rather than resource management. A stewardship is an action of reciprocity and relationship.

Our priority is to build strong familial ties between our Kailapa homesteaders and our ocean resources as we embrace our role as Ko a Kai. Our initiatives are well underway and it came in the perfect time of COVID-19. I think that's been kind of the theme of all the presentations and sharing today. COVID helped us to reset our priorities as a community. It also gave us the time to be present and here in our community. We were able to secure and establish safe access back in May of this year and since that to our makai parcel and since then we have noticed tremendous growth in our marine organisms and extreme cleanliness of our shoreline. While our coastal resources aina rest from overfishing, vehicle recreation and camping activities.

About 5 full moons ago our community and ‘ohana ranging from keiki to kupuna, gathered together to plant 24 niu to physically represent our presence and commitment to our shoreline and ensure that for us the sacred suspended water will be present for many generations to come and that they will always, our future generations and our keiki will always have wai or wai nui when accessing makai in the future. With the planting of our niu ola came the kuleana of caring for it, and with no established water system makai our families have committed to watering these

niu by hand. For the first several weeks we are watering every couple of days and from then it is tapered down to once a week.

Our niu are growing strong and resilient as we are along with them and our keiki have stepped into this kuleana running the water tank and the five-gallon buckets themselves to each niu. The joy that our keiki expressed when working together amongst family, neighbors and dedicated community members is immeasurable by far. It epitomizes to us, aloha 'āina and when we work alongside our keiki and they take the lead, we know that our mission and vision is aligned to their own ola and the resiliency of this place.

As mentioned earlier, our homestead encompasses the entire ahupua'a of Kawaihae Komohana, and we would be incomplete to not share with you some of our mauka connections and discoveries. Dr. Michael Graves and his student Catherine Peck have been studying the upper portion of our 'āina since 2017. And have found a remarkable amount of agricultural terraces and ancient sites that link directly to our coastal lands and support our overall mission to reestablish our ahupua'a practices and traditional watershed. What we have noticed through these studies is that these ancient sites tell us where the water is and we believe that if we restore these sites we will find our water too.

In alignment with our mauka studies, we have partnered with Noho Papa and Ala Kahakai to conduct similar studies of our makai parcel. We opened up this important work a few weeks ago with an 'aha 'awa to set our intentions as a community on restoration and stewardship. It was a beautiful gathering in honor of our 'āina kupuna and our collective commitment to protect, restore and steward our cultural, natural resources for generations to come. It was very different to run a ceremony during COVID, it was the first one for sure for us. Everybody was masked up and what was really beautiful about this ceremony is that instead of ingesting or consuming the 'awa themselves, every community member who was present actually walked 'awa out to a piece of the 'āina in front of them and fed it to the land.

After our call our 'awa ceremony, our cultural resources survey began right away consists of four phases and we have begun that very first phase of geospatial and remote sensing using drone technology for aerial identification of ancient sites and trails. This phase will allow for our pedestrian recon survey of phase two to successfully map the entire 72-acre parcel. A restoration plan will then be created based on these findings, of which we will present to our Kailapa Community in the final phase. This is one of the photos from one of our flights the other week.

This cultural resource survey will furthermore instruct and guide our ocean access plan and protocols, ensuring that our homesteaders here in Kawaihae Komohana and Kailapa will have safe and appropriate access to our makai resources for many generations to come. We want these two plans to work together towards our mission and goal of ehu ehu i kaponō. And we'd like to close with these words of our kupuna, the land is the chief and man is its servant as we continue to serve our 'āina kupuna with our families, we are committed to resource stewardship and our mission of ehu ehu i ka pono. Pictured here are not only our loving, keiki of Kailapa Homestead, but more importantly, lineal descendants of this 'āina representing generations of families of aloha 'āina and resiliency and Kawaihae Komohana. Mahalo.

Chair Robert Lindsey – Mahalo Pua for your wonderful presentation to our Board this evening. Any remarks or manao for Pua from the Board.

Trustee Dan Ahuna – Trustee this is Dan Ahuna.

Chair Robert Lindsey – Yes Dan go ahead.

Trustee Dan Ahuna - I just want to say thank you to Pua and you know her continuous participation in how she develops these ideas and how they work as a collective. You know it's always about her actions and I appreciate her continuous work that she does in these communities. So thank you Pua so much. You know you're just continuing exactly where you left off when I last saw you, so thank you so much.

Pua Lincoln Maielua – Mahalo nui.

Chair Robert Lindsey - Thank you Trustee Ahuna. Anyone else?

Trustee Kalei Akaka - Uncle Bob, if I may.

Chair Robert Lindsey - Yes, go ahead Trustee Akaka.

Trustee Kalei Akaka – Mahalo sharing all that you have tonight it's certainly impressive the action oriented type of community that you folks have at Kailapa homestead. It's unlike what you normally see in a homestead. Seeing how the community comes together, planting of the niu and even taking more measures to learn about the potential of the land based off of what has been done in the past. So it really is quite an example to other homesteads to maximize on what might be seen as like dry arid land to such potential. So mahalo for sharing this knowledge with our keiki there and incorporating our kupuna in the process as well. I'm looking forward to seeing more what you folks are able to do with all the goals that you have before you so Mahalo.

Pua Lincoln Maielua – Mahalo nui for your support.

Trustee Carmen Hulu Lindsey - Cousin Bob

Chair Robert Lindsey - Yes, go ahead.

Trustee Carmen Hulu Lindsey - I want to mahalo, Pua. I especially like how you folks involved the keiki. You know not all over the island are keiki being trained that way, and to have them exposed to, you know, all that you folks are teaching them from the ocean to the mountain. Mahalo nui.

Chair Robert Lindsey – Mahalo Trustee. If no one has any further questions or remarks, thank you so much again Pua my aloha to you and to everyone at Kailapa.

Pua Lincoln Maielua – Mahalo to you Uncle Bob everything all of these years. We're looking forward to seeing you home more often. And please come and check us out in Kailapa anytime. Aloha nui kakou.

D. Hui 'Oihana Native Hawaiian Chamber of Commerce - Kirstin Kahaloa

Chair Robert Lindsey – We we will wrap up our community presentations with Kirstin who is presenting this evening on behalf of our Hui 'Oihana Native Hawaiian Chamber of Commerce.

Kirstin Kahaloa – Aloha mai kākou. Mahalo Trustee Lindsey, Chair Machado and all of the Board of Trustees this evening. I hope to be as brief as possible as the evening grows deeper and darker. Mahalo for your time today. I'm really just the embodiment of representing Hui 'Oihana the Native Hawaiian Chamber of Commerce across the State and share the efforts and work we are doing in the collaboration we're also doing with the Office of Hawaiian Affairs. Mahalo for having me this evening.

My name is Kirsten Kahaloa and currently serving as the President of 'Oihana the Hawai'i Island Native Hawaiian Chamber of Commerce. We are a newly established organization so we wanted to present our organization to folks this evening. Before I get started mahalo to Pua, Janice and Kūlia for beautiful and mana filled presentations that you shared this evening and the great work that is being done on Hawai'i Island. So proud to be a resident and live here and get to learn about all the amazing community efforts to support our lāhui and our community across the island, so mahalo.

Mahalo to Uncle Bobby, Trustee Lindsey for your service. We're just honored and grateful for all you have done for Hawai'i Island to engage with our community to represent our island and be our voice and ensure that services

that OHA provides are being accessible to our community both in our larger towns and in our rural communities across the island. Since my spouse formerly worked for OHA, he also sends his deepest regards, congratulations and aloha, so Ilihia says hello, and he was very honored to be in your mahalo letter in Ka Wai Ola.

Just so just a little bit of conversations around since COVID and I'll share a little bit about our organization. I just wanted to say that during COVID on Hawai'i Island, the Native Hawaiian serving organizations came together and met biweekly to figure out plans on connecting and communicating with our lāhui on on how we can represent and better serve our community during COVID. So we did that in March and I just wanted to mahalo OHA for having a voice and a seat at the table from your local community leaders and be able to work with the other Ali'i Trust and Native Hawaiian organizations on this island to activate need and activate food distribution services as soon as they were available and as quickly as possible. The power of that activation, I think was truly remarkable and still continuing to this day. I will share my screen briefly because I thought that some visual photos might make this a little bit more exciting and entertaining. But you know, through that native lines serving organization hui is what we realized and found out is that there is a need to have a Native Hawaiian voice at the table with our mayoral candidates. It's an important seat in our community, and the need could never be greater. To ensure that the right leader is identified as the next mayor for Hawai'i County.

So, through those collaborative meetings, we were able to have all OHA's support and the Aloha Rising campaign to be able to host two Mayoral candidate forums for our community. And so we had a first Mayoral forum right before the primaries and we had one most recently several weeks ago before ballots dropped. Both forums were really important to have questions from the voices of our people to be able to be shared and heard. There were tons of Mayoral candidate forums, but they didn't always represent the voice of our lāhui and our Native Hawaiian community. So it was really important and valuable that OHA came to the table and rallied the community groups that you see on this in the flyer image on the screen to come together to be able to presents about with questions that are important for our local community.

So both forums were live. The first one was very challenging as there were 16 candidates that were still running for Mayor at the time and we had to work to whittle down to eight candidates and then host the live forum with all of them and get all the questions we needed to in a short period of time. Our more recent forum that focused on our top two mayoral candidates had over 20,000 views when it went live. As you can see in Nā Leo TV was our live hosts, but we also had KHON, Hawai'i News Now as partners making sure that the information about our form was being publicized and as far of a reach as possible. We also had live community participation and over 70 questions or even more were generated live during the 88 minute forum so that community members could ask questions directly to the candidates. And really be focused on questions that our lāhui cares about. So I just wanted to mahalo the Office of Hawaiian Affairs. I don't know if you know how important participating and hosting that forum is and will be and hopefully will be felt with the results of our elections coming soon.

So mahalo for your leadership, mahalo for leading with the Aloha Rising campaign. I think that's very important for community and will show just tremendously how the Native Hawaiian voice is voting and is now voting a lot of times, people you know, say, oh, Native Hawaiians don't vote, so we don't need to focus in our campaigns on our local community, and that is so not true. It's to OHA's efforts for being that voice and making that happen. Mahalo to Shane, Kamaile, Celia for being on the ground and helping facilitate that. Those tremendous forums that we see as an opportunity to do again in two years and four years and again across the community. Also to Davis and Mehana for their team on the background supporting us locally here. I think this model of doing a collaborative forum with OHA, with other community organizations locally on the ground for election areas that are highly important or contentious for our community is important to be a part of. It could be a model utilized in different communities across the State moving forward. I just wanted again, share our deep mahalo for being leaders and participating in our forums here locally. Arguably they were the most organized Mayoral candidate forums on Hawai'i Island. Maybe the most well attended as well, and it's great that the Native Hawaiian voice and Native Hawaiian community organizations are leading Mayoral candidate forums, as the forum to watch. Mahalo nui loa for participating and helping us execute those forms here on Hawaii island.

Just a little bit about Hui 'Oihana. We're only about a year and a half old and maybe another year in bringing the organization to fruition. But it's a rebirth of a Hawai'i Island Native Hawaiian Chamber that was here in the 90s and couldn't continue to keep to be in fruition. So we brought back the organization last year. Our first event was in October. And so the goal of the organization is to strengthen the Native Hawaiian Community and our businesses by supporting a thriving economy rooted in our language, culture and aloha. That's really important. We have over 65 members and growing. We might have more members if there wasn't the impacts of COVID, but we're still brand new. And an organization that's dedicated to thriving throughout the years and being a support and additional support to the work that's done for our community.

Some of our, I think key focus areas are all grounded around culture, community and commerce. We believe that a sustainable and resilient economy is what's most important for our community, and our voice can be the leader in that space of making sure when we think of economic growth, economic development that we think about being sustainable. And about looking to our local Native Hawaiian communities for partnership in the process for anything around our economy. We believe in a sustainable island community and have been participants and leaders with the Aloha Plus challenge and the work of Hawai'i Green Growth and also part of the 'Āina Aloha Economic Futures Initiative and believe those are really important things to help shape and tell the story of our community and be that voice in this space.

We were established or reestablished last year with the real help in support of the other Native Hawaiian Chambers of Commerce across the State. They saw the need that a voice was missing on Hawai'i Island and the Kaua'i, O'ahu and Maui County had a strong voice in that space, so they were mentors and encouragers to help us get established. When we did, we formed a collaboration MOU to really say that we want to allocate where we can together, where there's overlap and be a powerful voice to work together. So being that collective voice, the timing was great because we started to meet more frequently about a year ago. When COVID started we worked even more collaboratively and started meeting weekly or biweekly and to the support of Sylvia and her leadership during COVID there was a Hui of the Ali'i Trust, all of the Native Hawaiian Chambers of Commerce, and OHA. To make sure that our community was supported during COVID to see how we can leverage the unique leadership roles that all of our Native Hawaiian organizations play for in the space for our community and how we can work together to be the voice and support of our community.

So mahalo for OHA's leadership in convening that group where we were able to commit to doing some COVID impact surveys. Surveys on the voice of Native Hawaiian businesses and a survey that should be coming out soon on what does economic resiliency look like for our community. So we're really looking forward to reading the results of that survey coming soon. You know with that collaboration we realized that there was a need to have on the ground support for our businesses. LT was a huge player to help create a Technical Support Center or on line Technical Support so that Native Hawaiian businesses that needed to apply for SBA loans had someone they can go to. A first point of contact when they had questions about this loan process. We want to make sure that Native Hawaiian businesses have a place to go to when they need support, not just in COVID, but we want to be able to have a one stop shop business development center where Native Hawaiian businesses can look to loan opportunities, go to one place to look for entrepreneurship opportunities, how to start up a business and then those business wrap around services that a lot of Native Hawaiian entrepreneurs really need.

If there is an opportunity to have something focused towards Native Hawaiians. I think that would be really important, not just in this time, but always if we want to look at what is waiwai for our community. Part of that waiwai is being able to support our native wine businesses. We are working on an opportunity to build or see to the fruition of a business development center that is focused for Native Hawaiian businesses and encouraging a supportive and provides those wrap around services that are needed. We're also collaboratively, the four chambers as well as Kamehameha Schools, as well as the Native Hawaiian Hospitality Association are working on the development of a Native Hawaiian business directory that's online, that's free, that's for all Native Hawaiian businesses. So there's a place where if I want to find a mechanic and I don't know who is a Native Hawaiian owned business or not I can search that and start to have choices to spend money with Native Hawaiian owned businesses. Or if we think on Hawai'i Island there are some businesses that you may not think are Native Hawaiian owned businesses. But if we had a searchable database, we can not only choose to spend our money to

support Native Hawaiian businesses. We have that opportunity and that's something that we can encourage each other to all focus on.

So the Small Business Development Center and the Native Hawaiian business directory are really strong important things that the four Native Hawaiian Chambers are working to bring to fruition. We're working with other collaborators in the space who really believe this is important for our lāhui and our community. So that we can choose our waiwai and choose to be self-sustaining and self-sufficient in the work that we choose to support and feed our families. And again, we just appreciate the leadership that Sylvia has brought to the Office of Hawaiian Affairs in collaborating with the Native Hawaiian Chambers with the Ali'i Trusts during COVID. And being able to just talk story to figure out ways where all of our organizations can activate and work together to really make an impact for our lāhui. So mahalo for your time today.

Chair Robert Lindsey - Kirstin I want to say mahalo to you for spending some of your evening with us to talk about our Hui 'Oihana Native Hawaiian Chamber of Commerce. Any questions or manao Trustees to share with Kristin?

Trustee Carmen Hulu Lindsey - I just want to mahalo Kristin for her presentation. I can relate to you folks' activities and I was so happy when I found out that you folks were finally starting up in Hawai'i Island. I am a member of the Maui Native Hawaiian Chamber. It's really good to see us expanding across the pae 'āina. Thank you, Kristin.

Kristin Kahaloa – Mahalo.

Chair Robert Lindsey – Thank you Trustee Lindsey. Anyone else who might want to share manao or have questions or remarks for Kristin?

Trustee Kalei Akaka - Uncle Bob, if I may.

Chair Robert Lindsey - Oh yes, of course Trustee Akaka.

Trustee Kalei Akaka - Mahalo for sharing all that you have and I did want to know what are some of the greatest challenges putting together the directory for the Native Hawaiian businesses.

Kristin Kahaloa - So that's a great question. We have the financial support to put together the directory and the people to do so. I think the greatest challenges, all of the Native Hawaiian Chambers are volunteer leadership roles and positions. We are all leaders in our community, we are running businesses or working for organizations. So I think the time capacity to execute and facilitate that effort is of most critical need for our organization. Actually the four Native Hawaiian Chambers are working on plans for capacity building needs so that we can have a budget strong enough to be able to have at least an admin staff member, even if its part time. Because really, I think that's the crux of taking our Native Hawaiian Chambers to the next level. All of the other Native Hawaiian Chambers across the State majority of them have staffing. Whether it's one full-time dedicated person or many, and that's where they're able to activate the most advocacy and work to really supporting that need in this space of our community. To support businesses, entrepreneurship, training programs and be that advocacy voice on the business arm for Native Hawaiians.

Trustee Kalei Akaka – Mahalo for all that you are doing to help relaunch this chamber. I'm really looking forward to being able to source this directory so we can further help stimulate our Native Hawaiian economy here. Do you guys kind of have a timeline, you guys can do it?

Kristin Kahaloa - We were hoping to activate that for the holiday shopping season. So we're still working towards that goal, but we are trying to wrap that around with that business development center idea. So that they are somewhat bundled, so we're trying to determine if we keep them tied together or separate them out because the need is great to really have everyone in our community support as much money that they have the ability to do to

choose Native Hawaiian businesses first. So you know we are trying to get that off the ground. CNHA has also been helping us through that process. So you know, power of collaboration is helping bring it to fruition.

Trustee Kalei Akaka – Mahalo to our CEO for working on this as well. Looking forward to hearing more about what you guys are up to and how we can do even more together too.

Chair Robert Lindsey – Mahalo Kristin, aloha to you, aloha to Ilihia and aloha to your little one.

Kristin Kahaloa - Mahalo and congratulations Uncle Bobby.

Chair Robert Lindsey - Thank you very much.

VII. STATUS OF OHA ACTIVITIES KA POUHANA/CEO'S UPDATE ON HO'OULU LĀHUI ALOHA & OHA ACTIVITIES

Chair Robert Lindsey – Aloha, we will move on to the status of OHA activities and Sylvia if you could handle this piece please and we'll move on to community concerns.

Sylvia Hussey, CEO – Sure Trustee. Just a very short quick update so that we can get to the next agenda item. Trustees, Administration is working on four major operational areas, one of course is the implementation of our strategic plan and getting those prepared for tactical an operational plans and budgets. We're also preparing for the 2021 state legislative session as well as the 117th Congress at the federal level and then last but not least, we're also preparing for organizational changes and that is what administration is up to. Thank you, Chair.

Chair Robert Lindsey - Thank you so much Sylvia for that quick status update on OHA activities.

VIII. COMMUNITY CONCERNS

Chair Robert Lindsey - I'd like to move on now to community concerns. Carol or Dayna do we have anyone signed up?

Dayna Pa – Chair Lindsey we have three people signed up for community concerns. The first is Kaimi Kaupiko.

Chair Robert Lindsey – Kaimi before you do your presentation I need to read off a short statement and it's pretty much a repeat of what Chair Machado explained under public testimony earlier. Community concerns allow the public to provide testimony on matters not listed on the meeting agenda. It is optional and not a requirement of Hawai'i Revised Statutes Chapter 92 Public Agency Meetings and Records. Board members are not required to respond to matters not listed on the meeting agenda. Once the community concern section on the agenda has concluded, oral testimony online will no longer be accepted.

Your name will be called and your microphone will be unmuted when it is your turn to testify. If you are not audible for whatever reason, you will be muted and the next testifier will be called. Your name will be called again before the conclusion of the community concerns section. Please state your name, organization if applicable and provide your comments on the matter you wish to testify on. All testimony will be limited to 5 minutes. A timer will be on the screen to countdown the time. A chime will sound when you have 30 seconds left and a second chime when your testimony time expires. Your mic will automatically be muted once you have completed your own testimony or if your allotted time for testimony expires. So Kaimi it's nice to have you this evening. Please unmute your mic and present your testimony.

Kaimi Kaupiko – Aloha mai kākou. I hope you can hear me and see me or hear me. Before I share a few of our community concerns for Miloli'i. I am so thankful to you Uncle for working with our community and advocating for the needs of our fishing village for all these years you have been a good friends to my father, to the late Senator

Gil Kahele and you have done so much. So I just wanted to mahalo as this is your last meeting. So thank you so much.

I also wanted to mahalo the other presenters. I want to go to Waipi'o and volunteer. You know, Janice and thank you for sending care packages to our resilient hub for keiki in Miloli'i. And my good friend Pua in Kailapa and Kristin, I am a member of the Native Hawaiian Chamber of Commerce, so I was very impressed by the presentation. Because now I can plug in. I just wanted to share I know last year I gave a presentation to the Trustees in Pāhala regarding Miloli'i. Regarding OHA to recognize and to help us with our lease issues. And I just wanted to thank CEO Sylvia who took over from the prior CEO and is continuing to have conversations with our situation and I did reach out to your staff Trustee Lindsey to see what can happen between the Department of Land and Natural Resources and OHA regarding the leases that have been increased.

I will continue to have that conversation with them. I just wanted to talk about two things tonight. One is this renovation for our park. It's been a really interesting conversation with the park and recreation and I have the Environmental Assessment Draft the Park and Recreation to the OEC. We've been having some communication breakdowns with that because a lot of the community is not truly onboard with this \$2.1 million renovation. That's going to happen for our park. Miloli'i is a very unique place and all of us continue to do traditional practices in fishing. So I would like to hope that the Trustees and the CEO can help us mitigate. The comment period ends on November 9th and a lot of our kupuna need help. I did reach out to Senator Kahele to help us to draft the comments because they want to push this package forward and I believe it will cause a lot of upheaval in our community. So I wanted to share that with the Board as one of our community concerns. They had two meetings and it wasn't, they listened to some of our concerns, but most of it was still, we weren't really supportive of the upgrades and the changes for ADA accessibility and changing the park landscape. We have our own reservations on what we think they want to do, but we want them to honor the traditions and the cultural significance of Miloli'i. So I wanted to reach out to OHA in regards to this proposal that they submitted to the OEC to get approved. We're hoping that you can help us before the comment period ends and they just rubber stamp this project forward.

The second concern I wanted to talk about is that we are currently submitted letter of inquiry to the Department of Land and Natural Resources in regards to our CBSFA which is our community-based subsistence fishing area. We are going to begin our outreach throughout the community throughout the State and we would love to present to OHA. It's about an hour presentation going over everything about proposal. We have worked five years to get the community to support us and now it's our turn to now take our hui out and this is a very critical time for us to have this specific support. Because it is who we are as a community that fish with traditional practices that has been us for so many years. So I just wanted to share those two main concerns with the through this community concern period for OHA. I'm hoping that we can continue that conversation with you and with whoever or the CEO. So I just wanted to share other things but I have emailed your staff Trustees so I just wanted to share that right now. Thank you for making this time for us, Mahalo.

Chair Robert K. Lindsey – Thank you Kaimi. Please know that although I am pau on November 3rd, I will be sure to pass on to whoever my successor is that this issue that you and others down in Miloli'i have for that lease arrangement with the Department of Land and Natural Resources. So good seeing you please send my aloha to your dad and take care.

Kaimi Kaupiko – I will thank you so much. Mahalo everyone. Thank you.

Dayna Pa - Chair Lindsey the next speaker is Kama Hopkins.

Chair Robert K. Lindsey – Aloha Kama.

Kama Hopkins – Aloha Chair and Trustees. My name is Kama Hopkins and this evening I am sharing a congratulatory certificate on behalf of the Hawai'i Island Legislative Caucus of the Hawaii State Legislature, and it reads:

The Hawaii State Legislature hereby presents this certificate to recognize and honor Robert K. Lindsey, Jr. for his distinguished service to all the people of the State of Hawaii and the Native Hawaiians

WHEREAS, ROBERT K. LINDSEY, JR., will be retiring from the Board of Trustees of the Office of Hawaiian Affairs (OHA) after 13 years of distinguished service; and

WHEREAS, ROBERT K. LINDSEY, JR. held numerous leadership roles in OHA since becoming a trustee in 2007, and is renowned for his integrity, respectful demeanor, and fair-mindedness; he worked collaboratively to develop solutions to challenging issues, bringing people with different viewpoints together to find common ground and fulfill OHA's mandate; and

WHEREAS, in addition to his outstanding service on behalf of OHA, ROBERT K. LINDSEY, JR., was a social worker in family court, National Park Service park ranger, Government Relations Officer and Land Assets Division Director at Kamehameha Schools; and

WHEREAS, as a member of the Hawai'i Island Caucus, ROBERT K. LINDSEY, JR.'s experience as a former State House Representative was valued by legislators as they collaborated on securing funding for Hawai'i Island and worked on legislation important to OHA beneficiaries; and

WHEREAS, over the years, ROBERT K. LINDSEY, JR., has developed strong business and community partnerships and contributed to many other community organizations, including the West Hawai'i Mediation Center, Kanu o Ka 'Āina New Century Public Charter School, The Kohala Center, West Hawai'i Mediation Center, Council for Native Hawaiian Advancement, Queen's Health Systems, and the North Hawai'i Community Hospital; and

WHEREAS, ROBERT K. LINDSEY, JR.'s strong relationships and experiences were instrumental in projects such as funding a cafeteria for Keaukaha Elementary School, implementing the Veteran-to-Farmer program; he also worked to provide additional support for Hawaiian focused charter schools, emergency funding for OHA beneficiaries impacted by volcanic lava flows, robotics and STEM programs as well as financial support for students pursuing higher education; now, therefore,

The Thirtieth Legislature of the State of Hawai'i hereby recognizes and honors ROBERT K. LINDSEY, JR., for his exemplary contributions on behalf of Native Hawaiians and all of the people of Hawai'i, and extends to him and his family its warmest aloha and best wishes for success in all future endeavors.

Signed the 30th Legislature; Representative Mark Nakashima, Representative Chris Todd, Representative Richard H.K. Onishi, Representative Joy A. San Buenaventura, Representative Scott K. Saiki, Speaker of the House, Representative Richard P. Creagan, Representative Nicole E. Lowen, Representative David A. Tarnas, Brian L. Takeshita, House Chief Clerk, Senator Kai Kahele, Senator Russell E. Ruderman, Ronald D. Kouchi, President of the Senate, Senator Dru Kanuha, Senator Lorraine R. Inouye and Carol Taniguchi, Senate Chief Clerk.

Mahalo Chair for the opportunity to share these comments from the Hawai'i Island Legislative Caucus. Aloha.

Chair Robert Lindsey – Mahalo Kama.

Dayna Pa – Our last speaker is Dawn Rego-Yee.

Chair Robert Lindsey – Dawn mahalo for joining us this evening.

7:31 pm Trustee John Waihe'e IV leaves the meeting.

Dawn Rego-Yee – Aloha Chair and Trustees. My name is Dawn Rego-Yee I am a Hawai‘i Island resident and I was born and raised in Hilo. I am a mother, wife, a daughter, a social worker, a cultural practitioner and an activist. I mahalo all of you for this opportunity to provide community testimony on mental health and trauma informed care. I come to you today as a trauma informed care instructor here on Hawai‘i Island with Ke Alo Hoaka or Kaha. Our organization was created and founded by Danny Goya with the mission to assist public, private and philanthropic sectors to build, maintain and restore healthy, resilient and thriving communities in Hawai‘i. We strive to support communities through our unique two lens approach of blending western science and research and traditional Native Hawaiian and other indigenous knowledge. In partnership with Vibrant Hawai‘i we have received funds from the County of Hawai‘i CARES grant to bring community based trainings and trauma informed care to Hawai‘i island. Through this grant two Hawai‘i islander instructors have been trained by Danny to bring this ‘ike on island. We are currently training a cohort of 7 community based trainers in our community of practice to deliver this training throughout Hawai‘i island.

Trauma is a physical or emotional harmful event or a series of events with lasting affects on our mental, physical, social, emotional or spiritual well-being. Childhood experiences are traumatic events that occur in childhood like abuse, neglect, violence, mental health in the home, incarceration or a loss of a parent in a home. This is common and according to the CDC 61% of surveyed adults report at least one ACE and nearly one in six report four or more ACEs. Even as these numbers are high they also increase as you look at poor, communities of color and other disadvantaged populations. ACEs are associated with a host of lasting negative effects on health and well-being, including sexual transmitted infections, teen pregnancy, alcoholism, and alcohol abuse, cancer, diabetes, heart disease and suicide.

A few statistics for you. Compared to the those with no ACEs children aged 3 to 5 or two plus ACEs are four times more likely to have social and emotional challenge that can impact their learning. Students with three or more ACEs, are 2.5 times more likely to fail a grade. In our communities here on Hawai‘i also deal with trauma that isn’t measured through the ACE study. We also deal with cultural and historical trauma and feel this like the overthrow of the Hawaiian Kingdom and the banning of ‘Ōlelo Hawai‘i. We also feel this through ‘āina trauma as our connection to land is a literal ohana relation. While ACEs and trauma may be prevalent in our community these are not our destiny.

When we are aware we can put supports into place as trauma is affected by care giver and community response. What’s predictable is preventable. When we are able to recognize and see these traumas we are able to put on a new trauma responsive world view. Instead of reacting we are able to put on a lens of responding. One of less judgement and more aloha. We have been in conversations with Shane, Kamaile and Celia in the East and West Hawai‘i OHA offices. To bring these trauma informed care trainings to your beneficiaries on Hawai‘i Island. We are exploring offering these sessions as a series of trainings within your I Mana Ka Lāhui workshops. We are incredibly excited about this opportunity to bring this mana to your beneficiaries. We are interested and excited about the potential for collaboration and to develop a relationship between OHA and KAHA as a catalyst for health and well-being in our communities.

In closing I will leave you with this ‘ōlelo no‘eau, He ‘a‘ali‘i ku makani mai au, ‘a‘ohe makani nana e kula‘i, I am the wind resistant ‘a‘ali‘i no gale can push me over. Let this be a reminder that our lāhui like the ‘a‘ali‘i is able to adapt to difficult and challenging environments. It can withstand the strongest winds, the harshest environment, is flexible, responsive and changes. Even when we are faced with trauma we have always been incredibly resourceful. We look forward to this opportunity to support our communities’ mental health and well-being. Mahalo nui.

Chair Robert Lindsey – Thank you so much for your testimony. Any more folks signed up Dayna.

Dayna Pa – Chair Lindsey that was the last person who registered to speak under community concerns.

IX. ANNOUNCEMENTS/FYI

Chair Robert Lindsey – I'd like to move on with just one announcement. The Board will hold its next virtual meeting on Thursday, October 29 at 9:30 am.

X. ADJOURNMENT

Chair Robert Lindsey - Thanks so much everyone. I think we are pau with our Hawai'i Island community meeting. I would like to entertain a motion to adjourn.

Trustee Carmen Hulu Lindsey moves to adjourn.

Trustee Kalei Akaka seconds the motion.

Chair Robert Lindsey – It has been moved Trustee Carmen Hulu Lindsey and seconded by Trustee Kalei Akaka to adjourn the meeting. Roll call vote.

Trustee Carmen Hulu Lindsey moves to adjourn. Trustee Kalei Akaka seconds the motion.						
TRUSTEE	1	2	'AE (YES)	A'OLE (NO)	KANALUA (ABSTAIN)	EXCUSED
TRUSTEE LEINA'ALA AHU ISA			X			
TRUSTEE DAN AHUNA			X			
TRUSTEE KALEI AKAKA		x	X			
TRUSTEE KELI'I AKINA			X			
TRUSTEE CARMEN HULU LINDSEY	x		X			
TRUSTEE ROBERT LINDSEY			X			
TRUSTEE JOHN WAIHE'E						X
TRUSTEE COLETTE MACHADO			X			
TRUSTEE BRENDON KALEI'ĀINA LEE			X			
TOTAL VOTE COUNT			8			1
MOTION: [] UNANIMOUS [x] PASSED [] DEFERRED [] FAILED Motion passes with eight (8) yes votes and one (1) excused vote.						

The meeting was adjourned at 7:43 pm.

Respectfully submitted,

Dayna Pa, Board Secretary

Signature not available

Colette Y. Machado, Chairperson
Board of Trustees

As approved by the Board of Trustees on _____ and signed by the Vice Chairperson at the time of the meeting:

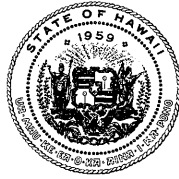
Brendon Kalei‘āina Lee, Vice Chairperson
Board of Trustees

Attachments:

1. Emailed Testimony from DHHL in support of BOT #20-08
2. Emailed Testimony from Jeff Gilbreath Hawai'i County Rent and Mortgage Assistance
3. PowerPoint presentation from Pohāhā I Ka Lani
4. Powerpoint presentation from Kailapa Homestead, Kō Ā Kai
5. Powerpoint presentation from Native Hawaiian Chamber of Commerce, Hui ‘Oihana

DAVID Y. IGE
GOVERNOR
STATE OF HAWAII

JOSH GREEN
LT. GOVERNOR
STATE OF HAWAII



WILLIAM J. AILA, JR.
CHAIRMAN
HAWAIIAN HOMES COMMISSION

TYLER I. GOMES
DEPUTY TO THE CHAIRMAN

STATE OF HAWAII
DEPARTMENT OF HAWAIIAN HOME LANDS

P. O. BOX 1879
HONOLULU, HAWAII 96805

October 26, 2020

TESTIMONY OF WILLIAM J. AILA, JR., CHAIRMAN, HAWAIIAN HOMES
COMMISSION IN SUPPORT OF BOT #20-08 HONORING OHA HAWAII ISLAND
TRUSTEE, ROBERT K. LINDSEY, JR.

Aloha, Chairperson Machado and Trustees of the Office of Hawaiian Affairs. I submit this testimony in strong support of BOT #20-08, a Resolution honoring the contributions of Hawaii Island Trustee Robert K. Lindsey, Jr.

Trustee Lindsey is a long-time resident of Waimea, of the Kipuupuu rain for which his ancestors were made famous as warriors of Kamehameha I. He has served with distinction the native Hawaiian community of Moku O Keawe, using wisdom and diplomacy to gather information and make decisions that have benefited OHA beneficiaries.

An OHA Trustee since 2007, Trustee Lindsey has been an advocate for careful management of the land and the natural resources found across the pae aina. He has sat through many community meetings, listening, and learning to understand what his constituents considered important. He has met with elected officials from the county, state, and federal government, providing sound recommendations on public policy, economic disparities, and social issues facing native Hawaiians.

On behalf of the Hawaiian Homes Commission and the staff of the Department of Hawaiian Home Lands, I would like to extend our collective appreciation, admiration, and aloha to Trustee Lindsey as he celebrates his final OHA board meeting as a sitting Trustee.

Me ke mahalo nui,

William J. Aila, Jr., Chairman

Dayna Pa

From: Jeff Gilbreath <jeff@hawaiiancommunity.net>
Sent: Tuesday, October 27, 2020 12:55 PM
To: BOT Meetings
Subject: VII. Community Concerns: Hawaiian Community Assets/Hawaii Community Lending - Hawaii County Rent and Mortgage Assistance Program

Importance: High

Aloha Board of Trustees,

I am writing on behalf of Hawaiian Community Assets and Hawaii Community Lending to share under the BOT's VII. Community Concerns about the Hawaii County Rent and Mortgage Assistance Program:
<https://sites.google.com/view/hawaiaicountyrmap>.

Our organization received a CARES Act grant for \$8.25M from the County of Hawaii to administer the program in partnership with 5 other on-island nonprofits. Since August 17th, the program has disbursed \$4.6M in rent and mortgage assistance to individuals who have lost income or work hours due to COVID.

Our organization is a member of the State Legislature's COVID Housing Working Group and through this participation, we have shared best practices we have identified as compared to other CARES Act funded rent and mortgage assistance grant programs.

The best practices we have identified and shared with other assistance program contractors include the following:

- **Received 50% of grant funds upfront vs reimbursement.** HCA/HCL received \$4.25M of the \$8.5M at contract signing and those funds were disbursed equally to the 6 nonprofits so we could all staff up, pay for program infrastructure, and have funds ready to disburse. There has never been an instance of funds running out or our partners not have the funds necessary to stay staffed up and effective.
- **Use data for transparency, to keep program accountable and identify inequities.** For example, our data dashboard on the website show the majority of applications and those approved are Native Hawaiians. At the same time, we have more renters than homeowners applying, but fewer renters approved than homeowners. When analyzed, we determined the discrepancy was due to private landlords being unwilling to sign a W9 to pay taxes on the
- **Nonprofit-led public-private partnership.** HCA/HCL received the contract from the County and subcontracted 5 other nonprofits with experience administering emergency assistance. We are all working together to accept a common application, process applications, and payout funds. We all have different data systems and upload our data into a shared database to check for duplicate applications and total \$\$ out the door. This has allowed us to mobilize 40 full-time staff collectively at nonprofits with emergency assistance experience and use their back offices to deploy the funds so 6 nonprofits, not 1, are disbursing funds. HCA/HCL monitors subcontractors through quality control reviews of applicant files and nonprofit finances, which keeps the County and public officials out of the program that would otherwise "bottle neck" applications and prevent us from disbursing funds efficiently.
- **Regular meetings to co-create and improve program.** HCA/HCL meet with the nonprofit partners and the County weekly to review the program data, analyze it, and suggest changes to the program so it can better address the needs of community. For example, most recently, our data showed a greater number of female head of households are applying, but fewer are getting approved when compared to male head of households. After we analyzed the data, we noticed that there were a number of female head of households that are single-parent households and they had to quit work due to COVID so they could provide childcare for their keiki. The County opened the eligibility for individuals in this situation and 20 female, single-parent head of households will now get up to \$380k in assistance through the program.

Mahalo for your time and consideration. Please contact me directly should you have any questions or would like to discuss further.

Jeff Gilbreath *he/him/his* ([what's this?](#))

Interim Executive Director
Hawaiian Community Assets
200 N. Vineyard Blvd. #B140
Honolulu, HI 96817
Direct: 808-587-7653
Main: 808-587-7886
Toll Free: 866-400-1116
TTY: 877-477-5990
Fax Direct: 808-628-6879
Web: www.hawaiiancommunity.net

 Please consider the environment before printing this email

The information transmitted is intended only for the person or entity to which it is addressed and may contain confidential, proprietary and or privileged material. Any review, retransmission, dissemination or other use of, or taking of any action in reliance upon this information by persons or entities other than the intended recipient is prohibited. If you received this email in error, please contact the sender and delete the material from all computers.

Pōhāhā I Ka Lani

Pohahaikalani.com

A Hawaiian 501c3 non-profit



MISSION STATEMENT



TO REVITALIZE
AND ADVANCE
INDIGENOUS
HAWAIIAN
CULTURE

Pōhāhā I Ka Lani
Pohahaikalani.com

Cultural Education & Land Stewardship



- Founded in 2001 by Kūlia Kauhi Tolentino-Potter & her dad James Tolentino Jr
- Became a nonprofit in 2009
- Host local, national, and international groups year round.
- Over 2,000 participants yearly

Pōhāhā I Ka Lani

Pohahaikalani.com

Mālama Nāpo‘opo‘o – Ancient Village Site

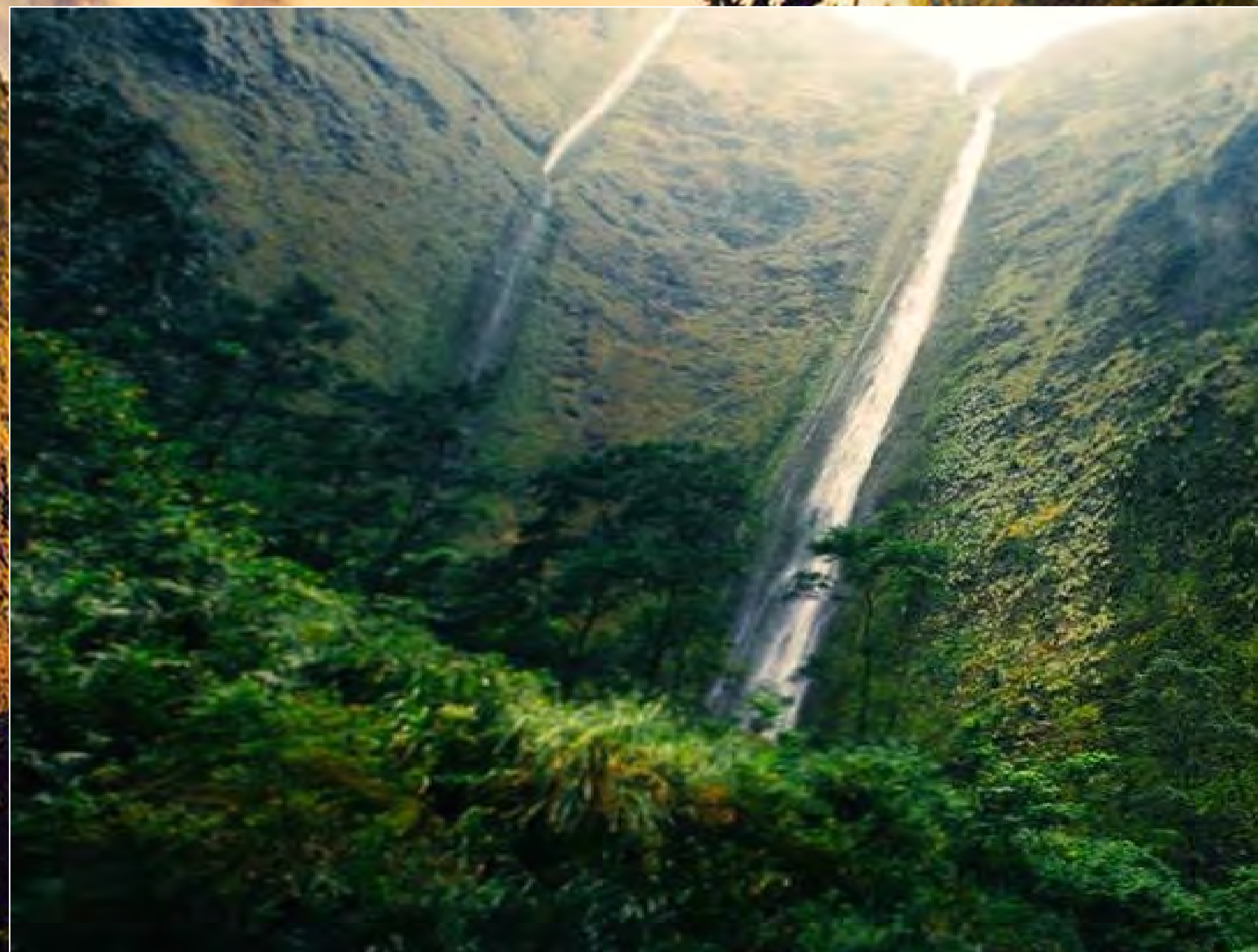


- Ancient lo‘i restoration (800-1200AD)
- Steward village area of Nāpo‘opo‘o in Waipi‘o
- Promoting traditional practices & knowledge.

Pōhāhā I Ka Lani

Pohahaikalani.com

Mālama Hi‘ilawe – sacred waters



- Protecting sacred waterfall of Hi‘ilawe
- Education of cultural history, protocol, safety, legal issues and kuleana.

Pōhāhā I Ka Lani

Pohahaikalani.com

Reopening Lo‘i at Nāpo‘opo‘o



Pōhāhā I Ka Lani
Pohahaikalani.com

Clearing Areas By Hand



Pōhāhā I Ka Lani
Pohahaikalani.com

Kūpuna Left So Much....



Pōhāhā I Ka Lani

Pohahaikalani.com

Highschool and College Groups



Pōhāhā I Ka Lani
Pohahaikalani.com

Lots of Help From College Groups



Pōhāhā I Ka Lani
Pohahaikalani.com

Cleaning Up Ti House Area



Pōhāhā I Ka Lani
Pohahaikalani.com

Recent Parcels Received



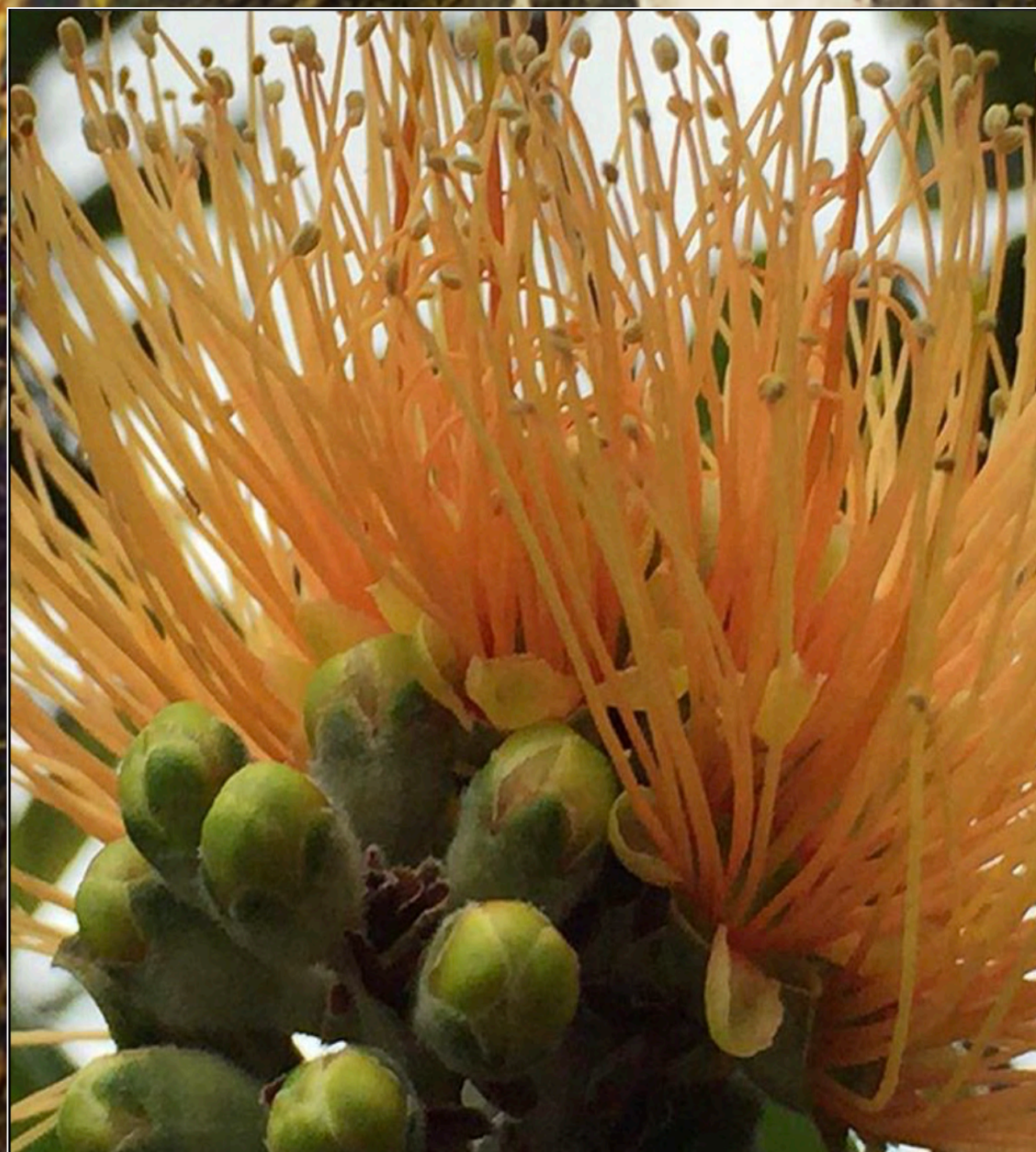
Pōhāhā I Ka Lani
Pohahaikalani.com

Cleaning & Planting the New Parcel



Pōhāhā I Ka Lani
Pohahaikalani.com

Planting 'Ōhi'a



Pōhāhā I Ka Lani
Pohahaikalani.com

Koa'ekea - Waipi'o Lookout



- Cultural & community space.
- Hawai'i County Public Access, Open Space, & Natural Resource Conservation (PONC)

Beginning Stages at Koa'ekea



Pōhāhā I Ka Lani
Pohahaikalani.com

Trash Removed from Koa'ekea



Pōhāhā I Ka Lani
Pohahaikalani.com

13 Abandoned Vehicles Removed



Pōhāhā I Ka Lani
Pohahaikalani.com

Over 30 Trailer Loads of Trash



Pōhāhā I Ka Lani
Pohahaikalani.com

Gardens Replaced Invasives & Trash



Pōhāhā I Ka Lani
Pohahaikalani.com

Kālai Papa & Pōhaku Ku‘i ‘Ai



Pōhāhā I Ka Lani
Pohahaikalani.com

Mo'olelo & Art Workshops



Pōhāhā I Ka Lani
Pohahaikalani.com

Mahiki & Lalakea (Waipi'o Valley Rimlands)



- Protection of remaining native ecosystems
- Guided cultural hikes & voluntourism
- Community stewardship membership program

Kālai Papa Ku‘i ‘Ai at Lalakea



Pōhāhā I Ka Lani
Pohahaikalani.com

Removing Invasives at Waiholoa



Pōhāhā I Ka Lani
Pohahaikalani.com

Vetiver Planted at Kilohana



Pōhāhā I Ka Lani

Pohahaikalani.com

Our Response To Covid-19



Pōhāhā I Ka Lani
Pohahaikalani.com

How Can We Help?



- Provide Healthy Organic Food From Our Farm
- Provide Traditional Lā‘au
- Provide Plants/Trees/Cuttings/Seeds
- Provide Guidance To Families & Farmers
- Expanding Our Gardens & Food Resources

Pōhāhā I Ka Lani

Pohahaikalani.com

Huli & Mamaki



Pōhāhā I Ka Lani
Pohahaikalani.com

Part of Harvesting Team AKA Our Daughters



Pōhāhā I Ka Lani
Pohahaikalani.com

Food With Lots of Health Benefits



Pōhāhā I Ka Lani
Pohahaikalani.com

Ulu, Kalo 'Uala Sourdough Breads



Pōhāhā I Ka Lanī
Pohahaikalani.com

‘Ai Pono



Pōhāhā I Ka Lani
Pohahaikalani.com

Continuing With Taking Care of Our Kuleana



Koa'ekea



Lalakea



Mahiki



Nāpo‘opo‘o



Pohahaikalani.com



pohahaikalani@gmail.com

facebook



Instagram

Pōhāhā I Ka Lani

Pohahaikalani.com

A photograph of two children on a rocky beach. One child, wearing a dark shirt and patterned shorts, is holding a smooth, dark, rounded rock. Another child's hand is reaching out towards the rock. The background is filled with many similar dark rocks.

KŌ Ā KAI

Kawaihae Komohana
Kohala, Hawai'i

Kailapa Community Association
'Ikuā
October 2020

Kailapa Hawaiian Homestead

ahupua'a: Kawaihae Komohana

moku: Kohala

mokupuni: Hawai'i

residential
homesteads: 190

acreage: 10,153

non-profit: Kailapa Community Association
2010

RHCI: 'Ehu'ehu i ka Pono Resiliency Plan
2019



wahi a kahiko...

Na makani paio lua o Kawaihae.

‘Ōlelo No‘eau 2258

Ka ua nāulu o Kawaihae.

‘Ōlelo No‘eau 1588

Kawaihae i ke kai hāwanawana.

‘Ōlelo No‘eau 1647

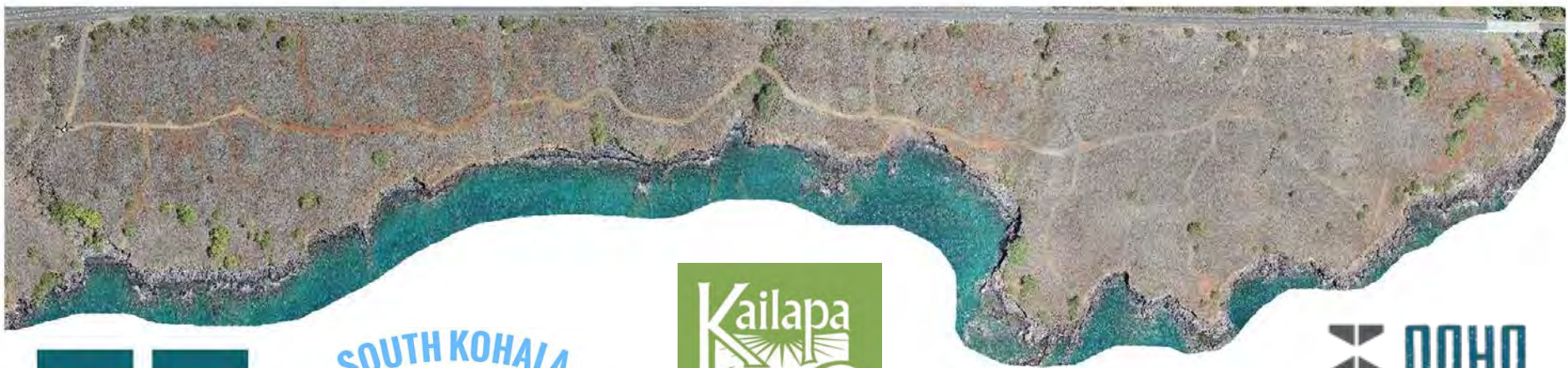
Pua ka lehua.

‘Ōlelo No‘eau 2695



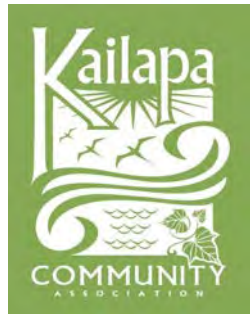
KŌ Ā KAI

shore dweller
belonging to the shore or sea



HAWAIIAN
HOME LANDS

HAWAIIAN HOMES COMMISSION
DEPARTMENT OF HAWAIIAN HOME LANDS



ATHERTON FAMILY
FOUNDATION



NĀ PAHU HOPU Goals & Objectives

1. Resource Stewardship
2. Subsistence Living
3. Thriving Community

NĀ KULEANA Obligations & Priorities

- Access
- Restoration
- Stewardship

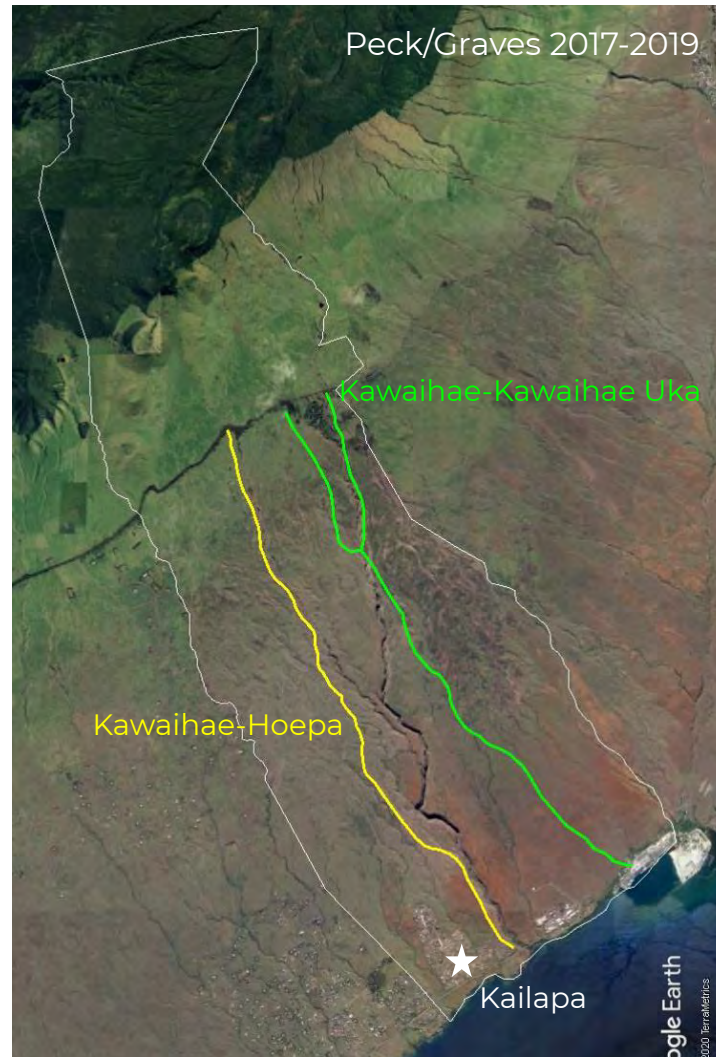


HO'ŌLA











'AHA'AWA

An aerial photograph of a rugged coastline. The top left shows deep turquoise water with white foam from breaking waves crashing against dark, jagged rocks. A narrow, light-colored sandy beach runs along the top right. Below the beach, the terrain is a mix of dark, craggy rock formations and patches of green, scrubby vegetation. The overall scene is a high-contrast natural landscape.

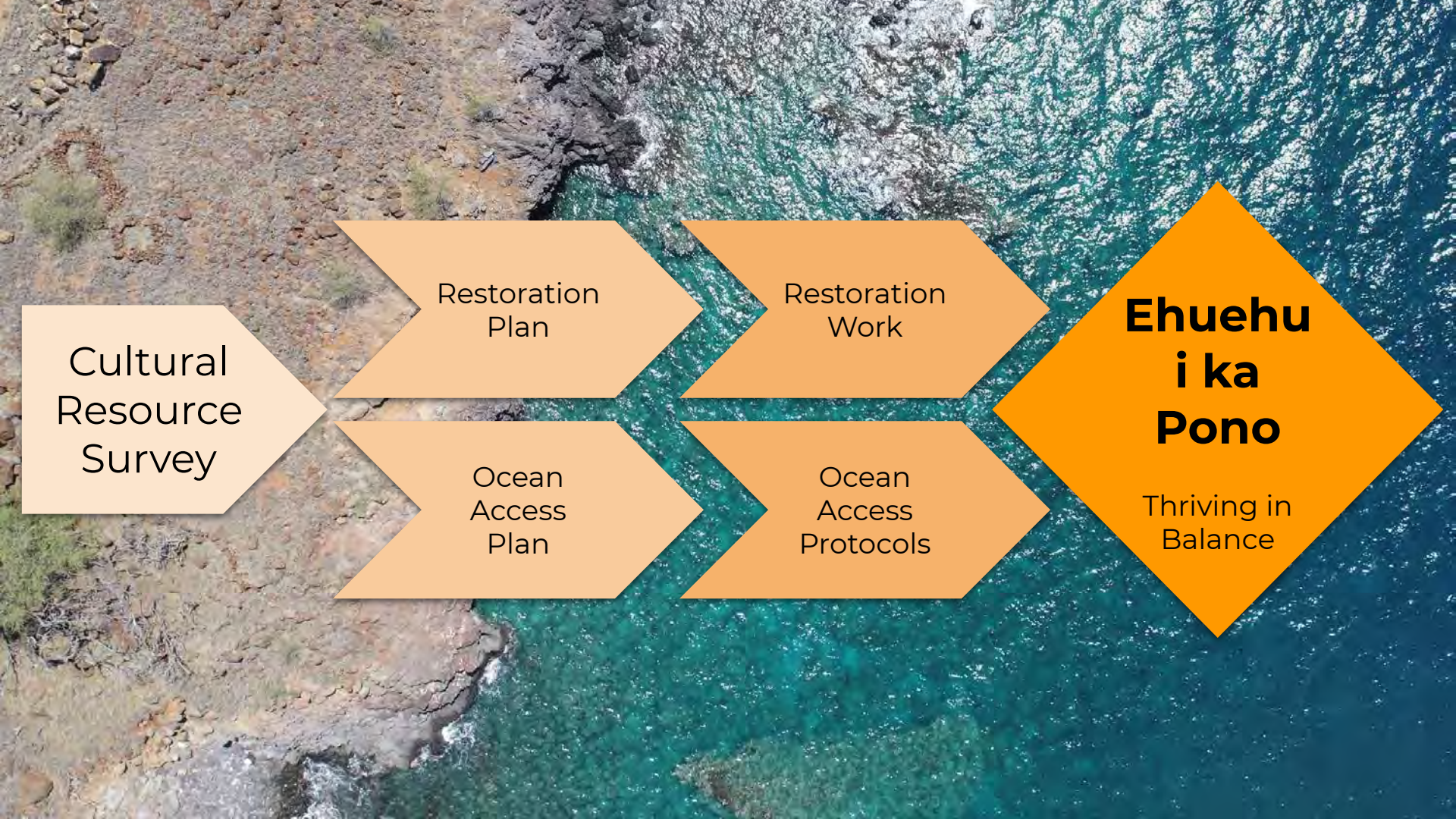
Cultural Resources Survey

Phase 1: Geospatial & Remote Sensing

Phase 2: Pedestrian Recon Survey

Phase 3: Restoration Plan

Phase 4: Community Presentation



```
graph LR; A[Cultural Resource Survey] --> B[Restoration Plan]; A --> C[Ocean Access Plan]; B --> D[Restoration Work]; C --> E[Ocean Access Protocols]; D --> F[Ehuehu i ka Pono  
Thriving in Balance]; E --> F
```

Cultural
Resource
Survey

Restoration
Plan

Restoration
Work

Ocean
Access
Plan

Ocean
Access
Protocols

**Ehuehu
i ka
Pono**

Thriving in
Balance

A group of seven children are standing on a grassy hill. One child on the left is shirtless and wearing blue shorts, with one arm raised. The other six children are dressed in casual summer clothes like t-shirts and shorts. They are standing near a wire fence that has some tall green plants growing through it. The background shows a vast landscape of dry, yellowish-brown grass under a heavy, grey sky. A vibrant rainbow is visible, arching from the right side of the frame towards the center. The overall mood is one of hope and resilience.

**HE ALI' I KA 'ĀINA
HE KAUWA KE KANAKA**



Hawai'i Island Native Hawaiian Chamber of Commerce

OHA BOT Meeting

October 27, 2020





Ala Nu'ukia (Mission)

E ho'oiikaika 'ia ke kaiāulu me nā pā'oihana 'ōiwi Hawai'i ma o ka ho'omohala waiwai kumu i ka 'ōlelo, ka mo'omeheu, a me ke aloha.

To strengthen the Native Hawaiian community and businesses by supporting a thriving economy rooted in language, culture, and aloha.



Support a Sustainable Island Community

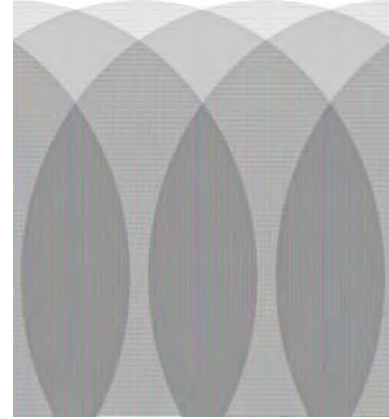
Aloha+ CHALLENGE

‘Āina Aloha
ECONOMIC FUTURES

He mana ko ka leo pualu.



NATIVE HAWAIIAN
CHAMBER OF
COMMERCE



There is power in a collective voice.

Ho‘okahua Waiwai

Hawaiians will achieve economic self-sufficiency with leadership that supports entrepreneurship, embraces adaptation, encourages new industries and builds a solid foundation for sustained growth.



Mahalo!

**STATE OF HAWAII
OFFICE OF HAWAIIAN AFFAIRS
Virtual Meeting via Zoom Webinar**

Due to the threat of COVID-19, Governor Ige issued the most recent Emergency Fourteen Supplementary Proclamation dated October 13, 2020 that suspends parts of Hawai'i Revised Statutes Chapter 92, Public Agency Meetings and Records to, among other things, enable boards to conduct business without any board members or members of the public physically present at the same location.

The OHA Board of Trustees will hold virtual meetings until further notice. The virtual meetings can be viewed and observed via livestream on OHA's website at www.oha.org/livestream or listen by phone: (213) 338-8477, Webinar ID: 912-8879-0613

**Minutes of the Office of Hawaiian Affairs Board of Trustees &
Island of Maui Community Meeting
Thursday, October 29, 2020
9:30 am**

ATTENDANCE:

TRUSTEE COLETTE MACHADO
TRUSTEE BRENDON KALEI'ĀINA LEE
TRUSTEE LEINA'ALA AHU ISA
TRUSTEE DAN AHUNA
TRUSTEE KALEI AKAKA
TRUSTEE W. KELI'I AKINA
TRUSTEE CARMEN HULU LINDSEY
TRUSTEE ROBERT K. LINDSEY
TRUSTEE JOHN WAIHE'E IV

ROBERT KLEIN, BOARD COUNSEL

ADMINISTRATION STAFF:

SYLVIA HUSSEY, CEO
RAINA GUSHIKEN, CC
STERING WONG, ICDO, ICA
EVERETT OHTA, CC
MEHANA HIND, CE
KEVIN CHAK, IT
MARC BANTOLINA, IT
RAMONA HINCK, CFO

BOT STAFF:

CAROL HO'OMANAWANUI
LOPAKA BAPTISTE
LAURENE KALUAU-KEALOHA
DAYNA PA

GUESTS:

LITA BLANKENFELD
MYRON THOMPSON
NAINOA THOMPSON
BRUCE BLANKENFELD
TIA BLANKENFELD BROWN./
KEKUEWA KIKILOI
AULANI WHILHELM
CHRIS CRAMER
RICHARD PEZZULO

I. CALL TO ORDER

Chair Colette Machado Calls the Board of Trustees and Island of Maui Community meeting to order at 9:32 am. A roll call is taken to identify the Trustees that are participating; Trustees Ahu Isa, Ahuna, Akaka, Akina, Lee, Trustee Carmen Hulu Lindsey, Trustee Robert Lindsey, Waihee and Machado constituting a quorum of nine Trustees.

Thank you members. Let me begin by reading a quick announcement here. Welcome to the OHA Board of Trustees and Maui Island meeting. As a reminder, please mute your mic until you need to speak to eliminate any background noise, which makes it difficult to hear and affects the quality of sound on the live stream. Trustees and the OHA CEO who are joining by video conference, please enable your camera if you are able to do so. All other OHA staff please enable your camera when you need to address the board. When you would like to speak unmute

your mic and address the Chair to be recognized. When the Chair recognizes you proceed to speak. Please mute your mic when you are done. At the prompting of the Chair the Board Secretary will do a roll call to determine quorum. If you are disconnected we will pause the meeting for one minute and wait for you to log back on. After one minute we will proceed with the meeting provided we have a quorum. If you need to leave the meeting, please inform the Chair by announcing you are leaving the meeting.

We are recording today's meeting for the sole purpose of producing written meeting minutes, which will become the official record of this meeting. Joining the Trustees today is Robert G. Klein, Board Counsel, CEO Sylvia Hussey, along with Carol, Dayna, Lōpaka, Laurene, Kevin and Marc as support staff. I will call on Ka Pouhana Sylvia to announce the names of the administrative that is present.

Sylvia Hussey, CEO - Thank you Chair. We have Sterling Wong interim Chief Operating Office, Ramona Hinck, Chief Financial Office, Senior Legal Counsel Raina Gushiken, Assistant Legal Counsel Everett Ohta, and Community Engagement Director Mehana Hind. That's administration staff represented here Chair.

Trustee Carmen Hulu Lindsey – Madam Chair.

Chair Colette Machado – Trustee Carmen Hulu Lindsey.

Trustee Carmen Hulu Lindsey - Just a little correction this is not the Maui island meeting.

Trustee Brendon Kalei'āina Lee - Yes it is.

Chair Colette Machado - Carol, do you want to clarify why we were calling it the Maui meeting.

Carol Hoomanawanui – Yes, good morning Chair. Maybe I should have the Board Counsel explain. He advised us that the Community meeting that was held for Maui lacked any board business and so to actually comply with the with the term “meeting”, we had to actually have board business. But I'll let the Board Counsel Robert G. Klein explain.

Robert G. Klein, Board Counsel - Thank you Chair and thank you Trustee Hulu, the law chapter 10-8 requires the board to have a meeting on every island every year. The meeting that we had for Maui was a community meeting. We did not have any board business on that agenda. So because we didn't have any meeting, it's not really a sunshine law meeting, and that's what's required to comply with the one meeting, per island per year. We had to redo the Maui meeting with business items on the agenda to comply with the 10-8 requirement that you folks do one island meeting every year, so this one has board business, it qualifies as the Maui meeting, sort of a make-up and that's why we had to do it. But thank you for pointing that out. You know with these virtual meetings it's hard to keep track of how we keeping track of our legal responsibilities, but unfortunately, that's why we're doing this meeting today. Thank you for your question. Thank you, Chair.

Trustee Carmen Hulu Lindsey - Thank you, Judge.

II. APPROVAL OF MINUTES

A. October 6, 2020

B. October 8, 2020

Chair Colette Machado - Let's proceed to II. Approval of minutes. I wanted to separate out October 22nd for some corrections, so the chair would like to entertain a motion for October 6 and October 8 at this time.

Trustee Carmen Hulu Lindsey moves to approve the Board of Trustees minutes of October 6, 2020 and October 8, 2020.

Trustee Brendon Kalei‘āina Lee seconds the motion.

Chair Colette Machado – It has been moved in second for the minutes of October 6 and 8. Any discussion? Hearing none, let’s have a roll call vote, Madam Secretary.

Trustee Carmen Hulu Lindsey moves to approve the Board of Trustees minutes of October 6, 2020 and October 8, 2020. Trustee Brendon Kalei‘āina Lee seconds the motion.						
TRUSTEE	1	2	‘AE (YES)	A‘OLE (NO)	KANALUA (ABSTAIN)	EXCUSED
TRUSTEE LEINA‘ALA AHU ISA			X			
TRUSTEE DAN AHUNA			x			
TRUSTEE KALEI AKAKA			X			
TRUSTEE KELI‘I AKINA			X			
TRUSTEE BRENDON KALEI‘ĀINA LEE		X	X			
TRUSTEE CARMEN HULU LINDSEY	X		X			
TRUSTEE ROBERT LINDSEY			X			
TRUSTEE JOHN WAIHE‘E			X			
TRUSTEE COLETTE MACHADO			X			
TOTAL VOTE COUNT			9			
MOTION: [x] UNANIMOUS [] PASSED [] DEFERRED [] FAILED Motion unanimously passes with nine (9) yes votes.						

C. October 22, 2020

Chair Colette Machado - Thank you members. We are now on the minutes of October 22nd, 2020. I’ll call on our secretary to address some of the corrections that will be made.

Trustee Brendon Kalei‘āina Lee - Madam Chair point of order.

Chair Colette Machado – Trustee Brendon Kalei‘āina Lee.

Trustee Brendon Kalei‘āina Lee - Nothing can be corrected until it’s in front of us.

Trustee Brendon Kalei‘āina Lee moves to approve the minutes for the October 22nd meeting.

Trustee Carmen Hulu Lindsey seconds the motion.

Chair Colette Machado - Thank you for that clarification Vice Chair. If there’s no further questions or call for the roll call Madam Secretary, please take the vote and they will go into the corrections.

Dayna Pa – The changes to the minutes are on page 5 of the October 22, 2020 meeting. The second table needs to reflect the amended motion the Trustee Waihe‘e made. We are striking out the word “both”, striking out and HR 6535 and adding only in that section.

Trustee Brendon Kalei‘āina Lee moves that we amend the minutes as so stated by the Board Secretary.

Trustee Leina‘ala Ahu Isa seconds the motion.

Chair Colette Machado – It has been moved and seconded. Roll call vote please.

Trustee Brendon Kalei'āina Lee move that we amend the minutes as so stated by the Board Secretary. Trustee Leina'ala Ahu Isa seconds the motion.						
TRUSTEE	1	2	'AE (YES)	A'OLE (NO)	KANALUA (ABSTAIN)	EXCUSED
TRUSTEE LEINA'ALA AHU ISA		x	X			
TRUSTEE DAN AHUNA			X			
TRUSTEE KALEI AKAKA			X			
TRUSTEE KELI'I AKINA			X			
TRUSTEE BRENDON KALEI'ĀINA LEE	x		X			
TRUSTEE CARMEN HULU LINDSEY			X			
TRUSTEE ROBERT LINDSEY			X			
TRUSTEE JOHN WAIHE'E			X			
TRUSTEE COLETTE MACHADO			X			
TOTAL VOTE COUNT			9			
MOTION: [x] UNANIMOUS [] PASSED [] DEFERRED [] FAILED Motion unanimously passes with nine (9) yes votes.						

Chair Colette Machado – Roll call vote on the main motion please.

Trustee Brendon Kalei'āina Lee moves to approve the minutes for the October 22nd meeting, as amended. Trustee Carmen Hulu Lindsey seconds the motion.						
TRUSTEE	1	2	'AE (YES)	A'OLE (NO)	KANALUA (ABSTAIN)	EXCUSED
TRUSTEE LEINA'ALA AHU ISA			X			
TRUSTEE DAN AHUNA			X			
TRUSTEE KALEI AKAKA			X			
TRUSTEE KELI'I AKINA			X			
TRUSTEE BRENDON KALEI'ĀINA LEE	x		X			
TRUSTEE CARMEN HULU LINDSEY		x	X			
TRUSTEE ROBERT LINDSEY			X			
TRUSTEE JOHN WAIHE'E			X			
TRUSTEE COLETTE MACHADO			X			
TOTAL VOTE COUNT			9			
MOTION: [x] UNANIMOUS [] PASSED [] DEFERRED [] FAILED Motion unanimously passes with nine (9) yes votes.						

Chair Colette Machado – Thank you members for your patience. We are now moving on to III. which is public testimony.

III. PUBLIC TESTIMONY ON ITEMS LISTED ON THE AGENDA

Chair Colette Machado – I've received two written testimony from Richard Pezzulo, Executive Director of Hi'ipaka LLC and Mona Bernardino, Chief Operating Officer of Hi'lei Aloha, LLC. So we have Mr. Pezzulo standing by with testimony, am I correct?

Dayna Pa - That's correct, Chair.

Chair Colette Machado - I'll recognize him and you can call on him, Madam Secretary.

Dayna Pa – Richard.

Chair Colette Machado – You have been recognized by the Chair. You can proceed to offer your testimony.

Richard Pezzulo - Thank you Madam Chair and aloha Trustees. I'm here this morning to testify in support of the BOT approval of the three volunteer, uncompensated managers for Hi'ilei Aloha, LLC, which would be effective January 1, 2021. These three individuals will bring a good balance of culture, business and finance expertise along with strong commitment and dedication to Hi'ilei Aloha, and eventually Hi'ipaka, LLC. All three individuals have strong community connections and are dedicated to making Hawaii a better place to live. They are proven community leaders and are actively involved in a number of cultural and conservation organizations. Besides having outstanding business, community and cultural experiences, the three individuals have a very strong connection to Hi'ipaka, LLC and Waimea Valley. Bob Leinau is a previous long-term manager of Waimea Valley and since 2012 he has been a member of our Aha Hui Advisory Group. His institutional knowledge and advice and assistance has been very valuable in helping the Valley through some difficult times. Greg Peach if you don't know his Grandfather, started the commercial Waimea Valley in the 1980s and Greg is very dedicated to the valley providing advice and assistance freely whenever called upon. His finance and Land management expertise that provides benefit to the valley. Leilani Kahoano has a strong cultural background and is a member of the Hewahewa 'ohana cause having a strong connection to the Valley. She has been active in organizing cultural groups to experience and learn about the Valley. Leilani has also helped us to secure the only land that we did not own in the valley where also, the burial site of Ka Huna Nui Hewahewa is. So as the Executive Director of the Hi'ipaka LLC, I strongly recommend BOT approval of the three individuals as Hi'ilei Aloha, LLC managers mahalo.

Dayna Pa – The next testifier is Kekuewa.

Kekuewa Kikiloi - Aloha Madam Chair and OHA Trustees. My name is Dr. Kekuewa Kikiloi, and I'm the chair of the Papahānaumokuākea Native Hawaiian Culture Working Group an informal advisory body to the Multi Agency Board that oversees the management of the Northwest Hawaiian Islands. I'm here today to express our gratitude for OHA in putting forth a resolution that honors the life and contributions of Auntie Laura Thompson. We fully support this resolution and the recognition it gives Auntie Laura for her important service to our community and homeland.

Auntie Laura dedicated a big portion of her life and career in advocating for the protection of Papahānaumokuākea of the largest conservation areas in the world. Located here in Hawai'i. She, along with other esteemed kupuna like Dr. Isabella Abbott and Uncle Buzzy Agard were some of the earliest elders in our community involved in discussions regarding the formation of the first layers of marine protection, the establishment of the Northwest West Hawaiian Islands Coral Reef Ecosystem Reserve in 2000. She served on the Reserve Advisory Council as a conservation representative for most of its existence and also was an important member of our cultural working group that helped to give recommendations and guidance on culture issues.

Auntie Laura was a role model to many of us. She helped anchor our cultural values in a really challenging time when our group was trying to establish ourselves. Whenever we encountered contentious issues, she always reminded us of the importance of kindness and grace and acting appropriate and not letting anger, resentment or pettiness get the best of us. She was always able to keep us focus and encourage us to rise above any problems or issues to try to accomplish our goals of ensuring this region is protected and our culture incorporated into how this important place is managed. The recent passing of Auntie Laura is a major loss for the white community and our Papahānaumokuākea 'ohana. This resolution is an important step to recognizing her extraordinary contributions to protecting Hawaii and making it a better place, mahalo.

Dayna Pa – Thank you Kekuewa, the next speaker is Aulani Wilhelm.

Aulani Wilhelm – Aloha Chair and to all the Trustees, and particularly aloha to Lita, Myron, Nainoa and Tia. Hope I can get through this. Mahalo for the opportunity to briefly speak in support of the proposed resolution

honoring the life and contributions of Laura Kalaukapu Low Lucas Thompson for the betterment of the people and natural and cultural resources of Hawai‘i. The resolution does a wonderful job briefly detailing her incredible life of service to her family, her community, our lāhui, and all of Hawai‘i. With her passing we have indeed lost “a compassionate leader advocate for ensuring that all of Hawai‘i’s natural resources, including Native Hawaiian knowledge and values, are protected for future generations.”

I was incredibly fortunate and blessed to have been mentored by her for nearly 25 years. Across that time we worked on many community initiatives together, namely the founding of Mālama Hawai‘i, a coalition of people and organizations across our pae‘āina that was founded upon a simple but profound vision, that “Hawai‘i be a place where the land and sea are cared for and that is healthy and safe for all people.” Aunty Laura was relentless in making sure we linked sectors together from health, economic development, conservation, and human services together recognizing that addressing problems in silos would only lead to greater disparity and a scarcity mindset.

The foundational work of Mālama Hawai‘i became the early framework for what has now become the Hawai‘i Green Growth initiative. I was also privileged that Aunty Laura agreed to serve as a founding member of the Northwestern Hawaiian Islands Coral Reef Ecosystem Reserve Advisory Council, a role which she dedicated herself to for 15 years. In that capacity she brought wisdom and experience to this fledging initiative that has since become the Papahānaumokuākea Marine National Monument and World Heritage site, globally designated as a Particularly Sensitive Sea Area under the International Maritime Organization as well, a distinction held by less than two dozen places on Earth. Her voice ensured a values based design of the Mokupāpapa Discovery Center in Hilo and the philosophy of “bringing the place to the people, not the people to the place” for our educational initiatives that have since built a thriving global community of people who have also come to love this extraordinary ancestral realm in support of our efforts.

Without a doubt, had she not taken a leadership role in bringing Native Hawaiian leaders together around the proposal to seek World Heritage designation by convening people who otherwise agreed on little together under the shade of her kiawe tree in Niu Valley, we would not have had the honor of becoming the first mixed natural/cultural seascape inscribed under the UNESCO convention. Her ‘alo he ‘alo approach to forging understanding, and then consensus, enabled this and many other pivotal agreements within our community. These are just two examples. These kinds of traits and values she grounded herself in were generously passed forward to the dozens of people she mentored including myself. She made us better by her example and by sometimes sternly, sometimes gently steering us, always guiding us with the deepest of aloha. Her deep care for ‘āina was matched only by her deep love for people. She generously invested her time and care in both. Mahalo for honoring her today with this resolution of recognition and gratitude. This recognition you bestow on her today, while in her name, is not something important to do for her – she has never needed nor would ever have sought such acknowledgement. Instead, this recognition today is really for each one of us, and for future generations – so we can hold and remember her embodiment of the deep and necessary human qualities of a true and humble leader, mentor, matriarch, mother, grandmother, and friend. The recognition is also important – particularly at a time when the world is so upside down – so we continue to have faith in each other that such human character is possible to hold within, and so we can be inspired to strive to build such character in ourselves and those around us. These are the attributes of character needed to care for our island home and each other in a way worthy of our ancestors and the future, whatever we may be facing. Mahalo nui for considering my thoughts this morning.

Dayna Pa – Thank you Aulani the next speaker and the last is Chris Cramer.

Chris Cramer - Aloha Board of Trustees. Mahalo for the opportunity to speak with you folks today, wanted to express the Maunaloa Fish Pond Heritage Center’s strong support of this resolution honoring Aunty Laura Thompson. Aunty Laura was the steersman towards a better Hawai‘i. She had great aloha for all peoples from across the Pacific and across the world. She was a uniter that opened her home to bring people together and as was stated earlier, that was something that she did so well. I remember there was an article in the 1970s that spoke about when the Tahitians came to Hawaii and 32 came to visit and Aunty Laura gave up her bed. You know, so that they could come in her home and those kinds of things didn’t matter to her she was very selfless and rooted to Niu and her home there where she was raised. Throughout her life she cared for all living things big and small.

As well as the people, her model that we learned from her was to keep it simple. And we were honored to serve with her on the board for the fish ponds at Maunalua Fish Pond Heritage Center, and Kalauha‘iha‘i Fish Pond at Kānewai Springs today are some of the testaments to her work. As well as Maunalua Bay and all the efforts to restore and bring about a change in the health of the bay as well. But her work inspired so many in the community and her legacy and values that she upheld will continue to bear fruit. So we thank you again for the opportunity to testify today and she will live on through the efforts of all these people that she inspired and her work will live. So Mahalo for that for the opportunity today.

Dayna Pa - Thank you, Chris. Madam Chair that was the last person signed up for public testimony.

Chair Colette Machado - Thank you all that took the time to offer testimony on behalf of our recognition resolution honoring Laura Thompson.

IV. RECOGNITION RESOLUTION

A. Action Item BOT #20-10: Approval of an OHA Board of Trustees’ Resolution honoring the life and contributions of Laura Kalaukapu Low Lucas Thompson for the betterment of the people and natural and cultural resources of Hawai‘i.[†]

1. Acceptance and response by the “‘ohana members of the late Laura Kalaukapu Low Lucas Thompson in connection to Action Item BOT #20-10 in honor and recognition of her life and contributions for the betterment of Hawai‘i, its people, and its natural and cultural resources.

Chair Colette Machado – Our next item is IV, and I will acknowledge Vice Chair Kalei‘āina to assist with this recognition resolution identified as action item BOT #20-10. Vice Chair Lee please proceed.

Trustee Brendon Kalei‘āina Lee moves to approve a resolution of the Office of Hawaiian Affairs honoring the life and contributions of Laura Kalaukapu Low Lucas Thompson for the betterment of the people and natural and cultural resources of Hawaii.

Trustee Robert Lindsey seconds the motion.

Chair Colette Machado - Thank you, there’s a motion that has been moved and seconded. Any further discussions?

Trustee Brendon Kalei‘āina Lee – Madam Chair.

Chair Colette Machado – Vice Chair Lee.

Trustee Brendon Kalei‘āina Lee - If I may, joining us today this morning are family members of the distinguished person from our lāhui. Joining us today on either by phone or online, is Myron Thompson, son, Nainoa Thompson son, Tia Blankenfeld Brown, granddaughter, Bruce Blankenfeld son-in-law and Lita Blankenfeld, daughter. Madam Chair, if I can move for a point of personal privilege to allow Lita to speak on behalf of her mother and her ‘ohana.

Chair Colette Machado – Please proceed.

Lita Blankenfeld - Aloha and good morning my name is Lita Blankenfeld, I’m the daughter of Laura Kalaukapu Low Lucas Thompson. I’m here with my family, my brothers, you know what you just said all this. I’m not going to say that. But I’m usually not the one who’s in this position of doing the public speaking, because I have an amazing family of speakers. But I’m honored and humbled to be here to represent those that are here with us now and those that are not here with us to receive this beautiful tribute to mom. Sorry, I know there’s a lot of thought and love and energy that went into this resolution by many folks who were close to her. And we’re so appreciative

of your kindness. And we can never thank you enough. So mahalo to all of you for being here. Mahalo to you Chairman Machado and the Trustees, and a big mahalo to all of you for caring for mom. Thank you.

Trustee Brendon Kalei‘āina Lee - Madam Chair.

Chair Colette Machado – Trustee Lee.

Trustee Brendon Kalei‘āina Lee – If I can call on administration to read off the resolution before we vote.

Chair Colette Machado - Proceed.

Trustee Brendon Kalei‘āina Lee – Sylvia.

Sylvia Hussey, CEO - Thank you Trustee Lee and Chair Machado and Trustees. Before Mehana reads the honorary resolution for us. I just wanted to thank the family for allowing us to honor such a distinguished member of our community and the resolution was written by staff members as well as with kokua from Heidi Kai Guth, who was formerly with OHA and a point of contact with Papahānaumokuākea. So there's great connections all around to the resolution. With that I'd like to ask Mehana Hind to read the resolution for us.

Mehana Hind – Mahalo Ka Pouhana. Aloha Thompson ‘ohana. Mahalo nui. *(Mehana reads the Resolution)*

**“A RESOLUTION OF THE OFFICE OF HAWAIIAN AFFAIRS
HONORING THE LIFE AND CONTRIBUTIONS
OF LAURA KALAUKAPU LOW LUCAS THOMPSON FOR THE BETTERMENT
OF THE PEOPLE AND NATURAL AND CULTURAL RESOURCES OF HAWAI‘I”**

WHEREAS, Laura Kalaukapu Low Lucas Thompson was born in May 1925 on O‘ahu, to Clorinda and Charles Lucas, and was raised within the arms of Niu Valley where she, in turn, raised her children and watched her grandchildren and great-grandchildren flourish; and

WHEREAS, Laura Thompson attended and graduated from Punahou School, where she met her future husband in the 9th grade: Myron “Pinky” Thompson. She was sent to California briefly in high school to broaden her education but always found her way home to Hawai‘i, which she felt was the only place she wanted to live; and

WHEREAS, Laura Thompson earned an undergraduate degree from Lake Erie College in Ohio, at one point hitchhiking to Walter Reed Hospital on the Atlantic Coast to visit Pinky, who had lost an eye from a gunshot wound in Europe during World War II; and

WHEREAS, Laura and Pinky Thompson married and began a family in Maine, returning to O‘ahu upon Pinky’s graduation from Colby College, and together they reared their family, several community organizations, and many animals and young people in whom they saw potential and the need for support in Niu Valley. Every creature, person, and community group found comfort, fairness, and care in Niu Valley because of the couple and, even after Pinky’s passing in 2001, because of Laura’s open heart and open home; and

WHEREAS, although Laura was an accomplished equestrian, with her horse being her favorite mode of transportation throughout her youth and her horses being some of her best friends later in life, she also was surrounded by an ocean-loving family; and

WHEREAS, Laura and Pinky Thompson helped to bring Hui Nalu Canoe Club to Maunalua Bay, where they felt the community needed a place for entire families to enjoy and learn from a traditional, inclusive,

and healthy ocean practice. With Hui Nalu, Laura showcased her water skills, taking gold in the States Championship race she stroked. The family continues to paddle and compete with the club; and

WHEREAS, while Laura Thompson was a partner to her husband in his prominent work for Native Hawaiians and has stood with all of her children in their work and goals, including being a member of the board of directors for the Polynesian Voyaging Society, which Pinky and their son Nainoa have led, Laura was an often sought leader in her own right. She dedicated herself to a deep kuleana that she felt to her family, her community, Maunalua Bay, animals, women's rights, and the importance of preserving and perpetuating Hawai'i's special environment and Native Hawaiian culture; and

WHEREAS, Laura Thompson's brilliant mind, astute observation, quick wit, and compassionate heart made her an asset on several humanitarian, cultural, and environmental boards. She consistently strove to improve the wellbeing of the people of Hawai'i and the environment through honoring the ancestral knowledge of Native Hawaiians and her goals of peace for people and all living creatures. Her words held great weight, and she was firm and direct about her thinking once she had examined all sides, engendering much respect; and

WHEREAS, Laura followed in her mother's footsteps, serving as executive director of the Hawaiian Humane Society. She also was integral on the boards of Mālama Hawai'i, Mālama Maunalua, the Maunalua Fishpond Heritage Center, Hawai'i Island Humane Society, American Humane Association, the Latham Foundation, Alu Like, Papa Ola Lōkahi, The Nature Conservancy, Hui Nalu Canoe Club, Hawai'i Nature Center, The Outdoor Circle, Planned Parenthood of Hawai'i, Parents and Children Together, the YWCA, Palama Settlement and the Zoo Hui; and

WHEREAS, Laura served as one of the few women on the board of directors for the Polynesian Voyaging Society for decades, always representing her Hawaiian values of aloha, mālama, and lōkahi, and urging the entire voyaging community of the Pacific in their kuleana to work together and move forward with awareness and respect for each other and the ocean, but without fear; and

WHEREAS, Laura became a member of the National Oceanic and Atmospheric Administration's Reserve Advisory Council for the Northwestern Hawaiian Islands in 2001, and she remained on that council until 2016, during which time she witnessed the area being established as the Papahānaumokuākea Marine National Monument. Laura became a prominent member of the Native Hawaiian Cultural Working Group that advises the Monument's managers, and she played an integral role in assuring the success of Papahānaumokuākea's World Heritage Nomination as a Natural and Cultural site; and

WHEREAS, Laura served as a mentor to scores of people – especially women – who shared her values and goals and who sought her frank and supportive advice for providing better leadership, education, and outreach within Hawai'i, as well as advice on navigating Hawai'i's political and business structures; and

WHEREAS, the spacious, open lānai and grounds of her home in Niu Valley often hosted board meetings, brainstorming sessions, mediations, and festive parties with live music. Laura also made sure that her home was always available to ideas, animals, and people who needed support and cherishing. Throughout her life, Laura enjoyed watching multiple generations maintain the values and sense of a broader 'ohana, just as she and Pinky had envisioned; and

WHEREAS, with the passing on August 9, 2020, of Laura Kalaukapu Low Lucas Thompson, Hawai'i has lost a compassionate leader and advocate for ensuring that all of Hawai'i's natural resources, including Native Hawaiian knowledge and values, are honored today and protected for future generations;

NOW, THEREFORE, BE IT RESOLVED, that the OHA Board of Trustees expresses its appreciation for Laura Kalaukapu Low Lucas Thompson's lifelong commitment to Hawai'i and Hawai'i's people; and

BE IT FURTHER RESOLVED, that the OHA Board of Trustees expresses its gratitude and sends its aloha to the ‘ohana of the late Laura Thompson and to the members of the organizations she cherished that continue to help honor and heal the lands, oceans, fresh waters, creatures, and people of her beloved home of Hawai‘i; and

BE IT FURTHER RESOLVED, that certified copies of this Resolution be transmitted to the ‘ohana of Laura Thompson.

ADOPTED, this _____ day of _____ 2020, island of O‘ahu, State of Hawai‘i, by the Board of Trustees of the Office of Hawaiian Affairs in its regular meeting assembled.

Trustee Brendon Kalei‘āina Lee - Madam Chair.

Chair Colette Machado – Trustee Lee.

Trustee Brendon Kalei‘āina Lee - I’m going to seek Judge’s advice if I can get a point of information. Judge, I know it’s just a resolution, but it’s an important resolution. Is it ok that we adopt it as written, being adopted on the island of Oahu, or do we need to amend it to say Maui?

Robert G. Klein, Board Counsel - I believe you can do Maui business at a Maui meeting that contains Oahu business.

Trustee Brendon Kalei‘āina Lee – Thank you Judge.

Chair Colette Machado – Vice Chair Lee final disposition on the motion.

Trustee Brendon Kalei‘āina Lee - I have nothing further, Madam Chair.

Chair Colette Machado – We need to do a roll call roll call Vote Madam secretary.

Trustee Brendon Kalei‘āina Lee moves to approve a resolution of the Office of Hawaiian Affairs honoring the life and contributions of Laura Kalaukapu Low Lucas Thompson for the betterment of the people and natural and cultural resources of Hawaii.							
Trustee Robert Lindsey seconds the motion.							
TRUSTEE	1	2	‘AE (YES)	A‘OLE (NO)	KANALUA (ABSTAIN)	EXCUSED	
TRUSTEE LEINA‘ALA AHU ISA			X				
TRUSTEE DAN AHUNA			X				
TRUSTEE KALEI AKAKA			X				
TRUSTEE KELI‘I AKINA			X				
TRUSTEE BRENDON KALEI‘ĀINA LEE	x		X				
TRUSTEE CARMEN HULU LINDSEY			X				
TRUSTEE ROBERT LINDSEY		x	X				
TRUSTEE JOHN WAIHE‘E			X				
TRUSTEE COLETTE MACHADO			X				
TOTAL VOTE COUNT			9				
MOTION: [x] UNANIMOUS [] PASSED [] DEFERRED [] FAILED							
Motion passes unanimously with nine (9) yes votes.							

Chair Colette Machado - Thank you members. Thank you to the family of Aunty Laura. God bless you folks, very much. Aloha everyone and thank you for your generous support for the passage of the recognition

resolution on behalf of Laura Thompson will now continue with our business on V. new business.

V. NEW BUSINESS

A. Committee on Beneficiary Advocacy and Empowerment

1. Action Item BAE #20-03: Approval of 2021 OHA Legislative Package

Chair Colette Machado - Item A I will call on Trustee Waihe'e, the Chair of the Beneficiary Advocacy and Empowerment Committee.

Trustee John Waihe'e IV moves to approve the following new legislative proposals, include those new proposals in the 2021 OHA Legislative Package, and authorize staff (1) to make, as appropriate, technical, non- substantive changes for style, clarity, consistency, and accuracy to all of the legislative proposals in the 2021 OHA Legislative Package and (2) to add or amend preamble language in the measures for framing and editorial purposes:

- A. OHA-1 OHA Biennium Budget Bill Fiscal Year 2021-22/2022-23 (Attachment A)**
- B. OHA-2 OHA CIP Funds to Support Diversified Agriculture, Cultural Protection in Wahiawā (Attachment B)**
- C. OHA-3 Clearing the Path Home for People Experiencing Houselessness (Attachment C)**
- D. OHA-4 21st Century Data Governance for Fact-Based Policymaking (Attachment D)**

Trustee Kalei Akaka seconds the motion.

Chair Colette Machado - It's been moved in second. Any further discussions? Madam Secretary roll call vote please.

Trustee John Waihe'e IV moves to approve the following new legislative proposals, include those new proposals in the 2021 OHA Legislative Package, and authorize staff (1) to make, as appropriate, technical, non- substantive changes for style, clarity, consistency, and accuracy to all of the legislative proposals in the 2021 OHA Legislative Package and (2) to add or amend preamble language in the measures for framing and editorial purposes:

A. OHA-1 OHA Biennium Budget Bill Fiscal Year 2021-22/2022-23 (Attachment A)

B. OHA-2 OHA CIP Funds to Support Diversified Agriculture, Cultural Protection in Wahiawā (Attachment B)

C. OHA-3 Clearing the Path Home for People Experiencing Houselessness (Attachment C)

D. OHA-4 21st Century Data Governance for Fact-Based Policymaking (Attachment D)

Trustee Kalei Akaka seconds the motion.

TRUSTEE	1	2	‘AE (YES)	A‘OLE (NO)	KANALUA (ABSTAIN)	EXCUSED
TRUSTEE LEINA‘ALA AHU ISA			X			
TRUSTEE DAN AHUNA			X			
TRUSTEE KALEI AKAKA		x	X			
TRUSTEE KELI‘I AKINA			X			
TRUSTEE BRENDON KALEI‘ĀINA LEE			X			
TRUSTEE CARMEN HULU LINDSEY			X			
TRUSTEE ROBERT LINDSEY			X			
TRUSTEE JOHN WAIHE‘E	x		X			
TRUSTEE COLETTE MACHADO			X			
TOTAL VOTE COUNT			9			

MOTION: [x] UNANIMOUS [] PASSED [] DEFERRED [] FAILED

Motion unanimously passes with nine (9) yes votes.

2. Action Item BAE #20-04: To Approve the Office of Hawaiian Affairs' 2020 Moloka'i Island Burial Council and Kaua'i/Ni'ihau Islands Burial Council Nominations

Chair Colette Machado – Trustee Waihe'e action item BAE #20-04.

Trustee John Waihe'e IV moves to approve the following individuals as the Office of Hawaiian Affairs' 2020 nominations to the Moloka'i Island Burial Council and the Kaua'i/Ni'ihau Islands Burial Council and to authorize the Administration to timely transmit these nominations to the Governor:

Moloka'i Island Burial Council

1. Ka'ohulani McGuire, *Nominee for Kalawao regional representative*
2. Terna Leimomi Hooper, *Nominee for Kalawao regional representative*
3. Keomailani Hanapi Hirata, *Nominee for East Moloka'i regional representative*

Kaua'i/Ni'ihau Islands Burial Council

1. Sherri-Lee Uilani Cummings, *Nominee for Hanalei regional representative*
2. Wayne T. Harada, Jr., *Nominee for Waimea/Nā Pali regional representative*
3. Waipū'ilani Flores, *Nominee for Kawaihau regional representative*
4. Noelani Kau'i Naumu, *Nominee for Waimea/Nā Pali regional representative*

Trustee Kalei Akaka seconds the motion.

Chair Colette Machado - Recall vote please, Madam Secretary.

Trustee John Waihe'e IV moves to approve the following individuals as the Office of Hawaiian Affairs' 2020 nominations to the Moloka'i Island Burial Council and the Kaua'i/Ni'ihau Islands Burial Council and to authorize the Administration to timely transmit these nominations to the Governor:

Moloka'i Island Burial Council

1. Ka'ohulani McGuire, *Nominee for Kalawao regional representative*
2. Terna Leimomi Hooper, *Nominee for Kalawao regional representative*
3. Keomailani Hanapi Hirata, *Nominee for East Moloka'i regional representative*

Kaua'i/Ni'ihau Islands Burial Council

1. Sherri-Lee Uilani Cummings, *Nominee for Hanalei regional representative*
2. Wayne T. Harada, Jr., *Nominee for Waimea/Nā Pali regional representative*
3. Waipū'ilani Flores, *Nominee for Kawaihau regional representative*
4. Noelani Kau'i Naumu, *Nominee for Waimea/Nā Pali regional representative*

Trustee Kalei Akaka seconds the motion.

TRUSTEE	1	2	'AE (YES)	A'OLE (NO)	KANALUA (ABSTAIN)	EXCUSED
TRUSTEE LEINA'ALA AHU ISA			X			
TRUSTEE DAN AHUNA			X			
TRUSTEE KALEI AKAKA		x	X			
TRUSTEE KELI'I AKINA			X			
TRUSTEE BRENDON KALEI'ĀINA LEE			X			
TRUSTEE CARMEN HULU LINDSEY			X			
TRUSTEE ROBERT LINDSEY			X			
TRUSTEE JOHN WAIHE'E	x		X			
TRUSTEE COLETTE MACHADO			X			
TOTAL VOTE COUNT			9			
MOTION: [x] UNANIMOUS [] PASSED [] DEFERRED [] FAILED						
Motion unanimously passes with nine (9) yes votes.						

B. Committee on Resource Management

1. Action Item RM #20-01: OHA's Preliminary FB 2022/2023 General Funds and Community Grants

Chair Colette Machado - Members we are now moving to V. the Chair will acknowledge Trustee Ahuna regarding the Resource Management Committee referral action item RM #20-01. Trustee Ahuna.

Trustee Dan Ahuna moves to approve:

- A. OHA's preliminary general funds budget of \$3,037,879 per fiscal year to fulfill its requirement of submitting OHA's fiscal biennium (FB) budget bill to the 2021 State Legislature for the FY 2021-2022 (FY22) and FY 2022-2023 (FY23) biennium as detailed in Table 5; and**
- B. OHA's preliminary community grants program budget up to \$3,700,000 per fiscal year for the FY 2021-2022 (FY22) and FY 2022-2023 (FY23) biennium as detailed in Table 6.**

Trustee Robert K. Lindsey seconds the motion.

Chair Colette Machado – I'll call on Madam Secretary to do the roll vote, please.

Trustee Dan Ahuna moves to approve:						
A. OHA's preliminary general funds budget of \$3,037,879 per fiscal year to fulfill its requirement of submitting OHA's fiscal biennium (FB) budget bill to the 2021 State Legislature for the FY 2021-2022 (FY22) and FY 2022-2023 (FY23) biennium as detailed in Table 5; and						
B. OHA's preliminary community grants program budget up to \$3,700,000 per fiscal year for the FY 2021-2022 (FY22) and FY 2022-2023 (FY23) biennium as detailed in Table 6.						
Trustee Robert K. Lindsey seconds the motion.						
TRUSTEE	1	2	'AE (YES)	A'OLE (NO)	KANALUA (ABSTAIN)	EXCUSED
TRUSTEE LEINA'ALA AHU ISA			X			
TRUSTEE DAN AHUNA	x		X			
TRUSTEE KALEI AKAKA			X			
TRUSTEE KELI'I AKINA			X			
TRUSTEE BRENDON KALEI'AINA LEE			X			
TRUSTEE CARMEN HULU LINDSEY		x	X			
TRUSTEE ROBERT LINDSEY			X			
TRUSTEE JOHN WAIHE'E			X			
TRUSTEE COLETTE MACHADO			X			
TOTAL VOTE COUNT			9			
MOTION: [x] UNANIMOUS [] PASSED [] DEFERRED [] FAILED						
Motion unanimously passes with nine (9) yes votes.						

C. Request for approval to waive Action Item BOT #20-11: Approval of non-OHA Limited Liability Company Managers for Hi'ilei Aloha LLC from the Committee on Resource Management to the Board of Trustees pursuant to the Office of Hawaiian Affairs Board of Trustees Bylaws (approved March 5, 2020) Article VIII, Section L

Chair Colette Machado - Thank you members. We now move on to V.C. This is in regards to an approval to waive action item BOT #20-11. The Chair will call on Carol.

Carol Hoomanawanui – Good morning Chair and Trustees. The action item BOT #20-11, relating to the approval of the non-OHA LLC Manages for Hi'ilei Aloha. This is actually a matter that would fall under the RM Committee. However, there was a withdrawal of a previously vetted applicant in mid-October which then pushed

back when this action item could be brought before the Board for consideration. And so the bylaws, Article VII, Numeral 8, section L requires that a matter that is waived from the committee to the Board requires a 2/3 vote. So we did receive confirmation from RM Chair Ahuna to waive this action, and so this action must be taken before the action item is discussed and decided upon. So there is recommended motion for the Board to consider to approve the waiver before actually discussing the action item. That's it Madam Chair. If there are any other questions.

Trustee Dan Ahuna moves to approve a waiver of Action Item, Action Item BOT #20-11: Approval of non-OHA Limited Liability Company Managers for Hi'ilei Aloha LLC from the Committee on Resource Management to the Board of Trustees pursuant to the OHA BOT Bylaws (approved March 5, 2020) Article VIII, Section L.

Trustee Robert Lindsey seconds the motion.

Chair Colette Machado - Thank you, it has been moved and seconded for the waiver. Any discussion on the waiver, if not I'll call for the roll call vote.

Trustee Carmen Hulu Lindsey – Madam Chair.

Chair Colette Machado – Trustee Carmen Hulu Lindsey.

Trustee Carmen Hulu Lindsey - I would actually like to amend this motion in asking that we defer this action item.

Trustee John Waihe'e IV – If the motion fails then its automatically deferred.

Carol Hoomanawanui - Yes, that is correct.

Trustee Carmen Hulu Lindsey – Madam Chair, I'm ok with going ahead with the vote.

Chair Colette Machado - Ok, so let's proceed with the vote. If it fails, then we can do the next step.

Trustee John Waihe'e IV – Madam Chair.

Chair Colette Machado – Trustee Waihe'e.

Trustee John Waihe'e IV - Madam Chair, I hate to say this, but I'm inclined not to waive it and it's not because I have a problem with the names. I just want to make sure since you know the LLCs have gotten a lot of attention recently. That there's no appearance of anything being rushed or not going through the process, and that's mostly to just give a safe appearance. If there are people who disagree with me that can explain why, I'm open to listen. Maybe I change my mind, but that's where my thoughts are right now.

Trustee Robert Lindsey – Madam Chair.

Chair Colette Machado – Trustee Robert K. Lindsey.

Trustee Robert K. Lindsey – Thank you Madam Chair. I want to speak in support of the motion as we all know, we have struggled and wrestled with our LLC matter for so long. And this is a matter we need to get settled as soon as we can. So that is my rationale for speaking in support of this motion.

Trustee Brendon Kalei'aina Lee - Madam Chair.

Chair Colette Machado – Trustee Lee.

Trustee Brendon Kalei‘āina Lee - If I can ask for some clarification from Ka Pouhana on the status of the LLCs, maybe that might give some insight to the other Trustees as to if there is actually any urgency that we need to move this forward now before the end of the year. Keep in mind trustees if this does not move today then this will be deferred until January at the earliest.

Chair Colette Machado – Also the Chair will ask CEO, Sylvia Hussey to offer any kind of comments that could help give us a better understanding of this motion.

Sylvia Hussey, CEO - Thank you Chair, I will. This is in response to the Board action taken in May of 2019, at which time the Board made specific decisions about wind down of LLCs, as well as search for new managers. So this is just wanting to wrap up that action to the Board. The wind down activities are continuing and almost done as well as this open action item. And so that's the sense of urgency that administration press for to bring it before you. Otherwise, as Vice Chair Lee points out, it won't be until January, and the intent of the action is to have the new managers in operations by January. So this period of time in November and December would allow for transitions and then to actually cleanly start there. So hence again the urgency for administration to bring this action forward as a closure of board action taken in May of 2019.

Trustee Brendon Kalei‘āina Lee - Madam Chair

Chair Colette Machado – Trustee Lee.

Trustee Brendon Kalei‘āina Lee - Can I get further clarification from Ka Pouhana on two points? Ka Pouhana, two points. If we had not been in a COVID situation and the board had been able to meet on a regular basis as we normally do would this had come to the Board in a timely manner before this and second based on what you just said, is my understanding correct that if the Board defers until January those new managers will not be able to be operational until March? Given that if we approve them now in October, you said November December to bring them up so that they'll be ready for operation in January, would that mean if we wait till January to approve, they will not be operational until March?

Sylvia Hussey, CEO - Uh, that is correct, because if the Board approves or takes up the action in January at the earliest to your point, then the onboarding and wrapping at the earliest you know it could be pressed in service till February, March, you know, at the latest. To your first question and point had COVID the reaching of the minimum number of seats occurred in February of 2020. So we would have been prepared to bring this action to the board in March of 2020 after we had finished all the vetting. Of course COVID so we reactivated the search in early September to be able to bring closure to this matter with the board.

Trustee Brendon Kalei‘āina Lee - Thank you, Madam Chair.

Chair Colette Machado – Trustee Lee.

Trustee Brendon Kalei‘āina Lee - Madam Chair, given the clarifications given by Ka Pouhana, I would like to rise to speak in favor of this motion. To Trustee Waihe'e's point I do not believe that the Board is rushing this matter. Had COVID not happen, the Board would have had ample time to bring this to the RM Committee over six months ago. Given the situation that we're in and given that we are following our own guidelines by our bylaws, I don't believe anyone has any cause to say that we are rushing this matter. Given the fact that we need to finish wrapping up the closure of these LLCs waiting to defer this until January to be operational by late February at the earliest and March, in my opinion, is not acceptable. I think the sooner that we move on this as Trustee Robert Lindsey said, the better will be overall for all. Thank you, Madam Chair.

Chair Colette Machado – Thank you, anyone else would like to make offer any comments after hearing from the CEO on the rationale behind the action for today.

Trustee Dan Ahuna – Madam Chair. Yes, I'd just like to speak in support of this action for today. You know, I believe in the past we all have made decisions to keep up with our timeline and we are transitioning you know, so I think it's a good time right now to make sure we finish up unfinished business. So I'm speaking in support. Thank you.

Chair Colette Machado – Thank you Trustee Ahuna. Any other trustee would like to comment on this action on this discussion.

Trustee Kalei Akaka – Madam Chair.

Chair Colette Machado – Trustee Kalei Akaka.

Trustee Kalei Akaka – Mahalo, I do believe we need to have a proper process, so I do have some concerns regarding this waiver. And that we have time for our Board of Trustees to interview the candidates.

Chair Colette Machado – I'll ask Sylvia to actually say whether or not the Trustees had a role with the interview of the candidate. Can you comment on that?

Sylvia Hussey, CEO – Sure, the Trustees approved a process to seat the LLC managers, a timeline as well as the position, description. So what administration did was implement that action item which did not include the Trustees vetting. It was up to administration to use the criteria, vet for minimum qualifications and also make recommendations on the seating which the Trustees approved. So the Trustees that approved three non-OHA volunteer managers, they had recommended or approved a staggered term. Three years, two years, one year, so that there would be overlap and consistency, and they also approve the position description which is in the action item as Attachment B. Administration then follow that timeline, took that advertised at the end of 2019, after the board approved it and it wasn't until February of 2020 that the minimum applicants were vetted and ready to be seated then COVID hit. In the reactivation of the work, in September, we were ready to bring this action item to the RM Committee at the October 21st meeting. But as explained, one applicant withdrew, and so we had to pull the action item from the RM agenda. Re-vet and Seat a replacement position and that's where we are here. And that's why we wanted to also accelerate and make sure that this board who had done the actions in May as well as the subsequent action in November to seat the managers were also closure to also make the final decision on the recommendations that administration is bringing forward. So Trustee Akaka as far as the process the Board approved the process, an administration implemented and followed that process.

Chair Colette Machado - Thank you, Sylvia. Any further discussions?

Trustee Keli'i Akina – Madam Chair.

Chair Colette Machado – Chair recognized Trustee Akina.

Trustee Keli'i Akina - Thank you, I'm actually very pleased that we're on the same page in terms of where we want to go. I think we all agree that it's time to replace the LLC management with non OHA personnel. And I'm also very grateful for the volunteers, which I notice as I look around the room here includes some of the candidates who are being recommended. I want to thank them for being here and appreciate this very much that they took the time. I just want to pursue this line of clarification a little bit more. I wanted to know why we didn't bring this matter before the RM committee this month through this video means. I mean we could have met; we could have dealt with this at RM or maybe I have missed something. Maybe that's been answered already. Along with that I would appreciate knowing Trustee Carmen Hulu Lindsey's rationale a little bit more on not waiving the item today.

Chair Colette Machado – Sylvia would you like to make another offer and clarification?

Sylvia Hussey, CEO – Sure as previously explained, the action item was on the October 21st RM Committee agenda and literally the day before the agenda was to be filed, we got notification of the withdrawal of one of the applicants. We immediately notified RM committee chair and leadership and the agenda was amended. In the meantime, we were vetting a replacement applicant and recommended person, and in the meantime RM leadership then notified the Chairs office as to the willingness to hear this, under the extenuating circumstances. So it was intended to come through the process at RM. Literally the agenda was prepared. The action item was prepared, signed off and literally the night before the agenda was to be filed we were notified of the withdrawal of one of the recommended applicants.

Chair Colette Machado – Trustee Leina‘ala Ahu Isa do you any mana‘o that you would like to share?

Trustee Leina‘ala Ahu Isa – I thought about it. I read their resumes I know couple of them so I don’t know if it’s a conflict. Yeah, that’s my dilemma. I’m just trying to figure out. I want to see who votes yes or no, up or down on these three people.

Chair Colette Machado - So we’ll begin with the waiver.

Trustee Carmen Hulu Lindsey - Madam Chair the reason I asked to defer this item, actually, I want it to be reviewed in the Resource Management Committee so we can have an in depth discussion mainly I have been interviewed by the Ethics Commission and the Attorney General’s Office both on our LLCs. And I feel that we need to clear it with our Board Counsel if this is the best structure for us in the in the future. Because, as explained to me by them, the trustees are responsible for every penny out of OHA. And this is one of our biggest assets, so we’re putting it in the hands of non OHA managers, which is fine, but my question is I also feel like Trustee Akaka that we should have interviewed the applicants to be sure that this little board of three people are unbiased are not all associated with one another, that they all don’t work for Waimea Valley. I mean that kind of thing so that we can be assured that this very valued asset is protected for the people of Hawai‘i, for our beneficiaries. That’s my concern, that this is well overseen by this board. This board of managers. So I would like to have vetted further in the Resource Management Committee. I don’t see any pressing business that needs to be done by December or January for the LLC’s, so I don’t see any problem in delaying it. Thank you.

Chair Colette Machado - Any other discussions before I move forward?

Trustee Brendon Kalei‘aina Lee - Madam Chair.

Chair Colette Machado – Trustee Lee.

Trustee Brendon Kalei‘aina Lee - I have a point of clarification for something on an issue that Trustee Ahu Isa brought up. Trustee Ahu Isa I don’t believe there’s anybody that’s being proposed that the majority of us don’t already know. The only conflict is if you actually do business with them. This is Hawai‘i it’s going to be hard for us to find anybody for anything, anytime, anywhere that we’re not going to know somehow, someday. The State ethics laws pertain to if you do business with them. So unless you own a business with them, they work for you or you work for them. There is no conflict. Thank you, Madam Chair.

Chair Colette Machado - Thank you members. I will proceed with the waiver. It has been moved and seconded. Madam secretary could you confirm if we have a motion on the floor?

Dayna Pa - Yes we do. It was moved by Trustee Ahuna and seconded by Trustee Robert K. Lindsey.

Chair Colette Machado - It’s been moved and second, that’s correct. So if there’s no further discussion I’ll ask Madam Secretary to do a roll call vote.

Trustee Dan Ahuna moves to approve a waiver of Action Item, Action Item BOT #20-11: Approval of non-OHA Limited Liability Company Managers for Hi‘ilei Aloha LLC from the Committee on Resource Management to the Board of Trustees pursuant to the OHA BOT Bylaws (approved March 5, 2020) Article VIII, Section L.

Trustee Robert Lindsey seconds the motion.

TRUSTEE	1	2	‘AE (YES)	A‘OLE (NO)	KANALUA (ABSTAIN)	EXCUSED
TRUSTEE LEINA‘ALA AHU ISA				X -2nd	X -1st	
TRUSTEE DAN AHUNA	x		X			
TRUSTEE KALEI AKAKA				X		
TRUSTEE KELI‘I AKINA				X		
TRUSTEE BRENDON KALEI‘ĀINA LEE			X			
TRUSTEE CARMEN HULU LINDSEY				X		
TRUSTEE ROBERT LINDSEY		x	X			
TRUSTEE JOHN WAIHE‘E			X -2nd		X -1st	
TRUSTEE COLETTE MACHADO			X			
TOTAL VOTE COUNT			5	4		
MOTION: <input type="checkbox"/> UNANIMOUS <input type="checkbox"/> PASSED <input type="checkbox"/> DEFERRED <input checked="" type="checkbox"/> FAILED						
Motion fails with five (5) yes votes and four (4) no votes.						

Chair Colette Machado – Motion fails so we don’t have an item for D because the waiver failed and we cannot proceed to action Item BOT #20-11. So will now move to form a V.E., which is the T-Level Trustee Policy for OHA.

D. Action Item BOT #20-11: Approval of non-OHA Limited Liability Company Managers for Hi‘ilei Aloha LLC

Request for approval to waive Action Item BOT #20-11: Approval of non-OHA Limited Liability Company Managers for Hi‘ilei Aloha LLC from the Committee on Resource Management to the Board of Trustees pursuant to the Office of Hawaiian Affairs Board of Trustees Bylaws (approved March 5, 2020) Article VIII, Section L failed. No discussion was held regarding Item V.D.

E. Deliberation and decision making on the Report by the Permitted Interaction Group to investigate the development of T-Level Trustee policies for OHA’s Board Governance Framework of its findings and recommendations. Pursuant to HRS §92-2.5(b)(1)(C)

Chair Colette Machado - I’ll call on Trustee Lee. Item E under new business.

Trustee Brendon Kalei‘āina Lee - Thank you, Madam Chair, unless any of the members have any questions specifically on their report. I believe this fulfills our obligation under Sunshine Law for the Permitted Interaction Group. There is no action being asked to be taken by the board by the permitted Interaction Group. Thank you, Madam Chair.

Trustee Carmen Hulu Lindsey – Chair.

Chair Colette Machado – Trustee Carmen Hulu Lindsey.

Trustee Carmen Hulu Lindsey - I just want to commend Trustee Lee for a great job in this preparation of the report for the pig. Because I don’t think we realized what a big job this is going to be. And the thoroughness of his report tells us that this is going to be a really big job, and probably policies that we really, really need to be more detailed than what we have today. So I want to thank Trustee Lee for that.

Sylvia Hussey, CEO - Chair Machado

Chair Colette Machado – Sylvia Hussey, CEO.

Sylvia Hussey, CEO – May I ask just a clarification if we can thank, because of the action and because we're not hearing action item #20-11, may I ask the recommended managers, thank them for being on and then they can leave the meeting and continue on that day. So I just wanted to thank everyone Auntie Leilani, Greg as well as Bob who are on and were prepared to participate. Thank them for being on and they can go ahead and leave and continue on their day.

VI. COMMUNITY CONCERNS

Chair Colette Machado - I'd like to move on now to community concerns. Carol or Dayna do we have anyone signed up?

Dayna Pa – Madam Chair there is no one signed up for community concerns.

VII. ANNOUNCEMENTS/FYI

Chair Colette Machado – I have no announcements.

VIII. ADJOURNMENT

Chair Colette Machado – The Chair would like to entertain a motion to adjourn.

Trustee Carmen Hulu Lindsey moves to adjourn.

Trustee Leina'ala Ahu Isa seconds the motion.

Trustee Brendon Kalei'aina Lee – Can we have discussion on the motion.

Chair Colette Machado – Trustee Brendon Kalei'aina Lee.

Trustee Brendon Kalei'aina Lee – Given that we are adjourning our last meeting for 2020, I would like to bid a fond aloha to Uncle Bob Lindsey. I know we recognize him at the Tuesday Hawaii Island, but this will be the last time that the Board will adjourn a meeting with our beloved Trustee Robert Lindsey, from Hawai'i Island. I would like to wish him all the best in the future and he will be sorely missed on the Board. Aloha Uncle Bob.

Chair Colette Machado – Thank you Trustee Lee.

Trustee Dan Ahuna – Madam Chair.

Chair Colette Machado – Trustee Dan Ahuna.

Trustee Dan Ahuna - I would like to wish him a fond aloha and mahalo for serving us. Mahalo Uncle Bob.

Trustee Carmen Hulu Lindsey – Madam Chair.

Chair Colette Machado – Trustee Carmen Hulu Lindsey.

10:47 am Trustee Robert Lindsey leaves the meeting.

Trustee Carmen Hulu Lindsey – I'd also like to mahalo Uncle Bob for all his service to our Hawaii people and wish him well. Wish him blessings with good health and many more years of service in his community. Aloha.

Trustee Keli'i Akina – Madam Chair.

Chair Colette Machado – Trustee Akina.

Trustee Keli'i Akina - Uncle Bob, I hope you will keep writing books and send them to us, aloha.

Trustee Leina'ala Ahu Isa - Bob and I will be visiting you on the Big Island.

Trustee John Waihe'e IV – As we adjourn our last meeting I want to thank also Uncle Bob Lindsey and he's like my actual relative too, when I say that. I want to thank him because you know he wasn't someone who sought out this position. I want to thank him for first of all considering taking making this job when we appointed him. When he probably had a life that was very calm and happy and not hectic. And for jumping in and whether it's as a chairman of a committee or chairman of the Board, he never stood on the sidelines. He was always really active, even though he you know wasn't loud about it, and I again will miss him and thank him a great deal.

Chair Colette Machado - Anyone else?

Trustee Kalei Akaka - I just wanted to say mahalo to Uncle Bob and to your 'ohana Uncle Bob for all these years for all the aloha and all the efforts and love that you put into the work here on the Board and I really look forward to seeing you down the line and hoping we can work together somewhere, mahalo.

Chair Colette Machado – Thank you Trustees. Anyone else? With that said, let me ask the secretary to do a roll call to adjourn. Thank you for that tribute to Uncle Bob. Madam Secretary roll call vote, please.

Trustee Carmen Hulu Lindsey moves to adjourn. Trustee Leina‘ala Ahu Isa seconds the motion.							
TRUSTEE	1	2	‘AE (YES)	A‘OLE (NO)	KANALUA (ABSTAIN)	EXCUSED	
TRUSTEE LEINA‘ALA AHU ISA		x	X				
TRUSTEE DAN AHUNA			X				
TRUSTEE KALEI AKAKA			X				
TRUSTEE KELI‘I AKINA			X				
TRUSTEE CARMEN HULU LINDSEY	x		X				
TRUSTEE ROBERT LINDSEY						X	
TRUSTEE JOHN WAIHE‘E			X				
TRUSTEE COLETTE MACHADO			X				
TRUSTEE BRENDON KALEI‘AINA LEE			X				
TOTAL VOTE COUNT			8			1	
MOTION: [] UNANIMOUS [x] PASSED [] DEFERRED [] FAILED Motion passes with eight (8) yes votes and one (1) excused.							

The meeting was adjourned at 10:50 am.

Respectfully submitted,

Dayna Pa, Board Secretary

Signature not available

Colette Y. Machado, Chairperson
Board of Trustees

As approved by the Board of Trustees on _____ and signed by the Vice Chairperson at the time of the meeting:

Brendon Kalei‘āina Lee, Vice Chairperson
Board of Trustees

Attachments:

1. Emailed Testimony from Mona Bernardino, COO, Hi‘ilei Aloha LLC dated October 27, 2020
2. Emailed Testimony from Richard Pezzulo, ED, Hi‘ipaka LLC
3. Emailed Testimony from Chris Cramer dated October 29, 2020
4. Emailed Testimony from Jeannine Johnson dated October 28, 2020
5. Emailed Testimony from Aulani Wilhelm dated October 29, 2020



59-864 Kamehameha Hwy.
Hale'iwa, Hawai'i 96712
Phone: (808) 275-4322

October 27, 2020

To: OHA Board of Trustees

From: Mona Bernardino, Chief Operating Officer, Hi'ilei Aloha LLC

Subject: Testimony
Board of Trustees Meeting, October 29, 2020
D. Action Item BOT #20-11: Approval of non-OHA Limited Liability Company
Managers for Hi'ilei Aloha LLC

I am writing in support of BOT approval of the three volunteer, uncompensated Managers for Hi'ilei Aloha LLC, effective January 1, 2021.

I agree wholeheartedly with Richard Pezzulo about the qualifications and commitment of these three candidates. Together they have strong community connections, knowledge of 'āina and Hawaiian culture, and an understanding of philanthropy.

They will make a good addition to Hi'ilei Aloha LLC and Hi'ipaka LLC.

Mahalo.



WAIMEA VALLEY

HI'IPAKA LLC

To: OHA Board of Trustees

From: Richard Pezzulo, Executive Director, Hi'ipaka LLC

Subject: Testimony

Board of Trustees Meeting, October 29, 2020

D. Action Item BOT #20-11: Approval of non-OHA Limited Liability Company
Managers for Hi'ilei Aloha LLC

I am writing in full support of BOT approval of the three volunteer, uncompensated
Managers for Hi'ilei Aloha LLC, effective January 1, 2021:

Roberts "Bob" Leinau

Greg C. Pietsch

Leilani Kūpahu-Marino Kaho'āno

These three individuals will bring a good balance of culture, business and financial expertise, and
commitment and dedication to Hi'ilei Aloha and eventually Hi'ipaka LLC.

All three individuals have strong community connections and are dedicated to making Hawaii a
better place to live. They are proven community leaders and are actively involved in a number
of cultural and conservation organizations.

Besides having outstanding business, community and cultural experiences, the three individuals
have a very strong connection to Hi'ipaka LLC and Waimea Valley.

Bob Leinau is a previous long term manager of Waimea Valley and since 2012 has been a
member of the Hi'ipaka LLC Aha Hui Advisory Group. His institutional knowledge, advice and
assistance has been very valuable in helping the Valley through some difficult times.

Greg Pietsch's grandfather started the commercial Waimea Valley in the 1980. Greg is dedicated
to the Valley providing advice and assistance, freely, whenever called upon. His finance and
land management expertise will be a very large benefit to the Valley.

Leilani Kūpahu-Marino Kaho'āno has a strong cultural background and is a member of the Hewahewa
ohana. She has been active in organizing cultural groups to experience and learn about the Valley.
Leilani also helped to secure and organize the blessing for the only parcel in the Valley that was not
owned by Hi'ipaka LLC and contains the burial site of Ka Huna Nui Hewahewa.

As the Executive Director of Hi'ipaka LLC I strongly recommend BOT approval of the three individuals
as Hi'ilei Aloha LLC managers.

Mahalo

Dayna Pa

From: chris cramer <ccramer@maunaluafishpondheritage.org>
Sent: Thursday, October 29, 2020 9:19 AM
To: BOT Meetings
Subject: Support for Resolution honoring the life and contributions of Laura Kalaukapu Low Lucas Thompson for the betterment of the people and natural and cultural resources of Hawai'i.†

Support for the Resolution Honoring Laura Thompson

Aloha Board of Trustees for the Office of Hawaiian Affairs,

Aunty Laura Thompson was the steerswoman towards a better Hawai'i. She had great aloha for all peoples. From Tahiti, Rapa Nui, Aotearoa and across the world, Laura was a uniter who opened her home to bring people together. Sometimes it meant even giving up her own bed, but that didn't matter to her.

Aunty Laura stayed connected to her roots at Niu where she was raised. As a child she was surrounded by horses, cows and chickens at the family dairy. Her home was encircled by a lei of her children, grandchildren, and great grandchildren whom she loved dearly. Throughout her life she cared about all living creatures big and small. Her motto was "Keep It Simple". We were honored to serve alongside her in the long effort to preserve Kalauha'iha'i Fishpond and Kānewai Spring. Her work in the community inspired many. Her legacy and the values she upheld will continue to bear fruit across Hawai'i.

Mahalo for the opportunity to support this resolution to honor Laura Thompson and her life of service to Hawai'i.

Chris Cramer

Executive Director

Maunalua Fishpond Heritage Center



--

Maunalua Fishpond Heritage Center 501(c)(3)
Facebook: [Maunalua Fishpond Heritage Center](#)
P.O. Box 240204
Honolulu, HI 96824-0204

Dayna Pa

From: Jeannine Johnson <jeannine@hawaii.rr.com>
Sent: Wednesday, October 28, 2020 7:53 PM
To: BOT Meetings
Subject: Support for Resolution honoring the life and contributions of Laura Kalaukapu Low Lucas Thompson for the betterment of the people and natural and cultural resources of Hawai'i.†

Aloha mai kākou,

I would like to offer my support for the Resolution honoring Laura Thompson. Growing up in Niu Valley with a father who paddled and coached for Hui Nalu, I have known of the Thompsons most of my life. But it wasn't until 2007 that I got to know Auntie Laura on the Board of the Maunalua Fishpond Heritage Center. We've met nearly every month since then, and I would always look forward to hearing her mana'o and stories about the past. She had a way of keeping us focused, especially during difficult times or challenges, by saying "Keep it simple." I will always be grateful for the time I had with her and will never forget the aloha she freely shared with everyone.

Mahalo,

Jeannine Johnson, Secretary
Maunalua Fishpond Heritage Center
Ph: (808) 395-1000 x 226 (w)
Email: jeannine@hawaii.rr.com





October 29, 2020

Office of Hawaiian Affairs
Board of Trustees

Re: Resolution honoring the life and contributions of Laura Kalakapu Low Lucas Thompson

Aloha Chairperson Machado and trustees,

Mahalo for the opportunity to briefly speak in support of the proposed resolution honoring the life and contributions of Laura Kalaukapu Low Lucas Thompson for the betterment of the people and natural and cultural resources of Hawaii.

The resolution does a wonderful job briefly detailing her incredible life of service to her family, her community, our lāhui, and all of Hawai'i. With her passing we have indeed lost "a compassionate leader advocate for ensuring that all of Hawaii's natural resources, including Native Hawaiian knowledge and values, are protected for future generations."

I was incredibly fortunate and blessed to have been mentored by her for nearly 25 years. Across that time we worked on many community initiatives together, namely the founding of Mālama Hawai'i, a coalition of >100 people and organizations across our pae'āina that was founded upon a simple but profound vision, that "Hawaii be a place where the land and sea are cared for and that is healthy and safe for all people." Auntie Laura was relentless in making sure we linked sectors together from health, economic development, conservation, and human services together recognizing that addressing problems in silos would only lead to greater disparity and a scarcity mindset. The foundational work of Mālama Hawai'i became the early framework for what has now become the Hawai'i Green Growth initiative.

I was also privileged that Auntie Laura agreed to serve as a founding member of the Northwestern Hawaiian Islands Coral Reef Ecosystem Reserve Advisory Council, a role which she dedicated herself to for 15 years. In that capacity she brought wisdom and experience to this fledgling initiative that has since become the Papahānaumokuākea Marine National Monument and World Heritage site, globally designated as a Particularly Sensitive Sea Area under the International Maritime Organization as well, a distinction held by less than two dozen places on Earth. Her voice ensured a values-based design of the Mokupāpapa Discovery Center in Hilo and the philosophy of "bringing the place to the people, not the people to the place" for our educational initiatives that have since build a thriving global community of people who have also come to love this extraordinary ancestral realm in support of our efforts.





Without a doubt, had she not taken a leadership role in bringing Native Hawaiian leaders together around the proposal to seek World Heritage designation by convening people who otherwise agreed on little together under the shade of her Kiawe tree in Niu Valley, we would not have had the honor of becoming the first mixed natural/cultural seascape inscribed under the UNESCO convention. Her 'alo he alo' approach to forging understanding, and then consensus, enabled this and many other pivotal agreements within our community. These are just two examples.

These kinds of traits and values she grounded herself in were generously passed forward to the dozens of people she mentored including myself. She made us better by her example and by sometimes sternly, sometimes gently steering us, always guiding us with the deepest of aloha. Her deep care for 'āina was matched only by her deep love for people. She generously invested her time and care in both.

Mahalo for honoring her today with this resolution of recognition and gratitude. This recognition you bestow on her today, while in her name, is not something important to do for her – she has never needed nor would ever have sought such acknowledgement. Instead, this recognition today is really for for each one of us, and for future generations – so we can hold and remember her embodiment of the deep and necessary human qualities of a true and humble leader, mentor, matriarch, mother, grandmother, and friend. The recognition is also important – particularly at a time when the world is so upside down – so we continue to have faith in each other that such human character is possible to hold within, and so we can be inspired to strive to build such character in ourselves and those around us. These are the attributes of character needed to care for our island home and each other in a way worthy of our ancestors and the future, whatever we may be facing.

Mahalo hou for considering my thoughts this morning.

Me ke aloha,

T. 'Aulani Wilhelm
(sent via email)



**STATE OF HAWAII
OFFICE OF HAWAIIAN AFFAIRS
560 N. NIMITZ HIGHWAY, SUITE 200
(VIRTUAL MEETING - VIA ZOOM WEBINAR)
MEETING OF THE BOARD OF TRUSTEES
MINUTES**

December 10, 2020 11:00 a.m.

ATTENDANCE:

Chairperson Carmen Hulu Lindsey
Vice-Chairperson Leina'ala Ahu Isa
Trustee Dan Ahuna
Trustee Kaleihikina Akaka
Trustee Luana Alapa
Trustee Brendon Kalei'aina Lee
Trustee Keola Lindsey
Trustee John Waihe'e, IV

Kurt Klein, Board Counsel

BOT STAFF:

Crayn Akina
Dayna Pa
Melissa Wennihan

ADMINISTRATION STAFF:

Sylvia Hussey, Ka Pouhana / CEO
Casey Brown, Ka Pou Nui / COO
Everett Ohta, Corporation Counsel
Kevin Chak, IT
Marc Bantolina, IT
Raina Gushiken, Corporation Counsel
Ramona Hinck, CFO

I. CALL TO ORDER

Ka Pouhana Hussey: Aloha Mai kākou Trustees - Sylvia Hussey, Chief Executive Officer / Ka Pouhana / Administrator of the Office of Hawaiian Affairs. In accordance with the Board of Trustees Operations Manual, the Administrator has set the first organizing meeting. Administration has filed the agenda and Administration by process will turn it over to Senior Trustee John Waihe'e, IV

Senior Trustee Waihe'e calls the Board of Trustees meeting for Thursday, December 10, 2020 to order at **11:03 a.m.**

Senior Trustee Waihe'e notes for the record that **PRESENT** are:

MEMBERS			AT CALL TO ORDER (11:03 a.m.)	TIME ARRIVED
TRUSTEE	LEINA'ALA	AHU ISA	PRESENT	
TRUSTEE	DAN	AHUNA	PRESENT	
TRUSTEE	KALEIHIKINA	AKAKA	PRESENT	
TRUSTEE	LUANA	ALAPA	PRESENT	
TRUSTEE	BRENDON KALEI'AINA	LEE	PRESENT	
TRUSTEE	CARMEN HULU	LINDSEY	PRESENT	
TRUSTEE	KEOLA	LINDSEY	PRESENT	
TRUSTEE	JOHN	WAIHE'E, IV	PRESENT	

At the Call to Order, **EIGHT (8) Trustees are PRESENT**, thereby constituting a quorum.

II. INTRODUCTIONS

Senior Trustee Waihe'e turns it over to Ka Pouhana Sylvia Hussey for introductions.

Ka Pouhana Hussey: Thank you trustee. This was just an opportunity, as this is the first organizing meeting for each Trustee to put face and voice to themselves and as we recently had three trustees be administered, the oath of office, this was the opportunity for each Trustee in attendance to be able to introduce themselves.

Trustee Ahu Isa: Aloha, I'm a Trustee At-large, first elected in 2014 and I look forward to working with the new trustees.

Trustee Ahuna: First of all; it's great to see everyone back again and it's great to see our new trustees. Congratulations to Trustee Keola Lindsey and Trustee Luana Alapa; it's a pleasure having you guys on board. My name is Dan Ahuna, I represent the island of Kaua'i and Ni'ihau – this is going on to my third term and I'm very happy to be here and I look forward to moving ahead this year and getting some work done. So, thank you guys all for being here, Mahalo.

Trustee Akaka: Aloha Kakahiaka everyone. It's so nice to be together and such an exciting time with our newly elected Trustees. Congratulations. Congratulations to our returning trustee; Dan Ahuna and also to Luana and Keola; a sincere congratulations to you both as well. This is really, exciting to work with you both going forward. I just want to also thank our administration, our CEO and all our trustees for trying to make this as smooth a transition as we can in these ever-evolving times that we are in; it certainly keeps it exciting. I am truly looking forward to seeing what we can continue and what more we can do for our Hawaiian people. Mahalo.

Trustee Lee: Aloha, I am one of the Trustees At-Large. I want to welcome aboard the newly elected Trustees, Trustee Luana Alapa and Trustee Keola Lindsey as well as welcome back Trustee Ahuna. I look forward to seeing what OHA has planned for the next year coming, given the trying time that we had in 2020 and looking forward to us all moving forward. Mahalo.

Trustee Carmen Hulu Lindsey: Aloha Mai Kākou to all our people, especially my Maui people. We are anxious to move on and get started. I want to congratulate our new trustees and congratulate Trustee Ahuna for being re-elected. I'm just so excited that this is the end of a horrible year and hopefully next year is going to be just wonderful. Aloha.

Trustee Keola Lindsey: I'm very humbled and honored to be here today for my first meeting. I am excited to get to work with my fellow trustees and our administration. I know there are people in our community that need OHA now more-than-ever, and I'm excited to get to work and to do good things for our people.

Trustee Alapa: Aloha, I'm honored and blessed to be here and looking forward to meeting in-person, but I know for now it will have to be this way. I'd like to acknowledge the people of Moloka'i, I'm honored to be serving you as your new trustee. I look forward to a wonderful year of service and many years to come after that, but it's all about the people first. Mahalo.

Trustee Waihe'e: Aloha, I am Trustee John Waihe'e, IV, a Trustee At-Large, and I'd also like to welcome our newest trustees Keola Lindsey and Luana Alapa and congratulate our friend and returning colleague Trustee Dan Ahuna. I also look forward to working with everyone and getting started on the business at-hand. With that, we have received quite a few signups for Public Testimony which is next on our agenda.

III. PUBLIC TESTIMONY ON ITEMS LISTED ON THE AGENDA*

Senior Trustee Waihe'e: I will review our Public Testimony Guidelines. Public Testimony should be limited to matters listed on the meeting agenda and will occur during the Public Testimony portion of the agenda. Once the public testimony section on the agenda has concluded, oral testimony online will no longer be accepted. Your name will be called, and your microphone will be unmuted when it is your turn to testify. If you are not audible, you will be muted, and the next testifier will be called. Your name will be called again before the conclusion of the public testimony section. State your name, organization if applicable, agenda items you are testifying on, and your position on each of the agenda items. If you begin to address other issues not on the meeting agenda, I will call you Out of Order and direct you to limit your testimony to items listed on the agenda.

Oral testimony online will be limited to 5 minutes. A timer will be on the screen to count down the time and a chime will sound when you have 30 seconds left and the second chime when your testimony time expires. Your mic will automatically be muted once you have completed your oral testimony, or if your allotted time for testimony expires. I will now call on staff to call on the list of testifiers.

Senior Aide Crayn Akina: For the record, we wanted to let everybody know that Written testimony was received. Only two were outside of the 24-hour window and that was from Ka Lāhui Hawai'i Komike Kālai'āina testimony and Healani Sonoda-Pale and the other was from Germaine Meyers. There are other written testimony received inside of the 24-hour window from Lu Ann Faborito, Carl Kaupalolo, Malia Marquez, D Green, C Burghardt and Carol Lee Kamekona. The late written testimony will be distributed to all trustees following this meeting. The two written testimonies were already distributed that made the deadline.

We have 10 speakers today and we will call on each speaker in order of how they signed up, we just want to remind everybody to stick to the agenda to avoid any objections from Trustees, Board Counsel, or Administration.

Kamealoha Smith: Aloha, this is Kamealoha Smith from the island of Kaua'i. I was born Patrick Solomon Kamealoha Hanohano Pa Smith, I was raised on homestead land in Anahola and I'm a beneficiary advocate. Professionally I am a licensed teacher K through 12. I currently work for a nonprofit based at the muliwai in Hanalei, Hanalei River Heritage Foundation.

I also work with other community groups providing technical assistance to build capacity of both Native Hawaiian and Pacific Islander nonprofits here in East Kaua'i. Today I am here to provide testimony specific to the one agenda item. I'm here to provide support for the election of Trustee Hulu Lindsey as Chair and Lei Ahu Isa as Vice-Chair. I would also like to support some of other recommendations that came through social media and other platforms to support Kalei Akaka and Luana Alapa for a

leadership role on the BAE Committee and John Waihe'e, IV and Keli'i Akina for a leadership role on the Resource Management Committee.

As a beneficiary I am looking for leadership that will bring about opportunities to collaborate, raise the level of professionalism, help to improve interpersonal communications, transparency, accountability, create rules or enforce rules and policies that guide pono behavior and interactions and make clear the rules of engagement between Administration and Trustees. Over the past two years, and even before that, I have seen on video, a few trustees become unhinged, engaged in: yelling, bullying, prolonged rants. Also, using intimidation tactics to discourage beneficiaries from: applying for grants and program services, participating in meetings, and provide testimony at OHA Board Meetings.

I've also seen a few trustees rudely question other trustees and beneficiaries about their "*Hawaiianess*" and their loyalty to the Hawaiian people. We are, as Hawaiians, as Kanaka Maoli so much better than this, and we deserve leadership and leaders who are respectful, follow rules, want to make OHA better and want to improve the lives of beneficiaries. The newly elected Chair and Vice-Chair, along with the Committee Leaders, have a lot of work to do, especially when it comes to improving relations between Beneficiaries, Trustees and Administration. If the people that I put forth are the ones that are elected, I believe they deserve our support, and if elected, I would be one of those beneficiaries that would throw my support behind them 100%.

I also want to encourage Sylvia Hussey and her Administration to also throw their support behind the new leaders. I'm expecting a lot more from Sylvia Hussey and her team. I hope she works with her Senior Managers so that they can work with the Trustees and Beneficiaries fairly-objectively and within the rules and policies of the Office of Hawaiian Affairs. I think that the same sense of objectivity, being object in fairness should also be extended to beneficiaries. All beneficiaries, ALL BENEFICIARIES, should have the opportunity to benefit from OHA program services. So, when I talk about opportunity, at least we should all be given the same information so we can all be operating on the same page. Best wishes to the new OHA leadership, we pray every day for your health, your success and we all look forward to working with you to lift-up our lāhui during these trying times, Mahalo for giving me the opportunity to share my mana'o.

Germaine Meyers: Aloha trustees, Aloha Ka Pouhana, Legal Counsel, OHA Employees and my fellow beneficiaries. My name is Germaine Meyers, I'm an OHA Beneficiary for Beneficiary Advocacy and Empowerment. I'm also a Nānākuli Hawaiian Homestead lessee. Today I provide for you my data, views and arguments concerning today's agenda item.

I've already provided my written testimony with regards to today's agenda. However, I felt it was important that I provide oral testimony as well to emphasize the significance of today's meeting and agenda. As I expressed in my written testimony, I was concerned about Trustee Brendon Lee's message to us in last week's issue of Ka Wai Ola he titled *OHA's New Board*.

As I expressed, I disagree with Trustee Lee's personal opinions and interpretations. These are diminishing our elected Trustees; some of whom are mothers, fathers, teachers of Native Hawaiians, and Hawaiian children. In honor of our constitutional rights, in honor of each registered voter that cast a vote in support of each of you that now sits on OHA's Board of Trustees I extend my Aloha to all of you. Trustees, we cast our votes for each of you in hopes that you will use your God-blessed skills, experiences, and guidance to lead OHA from being an Office of Hidden Affairs into the Office of Hawaiian Affairs.

Transforming OHA into a beacon of light for Native Hawaiians, Hawaiians, and all citizens of Hawai'i, our Nation, and the World. Trustees, I'm looking at you and believe that each of you are capable of transforming OHA to be the endowment that we, the lāhui deserve.

I believe that you have a clean heart and will make sound decisions that changes the perceptions we have of our OHA trustees. That our trustees are trustworthy. Our trustees are Pono. Our trustees are honest. Our trustees are fair. Our trustees are God-fearing. Our trustees allow God to guide them. Our trustees are protectors, protectors of the trust, and of *OUR* trust.

It is for these reasons I humbly ask that you support the ratification of the pono leadership recommendations made by Trustee Lee in his Ka Wai Ola message. Most especially Trustee Hulu Lindsey for OHA Board Chair and Trustee Lei Ahu Isa for OHA Board Vice Chair. I believe these women along with many of you have the clean heart, skills, and experiences to transform OHA; The Office of Hawaiian Affairs into the endowment that we all deserve. Mahalo.

Healani Sonoda-Pale: Aloha Board of Trustees, this is Healani Sonoda-Pale. Ka Lāhui Hawai'i Komike Kālai'āina is the Ad Hoc Committee of the Nation of Hawai'i, which has been in existence since 1987. The Office of Hawaiian Affairs was established at the 1978 Constitutional Convention and was tasked to hold Title-to-Property and Assets-in-Trust for Native Hawaiians and Hawaiians. According to OHA's 2019 Annual Report - OHA holds Lands and Assets totaling 670 million dollars. Therefore, it is imperative that Ka Lāhui Hawai'i Komike Kālai'āina is the political action arm of the nation; weighing-in on the selection of the next chair of the OHA BOT.

The Chair would have the heavy responsibility of overseeing this trust and ensuring that it is used for the well-being and sole benefit of the Kanaka Maoli people. The first peoples of this land. On November 4th, 2020, our committee sought feedback from the Lāhui regarding who we would want to see as the Chair of the OHA BOT, and it came back overwhelmingly in favor of Trustee Hulu Lindsey. Ka Lāhui Hawai'i Komike Kālai'āina concurs with the results of this poll.

In addition, we recognize lāhui minded leadership qualities in the trustee from Maui.

The committee writes in strong support of Trustee Hulu Lindsey becoming Chair for the following reasons. She stood with our kupuna and kia'i to protect sacred Mauna Kea; even getting arrested on that fateful day, July 17, 2019. Till this very day, she continues to stand with our grassroots Aloha 'Āina, who are protecting our lands, burials, sacred places and traditional way of life. Trustee Hulu Lindsey supports Kanaka Maoli self-determination and consensus building. She voted no - to wasteful spending on Kana'ioluwalu, an initiative to manufacture consent for State determination and stood with the overwhelming, majority of the people who said a'ole to the Department of Interior rule.

Trustee Hulu Lindsey has nearly a decade of experience being an OHA Trustee and has an educational background in Real Estate and Business, skills that are valuable in overseeing a 670-million-dollar Trust.

Last, but not least, Trustee Hulu Lindsey conducts herself with grace and aloha that shows not just strength of character, but Hawaiian cultural depth and understanding. Ka Lāhui Hawai'i Komike Kālai'āina also writes in support of Trustee Leiana'ala Ahu Isa being appointed as Vice-Chair of the Board of Trustees.

She's one of the longest sitting trustees who has also shown lāhui minded leadership with her support of Aloha 'Āina and support for protecting Mauna Kea. In addition to my written testimony, I wanted to ask, *are we going to have an agenda item for Community Concerns today?* Because there are things going on that we I would like to testify on that are not on the agenda. Regarding what is happening on Maui and with also concern about the Kipuka website. It was down for a few days, so I just wanted to ask about that as well. Thank you.

Senior Trustee Waihe'e: Unfortunately, Community Concerns has not been listed on this agenda. So due to Sunshine Law we will not be able to have those opportunities available today, but we'll probably have it at the next meeting, or you could send us an email and we can do it that way.

Bronson Azama: Aloha Mai Kakou, 'O wau nō Kainoa. 'O Ko'olau ku'u mauna. 'O Keahiakahoe ku'u pu'u. 'O Kalimakele ku'u kahawai. 'O Kawahaokamanō ku'u kai. No He'eia Ko'olaupoko, O'ahu mai au. I would just like to speak to support Carmen Hulu Lindsey for the position of Chair of the Board of Trustees. We all know, and I normally do not like to reiterate information that has been presented, but our lāhui is in a real monumental time - and to select Trustee Lindsey, an individual many of us have seen at our side would be a great contribution to continuing our momentum as a people.

She has been an excellent example of leadership in choosing to stand at the side of our people, standing with our kupuna on the Mauna and much more. I'd also like to add that she is an inspiration and an example of leadership for 'ōpio like myself that we cannot get lost in our kulana but, stay true to the kuleana to protect and kia'i our 'āina. I would also like to stand in support of the testimony that was presented prior to me with the Ka Lāhui Hawai'i Komike Kālai'āina as I feel it truly encompassed what many of us in the lāhui feel would be an adequate choice for the Chair of the Board of Trustees. Mahalo nui.

Lu Ann Mahiki Lankford-Faborito: Aloha and Good Morning everyone. Hi, I am Lu Ann Mahiki Lankford-Faborito resident of 'āina pulapula Ho'olehua, Moloka'i. I am here to thank you Hulu for eight years served at OHA and bringing her knowledge and experience of land and real property issues to OHA. I am awed by her passion, empathy and sincere Aloha for matters involving our Native Hawaiian community and have witnessed her kia'i spirit at the mauna.

She has proved her desire to do what is pono on behalf of the OHA beneficiaries she represents. On a personal note, we have met at Hawaiian Civic Club conventions and I have learned alongside with her many of the resolutions and matters affecting our lāhui. Sitting at Hawai'i Theatre enjoying the Maui Divas and chatting allows me to see her personal Aloha and glad to allow her to win the silent auction at the Pa'i Foundations Wearable Arts. She has a beat on the Native Hawaiian Community and makes herself available to listen and share something I find very true in her 'ano. I believe she can be a strong foundation, has hard work, and the hard work will not be hampered. Thank you very much. Aloha everyone.

Sherry Cummings: Aloha I am Sherry Cummings from Anahola Kaua'i. Sorry, I am not in a proper place. The nonprofit that I represent is Mālama Anahola. I apologize but I just want to share my Aloha with all the trustees that were voted in. I do ask the indulgence of the trustees that they take into consideration some of us that are not up to par with others, but willing to do the great work.

To keep in mind that, we are, beneficiaries in multiple capacities; willing to do good work. We just want parity and I ask that and bless everybody, that has been voted in. Aloha.

IV. NEW BUSINESS

A. Organization of the Board of Trustees, Election of Officers, Committee Chairs and Vice Chairs**

Senior Trustee Waihe'e moves into **New Business**.

Trustee Lee pursuant to HRS §92-7(d) I move that we recess until Friday, December 18th, 2020 at 10:00 AM. to allow the Attorney General's Office to resolve with the Office of Elections Mr. Akina's certification and allow the entire board to have an opportunity to be nominated for the board leadership.

Chair Waihe'e: Ok there's a motion to recess, *is there a second?*

Trustee Ahuna seconds the motion.

Senior Trustee Waihe'e asks if there is any discussion. There is none.

Senior Trustee Waihe'e calls for a **ROLL CALL VOTE**.

							11:36 a.m.
TRUSTEE		1	2	'AE (YES)	A'OLE (NO)	KANALUA (ABSTAIN)	EXCUSED
LEINA'ALA	AHU ISA				X		
DAN	AHUNA		2	X			
KALEIHIKINA	AKAKA				X		
KELI'I	AKINA						
LUANA	ALAPA				X		
BRENDON KALEI'ĀINA	LEE	1		X			
CARMEN HULU	LINDSEY				X		
KEOLA	LINDSEY			X			
(SENIOR TRUSTEE) JOHN	WAIHE'E				X		
TOTAL VOTE COUNT				3	5	0	0

MOTION: [] UNANIMOUS [] PASSED [] DEFERRED [X] FAILED

Senior Trustee Waihe'e: Ok, the motion does not pass. With that, we will move on to the Organization of the Board of Trustees, Election of Officers, Committee Chairs and Vice Chairs. We will take nominations from the floor and once we have gotten all the nominations, then, I will have us vote for approval on each one, by voice.

Trustee Lee: Thank you Mr. Chair. **I nominate John Waihe'e, Trustee, At-Large, as Chair of the Office of Hawaiian Affairs.**

Senior Trustee Waihe'e: Thank you Trustee Lee. I respect your confidence, but I respectfully decline the nomination. I appreciate it. Thank you.

Trustee Akaka: With that said, **I would like to nominate Trustee Hulu Lindsey as Chair of the Board of Trustees of the Office of Hawaiian Affairs.**

Senior Trustee Waihe'e: OK, there's a nomination for Trustee Hulu Lindsey. *Are there any other nominations members?*

There are none.

Senior Trustee Waihe'e: If there are no other nominations, I can then get a motion to close the nominations.

Trustee Akaka moves to close the Nominations for Chairperson of the Board of Trustees.

Trustee Ahu Isa seconds the motion.

Senior Trustee Waihe'e asks if there is any discussion. There is none.

Senior Trustee Waihe'e calls for a **ROLL CALL VOTE.**

							11:38 a.m.
TRUSTEE		1	2	'AE (YES)	A'OLE (NO)	KANALUA (ABSTAIN)	EXCUSED
LEINA'ALA	AHU ISA		2	X			
DAN	AHUNA			X			
KALEIHIKINA	AKAKA	1		X			
KELI'I	AKINA						
LUANA	ALAPA			X			
BRENDON KALEI'ĀINA	LEE				X		
CARMEN HULU	LINDSEY			X			
KEOLA	LINDSEY			X			
(SENIOR TRUSTEE) JOHN	WAIHE'E			X			
TOTAL VOTE COUNT				7	1	0	0

MOTION: [] UNANIMOUS [X] PASSED [] DEFERRED [] FAILED

Senior Trustee Waihe'e: OK members, at this time we will take the vote on Trustee Hulu Lindsey's nomination as she's the only one there. She will be the first one that we vote on. Should she prevail in getting the chairmanship I will turn the meeting over to let her chair the remainder of this meeting.

Trustee Lee: Aloha Trustee Lindsey, we heard from, as well as got testimony from Ka Lāhui Hawai'i in support of your nomination for chair. I'd like to address a few of the points that they've made in their testimony. Their first point on July 17th on Mauna Kea. On July 17th there was a Permitted Interaction Group meeting on Oahu for the Permitted Interaction Group approved by the Board of Trustees for updating of the bylaws for the Office of Hawaiian Affairs. You as Trustee from Maui, had been appointed to that Permitted Interaction Group and had notified the Permitted Interaction Group days in advance that you were going to be unable to attend. So, I am curious as to how you are unable to attend your duties as a Trustee, but you were able to make a personal appearance up on Mauna Kea. To point three that they made - that you served nearly a decade and have experience at the Office of Hawaiian Affairs and a background that's valuable in overseeing a 670-million-dollar trust. As we as Trustees know, it's the Resource Management Committee that oversees the Native Hawaiian Trust and sits on the Investment Committee. You were the Chair of this Committee for two years, and yet nothing was done to address the Investment Policy that had the Native Hawaiian Trust underperforming the Standard and Poor's average.

Why were OHA's Land Holdings not incorporated to the Native Land Trust portfolio so that our assets would be properly allocated during your term as the Resource Management Chair?

Lastly Trustee Lindsey, you were the contract manager for the CLA audit, yet there were constant delays from requests from CLA under your leadership that later led to the delay of the completion of the audit. Given that as the BOT Chair, you will be the Chief Procurement Officer for the Office of Hawaiian Affairs. I'm concerned with the history that Ka Lāhui Hawai'i talks about. With regards to the Permitted Interaction Group that I mentioned earlier, this was the second Permitted Interaction Group that you were appointed to by the Chair of the Office of Hawaiian Affairs, yet you missed more than half of the meetings. In 2019 you missed a total of six BOT meetings, including the BOT Annual meeting on the Island of Lana'i. It is vitally important that the Chair of the Office of Hawaiian Affairs be present.

Senior Trustee Waihe'e: Thank you Trustee Lee. *Members is there any other discussion on the appointment?*

There is none.

Trustee Akaka moves to nominate Carmen Hulu Lindsey as the Chair of the Board of Trustees.

Trustee Ahu Isa seconds the motion.

Senior Trustee Waihe'e asks if there is any further discussion. There is none.

Senior Trustee Waihe'e calls for a **ROLL CALL VOTE**.

TRUSTEE		1	2	'AE (YES)	A'OLE (NO)	KANALUA (ABSTAIN)	11:43 a.m. EXCUSED
LEINA'ALA	AHU ISA		2	X			
DAN	AHUNA			X			
KALEIHIKINA	AKAKA	1		X			
KELI'I	AKINA						
LUANA	ALAPA			X			
BRENDON KALEI'ĀINA	LEE				X		
CARMEN HULU	LINDSEY			X			
KEOLA	LINDSEY			X			
(SENIOR TRUSTEE) JOHN	WAIHE'E			X			
TOTAL VOTE COUNT				7	1	0	0

MOTION: [] UNANIMOUS [X] PASSED [] DEFERRED [] FAILED

Senior Trustee Waihe'e: Congratulations Chair and I will now turn this meeting over to you.

Chair Lindsey: Mahalo Nui for your confidence, I really appreciate it and I'll serve you with the best of heart. Thank you, Trustee Waihee for your leadership as well. We'll move on now to the Vice Chair of the Board.

Trustee Alapa: I'd like to nominate for Vice Chair, Lei Ahu Isa.

Chair Lindsey: Lei Ahu Isa is being nominated, *are there are any other nominations?*

There are none.

Chair Lindsey: *Can I get a motion to close the nominations?*

Trustee Waihe'e moves to close the nominations for Vice-Chair.

Trustee Ahu Isa seconds the motion.

Chairperson Lindsey asks if there is any discussion. There is none.

Chairperson Lindsey calls for a **ROLL CALL VOTE**.

							11:45 a.m.
TRUSTEE		1	2	'AE (YES)	A'OLE (NO)	KANALUA (ABSTAIN)	EXCUSED
LEINA'ALA	AHU ISA		2	X			
DAN	AHUNA					1 – Kanalua; 2 – Kanalua = ABSTAIN	
KALEIHIKINA	AKAKA			X			
KELI'I	AKINA						
LUANA	ALAPA			X			
BRENDON KALEI'ĀINA	LEE				X		
KEOLA	LINDSEY			X			
JOHN	WAIHE'E	1		X			
CHAIR CARMEN HULU	LINDSEY			X			
TOTAL VOTE COUNT				6	1	1	0

MOTION: [] UNANIMOUS [X] PASSED [] DEFERRED [] FAILED

Trustee Lee: Trustee Ahu Isa you have been nominated for the Vice Chair of the Office of Hawaiian Affairs. In 2019 alone you missed 22 meetings, that is more than all other eight trustees combined.

As you were the Vice Chair of the Board of Trustee before, you have to understand the importance of that position. *Can we, as the Board of Trustees, expect you to have better attendance in the future as the Vice Chair of the Board?*

Trustee Ahu Isa: I can show you Trustee Lee that I had heart surgery from my cardiologist. I was in Queen's Hospital for five days and then I had to recuperate. So maybe those are the meetings you counted that I missed. I've been here about seven years now, that's what I wanted to explain. E kala mai, I'm sorry I missed it for health reasons. Mahalo Chair, I don't want to go into my private, personal things.

Trustee Alapa moves to nominate Leina'ala Ahu Isa as Vice-Chair.

Trustee Akaka seconds the motion.

Chairperson Lindsey asks if there is any further discussion. There is none.

Chairperson Lindsey calls for a **ROLL CALL VOTE**.

							11:47 a.m.
TRUSTEE		1	2	'AE (YES)	A'OLE (NO)	KANALUA (ABSTAIN)	EXCUSED
LEINA'ALA	AHU ISA			X			
DAN	AHUNA					1 – Kanalua; 2 – Kanalua = ABSTAIN	
KALEIHIKINA	AKAKA		2	X			
KELI'I	AKINA						
LUANA	ALAPA	1		X			
BRENDON KALEI'ĀINA	LEE				X		
KEOLA	LINDSEY			X			
JOHN	WAIHE'E			X			
CHAIR CARMEN HULU	LINDSEY			X			
TOTAL VOTE COUNT				6	1	1	0

MOTION: [] UNANIMOUS [X] PASSED [] DEFERRED [] FAILED

Chairperson Lindsey: We're going to move on to the Committees now and at this time I'd like to ask Trustee John Waihe'e, IV if he would be willing to accept the position of the Resource Management Committee Chairperson.

Trustee Waihe'e: I would Madam Chair.

Chairperson Lindsey: Thank you very much. *Is there any discussion?*

Trustee Lee: Trustee Waihe'e you've been a Trustee now for 20 years. According to the Board of Trustees Investment Policy 4.2(h), we as Trustees, are required to attend a minimum of two financial trainings a year. *Can you tell us Trustee Waihe'e over the 20 years - how many financial trainings have you attended?*

Trustee Waihe'e: Maybe 8 or 9.

Trustee Lee: Thank you.

Chairperson Lindsey: I'd like to ask for a ratification vote for the appointment of Trustee Waihe'e to the RM Committee.

							11:51 a.m.
TRUSTEE		1	2	'AE (YES)	A'OLE (NO)	KANALUA (ABSTAIN)	EXCUSED
LEINA'ALA	AHU ISA			X			
DAN	AHUNA			X			
KALEIHIKINA	AKAKA			X			
KELI'I	AKINA						
LUANA	ALAPA			X			
BRENDON KALEI'ĀINA	LEE				X		
KEOLA	LINDSEY			X			
JOHN	WAIHE'E			X			
CHAIR CARMEN HULU	LINDSEY			X			
TOTAL VOTE COUNT				7	1	0	0

MOTION: [] UNANIMOUS [X] PASSED [] DEFERRED [] FAILED

Chairperson Lindsey asks Trustee Alapa to serve as Vice Chairperson of the Resource Management Committee.

Trustee Alapa: Yes, I will.

Chairperson Lindsey calls for a **ROLL CALL VOTE**.

							11:54 a.m.
TRUSTEE		1	2	'AE (YES)	A'OLE (NO)	KANALUA (ABSTAIN)	EXCUSED
LEINA'ALA	AHU ISA			X			
DAN	AHUNA			X			
KALEIHIKINA	AKAKA			X			
KELI'I	AKINA						
LUANA	ALAPA			X			
BRENDON KALEI'ĀINA	LEE			X			
KEOLA	LINDSEY			X			
JOHN	WAIHE'E			X			
CHAIR CARMEN HULU	LINDSEY			X			
TOTAL VOTE COUNT				8	0	0	0

MOTION: [X] UNANIMOUS [] PASSED [] DEFERRED [] FAILED

Chairperson Lindsey: For the Beneficiary Advocacy and Empowerment Committee I'd like to appoint Kalei Akaka as its chair.

Trustee Lee: Trustee Akaka at the last Board of Trustees Meeting on October 29th you voted not to waive administration's recommendations for their LLCs from the Resource Management to be heard by the Board of Trustees. Your reasoning was that you wanted a chance to interview Administration's choices. All of administration's recommended members were present at the meeting and you could have asked them any question that you wished. The action taken by administration was previously approved by the Board of Trustees to address concerns in both the State Audit from 2018 and the CLA audit.

The Hawai'i State Legislature used Act 37 to put conditions on the Office of Hawaiian Affairs \$3,000,000 in general, funds subject to another State Audit and the State Auditor made it clear that he intended to audit the LLCs. The Beneficiary Advocacy and Empowerment Chair deals a lot with the State Legislature and knowing all the pieces of Office of Hawaiian Affairs funding. I have concerns with a Trustee who delayed addressing audit issues and the implications that it has for the Office of Hawaiian Affairs funding now and in the future. Funding that is supposed to go towards helping our beneficiaries.

Chairperson Lindsey: Thank you Trustee Lee.

Chairperson Lindsey calls for a **ROLL CALL VOTE**.

							11:55 a.m.
TRUSTEE		1	2	'AE (YES)	A'OLE (NO)	KANALUA (ABSTAIN)	EXCUSED
LEINA'ALA	AHU ISA			X			
DAN	AHUNA			X			
KALEIHIKINA	AKAKA			X			
KELI'I	AKINA						
LUANA	ALAPA			X			
BRENDON KALEI'ĀINA	LEE				X		
KEOLA	LINDSEY			X			
JOHN	WAIHE'E			X			
CHAIR CARMEN HULU	LINDSEY			X			
TOTAL VOTE COUNT				7	1	0	0

MOTION: [] UNANIMOUS [X] PASSED [] DEFERRED [] FAILED

Chairperson Lindsey asks Trustee Keola Lindsey to serve as Vice-Chair of the Beneficiary, Advocacy and Empowerment Committee.

Trustee Keola Lindsey agrees to serve as Vice-Chair.

Chairperson Lindsey asks if there is any discussion. There is none.

Chairperson Lindsey calls for a **ROLL CALL VOTE**.

							11:57 a.m.
TRUSTEE		1	2	'AE (YES)	A'OLE (NO)	KANALUA (ABSTAIN)	EXCUSED
LEINA'ALA	AHU ISA			X			
DAN	AHUNA			X			
KALEIHIKINA	AKAKA			X			
KELI'I	AKINA						
LUANA	ALAPA			X			
BRENDON KALEI'ĀINA	LEE			X			
KEOLA	LINDSEY			X			
JOHN	WAIHE'E			X			
CHAIR CARMEN HULU	LINDSEY			X			
TOTAL VOTE COUNT				8	0	0	0

MOTION: [X] UNANIMOUS [] PASSED [] DEFERRED [] FAILED

Chairperson Lindsey: Mahalo, this concludes the election portion of our meeting.

V. ANNOUNCEMENTS

Chairperson Lindsey: I just have a few comments to make and I beg your indulgence trustees.

I want to Mahalo you for your confidence in electing me as your chair. Unfortunately, we don't have more than six leadership positions, but we will definitely utilize those trustees that are not in leadership positions.

Today we celebrate the dawning of a new effort with the common goal to uplift the Office of Hawaiian Affairs. Our commitment is to build trust and cohesion amongst OHA's Board of Trustees so that we may address past disputes with the State and within our agency and communities so that we can begin to face the many challenges as Hawaiians with a strong and unified house.

In September of this year, the Office of Hawaiian Affairs adopted a new Strategic Plan that identifies the Agency's priorities and the framework for their implementation to the year 2035. This strategic initiative included a renewed focus on and commitment to Educational Pathways, Health Outcomes, Quality Housing and Economic Stability. It also expanded OHA's Focus to two new 'Endowment

Strategies' for the management of our peoples' financial and commercial resources and better stewardship of our land-based and natural resources.

As part of our plan to promote Economic Stability, our Board will be focusing on OHA land assets beginning with the development of our lands in Kaka'ako Makai. Our past Boards have developed different approaches to the Master Planning of Kaka'ako. This Board will have the opportunity to analyze and advance the development's financial feasibility and market analysis as the best steps forward in optimizing highest and best use of these prime lands.

Given our State's present economy, which has been adversely impacted by the unprecedented COVID-19 global pandemic, the development of our lands will need to be explored with strategic deliberation. In pursuing these goals, OHA is committed to two things: working with our community to preserve and perpetuate our language, culture, traditions, and identity and increasing community stewardship of Hawai'i's natural and cultural resources and the restoration of Native Hawaiian cultural sites, landscapes, kulāiwi and traditional food systems.

We will work hard to protect our iwi kupuna, whether at Kumukahi, Kahoma, Makena, the Kahului Sand Dunes and even Kawaiha'o. Today, we are facing many difficult issues. When the OHA Health priorities were identified, no one knew we would be dealing with COVID in the coming year. As this challenge increases, OHA is committed to working with our communities, especially those on neighbor islands, to provide support to Hawaiians in need of food and medical support.

We are capable - of addressing today's realities, but will need the support of our people, our communities on neighbor islands and the State, Legislature, County & Federal Governments.

Better stewardship and protection of our Hawaiian land resources is now a primary goal of OHA. Fulfilling our fiduciary responsibilities requires that OHA Trustees protect traditional and customary rights, increase stewardship of trust lands and continue to defend our lands and waters such as Na Wai 'Eha and the Hanalei River Valley, rivers and ocean resources for future generations. OHA will need to continue in supporting our beneficiaries in all areas of stewardship. The Protect Mauna A Wakea advocacy is a prime example for OHA to shepherd a process to build consensus in the stewardship management & land uses of our sacred ceded land resources; such as Mauna Kea. This is the meaning of *auamo kuleana* for the 'Āina & our people.

Yes, disagreements will arise, they always do, especially where passion and high emotions is the impetus for core and critical issues. But, if we are committed to working with others to resolve these challenges without delay, blame and costly litigation - we will persevere.

As stated by our own Queen, Lili'uokalani, "Never cease to act for fear you may fail." Today we mark the dawning of a new era at OHA, our tasks are great, but our capacity, as a people and 'Ohana, is greater still. Mahalo Ke Akua for calling us to this task. We pray for strength and Aloha so that we will persevere together. We wish our staff, our fellow beneficiaries, all Hawai'i, and my fellow trustees a very, very Merry Christmas. Mele Kalikimaka. Hau'oli makahiki hou. Mahalo again and Aloha.

VI. ADJOURNMENT

Trustee Ahuna moves to adjourn the BOT meeting.

Trustee Akaka seconds the motion.

Chairperson Lindsey asks if there is any discussion. There is none.

Chairperson Lindsey calls for a **ROLL CALL VOTE**.

							12:04 p.m.
TRUSTEE		1	2	'AE (YES)	A'OLE (NO)	KANALUA (ABSTAIN)	EXCUSED
LEINA'ALA	AHU ISA			X			
DAN	AHUNA	1		X			
KALEIHIKINA	AKAKA		2	X			
KELI'I	AKINA						
LUANA	ALAPA			X			
BRENDON KALEI'ĀINA	LEE				X		
KEOLA	LINDSEY			X			
JOHN	WAIHE'E			X			
CHAIR CARMEN HULU	LINDSEY			X			
TOTAL VOTE COUNT				7	1	0	0

MOTION: [] UNANIMOUS [X] PASSED [] DEFERRED [] FAILED

Chairperson Carmen Hulu Lindsey adjourns the BOT meeting at 12:04 p.m.

Respectfully submitted,

Melissa Wennihan
Trustee Aide
Senior Trustee John Waihee, IV

As approved by the Board of Trustees on January 14, 2021.

Carmen Hulu Lindsey
Chairperson, Board of Trustees