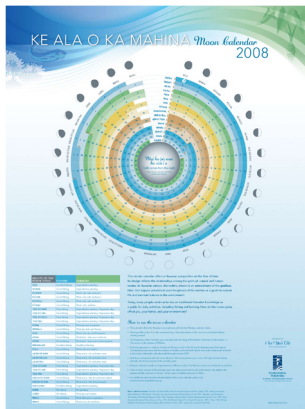


Available Now

Educational products to amplify Hawaiian perspectives

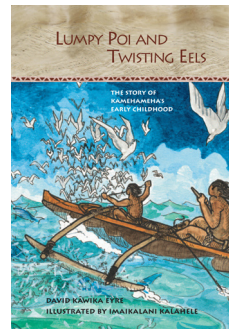


Ke Ala O Ka Mahina Moon Calendar 2008 ***(poster)***

Developed by Hui Maui Ola and produced by Kamehameha Publishing, this traditional lunar calendar offers a Hawaiian perspective on the flow of time and reflects the relationships among the spiritual, natural and human realms.

Lumpy Poi and Twisting Eels

by David Kāwika Eyre, illustrated by Imaikalani Kalahele
Book 2 in the Kana'iaupuni Series, a work of historical fiction about Kamehameha, the great hero of Hawai'i. The series highlights the people, places, and events that shaped Kamehameha's life and led him to become the Conqueror of the Islands. The stories are based on Hawaiian sources and are intended for students, families, and educators.



**KAMEHAMEHA
PUBLISHING**

A division of Kamehameha Schools
567 S. King Street, Suite 118
Honolulu, Hawaii 96813

Available on the Web at www.kamehamehapublishing.org